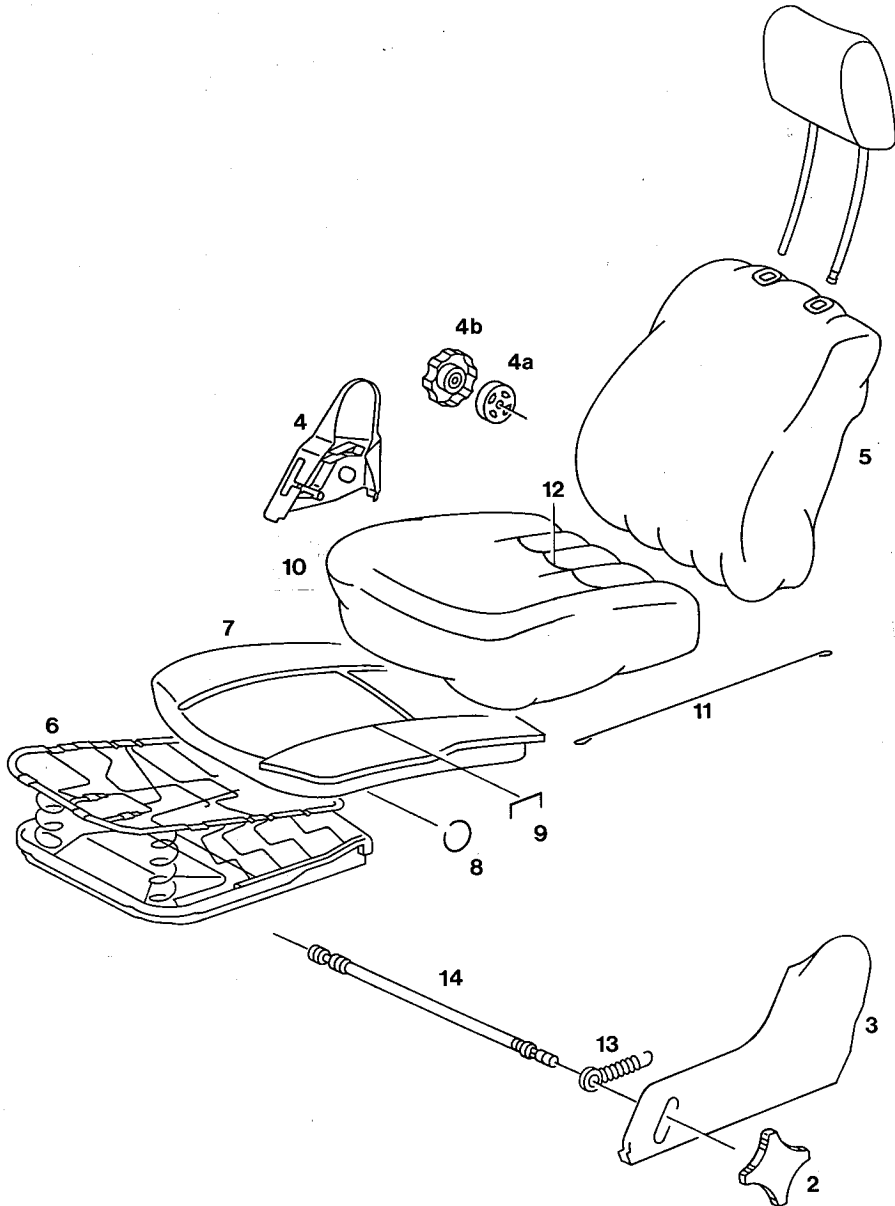


91-180 Removal and installation of driver's seat cushion cover

Driver's or front passenger seat removed
(91-100 or 91-110))



1912 - 13406/2

Handwheel (2) of tilt adjusting shaft (14)	pull off
Trim (3) and (4) of backrest fitting	force off
Handwheel (4b)	force off uniformly by means of 2 plastic wedges
Cover (4a)	Unbend lock and remove. Handwheel (4b) and cover (4a) must be renewed following disassembly

Backrest (5)	unscrew from cushion frame
Spring (13)	disengage (2 each)
Shaft (14) for tilt adjustment	remove
Cushion frame (6) with cover (10)	place on suitable base and press against each other
Seat cushion cover (10)	pull out all-around on plug-in channel
Round wire clips (8)	separate with pliers and pull out (during installation, sew-on nettle cloth or glue on)
Rubber hair mat (7)	remove from cushion frame (6)
Stapling clip (9)	unbend at bottom of rubber hair mat and remove seat cover (10) from rubber hair mat
Wire clip (11) and stapling strip (12)	locate with stapling clip (9) during installation. For installation proceed vice versa.

Removal

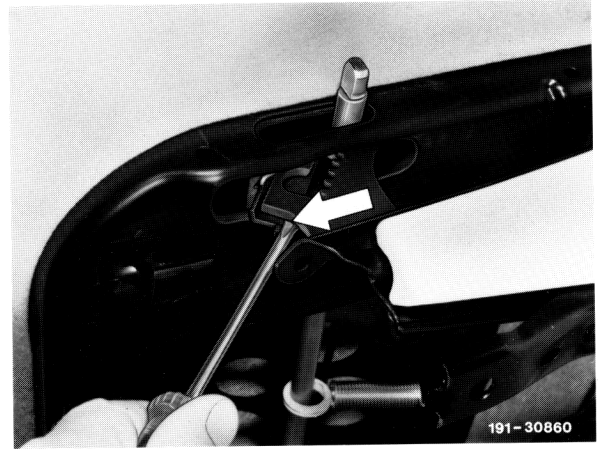
- 1 Remove driver's or front passenger seat (91-100 or 91-110).
- 2 Remove head restraint.
- 3 Pull off handwheel for tilt adjustment. Force off trim with plastic wedge.
- 4 Pull off handwheel for backrest adjustment. Unbend lock of plastic cover, remove cover. Force off trim by means of plastic wedge.

Installation note

Handwheel and plastic cover for head restraint or backrest adjustment must be renewed upon removal.

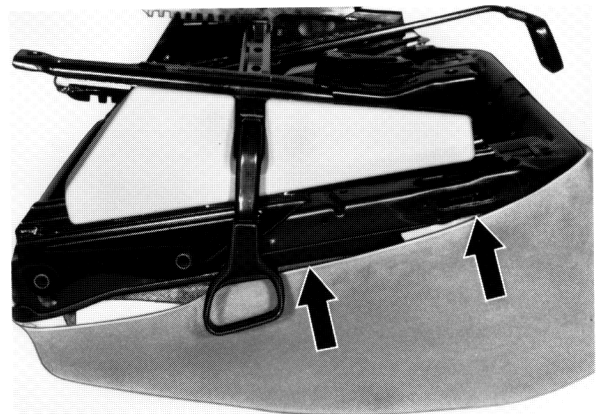
- 5 Unscrew backrest from seat cushion frame.

6 Remove tilt adjustment:
Disconnect spring.
Turn shaft in upward direction.
Disengage locking bracket at right and left.
Turn shaft downward and pull out laterally.



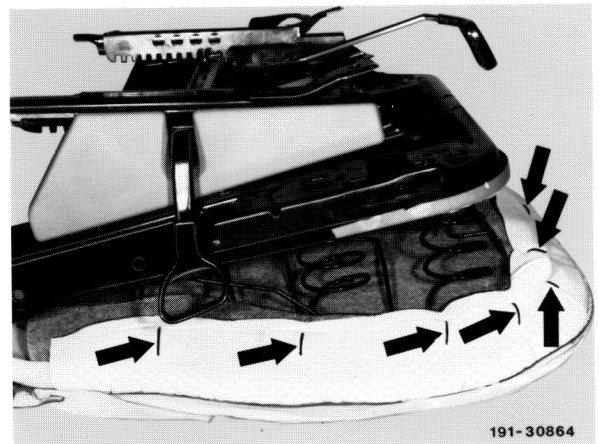
7 Place seat cushion with covering in downward direction on suitable support.

8 Compress spring box and pull out covering from plug-in channel all-around.

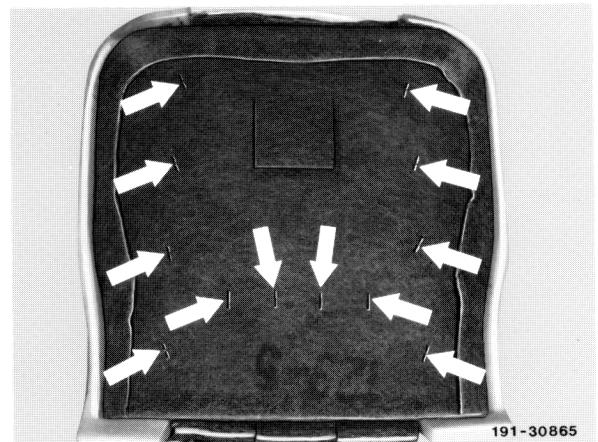


9 Pull round wire clips from rubber hair mat.

10 Remove spring box from rubber hair mat.



11 Unbend stapling clips on bottom of rubber hair mat and remove cover.

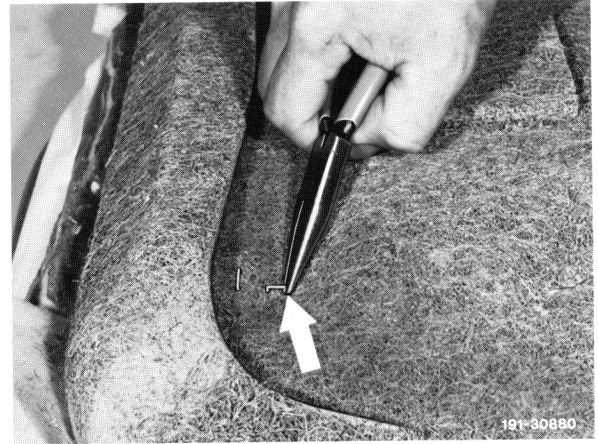


Installation

12 Place covering on rubber hair mat and align. Push new stitching clips through rubber hair mat and bend with pliers.

Note: In this connection, locate the laterally pulled in wire clips and the transverse stitching ribbon at the rear by means of the stitching clips.

13 Place spring box into rubber hair mat.



14 Fasten nettle cloth with upholstery yarn (instead of round wire clips) to rubber hair mat.

15 Compress spring box and engage covering on plug-in channel.

16 Introduce shaft for tilt adjustment in such a manner that the mount for the handwheel is facing toward outer side of seat. Simultaneously, introduce the two restoring springs.

17 For further installation proceed vice versa.

