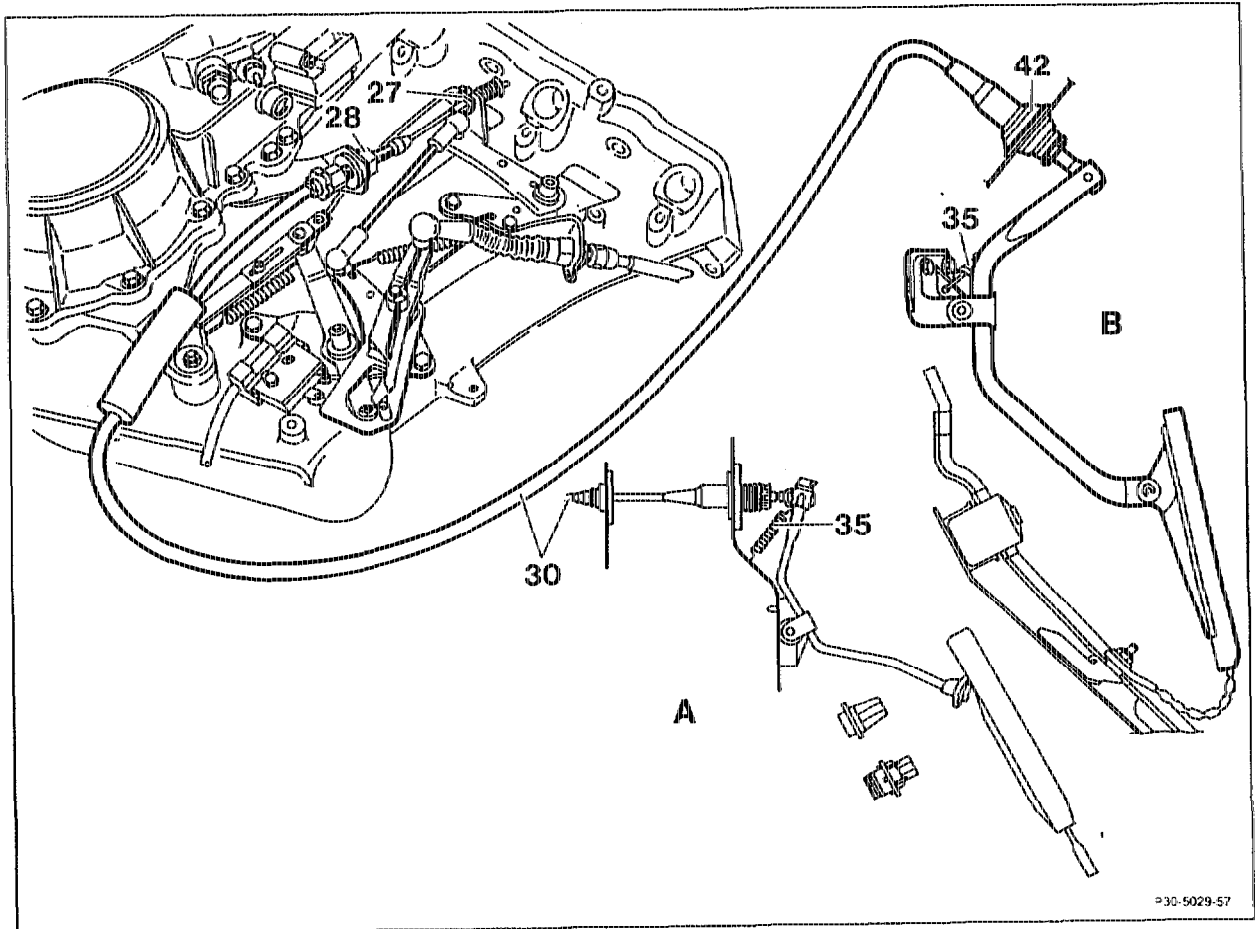


## 30-0025 Removing and installing Bowden cable

Operation No. of operation texts and work units or standard texts  
and flat rates:  
30-0025



- A. Model 124  
B. Model 129

Bowden cable (30)	.....	detach at throttle control lever, attach. Press guide piece (27) out of throttle control lever for this purpose, press in.
Plastic clip (28)	.....	compress and remove from holder together with Bowden cable (30), insert.
Cover below instrument panel	.....	remove, install.
Return spring (35) in car interior	.....	detach, attach (acts as safety element).
Bowden cable (30)	.....	press out from inside car, insert. Do not press out rubber grommet (42).

Bowden cable (30) ..... remove complete working from engine compartment, install.



if vehicle fitted with cruise control, check position of hose clip for oil-to-water heat exchanger. The throttle control linkage must have sufficient clearance.

Rubber grommet (42) ..... check, replace if necessary.

Throttle control ..... check, replace if necessary (see 30-1010).

