

**Note**

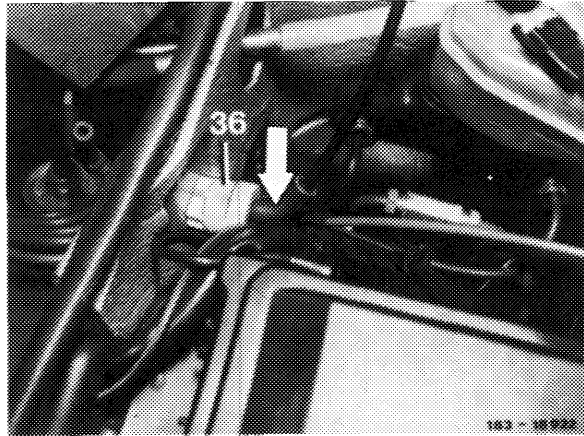
---

Except model 126.120.

**a) Testing check valve**

---

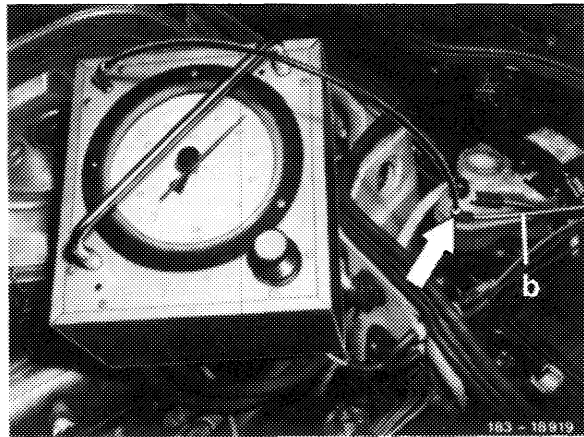
- 1 Pull vacuum line color code red-green from check valve (36).
- 2 Connect vacuum line of tester (refer to arrow), evacuate and read pressure gauge.
- 3 If gauge shows a pressure increase, replace check valve (36).



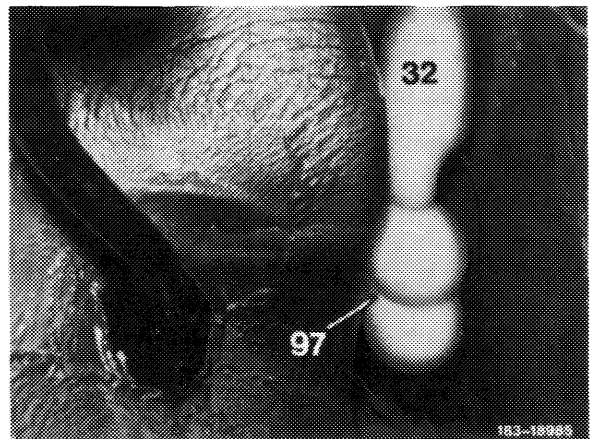
**b) Testing vacuum reservoir**

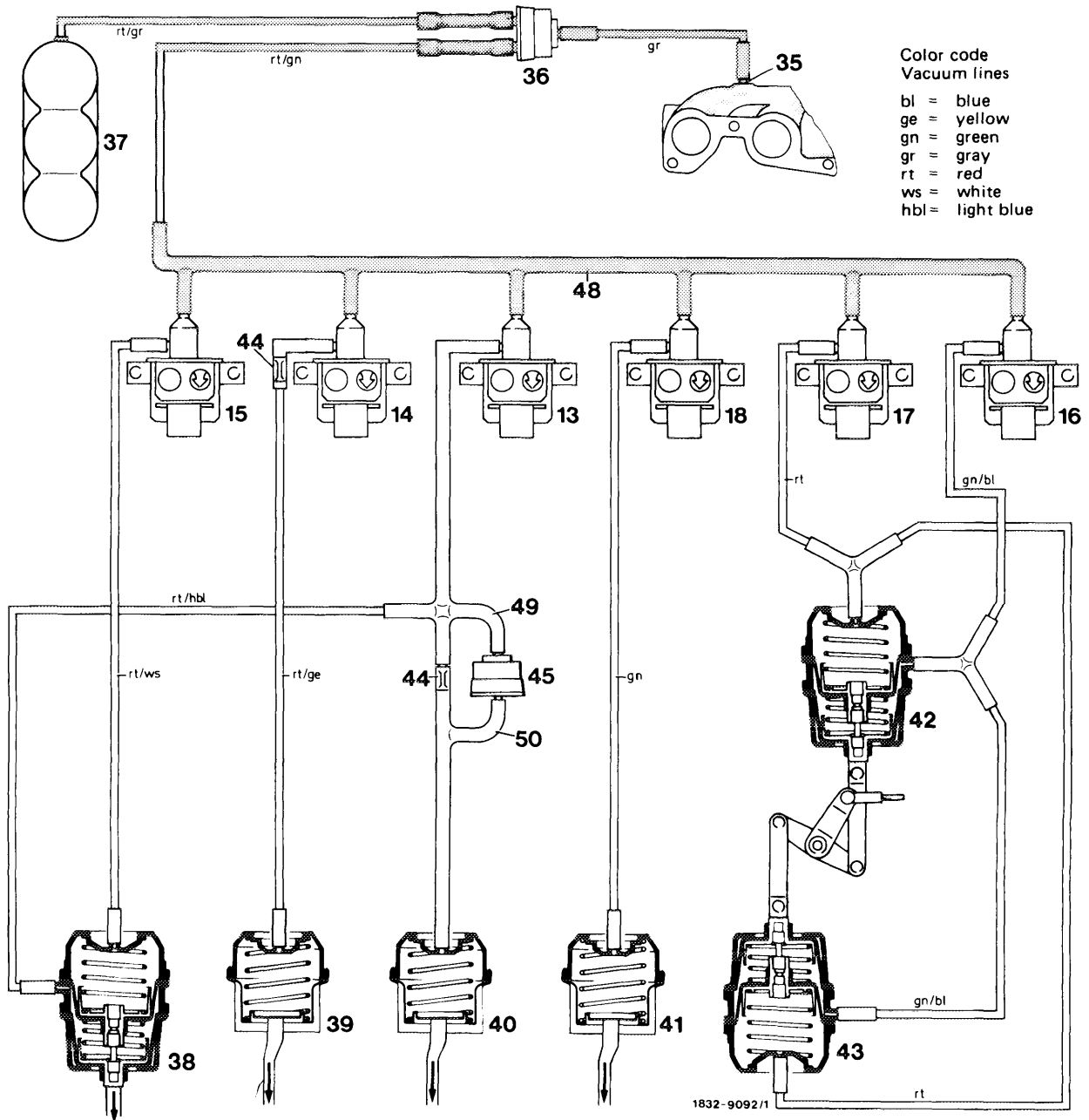
---

- 4 Pull vacuum line (b) color code red/gray out of connection.



- 5 Connect vacuum line of tester (refer to arrow) to vacuum line (b) and evacuate.
- 6 If readout on gauge changes, replace gasket of vacuum reservoir (97) or replace vacuum reservoir.





Vacuum function diagram automatic climate control, function selection "a" (defrosting)

- |   |   |
|---|---|
| 13 Switchover valve for center nozzle flap  | 40 Vacuum element for center nozzle flap (flap "closed")  |
| 14 Switchover valve for leg room flaps  | 41 Vacuum element for scoop air flap (flap "closed")  |
| 15 Switchover valve for defroster nozzle flaps  | 42 Vacuum element for fresh air-recirculated air flap and main air flap (flap "open", 100 % fresh air supply) |
| 16 Switchover valve for vacuum elements of fresh air-recirculated air flap and main air flap (small stroke) | 43 Vacuum element for fresh air-recirculated air flap and main air flap (flap "open", 100 % fresh air supply) |
| 17 Switchover valve for vacuum elements of fresh air-recirculated air flap main air flap (large stroke)     | 44 Orifice  |
| 18 Switchover valve for scoop air flap  | 45 Check valve  |
| 35 Vacuum connection on intake pipe   | 48 7-point distributor  |
| 36 Check valve  | 49 4-point distributor  |
| 37 Vacuum reservoir   | 50 3-point distributor  |
| 38 Vacuum element for defroster nozzle flaps (flaps "open")   |   |
| 39 Vacuum element for leg room flaps (flaps "closed")   |   |