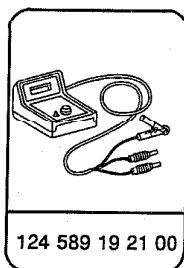
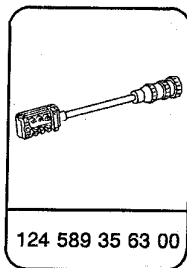
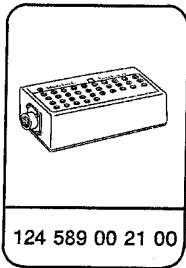


91-632 R and R seat belt and ETR (from 09/87 onwards)

Special tools



Note

Some noise from the inertia reel mechanism is unavoidable when the belt is retracted. In a case of complaint, an unreasonable degree of noise can only be remedied by replacing the safety belt. **Under no circumstances must oil or grease be used for the rectification of this noise.**

Equally, the inertia reel unit must not be **disassembled**, since accidents may be caused by the spring under tension. Inertia reel units which have been opened are no longer recognized as subject to warranty.

Commercially available test instruments

Multimeter

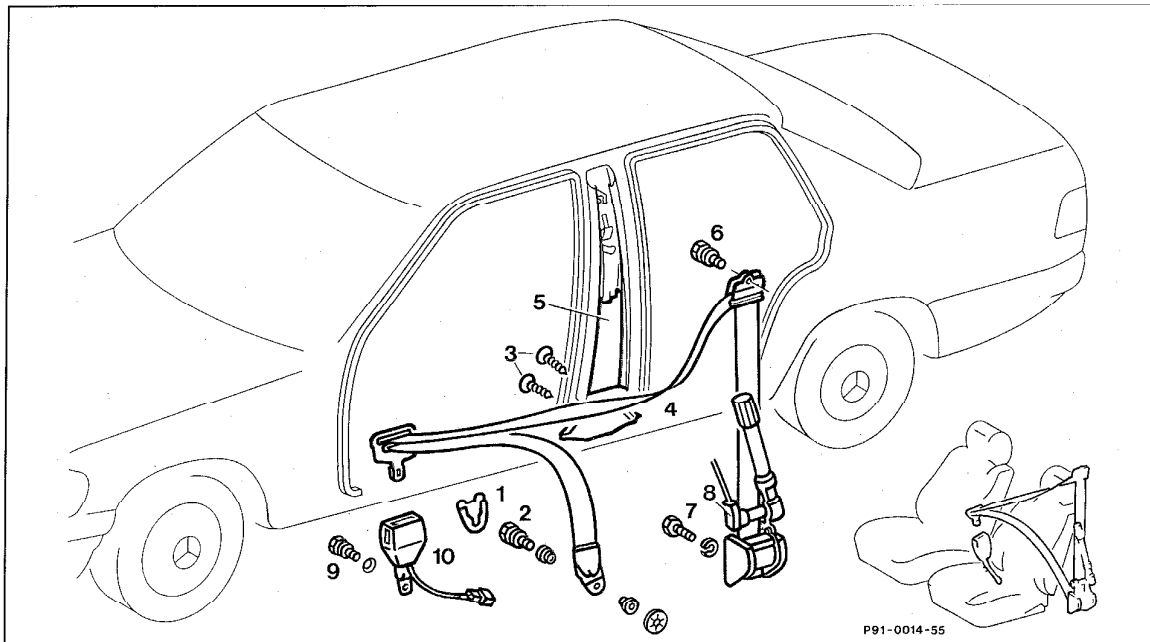
e.g. Sun, DMM-5 or
Avometer 2003

Testing

After completing operations on the airbag/ETR restraint system, the ETR squib resistance must be checked and the system tested with an impulse display. The test procedure is described in job number (91-710).

A. Saloon

Driver's or front passenger's seat removed (91-100/110) for removal of belt lock (10).



P91-0014-55

P91-0014-55

Removal

Ignition key	Turn to position 0.
Negative battery terminal	Disconnect and insulate.
If airbag fitted: red 10-pin plug in front passenger's footwell	Disconnect.
Trim cap (1)	Press out.
Screw (2)	Remove (35 Nm).
Sill trims	Release.
Screws (3) in trim (4)	Remove.
Trim (4)	Remove.
Cladding panel (5) on central pillar	Remove downwards.
Safety belt with latching tongue opening in cladding	Pull through

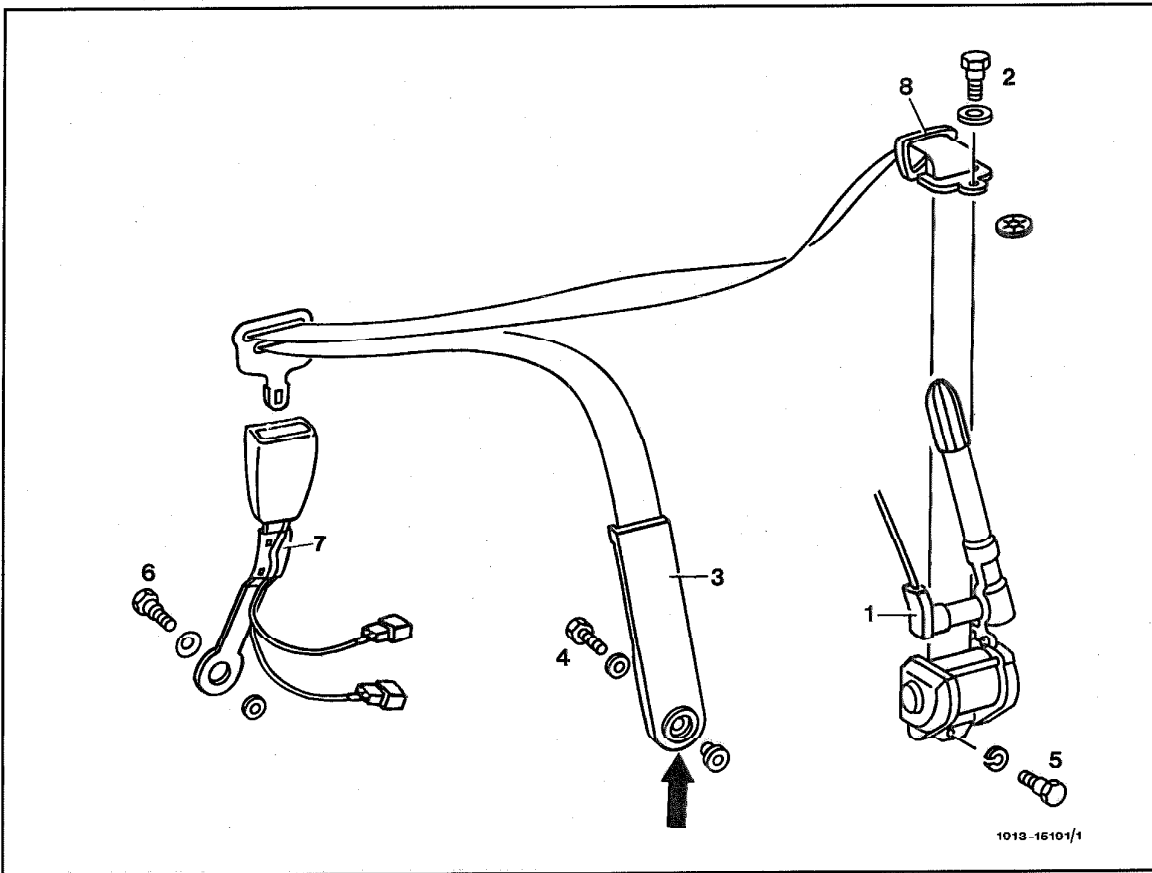
91-632 R and R seat belt and ETR (from 09/87 onwards)

Screw (6) in belt guide fitting	Remove (35 Nm).
Screw (7) in inertia reel	Remove (35 Nm).
ETR squib plug-connector (8)	Disconnect.
ETR	Remove from central pillar.
Trim on passive anchorage fitting	Pull back and to the side, and remove.
Screw (9) in belt lock	Remove.
Cable ties under seat cushion	Release.
Belt lock, with lead	Remove.
	Install in reverse order.

B. Coupe

Rear body trim removed (68-456).

Driver's or passenger's seat removed (91-100/119) for removal of belt lock (7).



1913-15191/1

Removal

- | | |
|---|--------------------------|
| Ignition key | Turn to position 0. |
| Negative battery terminal | Disconnect and insulate. |
| If airbag fitted: red 10-pin plug in front passenger's footwell | Disconnect. |
| ETR squib plug-connector (1) | Disconnect. |
| Screw (2) in belt guide fitting | Remove (35 Nm). |
| Belt guide fitting (8) | Remove. |

91-632 R and R seat belt and ETR (from 09/87 onwards)

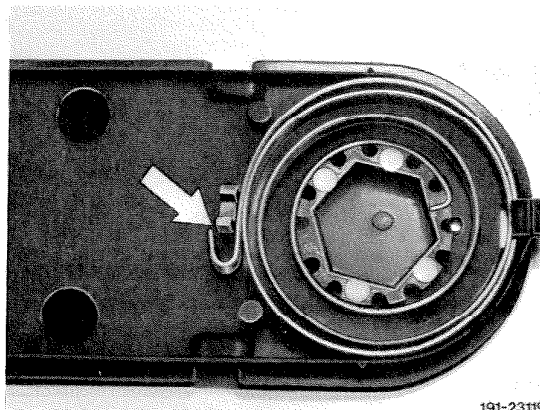
Trim (3) on pivot fitting	Open with plastic wedge (arrow). Observe installation directions.
Screw (4) in side rail	Remove (35 Nm).
Screw (5) in inertia reel	Remove (35 Nm).
ETR	Remove. Observe installation directions.
Trim on passive anchorage fitting	Pull back and to the side, and remove.
Screw (6) in belt lock	Remove.
Cable ties under seat cushion	Release.
Belt lock, with lead (7)	Remove.
	Install in reverse order.

Installation directions

When installing ETRs, pay attention to alternative configurations (left and right) and take care to ensure correct seating in locking device.

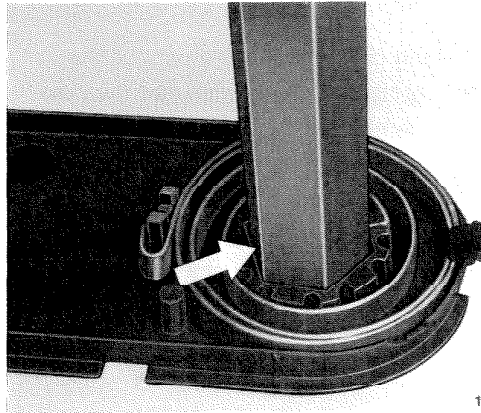
1 When installing a new ETR, release the trim on the pivot fitting with a plastic wedge. Install screw in side rail (35 Nm), resecure trim on pivot fitting and remove safety device from locking spring on pivot fitting.

2 When reinstalling a removed ETR, place spiral spring with plastic insert in upper section of pivot fitting and engage spring in retainer.



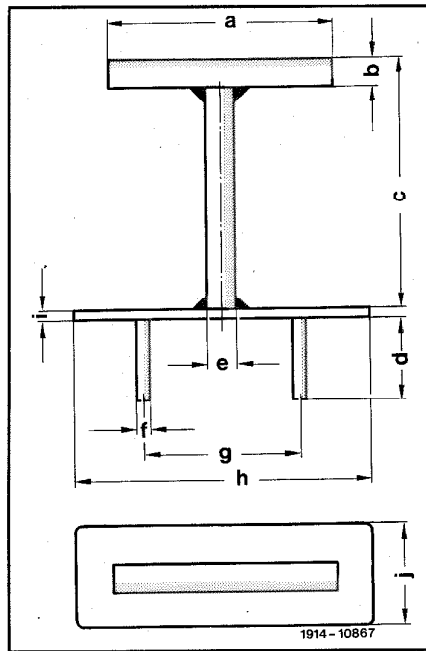
191-23119
191-23119

3 Insert allen key in plastic insert and tension spring through 180 degrees.



191-23118
191-23118

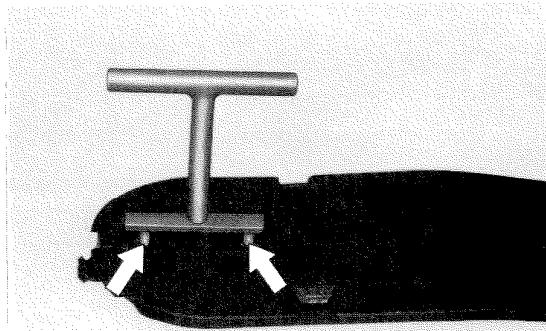
4 Prepare special tool (if not available).



- a 45 mm
- b 4 mm Ø
- c 35 mm
- d 8 mm
- e 4 mm Ø
- f 2 mm Ø
- g 24 mm
- h 40 mm
- i 1.5 mm
- j 8 mm

1914-10867

5 From back of upper part of pivot fitting, lock plastic insert after tensioning with special tool.



191-23125
191-23125

91-632 R and R seat belt and ETR (from 09/87 onwards)

Note

The pivot fitting on the side rail must pull the unfastened safety belt downwards into the rear corner under spring pressure, so that no hanging loop develops.

After installation, a check must be made to ensure that the belt is fully retracted.

For this check, pull the belt diagonally downwards, then manually return it, holding the fastening tongue, to the belt guide fitting.