

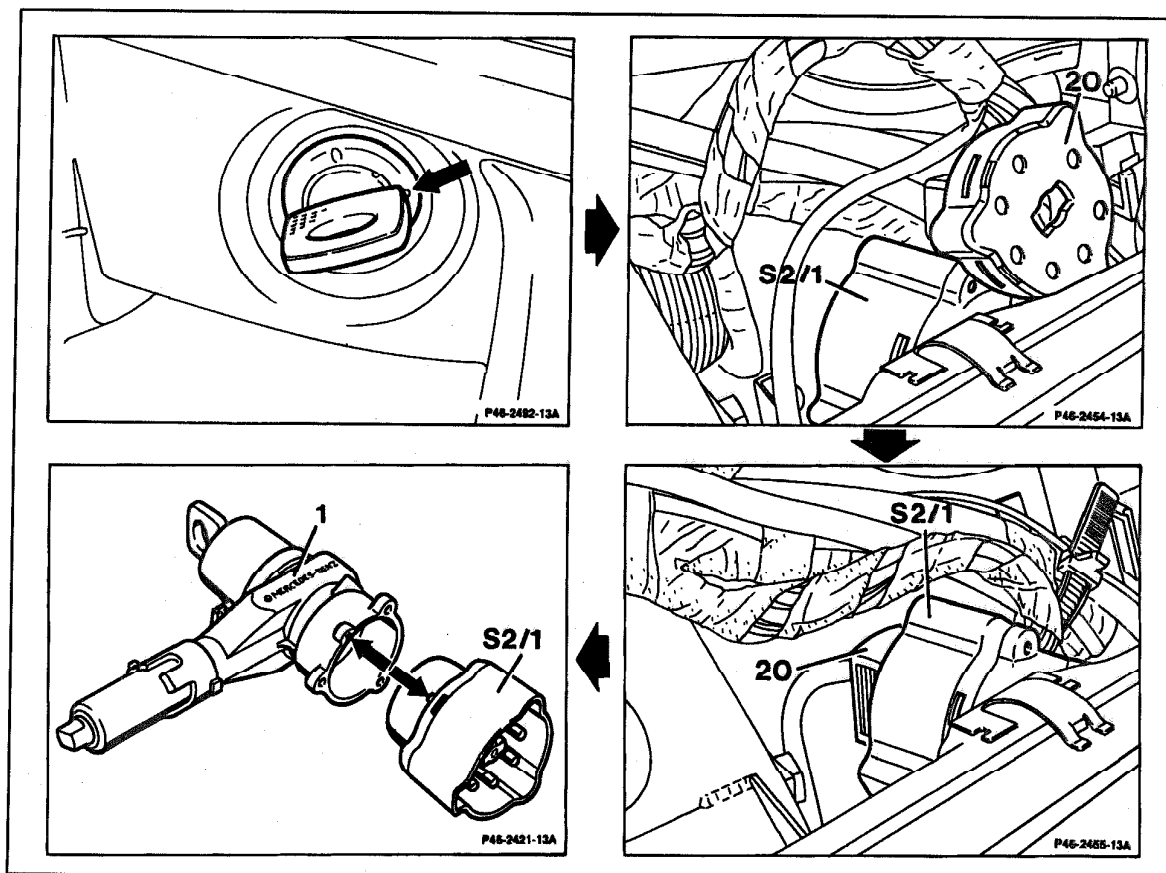
## 46-640 R and R steering wheel lock

### Preliminary work:

Steering wheel removed (46-610).  
Instrument cluster removed (54-250).

- A. Removal and installation of ignition/starter switch
- B. Removal and installation of lock cylinder (up to 08/89)
- C. Removal and installation of lock cylinder (as of 09/89)
- D. Removal and installation of complete steering wheel lock
- E. Removal and installation of parking position key-lock

### A. Removal and installation of ignition/starter switch



P46-5067-57

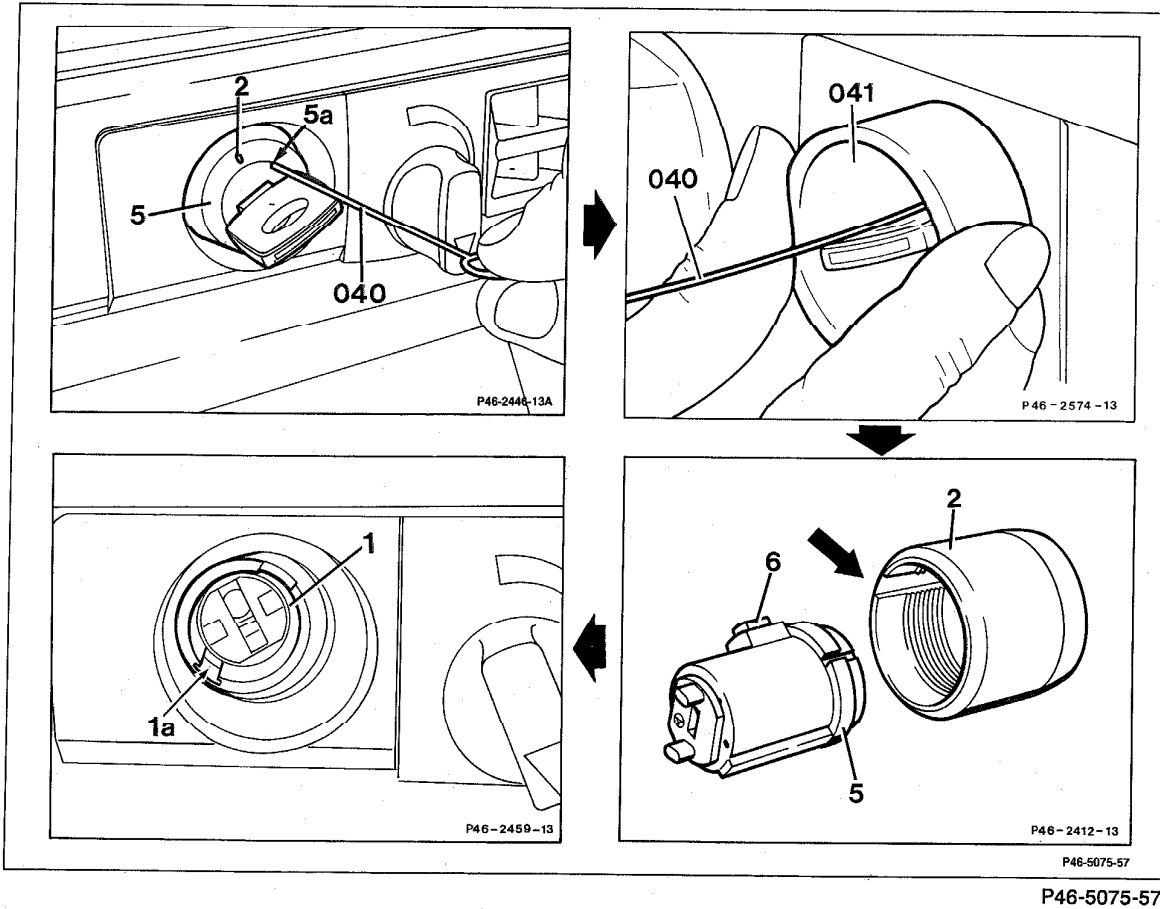
## 46-640 R and R steering wheel lock

---

Ignition key .....	turn to position "1" (arrow).
Plug connector (20) .....	disconnect on ignition/starter switch (S2/1), reconnect.
Mechanical part of steering wheel lock (1) .....	remove, install (46-640, part D).
Ignition/starter switch (S2/1) .....	screw out of steering wheel lock (1), screw in, pull out, insert. Insert ignition/starter switch (S2/1) so that locating lug (arrow) engages in recess in steering wheel lock (1).
Ignition/starter switch (S2/1) .....	check for proper function.

# 46-640 R and R steering wheel lock

## B. Removal and installation of lock cylinder (up to 08/89)



Lock cylinder (5) .....

Cover (2) .....

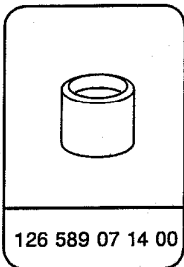
turn to position "1". Press release wire (040) into hole (5a) to stop until retaining catch is released.

screw off with sleeve (041) 126 589 07 14 00, screw on, remove from steering wheel lock together with lock cylinder (5). Pull release wire (040) out of lock cylinder (5) and turn ignition key to position "0", remove. When installing position steering wheel lock (1) so that high spot on lock cylinder (5) engages in groove (1a) in steering wheel lock (1).

## 46-640 R and R steering wheel lock

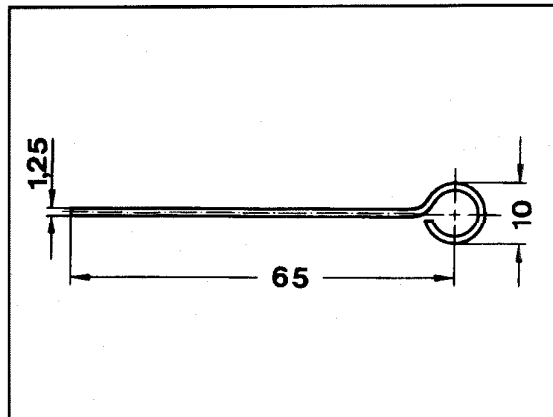
- Lock cylinder (5) ..... remove, when installing insert into cover (2) so that safety catch (6) engages in groove in cover (2). Insert ignition key and turn to position "1", push release wire (040) into hole (5a) and release retaining catch.
- Lock cylinder (5) ..... check for proper function.

### Special tool



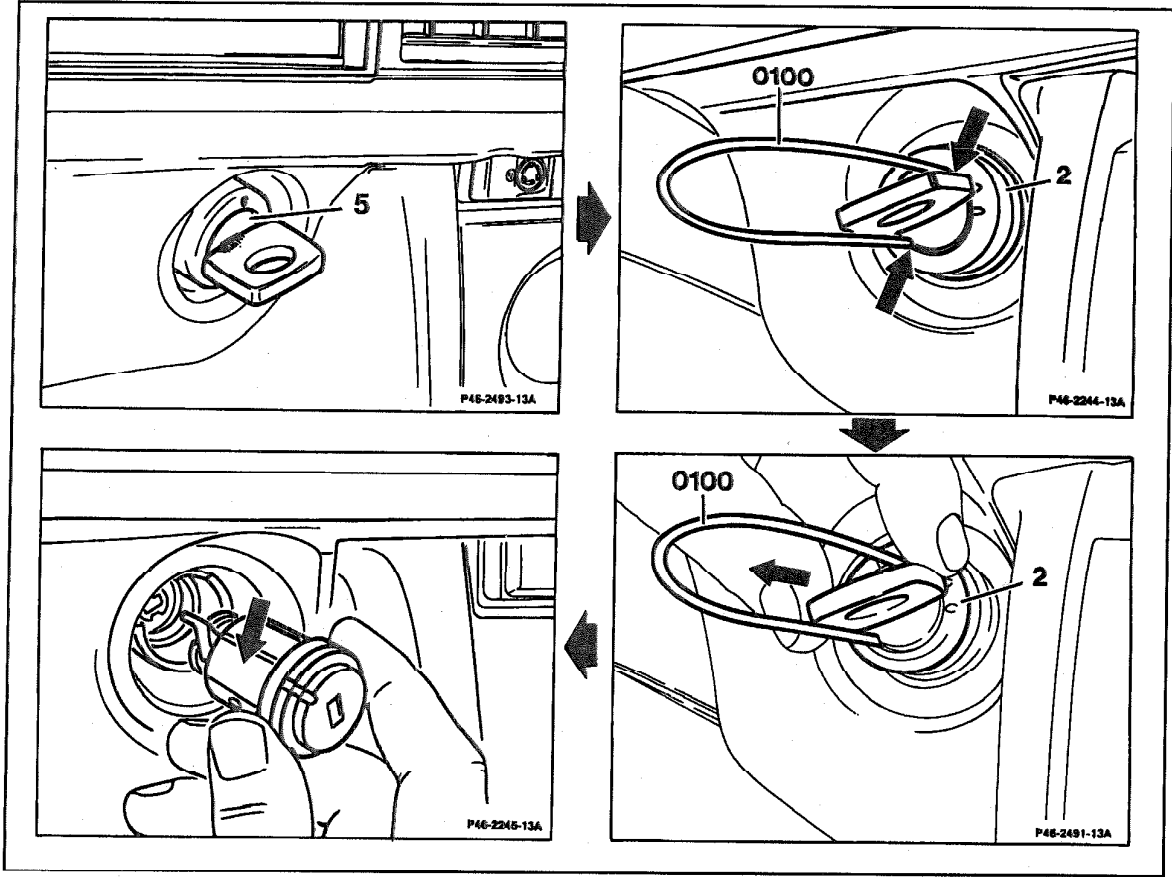
### Shop-made tool

Release wire



P46-0074-13

C. Removal and Installation of lock cylinder (as of 09/89)



P46-5066-57

- Lock cylinder (5) .....
- Release wire (0100) .....
- Lock cylinder (5) .....

turn to position "1".  
 press into holes (arrows) and release safety catches by overcoming resistance of spring.  
 remove from steering wheel lock together with cover (2). Pull release wire (0100) out of lock cylinder (5), turn ignition key to position "0" and remove.

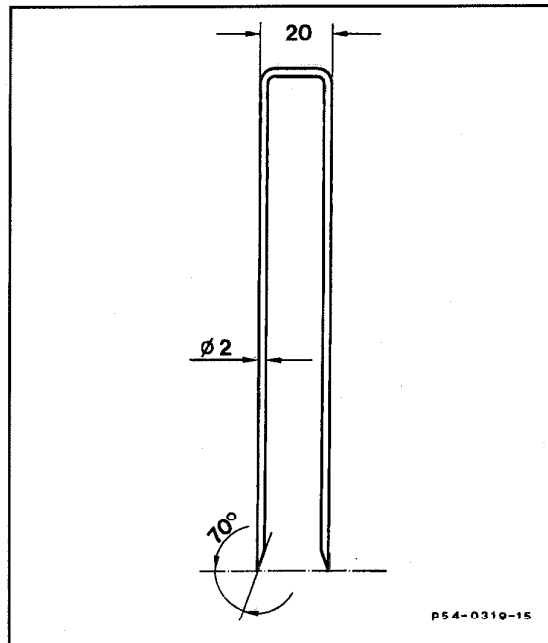
## 46-640 R and R steering wheel lock

- Lock cylinder (5) ..... remove from cover (2). When installing in steering wheel lock turn lock cylinder to position "1", the high spot on the lock cylinder (arrow) must engage in the groove in the steering wheel lock.
- Cover (2) ..... slide on so that recess points to left and ignition key is positioned on center mark on cover. Press lock cylinder (5) and cover (2) into steering wheel lock so that cover (2) catches.
- Lock cylinder (5) ..... check for proper function.

### Shop-made tool

Release wire

Extended length of wire = 320 mm



P54-0319-15

## 46-640 R and R steering wheel lock

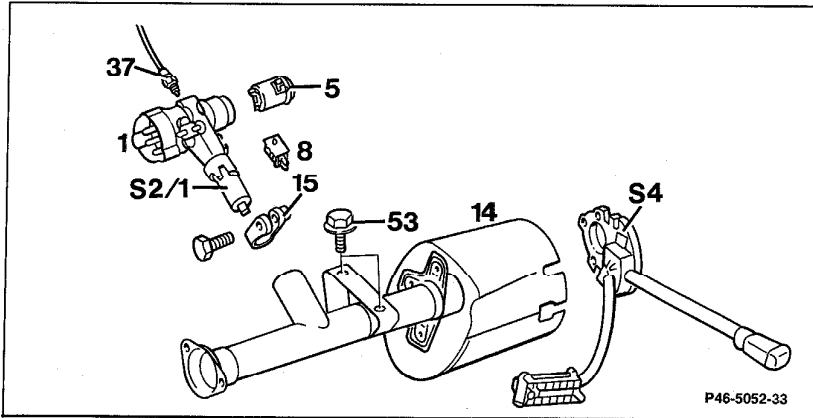
### D. Removal and installation of complete steering wheel lock

Preliminary work:

Steering wheel removed (46-610).

Instrument cluster removed (54-250).

Cover below instrument panel removed (68-150).



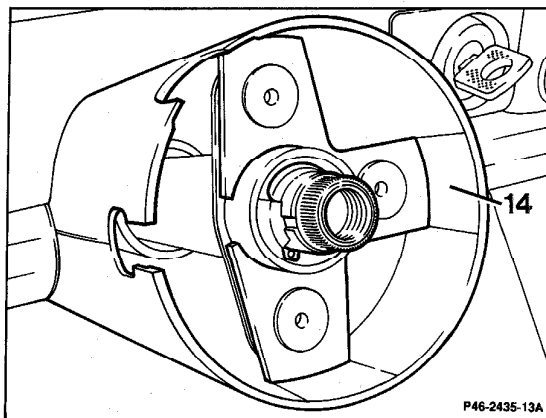
P46-5052-33

Combination switch (S4) .....	remove, install (54-310) (step 1).
Cover (14) .....	remove, install (step 2).
Lock cylinder (5) .....	turn to position "1" (step 3).
Ignition/starter switch (S2/1) .....	disconnect plug connector, reconnect (step 4).
Control cable (37) .....	screw off on vehicles with parking position key-lock, screw on (step 5).
Lock cylinder (5) .....	remove, install (section B or C) (step 6).
Hex. head bolts (53) .....	loosen, tighten (step 7).
Mounting clamp (15) .....	loosen, tighten (step 8).
Contact switch (8) .....	disconnect plug connector, reconnect (step 8).
Steering wheel lock (1) .....	press arresting pin in, pull steering wheel lock (1) out of jacket tube, turn and remove. When installing assure that arresting pin engages in hole in mount (step 9).
Steering wheel lock (1) .....	install lock cylinder (5), remove and remove contact switch (8), install (step 10).

**Removal, installation**

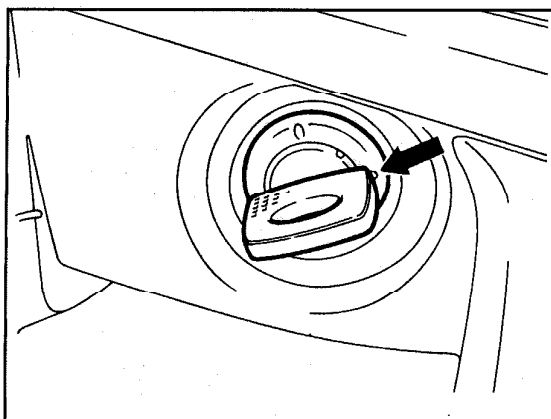
1 Remove combination switch (54-310).

2 Remove cover (14) on jacket tube.



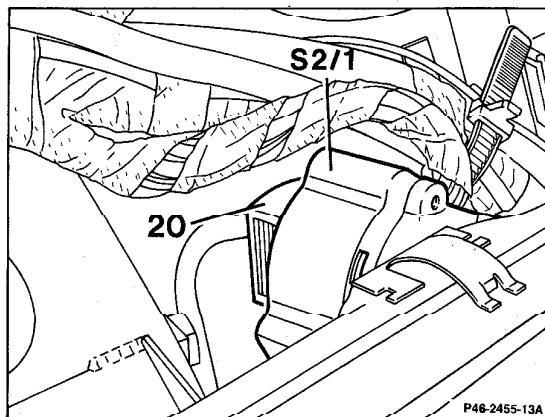
P46-2435-13A

3 Turn lock cylinder to position "1" (arrow).



P46-2492-13A

4 Disconnect plug connector (20) on ignition/starter switch (S2/1).

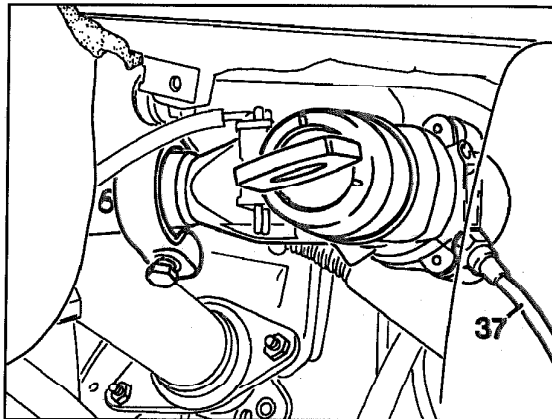


P46-2455-13A

## 46-640 R and R steering wheel lock

5 On vehicles with parking position key-lock screw control cable (37) off of steering wheel lock.

6 Remove lock cylinder (section B or C).



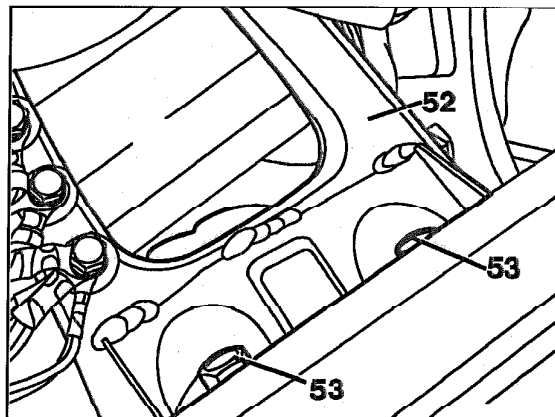
P46-5057-13

### ⚠ CAUTION!

The bottom steering spindle (corrugated tube) is extremely sensitive to lateral forces; for this reason move jacket tube out of position carefully and as little as possible.

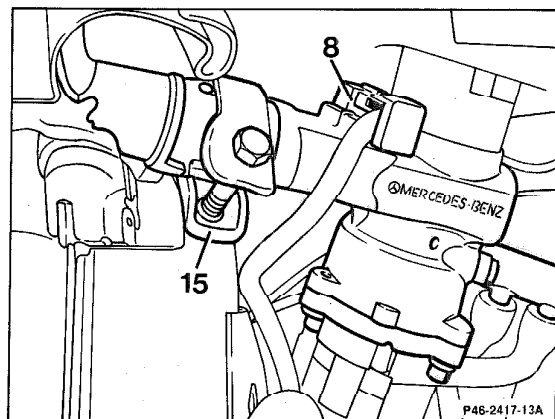
7 Loosen hex. head bolts (53) on upper mount (52) for jacket tube.

Pull jacket tube downward slightly to remove and install steering wheel lock.



P46-2441-13A

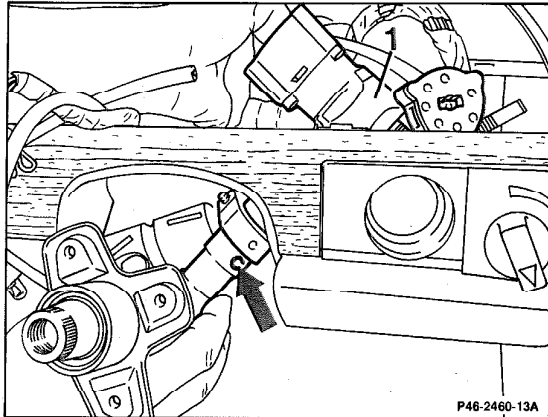
8 Loosen mounting clamp (15). Disconnect plug connector on contact switch (8).



P46-2417-13A

## 46-640 R and R steering wheel lock

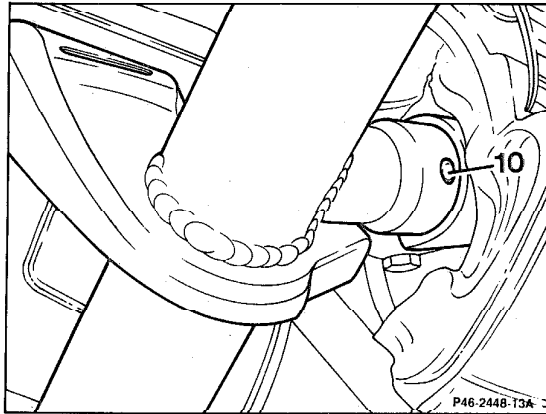
9 Press arresting pin (arrow) in. Pull steering wheel lock (1) slightly out of mount in jacket tube, turn and remove completely from mount in jacket tube.



P46-2460-13A

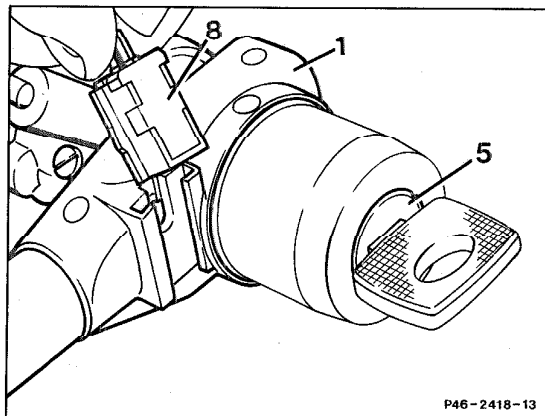
### Installation note

Insert steering wheel lock into mount in jacket tube. Turn lock until arresting pin (10) engages in hole in mount.



P46-2448-13A

10 Insert lock cylinder (5), turn to position "1" and remove contact switch (8) from steering wheel lock (1).



P46-2418-13

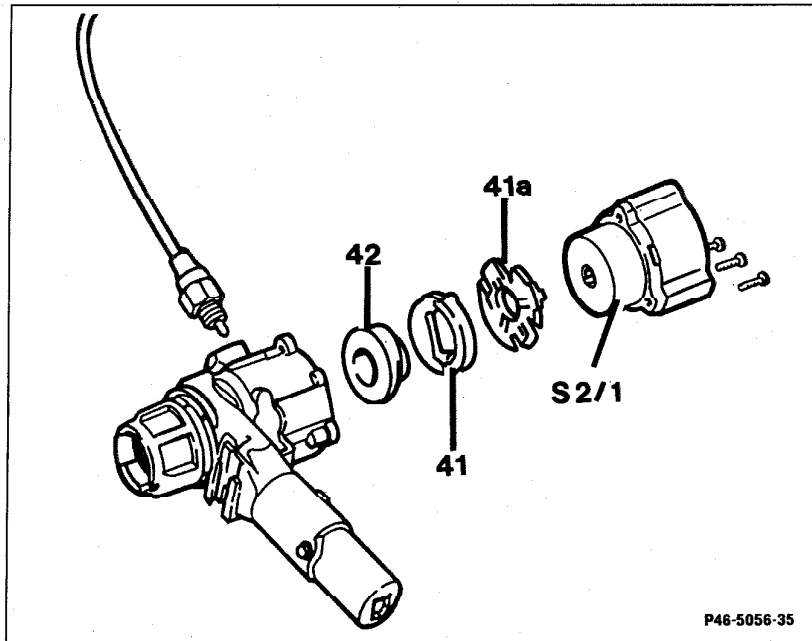
## 46-640 R and R steering wheel lock

### E. Removal and installation of parking position key-lock

Preliminary work:

Lock cylinder removed (46-640, section B or C).

Steering wheel lock removed (46-640, section D).



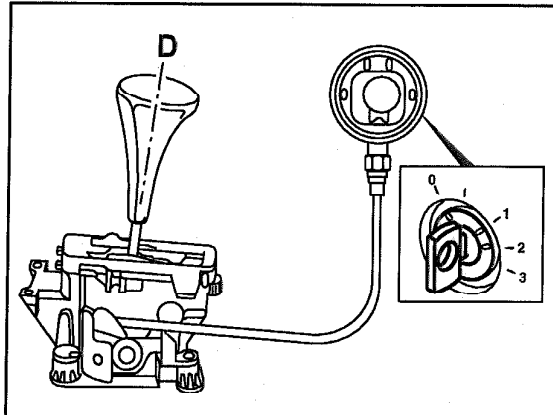
P46-5056-35

P46-5056-35

Ignition/starter switch (S2/1) .....	screw out slotted screw, screw in.
Ignition/starter switch (S2/1) .....	remove, install, observe locating lug.
Snap ring (41a), parking position key-lock (41) and coupling (42) .....	remove, install.

**Note on parking position key-lock**

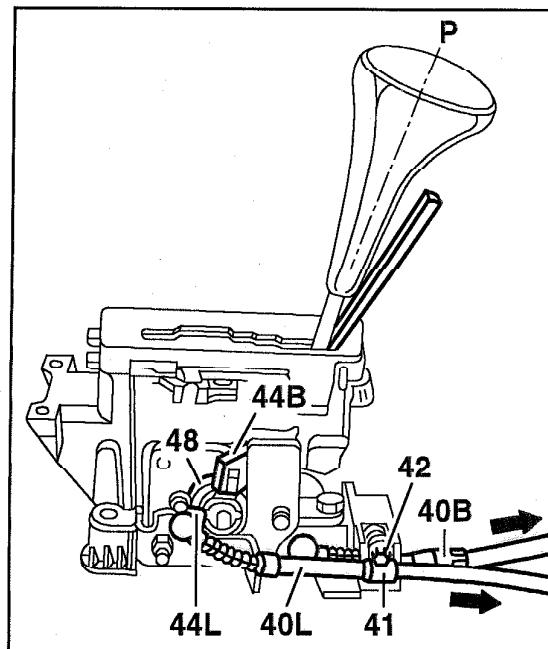
Since 01/90 (USA as of model year 90) all vehicles with automatic transmission have been equipped with a parking position key-lock. This assures that the ignition key cannot be removed unless the selector lever is in position "P". When the steering wheel lock and lock cylinder installed the parking position key-lock must be pushed back through the hole for the control cable in order to remove the ignition key.



P27-2406-13

**Adjusting shift lock cable**

Place selector lever in P and ignition key in position 0.  
 Secure selector lever with plastic wedge (see illustration).  
 Snap in ball end of cable (40L) and insert into bracket. Then pull cable housing in the direction of the arrow until the pawl (44B) contact the cam (48). Pull cable sleeve in the direction of the arrow until the pawl (44L) contacts the cam (48). Torque mounting screws to 5 Nm.



P27-0060-15

## 46-640 R and R steering wheel lock

---

### Checking after adjustment

- With the ignition key in position 1 and the brake pedal depressed more than 25 mm: The pawls (44B) and (44L) must disengage from the cam (48) fully, so that the selector lever can be moved into N without any resistance. The shift interlock is released.
- With the brake pedal in the released position: Move selector lever from N to P, and turn ignition key to position 0. Pawls (44B) and (44L) must engage in the cam (48). The shift interlock is engaged. Install protective caps.

#### **Note:**

If the adjustment needs to be repeated, care must be taken that the Bowden cable moves easily in the cable sleeve.