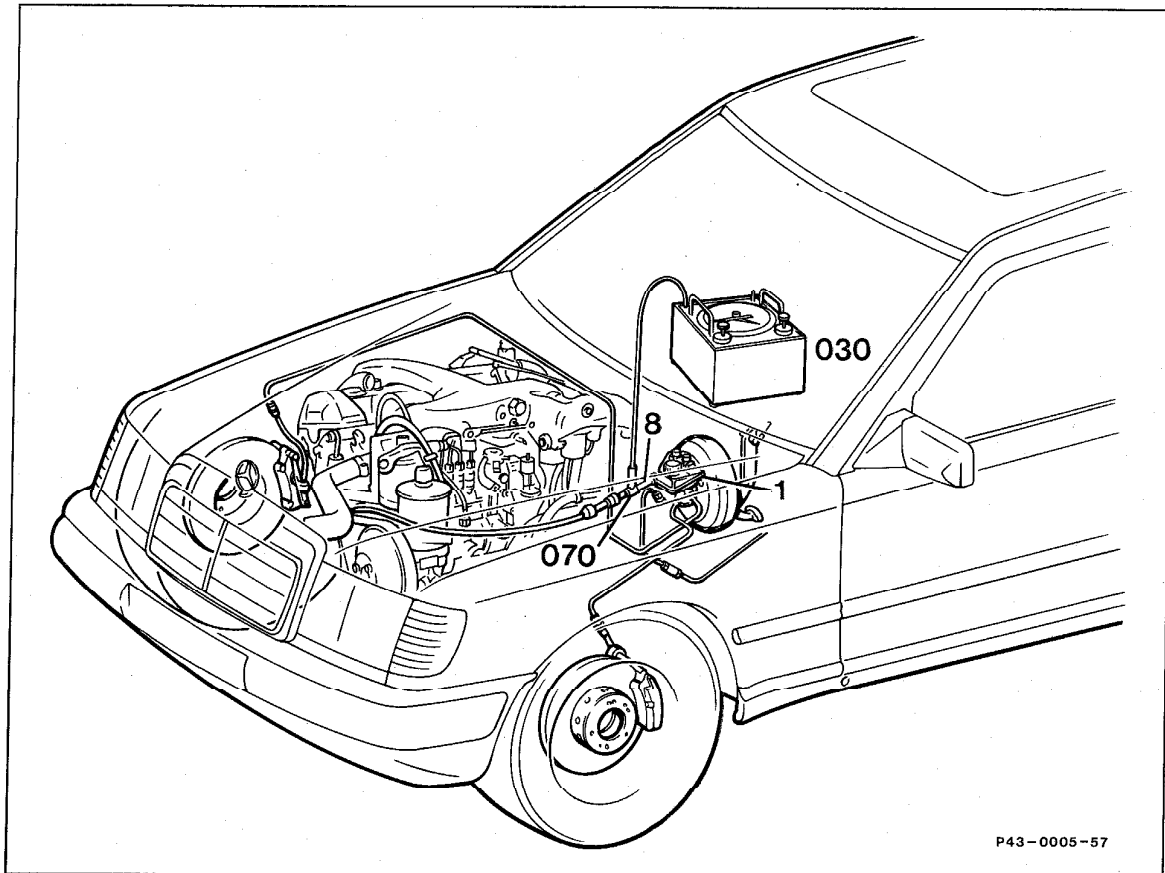


43-0660 Checking piston vacuum pump



P43-0005-57

P43-0005-57

Vacuum line (8)	screw off at brake booster (1), screw on, 30 Nm.
Test fitting (070)	attach between brake booster and line. (Self-made test fitting).
Tester (030) 201 589 13 21 00	attach to test fitting.
Engine	allow to run at 600 rpm and measure time required to build up a vacuum of 0.5 bar (see Data).

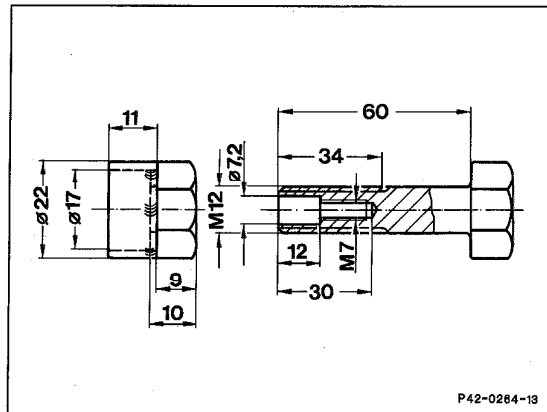
Note

If the specified values are not achieved or the vacuum decrease is greater than 0.2 bar within 30 s, check vacuum system for leakage. If defect cannot be found, recondition or replace vacuum pump.

43-0660 Checking piston vacuum pump

Self-made tool

Clamping tool (51).



P42-0264-13

Note

The repair kit, part no. 000 586 18 23 is required for replacing the swing arm.

Data

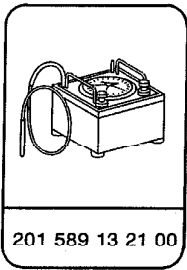
Note

Measure evacuation time required to achieve vacuum of 0.5 bar in seconds at engine speed of 600 rpm. The following values apply:

Brake booster and vacuum pump	Brake booster and comfort circuit	Brake booster vented (comfort circuit in order and drawn off)
9" double diaphragm brake booster and piston vacuum pump	13-14	9-11
8"/9" double diaphragm brake booster and double-acting piston vacuum pump	5	

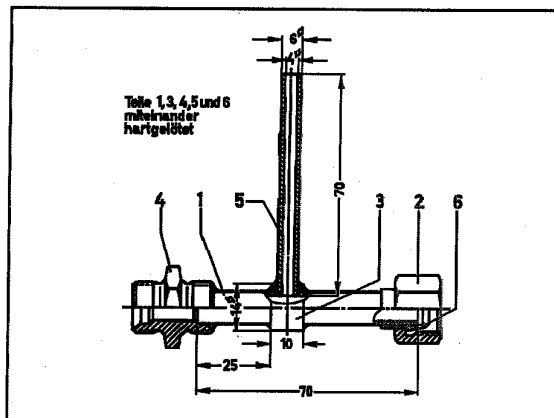
A decrease in pressure of 0.2 bar within 30 seconds is permissible with engine shut off.

Spooial tool



Self-made tool

Fabricate test fitting according to drawing
(parts 1, 3, 4, 5 and 6 are brazed together).



P100-0032-13