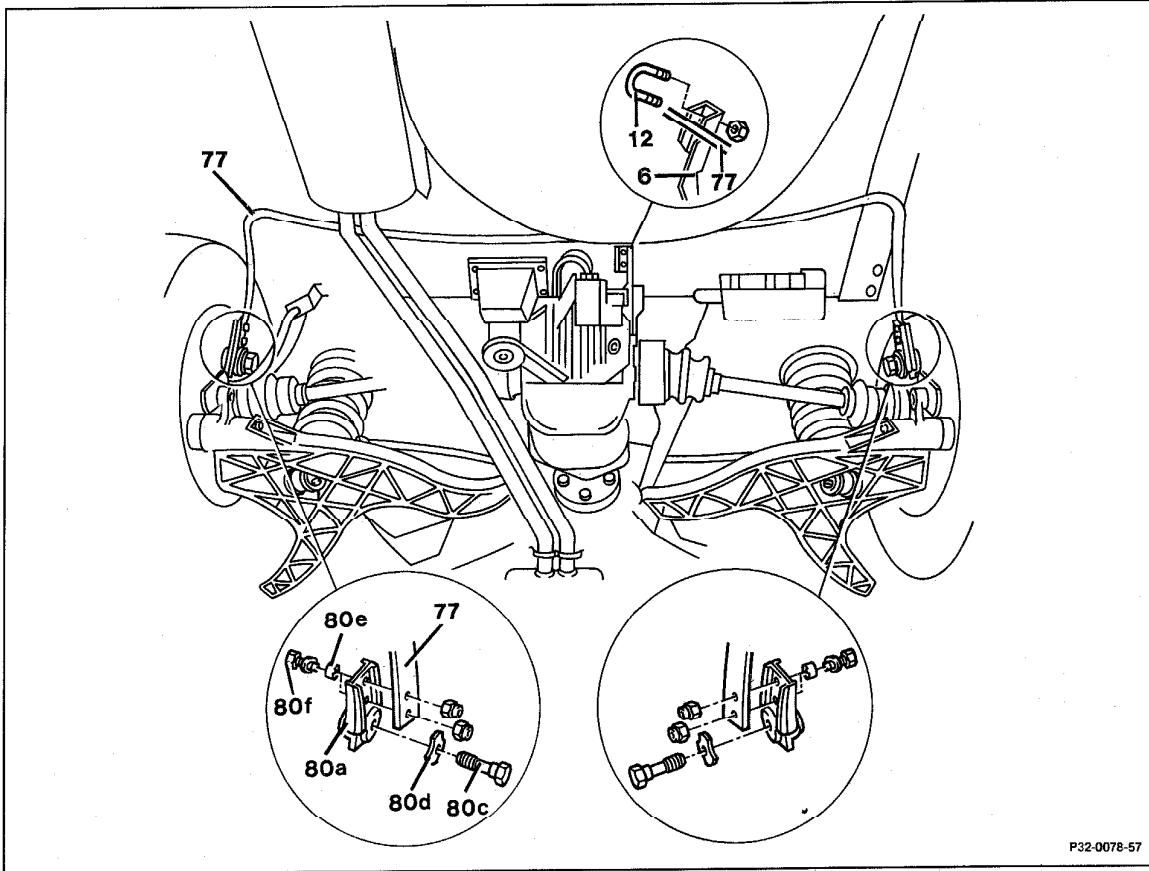


32-325 R and R wheel carrier support on stabilizer bar



P32-0078-57

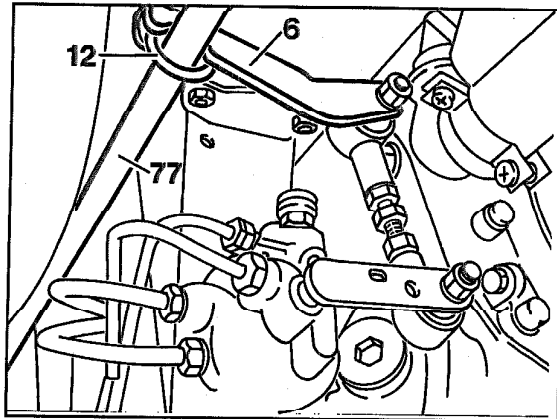
P32-0078-57

- | | |
|--|---|
| <p>On vehicles with automatic level control</p> <p>Necked-down bolts (80c) for left and right wheel carrier support</p> <p>Vehicle</p> <p>Two hex. head bolts (80f) for tabs (80a)</p> | <p>loosen bracket (12) and remove lever (6) from stabilizer bar (77). After assembly check control point, adjust (40-310).</p> <p>screw out, 80 Nm, and remove washers (80d). jack up, lower. Remove both rear wheels (wheel lug bolts 110 Nm).</p> <p>on left and right sides of stabilizer bar (77) loosen, tighten and remove bushings (80e), 25 Nm.</p> |
|--|---|

32-325 R and R wheel carrier support on stabilizer bar

Removal

1 On vehicles with automatic level control remove bracket (12) and separate lever (6) from stabilizer bar (77).



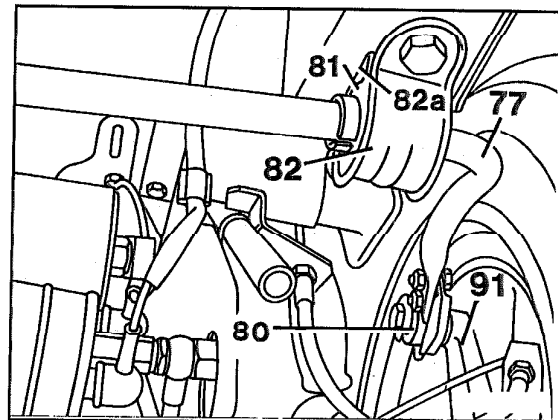
P32-5295-13A

Illustrated on rear axle with anti-squat geometry and automatic level control 2nd version as of 9.85

2 Screw out necked down bolts for wheel carrier support on left and right.

3 Jack up vehicle and remove both rear wheels.

4 Loosen the two hex. head bolts for the tabs on the left and right sides of the stabilizer bar and remove both tabs.



P32-2228-13

- 77 Stabilizer bar
- 80 Support for wheel carrier on stabilizer bar
- 81 Rubber bushing
- 82 Bottom retaining bracket
- 82a Retaining plate
- 91 Wheel carrier

Installation

5 Insert the clamping sleeves into the new tabs with the tapered side pointing toward the stabilizer bar.

Note

The clamping sleeves must be flush with the tab.

6 Install tabs on left and right of stabilizer bar with hex. head bolts (80f), 25 Nm.

7 Check condition of threads for necked down bolts in wheel carrier, chase, if required.

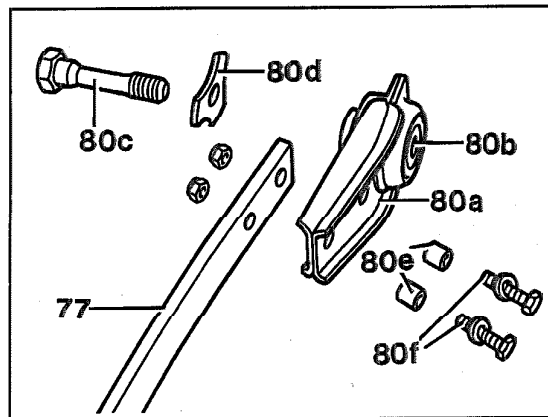
8 Mount both rear wheels (wheel lug bolts 110 Nm).

9 Connect stabilizer bar support (80) with wheel carrier (91).

Note

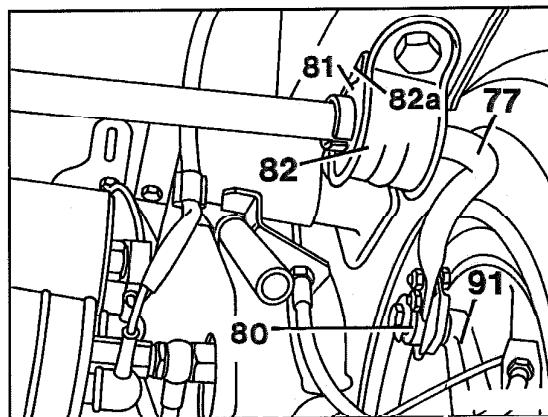
The contact surfaces must be absolutely clean and free of grease and oil. When tightening ensure that the inner bushing for the rubber bushing is properly seated on the wheel carrier.

Tighten necked down bolt for wheel carrier support on stabilizer bar only with vehicle sitting on wheels ready-to-drive (80 Nm).



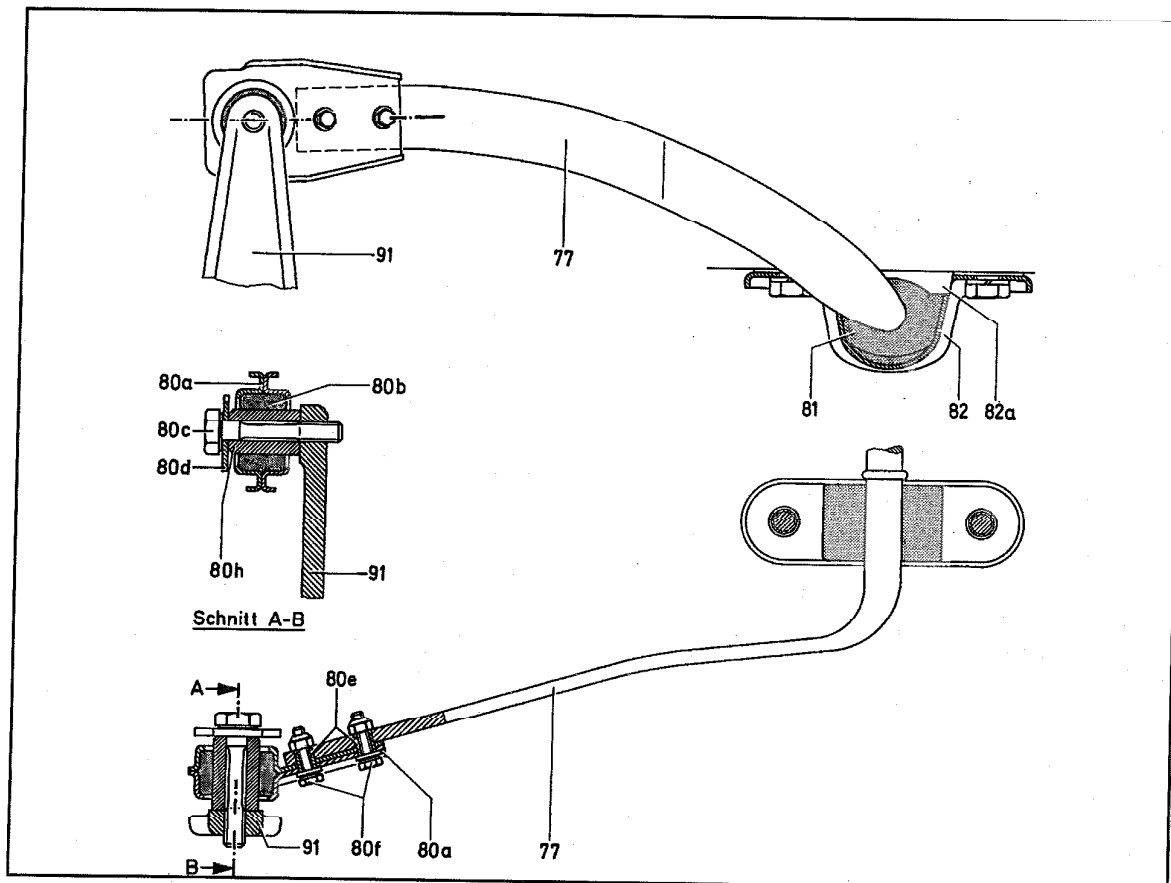
P32-2214-13

- 77 Stabilizer bar
- 80a Tab
- 80b Rubber bushing
- 80c Necked down bolt
- 80d Washer
- 80e Clamping sleeve
- 80f Hex. head bolts with washers and self-locking nuts



P32-2228-13

32-325 R and R wheel carrier support on stabilizer bar



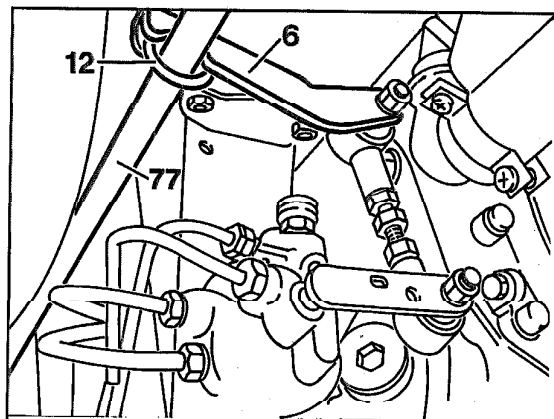
U32-5291-57

- 77 Stabilizer bar
- 80a Tab
- 80b Rubber bushing
- 80c Necked down bolt
- 80d Washer
- 80e Clamping sleeves
- 80f Hex. head bolts with washers and self-locking nuts

- 80h Inner bushing for rubber bushing
- 81 Rubber bushing for stabilizer bar mount on frame floor
- 82 Bottom retaining bracket
- 82a Retaining plate
- 82b Hex. head bolt
- 91 Wheel carrier

10 Additional work on vehicles with level control:

- a) Fasten lever (6) to stabilizer bar (77) by attaching bracket (12).
- b) Vehicle level at rear axle: Check control point, adjust (40-310).

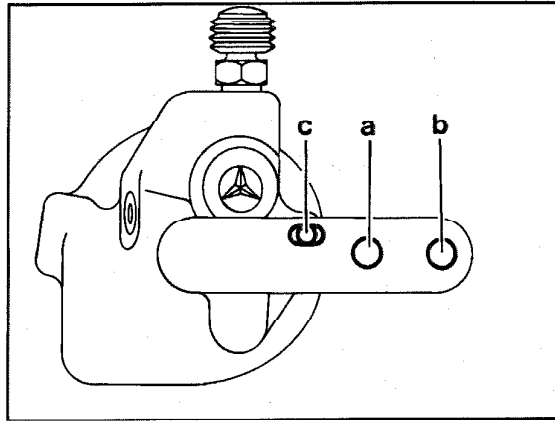


P32-5295-13A

Illustrated on rear axle with anti-squat geometry and automatic level control 2nd version as of 9.85

32-325 R and R wheel carrier support on stabilizer bar

The link is inserted into hole "a" on vehicles without anti-squat geometry, into hole "b" on vehicles with anti-squat geometry.



c = Locating holes in lever and in housing with automatic level control shaft in center position for 4 mm dia. pin

P32-5543-13