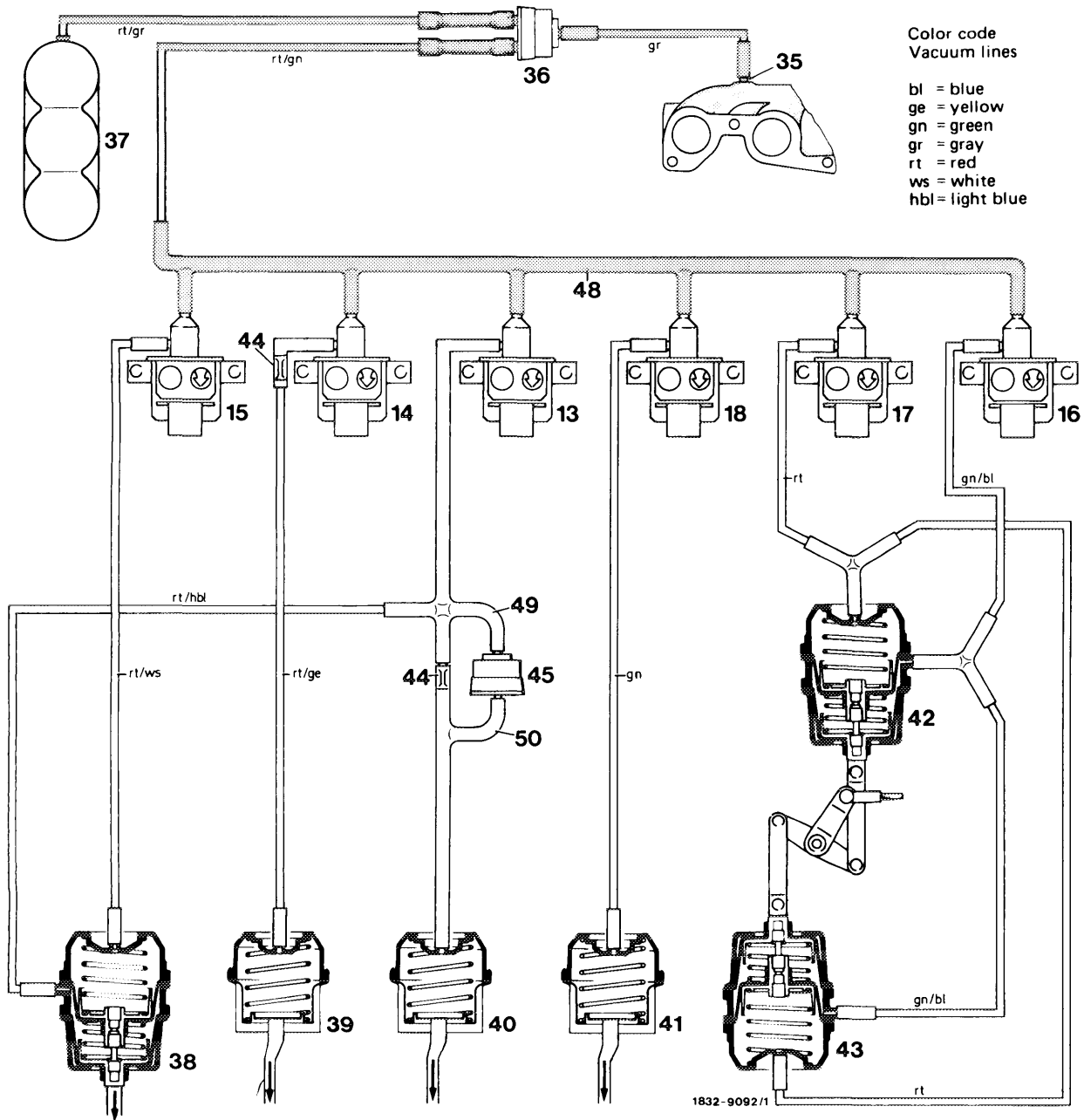
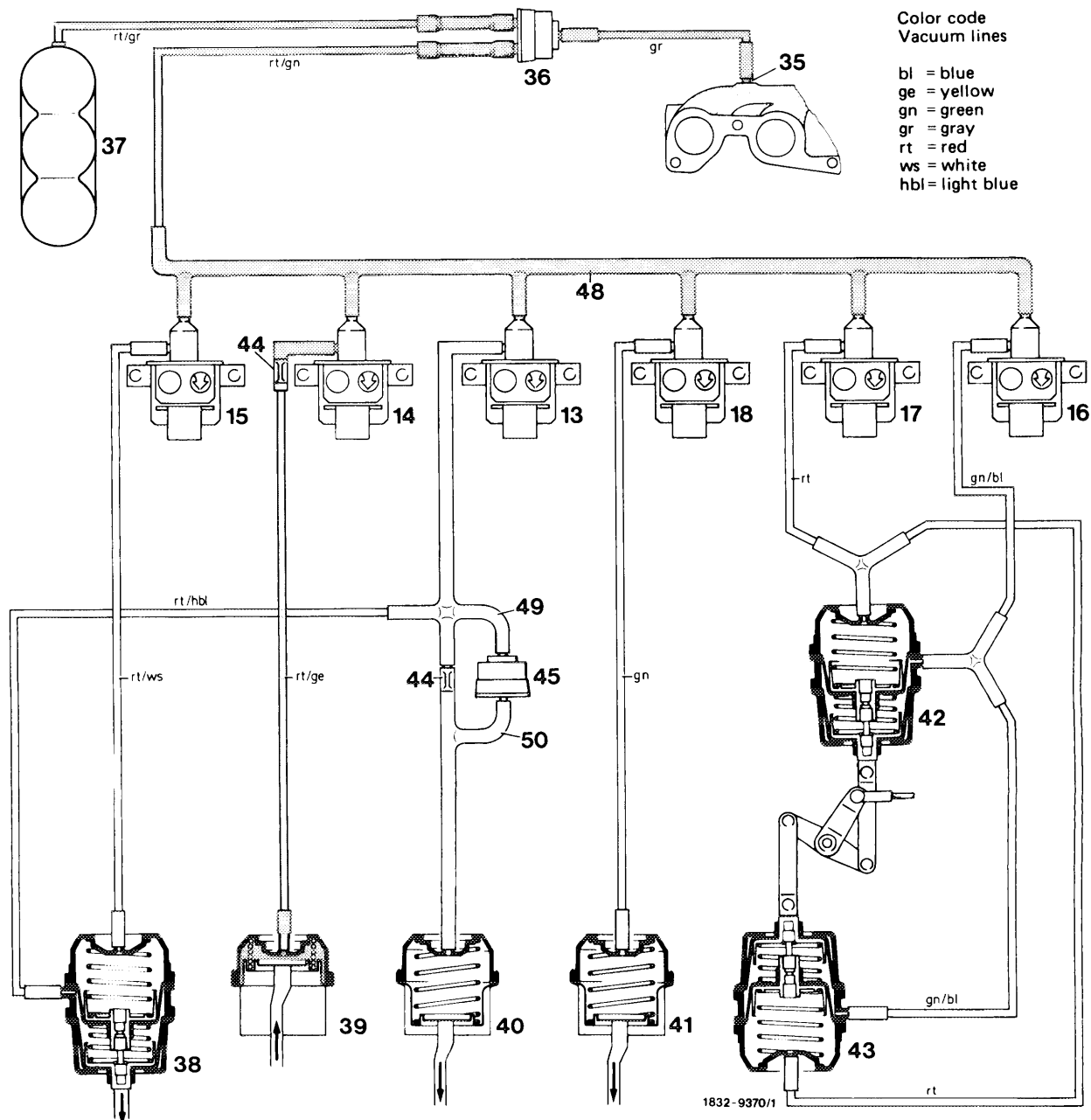


83-604 Vacuum function diagram



Function diagram 1, function selection "a" (defrosting)

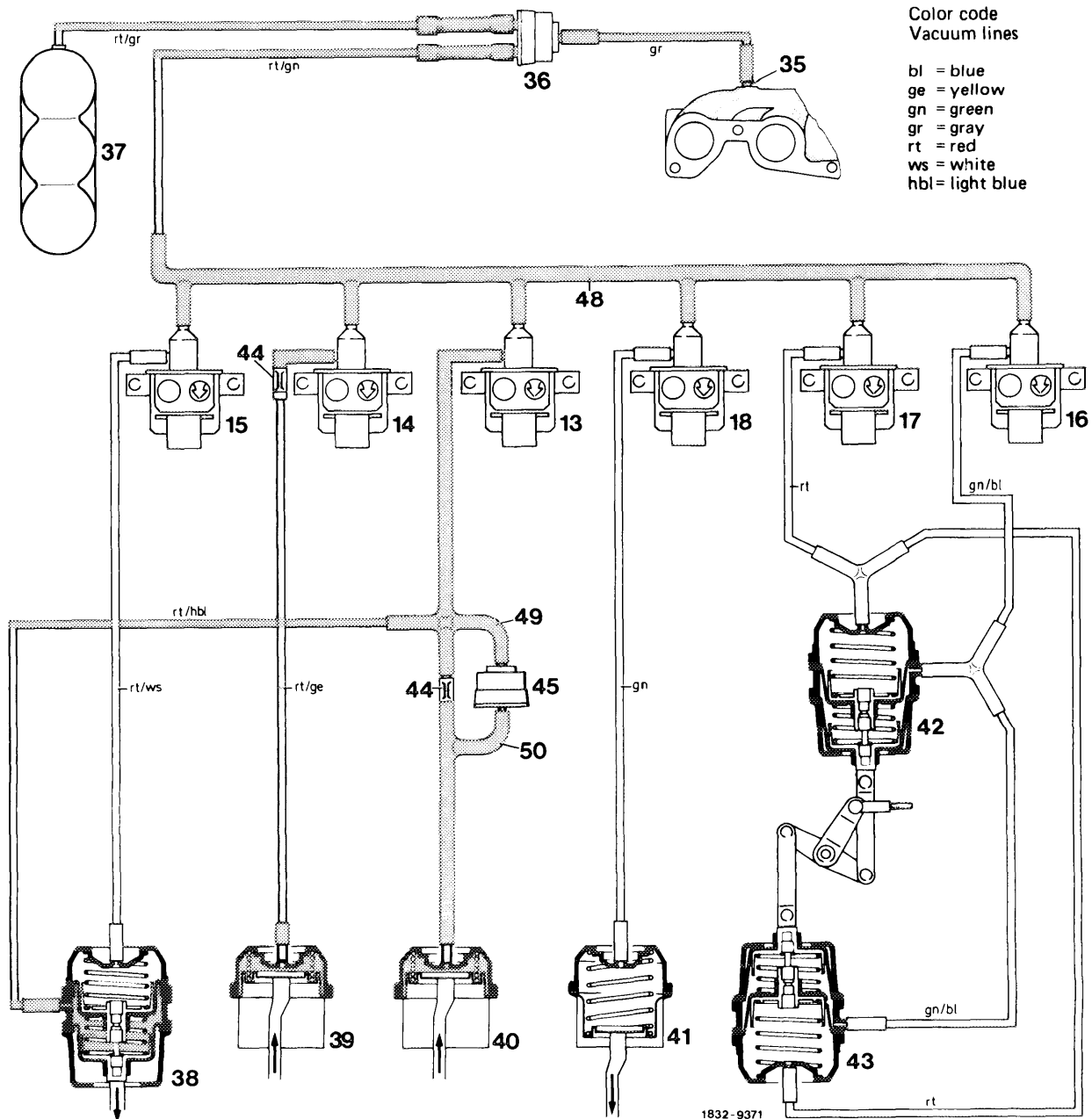
- | | |
|---|---|
| <p>13 Switchover valve for center nozzle flap</p> <p>14 Switchover valve for leg room flaps</p> <p>15 Switchover valve for defroster nozzle flaps</p> <p>16 Switchover valve for vacuum elements of fresh air-recirculated air flap and main air flap (small stroke)</p> <p>17 Switchover valve for vacuum elements of fresh air-recirculated air flap and main air flap (large stroke)</p> <p>18 Switchover valve for scoop air flap</p> <p>35 Vacuum connection on intake pipe</p> <p>36 Check valve</p> <p>37 Vacuum reservoir</p> <p>38 Vacuum element for defroster nozzle flaps (flaps "open")</p> <p>39 Vacuum element for leg room flaps (flaps "closed")</p> | <p>40 Vacuum element for center nozzle flap (flap "closed")</p> <p>41 Vacuum element for scoop air flap (flap "closed")</p> <p>42 Vacuum element for fresh air-recirculated air flap and main air flap (flap "open", 100 % fresh air supply)</p> <p>43 Vacuum element for fresh air-recirculated air flap and main air flap (flap "open", 100 % fresh air supply)</p> <p>44 Orifice</p> <p>45 Check valve</p> <p>48 7-point distributor</p> <p>49 4-point distributor</p> <p>50 3-point distributor</p> |
|---|---|



Function diagram 2, function selection "b", heating

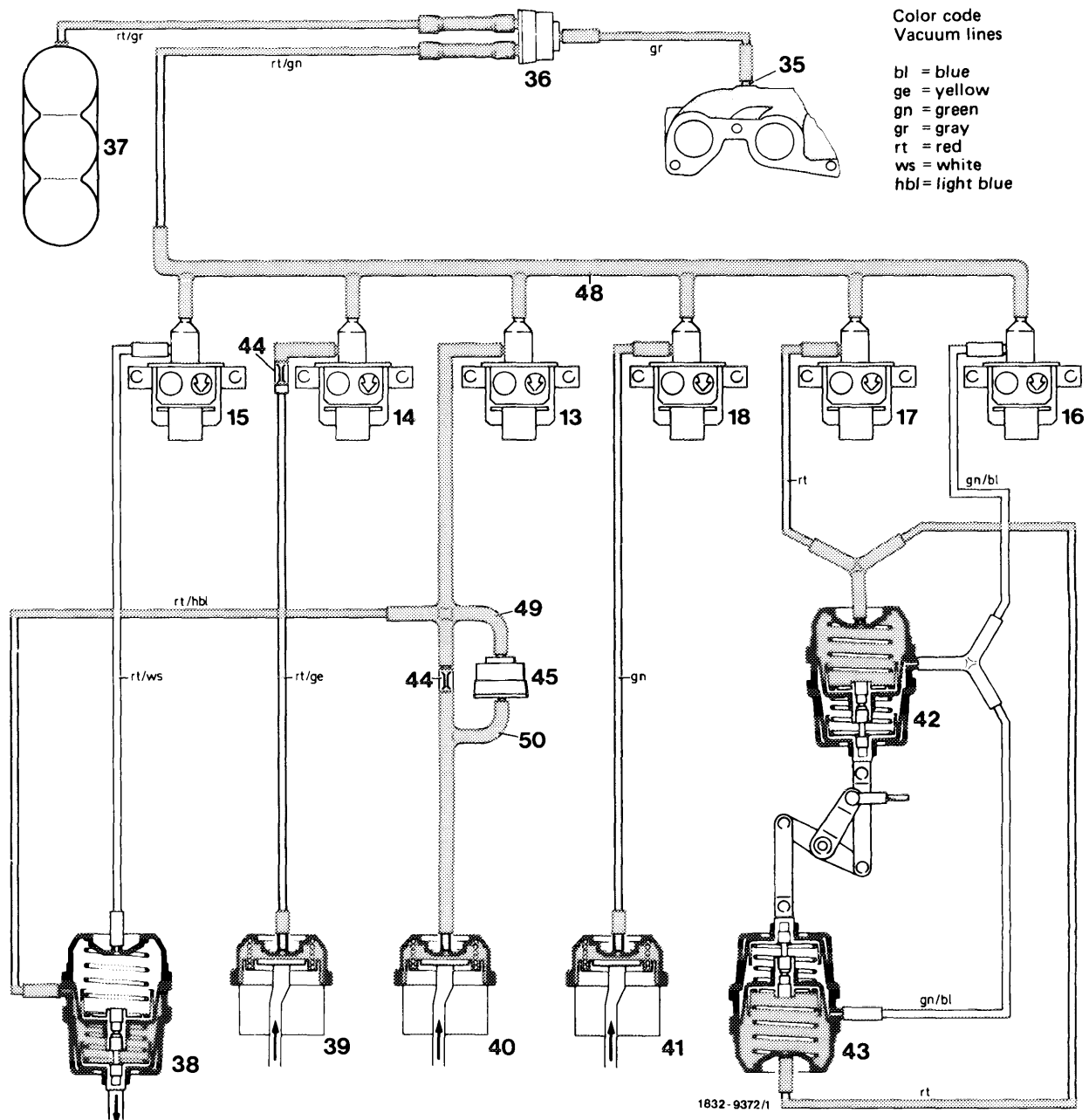
- 13 Switchover valve for center nozzle flap
- 14 Switchover valve for leg room flaps
- 15 Switchover valve for defroster nozzle flaps
- 16 Switchover valve for vacuum elements of fresh air-recirculated air flap and main air flap (small stroke)
- 17 Switchover valve for vacuum elements of fresh air-recirculated air flap and main air flap (large stroke)
- 18 Switchover valve for scoop air flap
- 35 Vacuum connection on intake pipe
- 36 Check valve
- 37 Vacuum reservoir
- 38 Vacuum element for defroster nozzle flaps (flaps "open")
- 39 Vacuum element for leg room flaps (flaps "open")

- 40 Vacuum element for center nozzle flap (flap "closed")
- 41 Vacuum element for scoop air flap (flap "closed")
- 42 Vacuum element for fresh air-recirculated air flap and main air flap (flap "open", 100 % fresh air supply)
- 43 Vacuum element for fresh air-recirculated air flap and main air flap (flap "open", 100 % fresh air supply)
- 44 Orifice
- 45 Check valve
- 48 7-point distributor
- 49 4-point distributor
- 50 3-point distributor



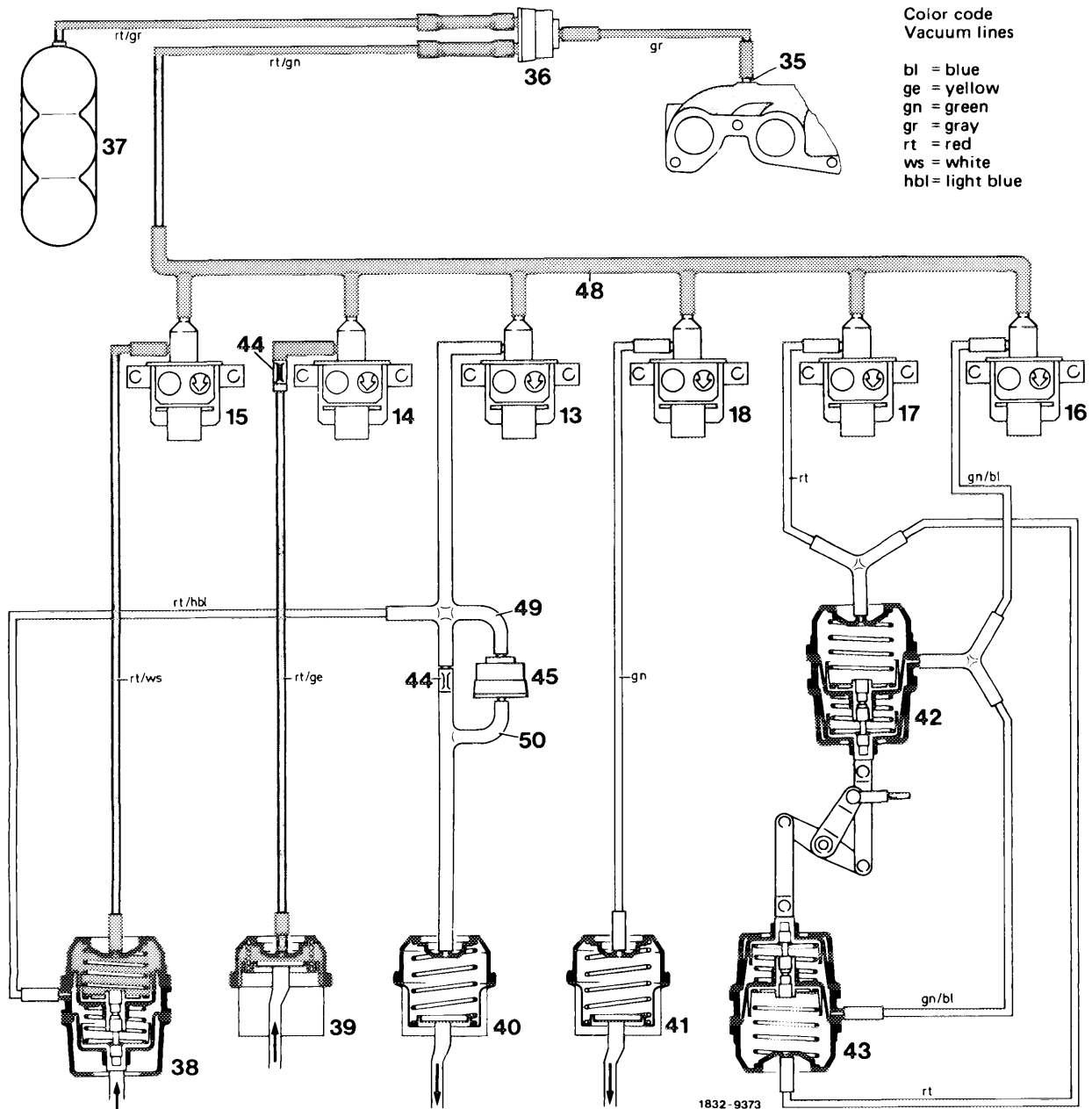
Function diagram 2 a, function selection "b", cooling

- | | |
|---|---|
| <p>13 Switchover valve for center nozzle flap</p> <p>14 Switchover valve for leg room flaps</p> <p>15 Switchover valve for defroster nozzle flaps</p> <p>16 Switchover valve for vacuum elements of fresh air-recirculated air flap and main air flap (small stroke)</p> <p>17 Switchover valve for vacuum elements of fresh air-recirculated air flap and main air flap (large stroke)</p> <p>18 Switchover valve for scoop air flap</p> <p>35 Vacuum connection on intake pipe</p> <p>36 Check valve</p> <p>37 Vacuum reservoir</p> <p>38 Vacuum element for defroster nozzle flaps (flaps "open")</p> <p>39 Vacuum element for leg room flaps (flaps "open")</p> | <p>40 Vacuum element for center nozzle flap (flap "open")</p> <p>41 Vacuum element for scoop air flap (flap "closed")</p> <p>42 Vacuum element for fresh air recirculated air flap and main air flap (flap "open", 100 % fresh air supply)</p> <p>43 Vacuum element for fresh air-recirculated air flap and main air flap (flap "open", 100 % fresh air supply)</p> <p>44 Orifice</p> <p>45 Check valve</p> <p>48 7-point distributor</p> <p>49 4-point distributor</p> <p>50 3-point distributor</p> |
|---|---|



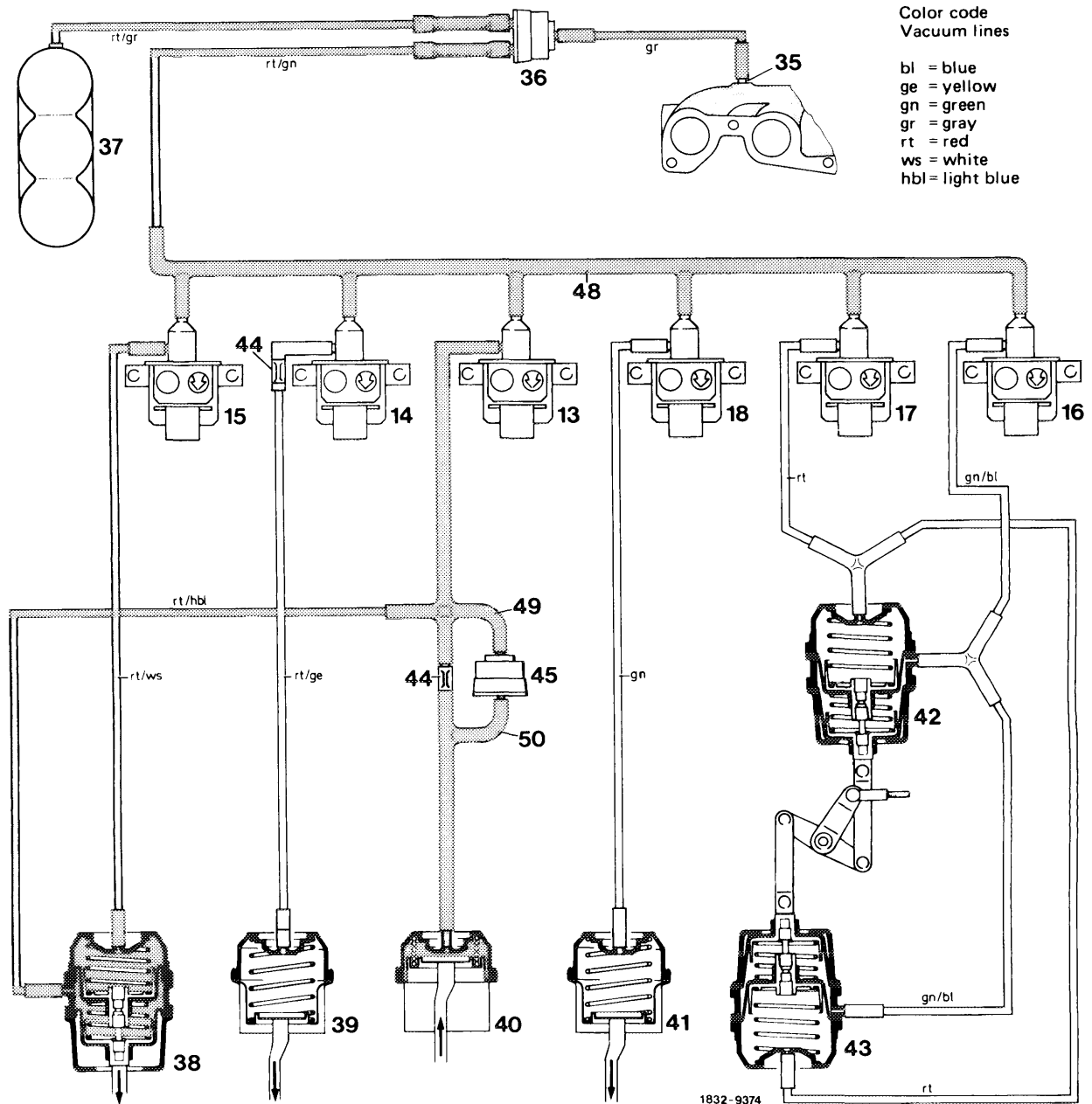
Function diagram 2 b, function selection "b", max. cooling

- | | |
|---|---|
| 13 Switchover valve for center nozzle flap | 40 Vacuum element for center nozzle flap (flap "open") |
| 14 Switchover valve for leg room flaps | 41 Vacuum element for scoop air flap (flap "open") |
| 15 Switchover valve for defroster nozzle flaps | 42 Vacuum element for fresh air-recirculated air flap and main air flap (flap "open", 20 % fresh air supply and 80 % ambient air) |
| 16 Switchover valve for vacuum elements of fresh air-recirculated air flap and main air flap (small stroke) | 43 Vacuum element for fresh air-recirculated air flap and main air flap (flap "open", 20 % fresh air supply and 80 % ambient air) |
| 17 Switchover valve for vacuum elements of fresh air-recirculated air flap and main air flap (large stroke) | 44 Orifice |
| 18 Switchover valve for scoop air flap | 45 Check valve |
| 35 Vacuum connection on intake pipe | 48 7-point distributor |
| 36 Check valve | 49 4-point distributor |
| 37 Vacuum reservoir | 50 3-point distributor |
| 38 Vacuum element for defroster nozzle flaps (flaps "open") | |
| 39 Vacuum element for leg room flaps (flaps "open") | |



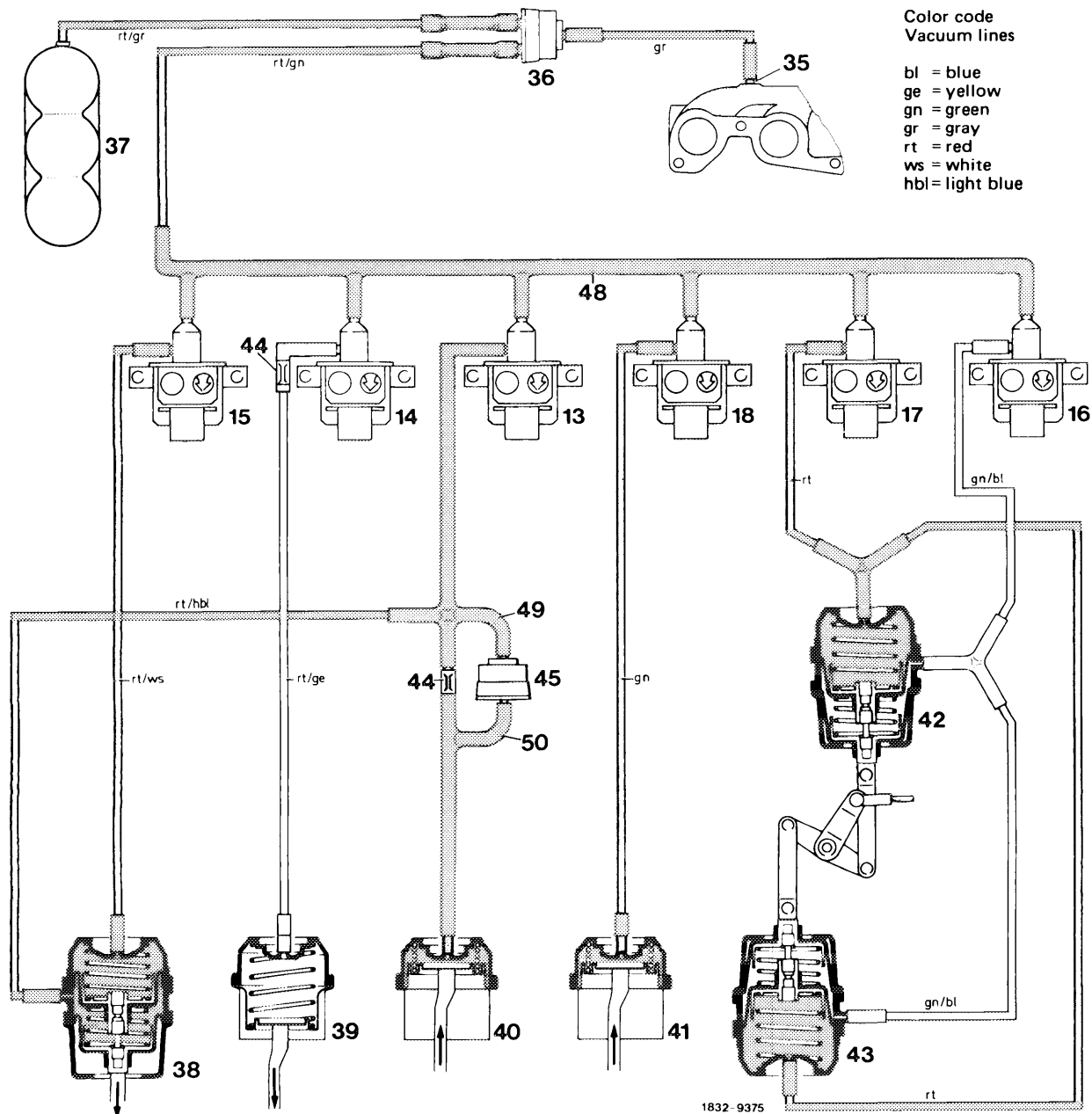
Function diagram 3, function selection "c" heating

- | | |
|--|---|
| <p>13 Switchover valve for center nozzle flap
14 Switchover valve for leg room flaps
15 Switchover valve for defroster nozzle flaps
16 Switchover valve for vacuum elements of fresh air-recirculated air flap and main air flap (small stroke)
17 Switchover valve for vacuum elements of fresh air-recirculated air flap and main air flap (large stroke)
18 Switchover valve for scoop air flap
35 Vacuum connection on intake pipe
36 Check valve
37 Vacuum reservoir
38 Vacuum element for defroster nozzle flaps (flaps "closed", with leak air share)
39 Vacuum element for leg room flaps (flaps "open")</p> | <p>40 Vacuum element for center nozzle flap (flap "closed")
41 Vacuum element for scoop air flap (flap "closed")
42 Vacuum element for fresh air-recirculated air flap and main air flap (flap "open", 100 % fresh air supply)
43 Vacuum element for fresh air-recirculated air flap and main air flap (flap "open", 100 % fresh air supply)
44 Orifice
45 Check valve
48 7-point distributor
49 4-point distributor
50 3-point distributor</p> |
|--|---|



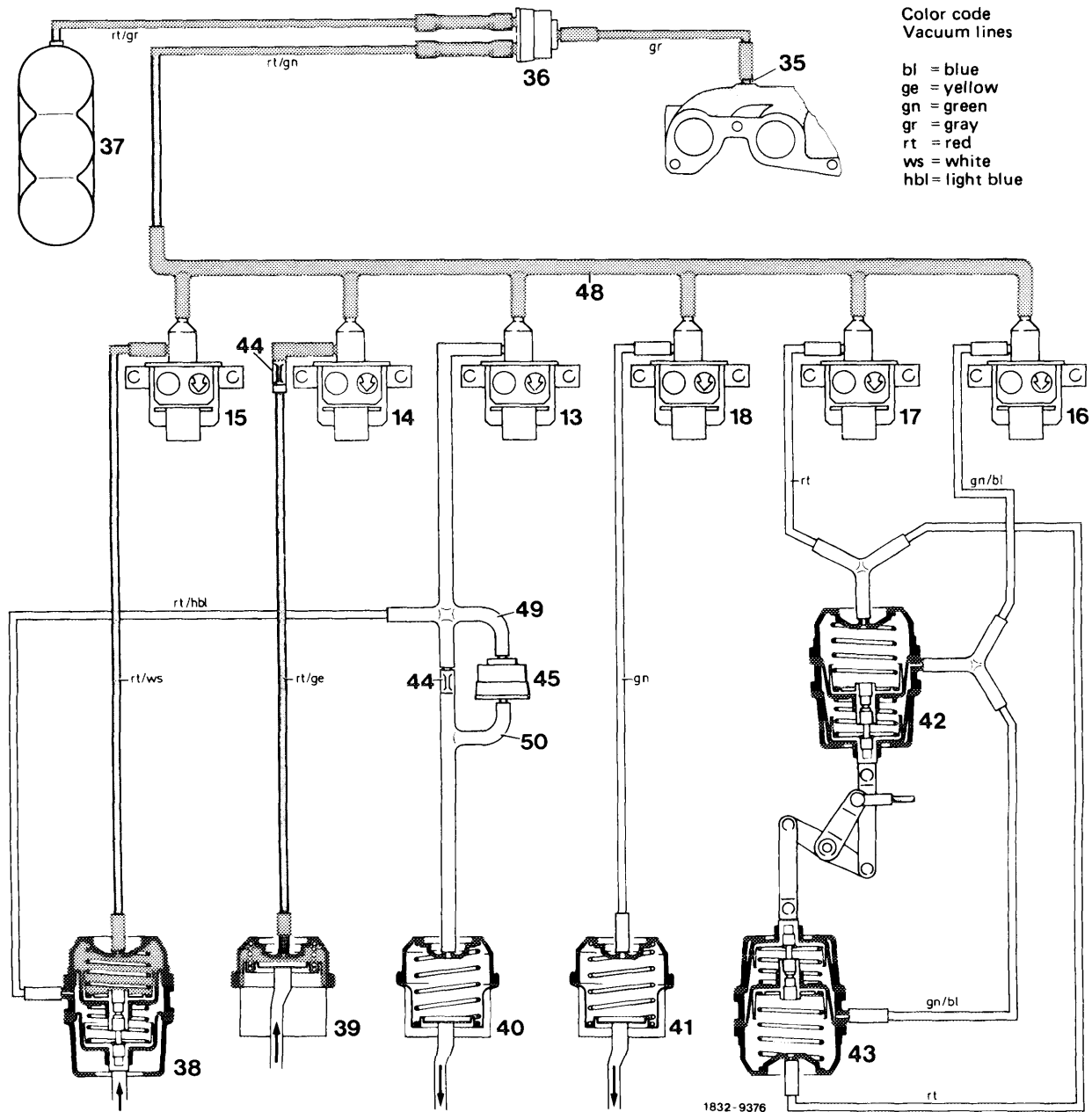
Function diagram 3 a, function selection "c", cooling

- | | |
|---|---|
| <p>13 Switchover valve for center nozzle flap</p> <p>14 Switchover valve for leg room flaps</p> <p>15 Switchover valve for defroster nozzle flaps</p> <p>16 Switchover valve for vacuum elements of fresh air-recirculated air flap and main flap (small stroke)</p> <p>17 Switchover valve for vacuum elements of fresh air-recirculated air flap and main air flap (large stroke)</p> <p>18 Switchover valve for scoop air flap</p> <p>35 Vacuum connection on intake pipe</p> <p>36 Check valve</p> <p>37 Vacuum reservoir</p> <p>38 Vacuum element for defroster nozzle flaps (flaps "closed")</p> <p>39 Vacuum element for leg room flaps (flaps "closed")</p> | <p>40 Vacuum element for center nozzle flap (flap "open")</p> <p>41 Vacuum element for scoop air flap (flap "closed")</p> <p>42 Vacuum element for fresh air-recirculated air flap and main air flap (flap "open", 100 % fresh air supply)</p> <p>43 Vacuum element for fresh air-recirculated air flap and main air flap (flap "open", 100 % fresh air supply)</p> <p>44 Orifice</p> <p>45 Check valve</p> <p>48 7-point distributor</p> <p>49 4-point distributor</p> <p>50 3-point distributor</p> |
|---|---|



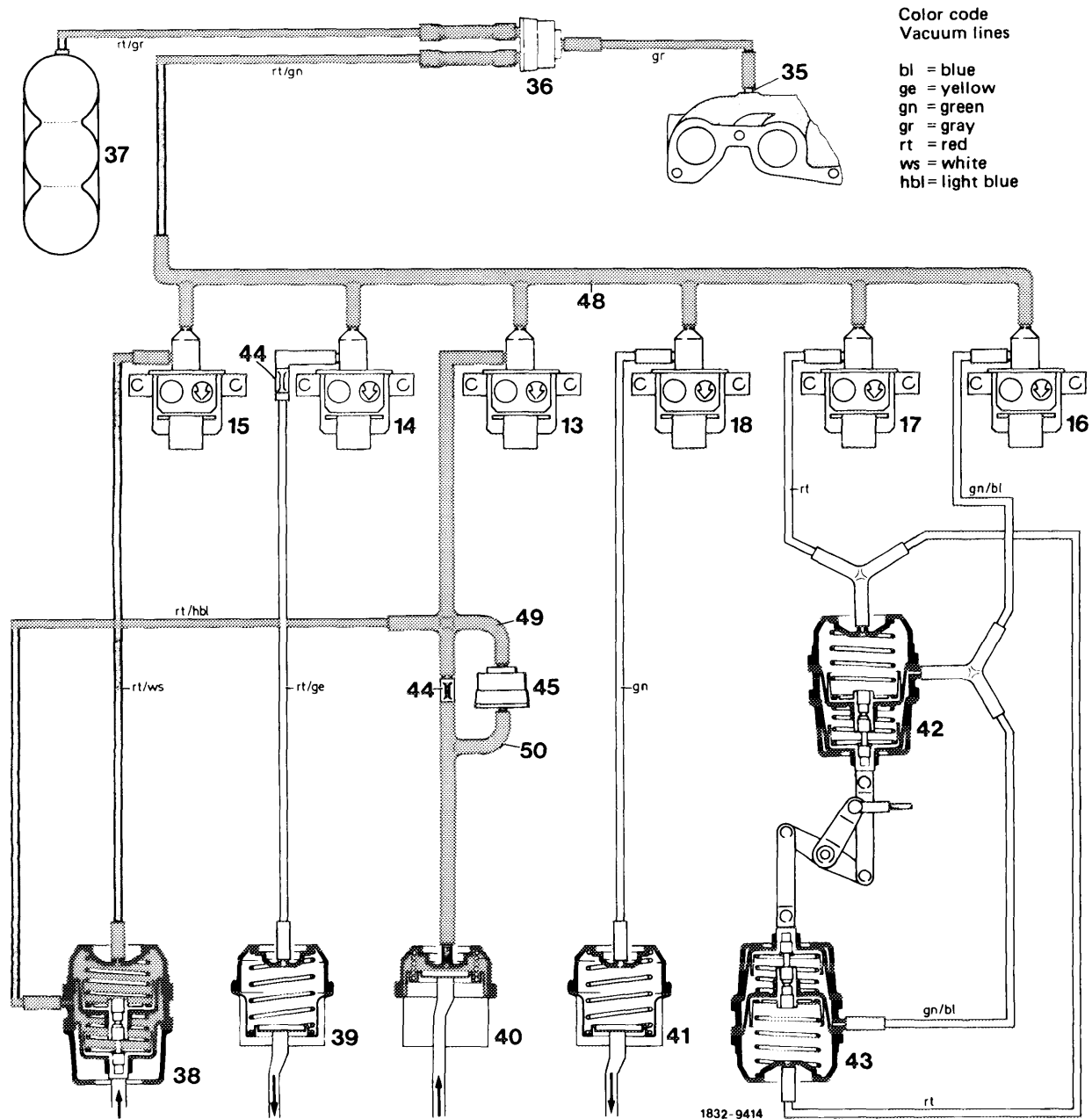
Function diagram 3 b, function selection "c", max. cooling ("MIN" in detent position)

- | | |
|--|--|
| <ul style="list-style-type: none"> 13 Switchover valve for center nozzle flap 14 Switchover valve for leg room flaps 15 Switchover valve for defroster nozzle flaps 16 Switchover valve for vacuum elements of fresh air-recirculated air flap and main air flap (small stroke) 17 Switchover valve for vacuum elements of fresh air-recirculated air flap and main air flap (large stroke) 18 Switchover valve for scoop air flap 35 Vacuum connection on intake pipe 36 Check valve 37 Vacuum reservoir 38 Vacuum element for defroster nozzle flaps (flaps "closed") 39 Vacuum element for leg room flaps (flaps "closed") | <ul style="list-style-type: none"> 40 Vacuum element for center nozzle flap (flap "open") 41 Vacuum element for scoop air flap (flap "open") 42 Vacuum element for fresh air-recirculated air flap and main air flap (flap "open", 20 % fresh air supply and 80 % ambient air) 43 Vacuum element for fresh air-recirculated air flap and main air flap (flap "open", 20 % fresh air supply and 80 % ambient air) 44 Orifice 45 Check valve 48 7-point distributor 49 4-point distributor 50 3-point distributor |
|--|--|



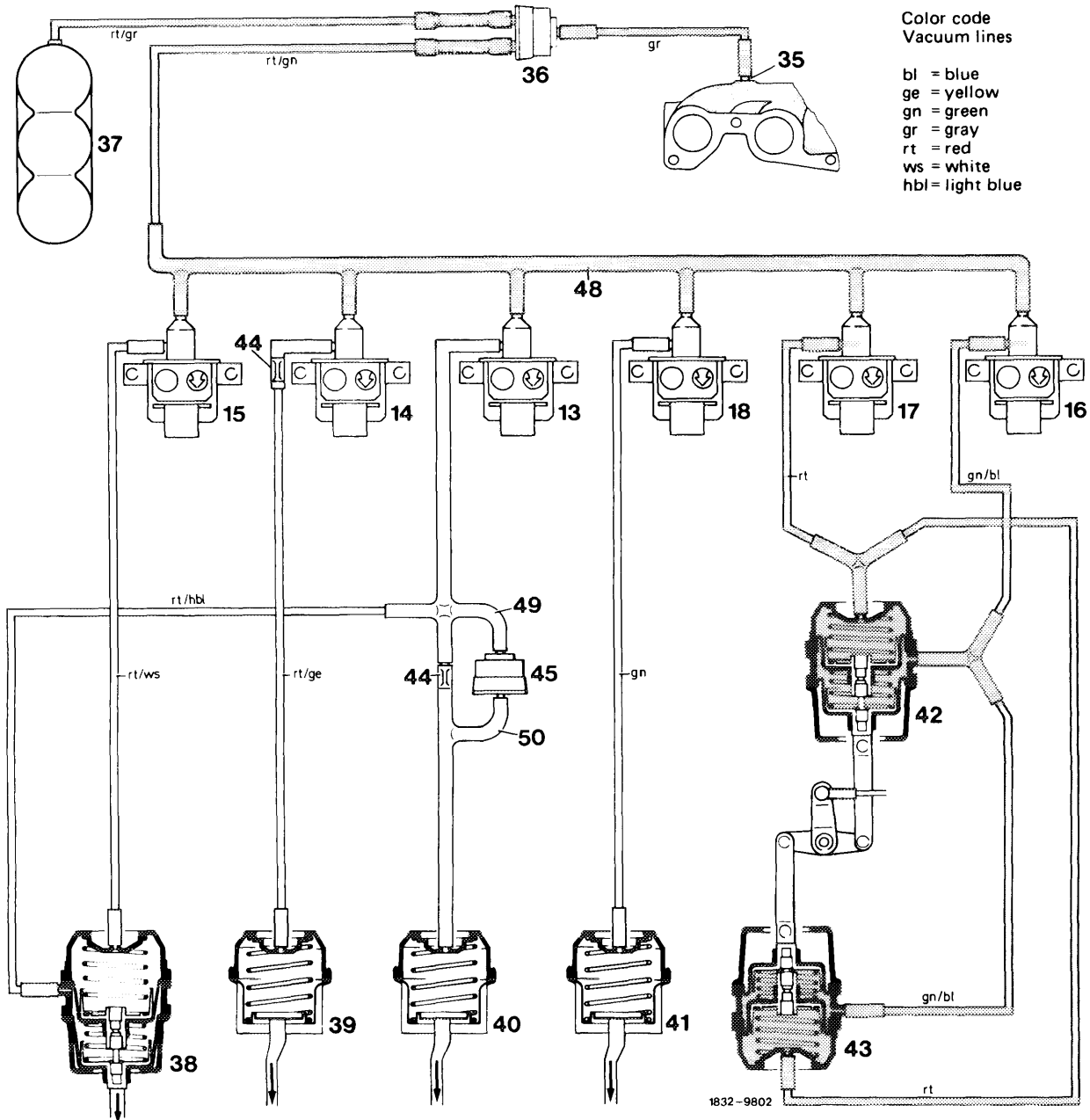
Function diagram 4, function selection "d", heating (ECONOMY)

- | | |
|---|---|
| 13 Switchover valve for center nozzle flap | 40 Vacuum element for center nozzle flap (flap "closed") |
| 14 Switchover valve for leg room flaps | 41 Vacuum element for scoop air flap (flap "closed") |
| 15 Switchover valve for defroster nozzle flaps | 42 Vacuum element for fresh air-recirculated air flap and main air flap (flap "open", 100 % fresh air supply) |
| 16 Switchover valve for vacuum elements of fresh air-recirculated air flap and main air flap (small stroke) | 43 Vacuum element for fresh air-recirculated air flap and main air flap (flap "open", 100 % fresh air supply) |
| 17 Switchover valve for vacuum elements of fresh air-recirculated air flap and main air flap (large stroke) | 44 Orifice |
| 18 Switchover valve for scoop air flap | 45 Check valve |
| 35 Vacuum connection on intake pipe | 48 7-point distributor |
| 36 Check valve | 49 4-point distributor |
| 37 Vacuum reservoir | 50 3-point distributor |
| 38 Vacuum element for defroster nozzle flaps (flaps "closed", with leak air share) | |
| 39 Vacuum element for leg room flaps (flaps "open") | |



Function diagram 4 a, function selection "d", cooling (ECONOMY)

- | | |
|---|---|
| 13 Switchover valve for center nozzle flap | 40 Vacuum element for center nozzle flap (flap "open") |
| 14 Switchover valve for leg room flaps | 41 Vacuum element for scoop air flap (flap "closed") |
| 15 Switchover valve for defroster nozzle flaps | 42 Vacuum element for fresh air-recirculated air flap and main air flap (flap "open", 100 % fresh air supply) |
| 16 Switchover valve for vacuum elements of fresh air recirculated air flap and main air flap (small stroke) | 43 Vacuum element for fresh air-recirculated air flap and main air flap (flap "open", 100 % fresh air supply) |
| 17 Switchover valve for vacuum elements of fresh air-recirculated air flap and main air flap (large stroke) | 44 Orifice |
| 18 Switchover valve for scoop air flap | 45 Check valve |
| 35 Vacuum connection on intake pipe | 48 7-point distributor |
| 36 Check valve | 49 4-point distributor |
| 37 Vacuum reservoir | 50 3-point distributor |
| 38 Vacuum element for defroster nozzle flaps (flaps "closed") | |
| 39 Vacuum element for leg room flaps (flaps "closed") | |



Function diagram 5, function selection "e" (OFF) temperature dial set to "MIN" detent position

- | | |
|--|---|
| <p>13 Switchover valve for center nozzle flap
14 Switchover valve for leg room flaps
15 Switchover valve for defroster nozzle flaps
16 Switchover valve for vacuum elements of fresh air-recirculated air flap and main air flap (small stroke)
17 Switchover valve for vacuum elements of fresh air-recirculated air flap and main air flap (large stroke)
18 Switchover valve for scoop air flap
35 Vacuum connection on intake pipe
36 Check valve
37 Vacuum reservoir
38 Vacuum element for defroster nozzle flaps (flaps "open")
39 Vacuum element for leg room flap (flaps "closed")</p> | <p>40 Vacuum element for center nozzle flap (flap "closed")
41 Vacuum element for scoop air flap (flap "closed")
42 Vacuum element for fresh-air recirculated air flap and main air flap (flap "closed", no fresh air supply)
43 Vacuum element for fresh-air recirculated air flap and main air flap (flap "closed", no fresh air supply)
44 Orifice
45 Check valve
48 7-point distributor
49 4-point distributor
50 3-point distributor</p> |
|--|---|