

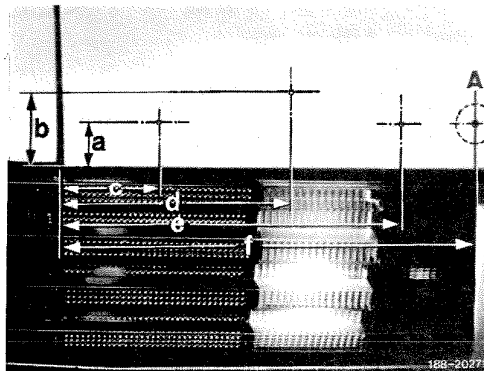
Note

A drill template (self-made; for dimensions refer to Figs.) will facilitate the job. When renewing a trunk lid, drill holes prior to painting.

A. Type rating plate left

- 1 Drill holes according to Fig.
- 2 Lightly punch-mark holes.
- 3 Drill holes at 4.2 mm dia.
- 4 Remove chips and treat holes with zinc dust paint.

a	33 mm	d	167 mm
b	56 mm	e	248 mm
c	70.5 mm	f	310.5 mm

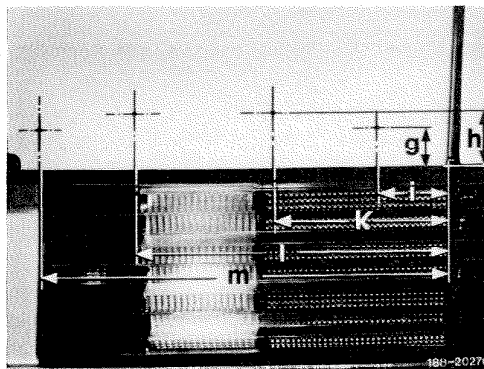


Note: Bore "A" is required on model "SEL" only.

B. Type rating plate "Turbo-Diesel" right

- 1 Mark holes according to Fig.
- 2 Lightly punch-mark holes.
- 3 Drill holes at 4.2 mm dia.
- 4 Remove chips and treat holes with zinc dust paint.

g	33 mm	k	130.9 mm
h	45 mm	l	235.6 mm
i	54 mm	m	307.4 mm



88-505 Attaching trunk lid model designation

C. Type rating plate glued on

During disassembly and assembly, heat type rating plates and adhesive surface to approx. 40 °C (heat radiator, hot air blower or the like) and exert pressure against type rating plate.

Layout on trunk lid, left

- a 40 mm (sedan)
- 35 mm (coupe)
- b 29 mm

