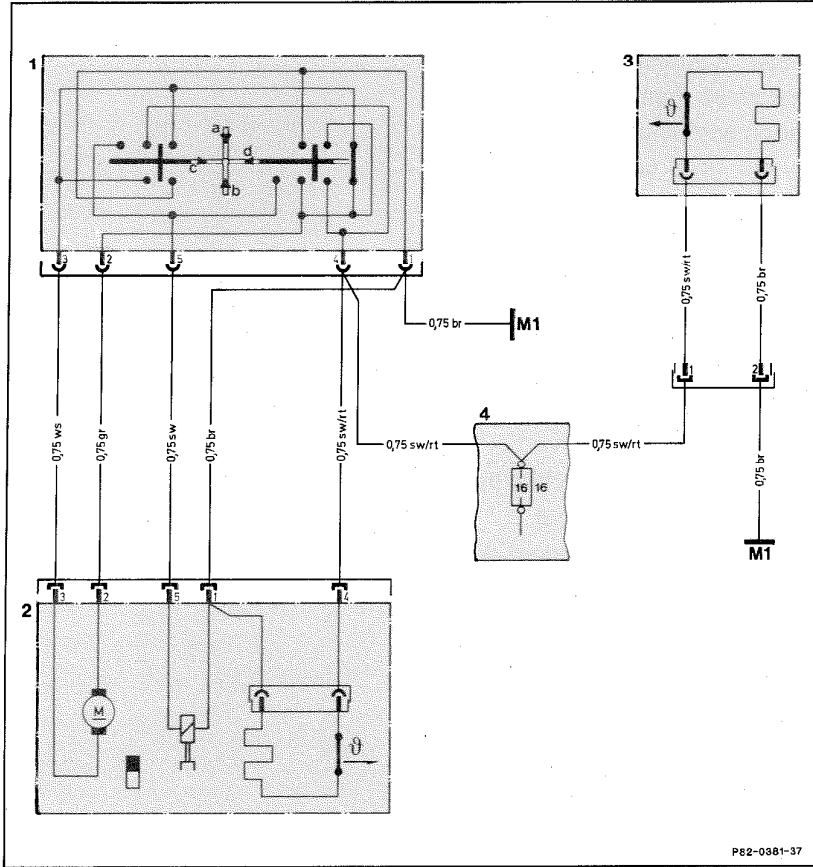


82-0834 Electrically heated outside mirror

A. Version up to 09/85



P82-0381-37

- | | |
|---|--|
| <p>1 Switch for mirror adjustment</p> <ul style="list-style-type: none"> a vertical, up b vertical, down c horizontal, to the inside d horizontal, to the outside | <p>2 Outside mirror, front passenger seat electrically adjustable with heating</p> <p>3 Outside mirror, driver's side with heating</p> <p>4 Fuse holder, fuse no. 16 (terminal 15)</p> <p>M1 Main ground (behind instrument cluster)</p> |
|---|--|

82-0834 Electrically heated outside mirror

General

Mechanically and electrically adjustable outside mirrors with electrical heating are available as special equipment. The heater is located behind the rear side of the mirror glass and permanently connected to the latter. A thermostat is also arranged on the rear of the mirror glass which switches the heater on and off as a function of temperature. The mirror glass can be separately replaced (88-900).

Function

The heater is operational in key position 2 (terminal 15).

The thermostat in the mirror glass switches the heater on at ambient temperatures below $5 \pm 3 \text{ }^{\circ}\text{C}$. The heater remains switched on up to an ambient temperature of $15 \pm 3 \text{ }^{\circ}\text{C}$ and switches off after this temperature has been reached.

Once the temperature falls again below $5 \pm 3 \text{ }^{\circ}\text{C}$, the heater is switched on again and continues to heat up to $15 \pm 3 \text{ }^{\circ}\text{C}$. This process is repeated until the ambient temperature on the mirror is always above $5 \pm 3 \text{ }^{\circ}\text{C}$ or the key is turned to positions 1 or 0.

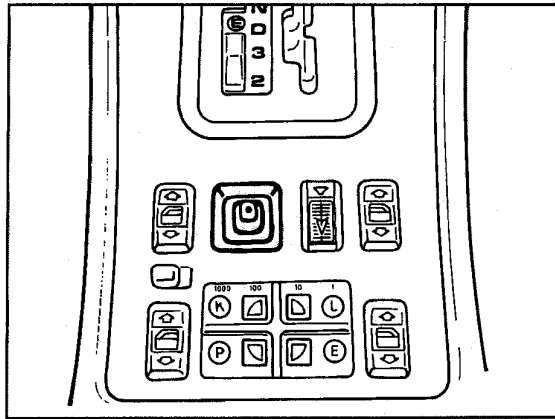
Power consumption

Switching-on current $\leq 4 \text{ A}$

Permanent current $\leq 1.5 \text{ A}$

B. Version as of 09/85

2-motor drive and heated as standard feature.



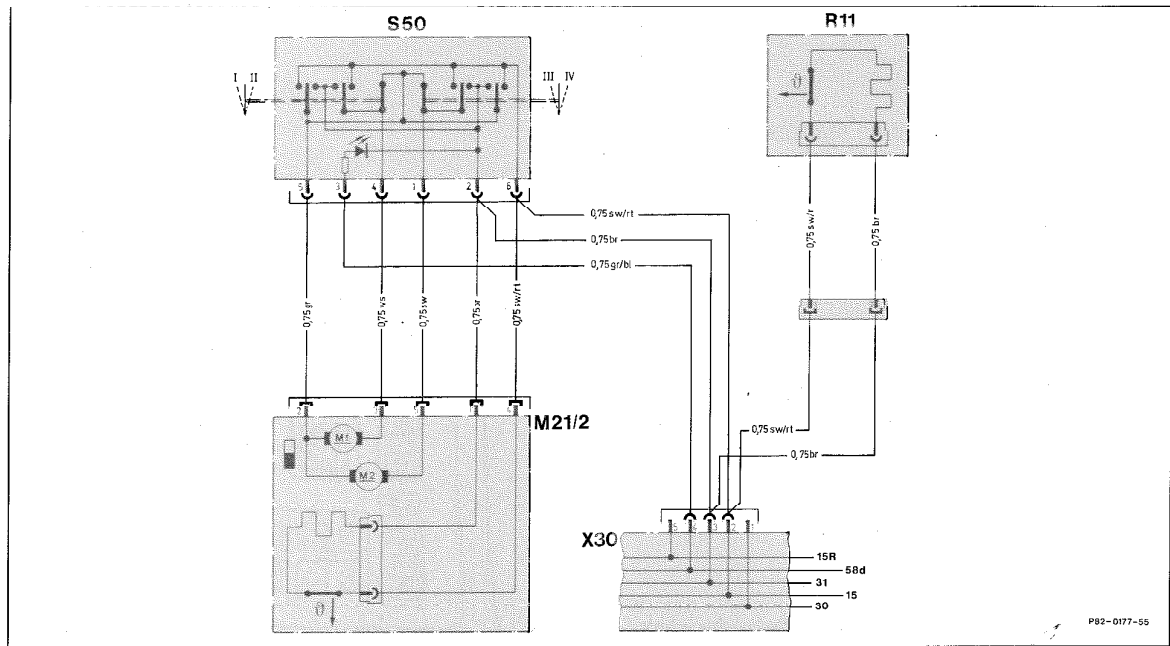
S50 Switch electrically adjustable outside mirror

P82-2745-13

General

The heater is located on the rear of the mirror glass and permanently connected to the latter. A thermostat is also arranged on the rear of the mirror glass which switches the heater on and off as a function of temperature. The mirror glass can be replaced separately (88-900).

82-0834 Electrically heated outside mirror



P82-0177-55

M21/2 Outside mirror front passenger electrically adjustable
 R11 Outside mirror driver electrically heated

S50 Switch electrically adjustable outside mirror
 X30 Connector special equipment strip

Function

The heater is operational in key position 2 (terminal 15).

The thermostat in the mirror glass switches the heater on at ambient temperatures below $< 15\text{ }^{\circ}\text{C}$. The heater remains operational up to an ambient temperature of $> 25\text{ }^{\circ}\text{C}$ and switches off after this temperature has been reached.

Once the temperature drops again below $< 15\text{ }^{\circ}\text{C}$, the heater is switched on again and heats up to $> 25\text{ }^{\circ}\text{C}$. This process is repeated until the ambient temperature on the mirror is always above $> 15\text{ }^{\circ}\text{C}$ or the key is turned to positions 1 or 0.

Power consumption

Switching-on current $\leq 4\text{ A}$

Permanent current $\leq 1.5\text{ A}$