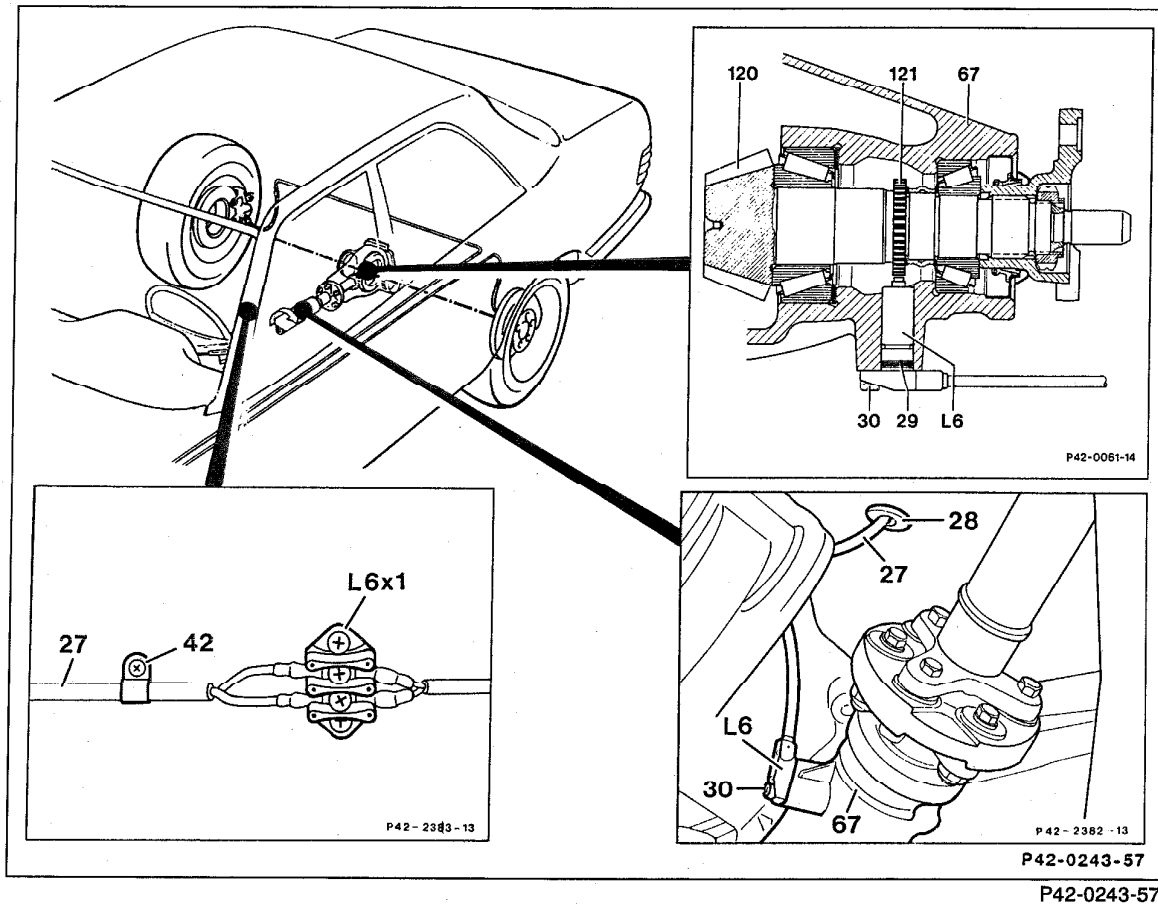


42-714 R and R rear axle VSS sensor (L6)

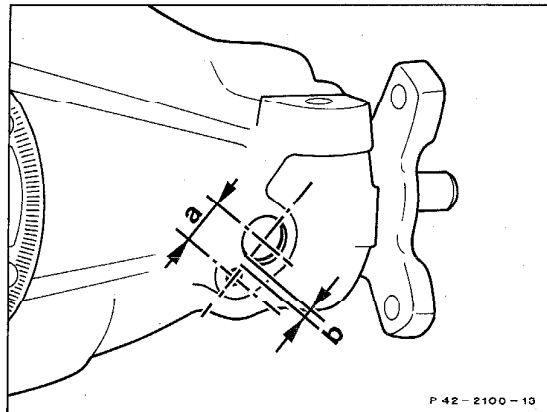


- | | |
|--|--|
| Rear seat and rear seat backrest | remove, install. |
| Plug (L6x1) | with the ignition switched off, loosen and disconnect. |
| Clips (42) | loosen, fasten. |
| Lead (27) | remove downwards through the rubber grommet (28) in the frame floor. |
| Self-locking hexagon socket screw (30) | unscrew, replace, 8 Nm. |

- Wheel speed sensor (L6) remove complete with lead (27). When installing, ensure that no metallic foreign bodies are located on the magnetic edge of the wheel speed sensor and that the O-ring (29) is not damaged. The flange of the wheel speed sensor must abut the rear axle casing (67).
- O-ring (29) check, replace if required.
- Test program complete (42-720).

Note

Since 03/86 a modified wheel speed sensor with a steel flange (previously plastic) has been installed. The steel and plastic versions of the wheel speed sensors are not interchangeable owing to different dimensions.



P42-2100-13

1st version (plastic flange)
a = 13.0 mm, b = 2.8 mm

2nd version (steel flange)
a = 15.7 mm, b = 5.5 mm

Assignment of rotor to rear axle

Ratio i Standard/ABS	Ratio i with ASD	Toothed wheel on differential pinion Number of teeth (rotor)
2.24	-	43
2.47	-	39
2.65	2.65	36
3.46	3.46	28