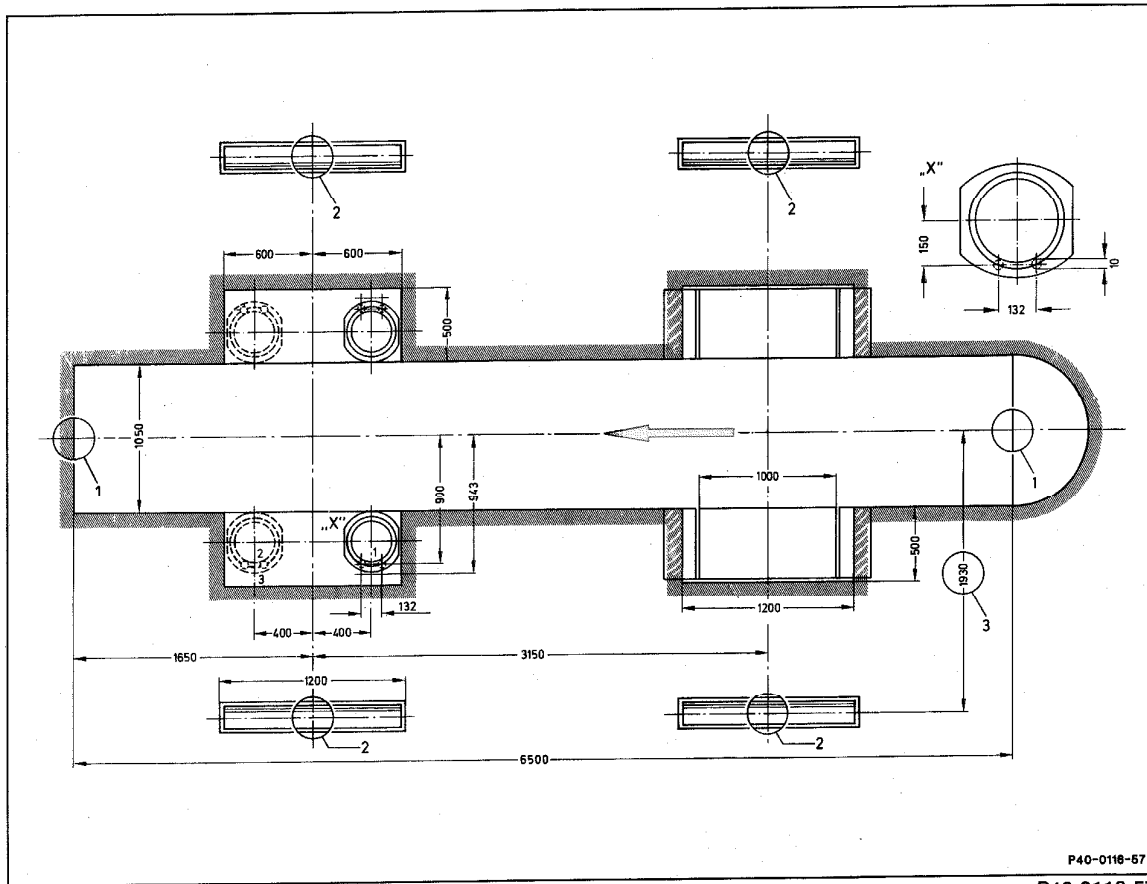


40-210 Positioning of wheels



P40-0116-57
P40-0116-57

1) Graduated scale for measuring wheel lock extended to $\pm 60^\circ$ Slide range 60 mm.

Measuring pit with four sliding projectors.

Layout of turntables for front wheels and sliding plates for rear wheels.

- 1 Center of pit
- 2 Installation frame center
- 3 For projectors distance pit - installation frame

Turntables and sliding plates	bring into appropriate position and secure against slippage, remove securing.
Vehicle	drive over measuring pit or onto hoist.
Brake pedal	depress with pedal winch 000 589 18 31 00.

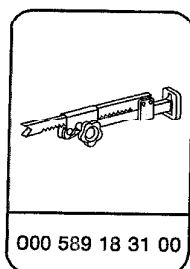
40-210 Positioning of wheels

Equipment

Measuring equipment	e.g. Bosch, 7000 Stuttgart Type EFAW 444
Turntable ¹⁾	e.g. Beissbarth, D-8000 München Order no. P11/59

¹⁾ Range $\pm 60^\circ$, slide range 60 mm.

Special tools



Position of turntables for attachment of front wheels

Vehicle version	Measuring range	Position of turntables for front wheels
Sedans (long and short) Coupés	Total measurement	3

Note

For chassis alignment checks, the front wheels must rest on turntables supported by ball bearings, the rear wheels on sliding plates supported by roller bearings. The use of shells for the front wheels is not permitted.

To prevent rolling movements of the front wheels, the pedal winch must be applied against the brake pedal (40-200).

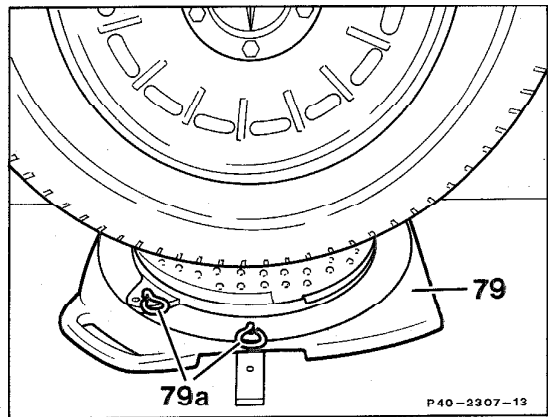
Positioning of front wheels

1 Secure base of each turntable (79) with two retaining pins (79a) on the floor against slipping off while driving vehicle onto turntables.

2 Prior to driving vehicle over measuring pit or onto hoist, or lowering vehicle, move respective turntable to correct retaining position:

Center position = location for positioning without subsequent lifting of vehicle when mounting quick-clamping holder for wheel mirror.

Inner position = location for lifting and lowering vehicle when using universal holders for wheel mirror.

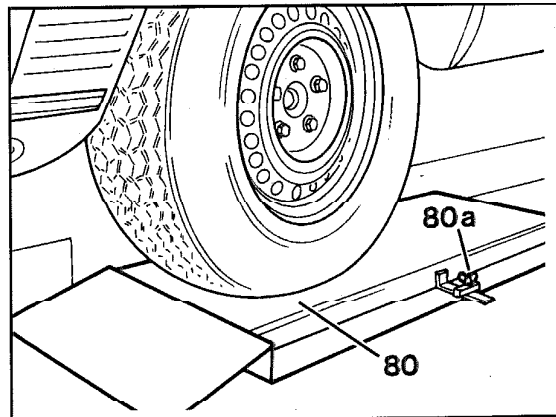


P40-2307-13

Positioning of rear wheels

1 Similar to the turntables of front wheels, the base of the sliding plates (80) for holding the rear wheels is secured by means of two pins each on floor against slipping off when positioning the vehicle.

2 The top of the sliding plates for the rear wheels, in unloaded condition and with locking device released, locates itself in inner portion of sliding range. For positioning and lowering of vehicle after centering of wheel mirror the tops need not be locked.



80 Sliding plate
80a Locking device

P40-2308-13

40-210 Positioning of wheels

Checking the turntables and sliding plates

Check turntables and plates for easy operation and for differences in height, if any. When checking with a hose leveling instrument, the difference in height of the turntables and plates in relation to each other should not exceed max. 1 mm.