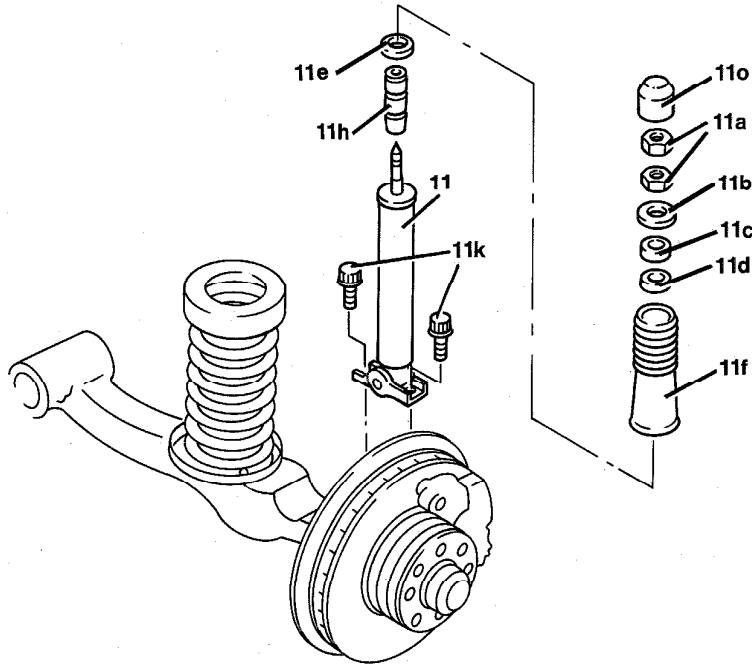


## 32-100 R and R front shock absorbers



P32-0075-37

P32-0075-37

Protective cap (11o) .....	remove, attach.
Hex. nuts (11a) .....	screw off, screw on. Tighten bottom hex. nut to 17 Nm, top hex. nut (counter nut) to 30 Nm. Hold piston rod with 5 mm open-end wrench.

**⚠ CAUTION!**

Do not allow piston rod to turn!

Plate (11b) and rubber ring (11c) .....	remove, install.
Vehicle .....	jack up, lower. Remove front wheel (wheel lug bolts 110 Nm).

## 32-100 R and R front shock absorbers

12-point bolts (11k) ..... screw out, screw in, replace, 20 Nm.  
Remove shock absorber (11).

Bottom rubber ring (11d),  
plastic protective sleeve (11f),  
bottom plate (11e)  
and auxiliary rubber spring or  
stop buffer (11h) ..... remove, install.

### Upper shock absorber mount

	Part no.	Height	Length	Outer dia.	Rubber hardness ° shore
Top and bottom rubber rings	180 326 01 68	19	-	40	57 ± 5
Plastic protective sleeve	126 323 00 38	4	199	-	-
Bottom plate	123 323 02 67	3,5	-	44	-
Auxiliary rubber ring (stop buffer)	126 323 00 44 <sup>1)</sup>	-	95	-	-
	115 323 06 44 <sup>2)</sup>		105		

<sup>1)</sup> Version up to approx. 8.88

<sup>2)</sup> Version as of approx. 9.88

### Note

The front shock absorbers serve simultaneously as the extension stop for the front wheels. For this reason, loosen shock absorber mount only when the vehicle is standing on the wheels or when the control arm is supported.

When the shock absorber is released, the upper control arm rests on the end stop on the front end.

To install upper suspension either place vehicle on wheels or lift axle half on lower control arm.

**Always replace self-locking bolts!**

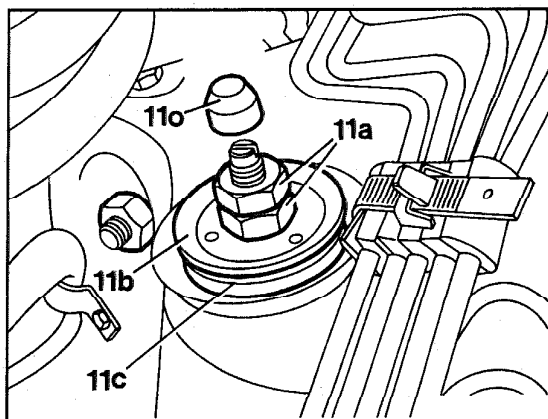
When damaged the shock absorbers can be replaced individually regardless of the brand. It is only necessary for the shock absorber version to coincide according to color code, e.g. 1 blue lengthwise stripe or 1 blue crosswise stripe.

### Removal

1 Remove protective cap (11o) on upper shock absorber mount and loosen hex. nuts (11a). Screw bottom hex. nut down. Remove plate (11b) and rubber ring (11c).

#### CAUTION!

When removing the shock absorber with the vehicle jacked up and load relieved on the axles half ensure that the piston rod does not turn while loosening the top mount. Since the extension stop in the shock absorber is against the operating piston in this state, the connection between the operating piston and piston rod could loosen. This would result in sudden extension of the piston rod and expulsion of the oil in the shock absorber.



P32-2252-13

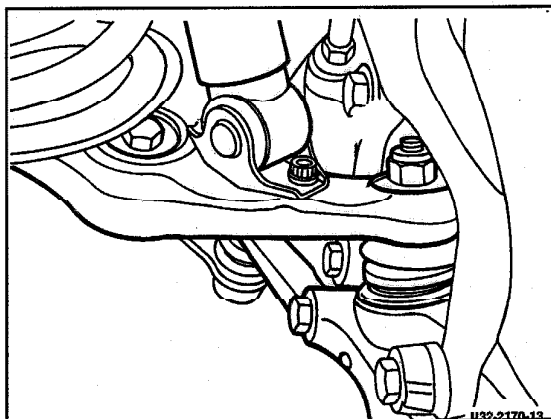
- 11a Hex. nut
- 11b Top plate
- 11c Rubber ring
- 11o Protective cap

2 Jack up vehicle. Remove front wheel.

3 Press shock absorber piston rod in and position shock absorber perpendicular to bottom control arm.

4 Loosen bottom shock absorber mount by screwing out 12-point bolts on bottom control arm.

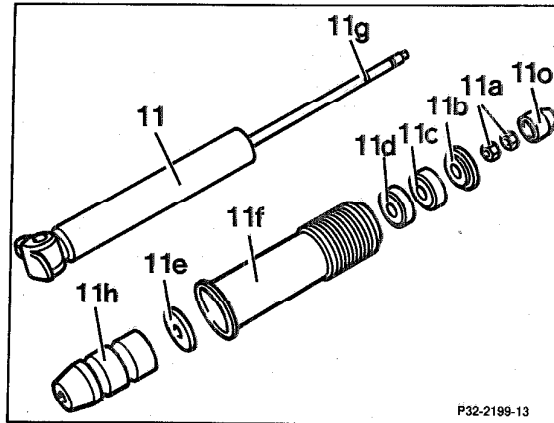
Remove shock absorber.



P32-2170-13

## 32-100 R and R front shock absorbers

5 Remove suspension parts: bottom rubber ring (11d), plastic protective sleeve (11f), bottom plate (11e) and auxiliary rubber spring or stop buffer (11h).



P32-2199-13

### Installation

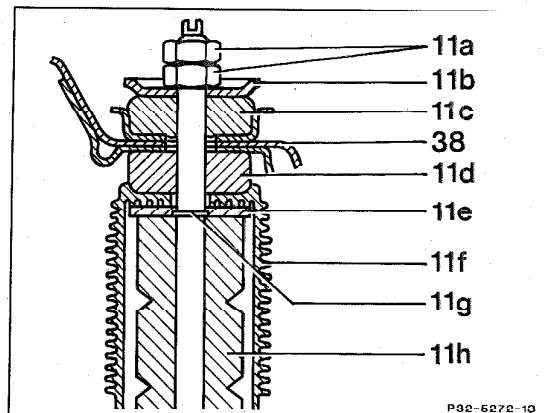
6 Check suspension parts, clean bottom control arm on contact surface for mounting bracket for bottom shock absorber mount.

### Note

The mounting bracket for the bottom shock absorber mount must always be seated tightly in the rubber bushing; it must not be possible to turn the rubber bushing in the suspension eye.

7 Slide suspension parts (11h, 11e, 11f and 11d) onto piston rod.

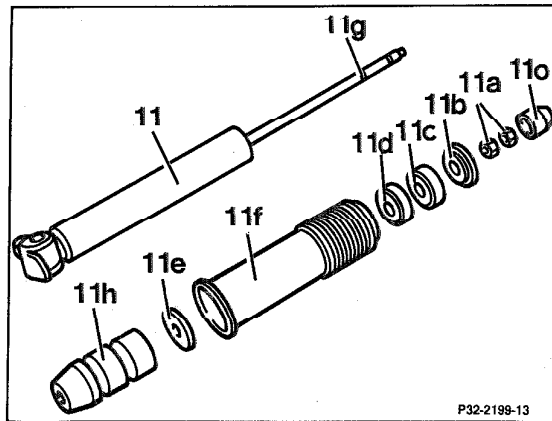
- 11a Hex. nuts
- 11b Top plate
- 11c Top rubber ring
- 11d Bottom rubber ring
- 11e Bottom plate
- 11f Plastic protective sleeve
- 11g Snap ring
- 11h Auxiliary rubber spring (stop buffer)
- 38 Front end



P32-5272-13

**Note**

During assembly ensure that the plastic protective sleeve (11f) is installed between the bottom plate (11e) and bottom rubber ring (11d). On sedans with standard suspension the auxiliary rubber spring or stop buffer (11h) has a length of 95 mm, on sedans with harder suspension (higher vehicle level) and on coupes the length is 105 mm. As of approx. 08.88 all vehicles have a stop buffer with length of 105 mm and natural color code.



P32-2199-13  
P32-2199-13

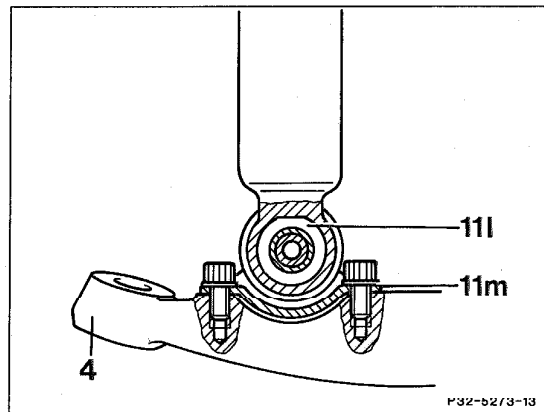
**⚠ CAUTION!**

Never mix up bottom plate (11e) and top plate (11b), otherwise the plate can slide over the snap ring (11g) while driving.

8 Mount shock absorber on bottom control arm (20 Nm) and insert into front end. Replace microencapsulated 12-point bolts.

9 Install front wheel (wheel lug nuts 110 Nm).

10 Lower vehicle and install upper shock absorber mount. Tighten bottom hex. nut to 17 Nm, top hex. nut (counter nut) to 30 Nm. Hold piston rod with 5 mm open-end wrench.



P32-5273-13  
P32-5273-13

**Note**

Center the piston rod in the hole in the body while lowering the vehicle.

**⚠ CAUTION!**

Do not allow piston rod to turn (see Note, item 1).

**Bottom mount**

- 4 Bottom control arm
- 11l Rubber bushing
- 11m Mounting bracket