



2013

---

*CLS-CLASS*

---



Mercedes-Benz

# *IF PASSION HAD A PATENT*



CLS 63 AMG shown above with Steel Grey metallic paint and optional carbon fiber rear spoiler, PARKTRONIC, and AMG Performance and Premium 1 Packages.  
CLS 550 shown at right with Black paint, and optional Driver Assistance and Premium 1 Packages, and Wheel Package Plus One.

If Mercedes-Benz had invented nothing else since Carl Benz earned the patent for the first car, the world would still be propelled by his own personal drive. But as over a century and a quarter has proven, it was only the beginning. Some 80,000 patents later, it's clear that Mercedes-Benz has never stopped reinventing the car. And yet the ongoing stream of innovations does not define the brand nearly as much as the singular passion behind them. When the CLS-Class first captured the emotion of a 4-passenger coupe in a bold new expression of a 4-door body, it did more than invent a new category of automobile. In one brilliant sweep, it literally changed the shape of an industry. And while other automakers have attempted to duplicate its sweeping form, they cannot replicate the passion that created the world's first 4-door coupe, or the pedigree that traces to the world's first car.

[MBUSA.com/CLS](http://MBUSA.com/CLS)





## *IN HONOR OF ITS HERITAGE, IT STARTED SOMETHING NEW.*

For most automakers, the decision to uphold tradition or break free from it is a fork in the road. For Mercedes-Benz, these two paths are simply inseparable. Trendsetting breakthroughs are at the very core of its enduring legacy. As with every Mercedes-Benz coupe, the CLS-Class is sleek of line, fleet of foot, and crafted to coddle its four fortunate occupants in impeccable luxury. And yet it uniquely welcomes each of them through their own door. A biturbo V-8 and advanced 7-speed automatic transmission impart a feeling of owning the road, without forgetting that we only borrow the earth. Adaptive air suspension unites sharp response with silky refinement, for handling that's vividly animated without ever feeling agitated. With its groundbreaking design, the CLS-Class has changed the course of history for 4-door automobiles. And with its breathtaking performance, it makes every drive a dramatic departure from ordinary coupes.

**CLS 550 Coupe.** With the free-flowing power and torque of a 402-hp Direct Injection biturbo V-8, the CLS 550 can rush from 0 to 60 mph in just 5.1 seconds<sup>1</sup> yet return 25 highway mpg.<sup>2</sup> Sporty paddle shifters offer fingertip control of the 7-speed automatic, while the semi-active AIRMATIC air suspension and 18" wheels<sup>4</sup> keep pace with grace. Optional 4MATIC™ all-wheel drive<sup>3</sup> enhances handling on any road, in any season. Its lightweight design delivers 0-60 in 5.2 seconds with the same 25 highway mpg.

**CLS 63 AMG Coupe.** A handcrafted biturbo V-8 unleashes 518 hp, for a pavement-trembling 0-60 sprint of only 4.4 seconds.<sup>1</sup> Yet no less startling are its earth-friendlier virtues, like an ECO Start/Stop system and 25-mpg highway estimate.<sup>2</sup> Its 7-speed AMG SPEEDSHIFT MCT multi-clutch transmission lets the driver select any of four modes, while its AMG-calibrated steel-spring front/AIRMATIC rear suspension offers two. Flow-formed or optional forged-alloy 19" AMG wheels<sup>4</sup> help reduce unsprung weight.

CLS 550 shown with Iridium Silver metallic paint, and optional PARKTRONIC, and Driver Assistance and Premium 1 Packages. Please see endnotes at back of brochure.





# LUMINOSITY

*LIGHT AND SHADOW MAY DRAW THE EYE TO ITS SURFACE,  
BUT THE BRIGHTEST ILLUMINATION COMES FROM WITHIN.*

The rare automobiles that go on to be prized by collectors, displayed in modern art museums, or simply treasured in the marketplace, all begin with the spark of a new idea. Piercing headlamps, muscular fenders and the tautly drawn arch of its roofline present the iconic grille of the CLS-Class in a decidedly avant-garde context. An elegant analog timepiece crowns a stunningly high-tech cockpit. And from its advanced LED lighting to its available infrared night vision system, it is a showcase of technology that illuminates the road ahead, and a pathway to the future. The enduring beauty of a Mercedes-Benz always radiates from the unequaled depth of its engineering. But even before the laboratories, wind tunnels, crash-test halls and extreme climates took their turns in shaping the CLS-Class, its design came to light not merely from the need to transport people quickly, safely and comfortably. But from a desire to move them deeply.

**Beaming.** Innovative use of light-emitting diode (LED) technology floods the road with brilliant illumination while setting the interior aglow. The CLS-Class is the first car ever to offer full-LED active headlamps, along with its brake, tail and Daytime Running Lamps, and the turn signals at the front, rear, and in the side mirrors. Fiber-optic LED ambient lighting sets the stylish cabin aglow in a choice of three selectable colors.

**Streaming.** Advanced aerodynamic refinement enhances efficiency and handling, while hushing wind noise, even with frameless door glass, and helping keep the windows cleaner on rainy days.

**Gleaming.** Seductively sculpted sheet metal is at once muscular and graceful. The classic, wide grille with a proud central Star is subtly reflected in the mesh air intakes below. The visual thrust of the hood flows into the sleek side profile with a continuous sweep from headlamp to taillamp.

**Dreaming.** Unimaginably advanced technology feels at home with time-honored craftsmanship. Four individually sculpted seats are hand-fitted in precisely top-stitched leather. Hand-polished wood trim adorns the doors, dash and sweeping full-length console. A classic analog clock pays tribute to the elegant 300 S Coupe of the 1950s.

CLS 550 shown with Indium Grey metallic paint, and optional PARKTRONIC, and Driver Assistance and Premium 1 Packages.









# WHERE SPARKS LEARN TO FLY

Gasoline, oxygen and ignition are the core elements of combustion. In the CLS-Class, innovation is the fuel, and imagination fills the air. What ignites them is a passion for performance that's not just about forward thrust but forward thinking—to meet the demands of enthusiasts as well as the environment. The advanced Direct Injection V-8s in the CLS-Class deliver more power and quicker response from less fuel, with fewer emissions. Twin turbochargers spin up to 185,000 rpm, boosting low-end torque by as much as 45%. Rapid-multispark ignition fires up to four times in a millisecond, while high-pressure Direct Injection manages the fuel flow with microscopic precision. The semi-active AIRMATIC suspension also turns pressurized air into unstressed performance. Its adaptive damping responds to every move, in the moment, to balance quick reflexes with quiet refinement. Whether winding out to redline or unraveling a twisting back road, a CLS-Class doesn't just spark your passion for driving. It keeps the fire burning.

**Energized.** Advanced biturbo Direct Injection V-8 engines use innovative technology to create breathtaking power output with less fuel intake. The CLS 550 rouses 402 hp and 443 lb-ft from 4.6 liters of displacement. A versatile 7-speed automatic with an electronic selector and paddle shifters allows complete control of gear changes without taking a hand from the steering wheel. The CLS 63 AMG unbridles 518 hp and 516 lb-ft from its handcrafted 5.5-liter V-8, and reins them in via a paddle-shifted 7-speed multi-clutch AMG SPEEDSHIFT MCT transmission.

**Enhanced.** Optional 4MATIC™ all-wheel drive raises the handling confidence of the CLS 550 in any season. Its 4-wheel Electronic Traction System (4-ETS) continually redistributes the engine's power to the wheels with the best grip—even if that's a single wheel.<sup>3</sup> The system adds only 100 lbs, which helps to preserve the car's admirable fuel economy and the natural balance. And since torque is permanently split 45:55 front/rear, 4MATIC is as rewarding in dry corners as it is reassuring in rain and snow.

**Enthused.** Staggered-width wheels help the rear tires convert traction into acceleration without sacrificing the crisp steering feedback from the front end. So on every CLS-Class, the rear wheels and tires are sized 1" wider. Choose any of four 5-spoke designs for the CLS 550: standard 18" or optional 19" alloys, and 18" or 19" AMG wheels in the two optional Wheel Packages.<sup>4</sup> The CLS 63 AMG wears standard 19" AMG triple 5-spoke wheels or optional lightweight forged-alloy 19" AMG 5-spoke wheels.

**Enlivened.** AIRMATIC suspension teams air springs with our Adaptive Damping System on the CLS 550. ADS instantly adjusts each shock absorber every time a wheel changes direction, up or down. Standard 4-wheel level control also draws the car closer to the road at higher speeds—helping to reduce drag and enhance stability. Efficient electromechanical power steering collaborates with our innovative Direct-steer system to deliver quicker response in corners, easier maneuvering at low speeds, precise on-center feel and greater straight-line stability.

CLS 550 shown with optional Diamond White metallic paint, PARKTRONIC, Driver Assistance and Premium 1 Packages, and Wheel Package Plus One. Please see endnotes at back of brochure.

# WHEN FORESIGHT AND FORTITUDE ARE WHAT MATTERS MOST

Look at the list of the safety features in most any car today, and you'll be looking into the history of Mercedes-Benz. That's because our engineers have been leading the way in safety for more than 60 years, with the first crumple zone among the many thousands of patents they have earned. Since then, they've pioneered a portfolio of safety breakthroughs that have gone on to become industry standards—such as the Antilock Braking System (ABS), Electronic Stability Program (ESP®) and emergency-sensing Brake Assist. Far beyond these safety milestones, the 2013 CLS-Class offers first-of-their-kind innovations that predict tomorrow's cars, while helping protect your own tomorrow. PRE-SAFE® can help prepare for a collision before it happens. ATTENTION ASSIST can sense a drowsy driver. On rainy highways, the brakes act to disperse water buildup. And should any of the 10 air bags deploy, the standard mbrace® system can automatically place a call for help.<sup>5</sup> Every CLS-Class is an orchestrated safety system—engineered to make the most of the precious seconds it takes to avoid, or survive, a collision. Looking into the future is one way Mercedes-Benz looks out for yours.

## REVEAL

**Brighter lighting.** The world's first full-LED active headlamps, part of the Premium 1 Package, generate light that's even closer to natural daylight than the standard Bi-Xenon lamps. Active Curve Illumination and Adaptive Highbeam Assist continuously vary the beam pattern of the LED headlamps, to maximize illumination of corners and straightaways without creating glare for other drivers. LED Daytime Running Lamps and LED taillamps are standard equipment.

**ATTENTION ASSIST.** By continually monitoring a variety of driving behaviors, this innovation can alert the driver if it detects signs of drowsiness on long trips. More than 70 variables are measured in the first minutes of each drive, to establish a pattern and determine the warning thresholds accordingly.<sup>6</sup>

**Night View Assist PLUS with Pedestrian Detection.** When driving in darkness, this remarkable option projects infrared beams that are invisible to the eye, and then reads them with a special camera. The system displays a clearer, supplemental real-time view of the road ahead on the large screen that's positioned high in the dash. It can also help identify and point out pedestrians along a dark roadway.<sup>7</sup>

**Rear view camera.** For added safety when backing up, this option shows a live view of the area behind your CLS-Class on the large central in-dash screen.<sup>8</sup>

## PREPARE

**PRE-SAFE.** A Mercedes-Benz first, PRE-SAFE can help detect instability during certain vehicle maneuvers that suggest that a collision or rollover is imminent. It can then tighten the front seat belts, adjust the front passenger seat, and close the windows and sunroof—all in an effort to better prepare the occupants and restraint systems in the moments before a collision.<sup>9</sup>

**Accident avoidance.** Two safety systems pioneered by Mercedes-Benz help you avoid potential collisions. The Electronic Stability Program (ESP) monitors the car's response to driving inputs such as steering and braking, and responds when needed to help keep the car on course.<sup>3</sup> Brake Assist can maximize braking pressure if it detects an emergency braking situation, potentially shortening your overall stopping distance.<sup>10</sup>

**Adaptive braking.** The 4-wheel disc brakes integrate technology to help make driving more reassuring and relaxing in a variety of situations. If the driver lifts off the accelerator quickly, Predictive Brake Priming sets the pads closer to the discs for quicker response when the driver steps on the brakes. In the rain, Automatic Brake Drying periodically applies the brakes just enough to sweep away water buildup on the discs. During uphill starts, Hill-Start Assist helps to prevent unwanted rollback. And a HOLD feature can help to make driving in stop-and-go traffic less stressful.<sup>10</sup>

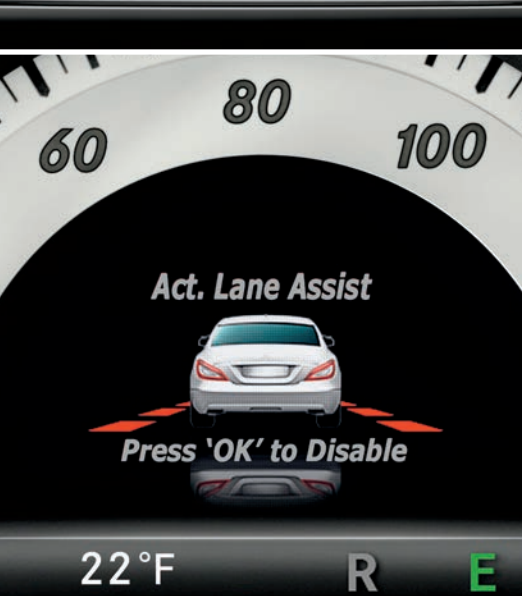
## REACT

**DISTRONIC PLUS.** This optional radar-based cruise control system, another Mercedes-Benz innovation, adapts your set speed in response to the flow of traffic ahead—automatically slowing until your path is clear again. If the vehicle ahead slows to a stop, DISTRONIC PLUS can also brake to a full halt, then resume automatically when traffic starts going.<sup>11</sup>

**PRE-SAFE Brake.** DISTRONIC PLUS can also help to detect an impending collision with a vehicle ahead. Even if you're not using the cruise control, PRE-SAFE Brake can automatically apply up to 100% of the car's braking force to help reduce the severity of impact.<sup>10</sup>

**Ten air bags.** A suite of 10 standard air bags offers 12-way protection.<sup>12</sup> Driver and front-passenger knee air bags augment dual-stage front air bags. Pelvic air bags complement side-impact air bags for each front seat. And side curtain air bags are provided at all four seating positions. In a rear impact, NECK-PRO active front head restraints help to reduce whiplash.

**Blind Spot Assist and Lane Keeping Assist.** These optional systems can alert you to some unseen vehicles in the adjacent lane,<sup>13</sup> and can warn you of unintended drifting across visible lane markings.<sup>5</sup> Both systems are also available with advanced active technology that can help guide the car back into its own lane if the driver disregards the alerts.





CLS 550 shown with Storm Red metallic paint, and optional 4MATIC all-wheel drive, Night View Assist PLUS, PARKTRONIC, and Driver Assistance and Premium 1 Packages. Please see endnotes at back of brochure.



# IN SYNC WITH YOUR SENSES

The cockpit of the CLS-Class is designed to make the driver feel not merely welcome but thoroughly connected. Controls are logically placed, intuitive in operation, and rewarding in feel. Crisp instruments and vivid displays are all at the same height, for a quick read that helps keep your focus on the road. And advanced technology brings a world of entertainment and information as close as your fingertips, or even your voice. An elegant central controller and high-resolution 7" screen<sup>14</sup> offer easy access to audio, navigation and vehicle settings, along with new Cloud-based in-car Internet features available with the Mercedes-Benz mbrace2™ system.<sup>5</sup> Standard Bluetooth® provides hands-free calling and wireless music streaming.<sup>15</sup> And innovative options serve as silent valets—starting the engine with a touch, or sizing up a parking space as you drive by, then actively steering you in. The CLS-Class is engineered to indulge your senses and fulfill your wishes. Often before you even ask.

**At your fingertips.** The COMAND system unifies a world of entertainment, navigation and information. It's all easily accessible via a convenient central controller, a multifunction steering wheel, and two color screens: one in the center dash, and one in the speedometer.

**All around you.** A 14-speaker harman/kardon LOGIC7® system outputs 610 watts of Dolby® Digital 5.1 surround sound. Listening choices are virtually limitless. There's an in-dash DVD/CD player, HD Radio™ stations, SiriusXM Radio with six months of service,<sup>16</sup> an SD card reader, plus Bluetooth audio streaming, an AUX input and a USB port. A 10GB Music Register lets you store your own digital music on the in-dash hard drive. iPod® integration is also available.<sup>17</sup> Standard navigation<sup>18</sup> features a fast 80GB hard drive, 3D maps with building profiles, as well as Zagat® Survey ratings for restaurants, hotels and golf courses, plus SiriusXM Traffic with dynamic re-routing and SiriusXM Weather.

**At your service.** With the optional Premium 1 Package, a suite of conveniences help speed your departure and arrival. KEYLESS-GO lets you unlock and drive your CLS-Class without ever taking the key from your pocket. And an electronic trunk closer can fully open or close the trunklid at the touch of a button, to ease luggage-loading even when your arms are full.

**In the zone.** Optional PARKTRONIC can alert you to nearby obstacles while you negotiate tight spaces. Its Active Parking Assist surveys parallel-parking spots as you drive by, sizing each one up and letting you know which one's a good fit. Then, when you're ready to back into a space, the system expertly handles the steering while you simply manage the pedals.

CLS 550 shown with Almond/Mocha leather, Burl Walnut wood trim, and optional PARKTRONIC, wood/leather steering wheel and Premium 1 Package. Please see endnotes at back of brochure.





---

# TO THE NTH DEGREE AND THE LAST DETAIL

---

Two elements define the unique character of a Mercedes-Benz coupe: A graceful confidence in its stride, and an exquisitely detailed 4-passenger cabin. Even on an unfamiliar road, the CLS-Class feels unruffled, unstressed and at ease—and it strives to make its passengers feel the same way. With a flourish of hand-polished wood and impeccable top-stitching, a full-length console affords each occupant an individual comfort zone. Every seat is hand-fitted in supple leather, and tailored to embrace its sole occupant. And while the timeless craftsmanship appeals to your senses, advanced amenities attend to your well-being. Dual-zone climate control monitors humidity, sunlight and incoming air quality. The digital surround sound system reshapes the spectrum of its output to adapt to subtle changes in ambient noise. And as dusk falls, the glow of fiber-optic LED lighting encircles the cabin in a choice of three hues—for a soothing sense of belonging, even in the dark.

**Memorable.** Front seats power-adjust 14 ways—including 4-way lumbar supports. The 3-position memory recalls your favorite settings, including the power steering column and side mirror positions for the driver. With the Premium 1 Package, heated and Active Ventilated add to your comfort in any season. An optional active multicontour driver seat lets you fine-tune the lumbar, shoulder and thigh supports. It'll also add lateral support in cornering maneuvers, and offer you an invigorating massage.

**Versatile.** In the generous rear cabin, a pair of individually contoured seats flank a center console that provides a folding armrest, dual cupholders, covered storage and twin air vents. Optional split-folding seatbacks (standard on the CLS 63 AMG) let you expand the cargo area anytime you need to.

**Tactile.** With its supple Premium leather trim and prominent thumb grips, the 3-spoke multifunction steering wheel blends luxury and control. Optional heating adds winter comfort, or you can add the visual warmth of polished wood trim. The optional Wheel Packages add perforated leather side grips and a performance-oriented flat-bottom design.<sup>19</sup>

**Individual.** Expert tailoring to your exquisite taste is a CLS-Class tradition. Supple, richly grained leather—or the indulgent option of smooth, extra-soft Premium leather—is complemented by hand-finished wood trim. The CLS 550 offers a choice of warm Burl Walnut or dramatic Black Ash, while CLS 63 AMG adds two more exotic finishes: the seemingly endless depth of Piano Black Lacquer, or the race-bred excitement of genuine carbon fiber.

CLS 550 shown with optional Black Premium leather, Black Ash wood trim, and optional active multicontour driver seat and Premium 1 Package. Please see endnotes at back of brochure.





# *ONE MAN, ONE ENGINE. PERFORMANCE ART, SIGNED BY THE ARTIST.*

---

The heart of a CLS 63 AMG is its engine—a work of modern art crafted by the hands of its own master engine builder, and crowned by a plaque bearing his signature. The soul of AMG traces to an old German mill in 1967, where two former Mercedes-Benz engineers set out to handcraft champion racecars. Success on the track led them to apply their performance pedigree and “One man, one engine” principle to streetgoing Mercedes-Benz models. Decades later, virtually every facet of design and development—from transmissions, suspensions and brakes to the distinctive cockpit appointments—remains a seamless alignment of hands-on experience and high-performance engineering. The result is an automobile that can uniquely satisfy both the highest demands of driving and the deepest desires of its driver.

**Learn more at [MBUSA.com/AMG](http://MBUSA.com/AMG)**



CLS 63 AMG shown with Palladium Silver metallic paint, and optional carbon fiber rear spoiler, PARKTRONIC, and AMG Performance, Driver Assistance and Premium 1 Packages. Please see endnotes at back of brochure.





DRIVING PERFORMANCE

**The CLS 63 AMG Coupe.** A handcrafted 5.5-liter Direct Injection biturbo V-8 delivers 518 hp and 0–60 mph in a mere 4.4 seconds.<sup>1</sup> Light weight, low friction and a fuel-saving ECO Start/Stop system result in ultralow emissions and surprising efficiency—up to 25 mpg on the highway.<sup>2</sup> The 7-speed AMG SPEEDSHIFT MCT transmission incorporates a wet startup clutch and a paddle-shifted Manual mode that can change gears in just 100 milliseconds. The console's AMG DRIVE UNIT offers four selectable setups for the transmission, multi-mode suspension and 3-stage ESP<sup>®</sup>—including a driver-customized program that engages via a single button.

**Competition-bred chassis.** Staggered 19" AMG triple 5-spoke wheels<sup>4</sup> offer an enticing peek at the massive, multi-piston AMG brakes. Even lighter forged-alloy 19" AMG twin 5-spoke wheels are a racy option.

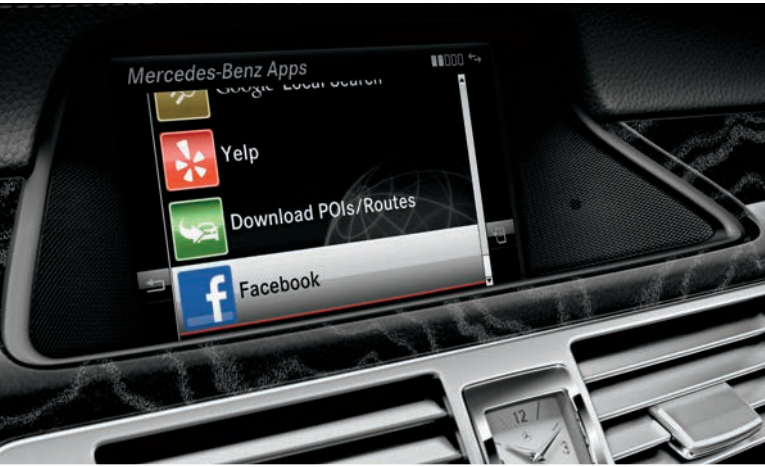
**AMG Performance Package.** Strategic enhancement of key engine components raises the stakes to 550 hp, 590 lb-ft and a 186-mph top speed.<sup>20</sup> A sport-tuned suspension, red brake calipers, a performance steering wheel with DINAMICA side grips, and a genuine carbon fiber engine cover emphasize the racing pedigree of this rare thoroughbred.



CLS 63 AMG shown with Black Premium leather, and optional carbon fiber trim and Premium 1 Package.

# YOUR WORLD, YOUR WAY.

*IT'S MORE THAN YOUR CAR.  
IT'S YOUR LIFE, ON THE GO.*



Where will you go next? Whether you're meeting friends, picking up the kids, or just out and about, Mercedes-Benz mbrace<sup>®</sup> can make any trip easier, more productive and more enjoyable. The new mbrace2<sup>™</sup> connects you and your car with the devices you already rely upon to get around—your smartphone and computer. It also brings the Internet and useful new apps to your car, so you can use familiar services like Google Maps<sup>™</sup> and Yelp to start navigating with just a few clicks. Friends can send their location to your car with just a text message. You can lock your car's doors, flash its lights, or find it in a parking lot—all from your smartphone. When your teenager takes the wheel, mbrace2 can deliver peace of mind via your computer. It can bring the assistance of live experts right to your car—from last-minute theater tickets to help in an emergency. And it can all be updated remotely, over the air. So wherever the world goes, mbrace will keep making it yours.



**From your car.** With new Cloud-based apps, mbrace2 brings the Internet into your Mercedes-Benz. Using the standard COMAND system, you can find friends from their Facebook check-ins, search for restaurants on Yelp, or use Google Maps, Local Search and Street View. Instead of entering an address, you can start navigating with just a few clicks. And three buttons in your car can connect you to emergency services, our 24-hour Customer Assistance Center, our Roadside Assistance, or our mbrace PLUS Concierge.<sup>21</sup>



**From your smartphone.** The mbrace Mobile Application for iPhone<sup>®</sup> and Android<sup>™</sup> phones lets you send addresses directly to your navigation system, locate your car, lock or unlock its doors, flash its lights, or monitor it when you valet-park. With just a touch, you can find a dealer, and contact Roadside Assistance, Concierge services or Mercedes-Benz Financial Services. And Drive2Friend<sup>™</sup> lets someone send their location directly to your navigation system, simply by responding to a text message that you send them.<sup>22</sup>



**From your computer.** You can send addresses—or even exact routes—to your car's navigation system in a number of ways: From the Send2Benz<sup>™</sup> website. From Google Maps, via Search & Send<sup>™</sup> and Route2Benz. And with a browser toolbar widget that lets you highlight any address on your screen and send it with just two clicks. For added peace of mind when your kids use the car, mbrace can alert you if they drive faster, farther or later than you prefer. Your car can even send a monthly Vehicle Health Report on its service needs, right to your email inbox. And you'll find a world of support at the mbrace website, accessible through [MBUSA.com/mbrace](http://MBUSA.com/mbrace).

# mbrace2

## mbrace Package

6-month trial included

Advanced features you'll enjoy every day.  
Support you can count on when you need it most.

### SAFETY AND SECURITY

From Roadside Assistance to antitheft measures to emergency aid, mbrace looks after you, your passengers and your Mercedes-Benz.

- ▶ Call for assistance after an accident or in any emergency situation. If an air bag is activated, your Mercedes-Benz can place an SOS call automatically, even if you can't
- ▶ Directly connect with Mercedes-Benz Roadside Assistance for a jump-start, to change a flat tire or other car trouble
- ▶ Get notified if your car's alarm is set off, and let your car's built-in GPS help authorities with stolen vehicle recovery
- ▶ If you ever find yourself unable to drive, let an mbrace specialist help arrange alternate transportation home

### REMOTE CONNECTIONS TO YOUR VEHICLE

Interact with your vehicle's features, and send addresses to its navigation system, from your iPhone, Android or computer.

- ▶ Send destinations and even exact routes to your COMAND navigation system from your computer or smartphone
- ▶ Locate your vehicle from the Mobile App on your phone when you can't remember where you parked
- ▶ Remote-lock and unlock your car's doors
- m2** ▶ Sound your car's horn and flash its lights to help spot it in a crowded lot, or to call attention to a hazardous situation
- m2** ▶ Receive a monthly email health report from your car, so you can check under the hood without opening the garage (available starting late 2012)

## mbrace PLUS

3-month trial included

Personal assistance to make your life easier.  
Helpful ways to look after your loved ones.

### PERSONAL CONCIERGE

Enjoy virtually unlimited assistance from an actual person with the knowledge and resources to help with almost any request.

- ▶ Let an expert Concierge help you stay more productive on the road, or from the Mobile App on your smartphone
- ▶ Get expert recommendations and reservations for dining out, tickets to events, and answers to most any question

### FAMILY DRIVER MONITORING **m2**

Let mbrace add to your peace of mind when the secondary drivers in your household use the family Mercedes-Benz.

- ▶ Set speed limits and receive reports if they're exceeded
- ▶ Set up virtual boundaries and be alerted if they're crossed
- ▶ Receive an alert if the car is started after curfew (available starting late 2012)
- ▶ See where your vehicle's been driven on an online map

### ADVANCED TRAVEL ASSISTANCE

Keep your eyes on the road with agent-assisted route guidance based on where you are, or plan a trip to somewhere far away.

- ▶ Receive spoken assistance in your car with weather and traffic conditions, point of interest information, and turn-by-turn driving directions to your destination
- ▶ Let your Concierge book and change airline, hotel and rental car reservations from your car or the Mobile App

## Mercedes-Benz Apps

3-month trial included

The convenience of the Internet in your car.  
Connections to your friends and favorites.

### IN-VEHICLE INTERNET **m2**

Access in-car Internet-based connections to the interests you enjoy, the information you need, and the world you call your own.

- ▶ Search restaurant and business reviews with Yelp, and navigate directly to them with just a few clicks
- ▶ Stay connected to friends with Facebook, and navigate directly to places where they've checked in
- ▶ Find and view local points of interest through Google™ Local Search, Street View and Panoramio
- ▶ Keep up-to-date on the latest news from around the world
- ▶ Follow your favorite stocks through Morningstar (available starting late 2012)
- ▶ Enjoy an ever-expanding variety of new apps

**m2** New feature with mbrace2

For more information and a complete list of mbrace services, visit [MBUSA.com/mbrace](http://MBUSA.com/mbrace)

# MAKE IT YOURS.

Genuine Mercedes-Benz Accessories help you make your coupe the perfect expression of your personal style. A wide selection of accessories lets you enhance your vehicle's appearance, expand its versatility, or offer it some extra protection in everyday use. From alloy wheels to cargo innovations to state-of-the-art multimedia systems, they're all exclusively engineered to fit your car as well as they fit your life. It's a great way to make your CLS-Class unmistakably yours while keeping it genuinely Mercedes-Benz.

See the entire accessory selection at [MBUSA.com/CLS](http://MBUSA.com/CLS)

**Rear Seat Entertainment system.** Offer front-row entertainment to your rear-seat passengers. Dual 7" monitors behind each front head restraint can play separate DVDs or attach external devices via USB and SD card slots. They can also play the same movie on both screens. Two pairs of wireless headsets and a wireless remote are included to maximize passenger enjoyment while minimizing driver distraction.

**All-season floor mats.** Precisely contoured to fit the footwells of your CLS-Class in place of the standard mats, the honeycomb texture helps to keep water, mud and slush away from your carpets. Easy to remove and clean, they're available as a set of four in Beige, Black or Grey.

**Illuminated door sills.** Elegant, eye-catching brushed stainless-steel door sills are available in a set of two for the front doors, or as a set of four for all the doors. The front sills welcome you with a soft white luminescent Mercedes-Benz logo when you open the door.

**Rear spoiler.** Aerodynamically contoured to accentuate the bold lines of the CLS-Class, the rear spoiler is designed for secure attachment without drilling and a perfect fit with the sculpted lines of the trunklid.

**19" 10-spoke wheels.** Add to your car's poise and performance without compromising its engineering precision. With a lustrous Black/Polished finish, these strong yet lightweight 10-spoke wheels are sized 8.5x19" front and 9.5x19" rear, to fit 255/35 front and 285/30 rear tires.<sup>4</sup>



# BUILD YOUR OWN.

MBUSA.com/CLS

## OPTION PACKAGES

	CLS 550	CLS 63 AMG
<b>Premium 1 Package</b>	<input type="radio"/>	<input type="radio"/>
<ul style="list-style-type: none"> <li>• Full-LED headlamps with Active Curve Illumination and Adaptive Highbeam Assist</li> <li>• Heated and Active Ventilated front seats</li> <li>• Active multicontour driver seat (CLS 63 AMG only)</li> <li>• iPod®/MP3 media interface<sup>17</sup> (standard on CLS 63 AMG)</li> <li>• Rear view camera<sup>8</sup></li> <li>• KEYLESS-GO</li> <li>• Electronic trunk closer</li> <li>• Power rear-window sunshade (standard on CLS 63 AMG)</li> </ul>		
<b>Lane Tracking Package</b>	<input type="radio"/>	<input type="radio"/>
<ul style="list-style-type: none"> <li>• Blind Spot Assist<sup>13</sup> and Lane Keeping Assist<sup>6</sup></li> </ul>		
<b>Driver Assistance Package</b>	<input type="radio"/>	<input type="radio"/>
<ul style="list-style-type: none"> <li>• DISTRONIC PLUS with PRE-SAFE® Brake<sup>11</sup></li> <li>• Active Blind Spot Assist<sup>13</sup> and Active Lane Keeping Assist<sup>6</sup></li> </ul>		
<b>Wheel Package</b>	<input type="radio"/>	<input type="radio"/>
<ul style="list-style-type: none"> <li>• 18" AMG 5-spoke wheels with all-season tires<sup>4</sup></li> <li>• 3-spoke sport steering wheel<sup>19</sup></li> <li>• Manual mode for transmission</li> </ul>		
<b>Wheel Package Plus One</b>	<input type="radio"/>	<input type="radio"/>
<ul style="list-style-type: none"> <li>• 19" AMG 5-spoke wheels with high-performance tires<sup>4</sup></li> <li>• 3-spoke sport steering wheel<sup>19</sup></li> <li>• Manual mode for transmission</li> </ul>		
<b>AMG Performance Package</b>	<input type="radio"/>	<input type="radio"/>
<ul style="list-style-type: none"> <li>• Increased engine output (550 hp, 590 lb-ft torque)</li> <li>• Raised top speed<sup>20</sup></li> <li>• AMG sport suspension</li> <li>• Red brake calipers</li> <li>• AMG performance steering wheel with DINAMICA side grips</li> <li>• Carbon fiber engine cover</li> </ul>		

## SPECIFICATIONS

	CLS 550	CLS 63 AMG
<b>Engine</b>	4.6-liter biturbo Direct Injection V-8 402 hp @ 5,000 rpm 443 lb-ft net torque @ 1,600-4,750 rpm	Handcrafted 5.5-liter biturbo Direct Injection AMG V-8 518 hp @ 5,250-5,750 rpm 516 lb-ft net torque @ 1,750-5,000 rpm
<b>Transmission</b>	7-speed automatic with paddle shifters	7-speed AMG SPEEDSHIFT MCT with paddle shifters
<b>Wheels</b>	Staggered-width 18" 5-spoke <sup>4</sup>	Staggered-width 19" AMG triple 5-spoke <sup>4</sup>
<b>Suspension</b>	AIRMATIC with Adaptive Damping System and 4-wheel level control	AMG RIDE CONTROL with three modes and rear level control
<b>Drivetrain</b>	Rear-wheel drive or 4MATIC™ all-wheel drive	Rear-wheel drive

## INDIVIDUAL OPTIONS

	CLS 550	CLS 63 AMG
4MATIC™ all-wheel drive	<input type="radio"/>	<input type="radio"/>
PARKTRONIC with Active Parking Assist	<input type="radio"/>	<input type="radio"/>
Limited-slip differential	<input type="radio"/>	<input type="radio"/>
AMG Carbon Ceramic Braking System <sup>23</sup>	<input type="radio"/>	<input type="radio"/>
Night View Assist PLUS <sup>7</sup> (requires Premium 1 Package)	<input type="radio"/>	<input type="radio"/>
Active multicontour driver seat with massage feature (requires Premium 1 Package on CLS 550)	<input type="radio"/>	<input type="radio"/>
Split-folding rear seats	<input type="radio"/>	<input checked="" type="radio"/>
Heated steering wheel <sup>19</sup>	<input type="radio"/>	<input type="radio"/>
Wood/leather steering wheel <sup>19</sup>	<input type="radio"/>	<input type="radio"/>
Carbon fiber rear spoiler (requires AMG Performance Package)	<input type="radio"/>	<input type="radio"/>
Rear side-impact air bags <sup>12</sup>	<input type="radio"/>	<input type="radio"/>
Premium leather upholstery	<input type="radio"/>	<input checked="" type="radio"/>
Carbon fiber interior trim	<input type="radio"/>	<input type="radio"/>
Piano Black Lacquer interior trim (no charge)	<input type="radio"/>	<input type="radio"/>
19" 5-spoke wheels with high-performance tires <sup>4</sup>	<input type="radio"/>	<input type="radio"/>
19" AMG forged twin 5-spoke wheels <sup>4</sup>	<input type="radio"/>	<input type="radio"/>

● Standard    ○ Optional    – Not Available

## EUROPEAN DELIVERY PROGRAM

Pick up your new Mercedes-Benz in Germany through the original manufacturer-sponsored tourist delivery program. You'll enjoy significant savings<sup>24</sup> and other benefits, as well as the unforgettable experience of a European vacation with your own CLS-Class. Visit [MBUSA.com/edp](http://MBUSA.com/edp) for more information.

## DIMENSIONS

	CLS 550	CLS 63 AMG
<b>Wheelbase</b>	113.1"	113.1"
<b>Overall length</b>	194.5"	196.7"
<b>Overall height</b>	55.8"	55.4"
<b>Overall width</b>	81.7" (w/mirrors)	81.7" (w/mirrors)
<b>Curb weight</b>	4,255 lbs (w/4MATIC: 4,355 lbs)	4,277 lbs
<b>Headroom</b>	36.9" front / 36.1" rear	36.9" front / 36.1" rear
<b>Legroom</b>	42.1" front / 35.0" rear	42.1" front / 35.0" rear
<b>Shoulder room</b>	57.1" front / 56.5" rear	57.1" front / 56.5" rear
<b>Cargo capacity</b>	15.3 cu ft	15.3 cu ft



# COLOR AND TRIM.

## LEATHER UPHOLSTERY



Almond/Mocha (available only with Burl Walnut wood or carbon fiber trim)



Black (CLS 550 Wheel Packages add contrasting Grey stitching)



Ash/Black (not available with Burl Walnut wood trim)

## WHEEL CHOICES



18" 5-spoke (standard on CLS 550)



19" 5-spoke (optional on CLS 550)



18" AMG 5-spoke (optional on CLS 550 in Wheel Package)



19" AMG 5-spoke (optional on CLS 550 in Wheel Package Plus One)



19" AMG triple 5-spoke (standard on CLS 63 AMG)

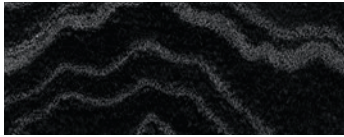


19" AMG forged twin 5-spoke (optional on CLS 63 AMG)

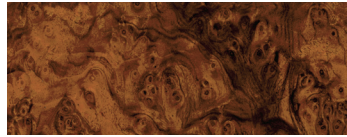
*INDIVIDUALLY CHOSEN.  
EXQUISITELY CRAFTED.*

*designo* is an exclusive program of paintwork and leather upholstery choices offering an extraordinary degree of handcrafted quality and personalization. To learn more about the *designo* paint and interior options for the 2013 CLS-Class, please ask your dealer, or visit [MBUSA.com/designo](http://MBUSA.com/designo).

## INTERIOR TRIM



Black Ash wood



Burl Walnut wood



Carbon fiber (CLS 63 AMG)



Piano Black Lacquer wood  
(CLS 63 AMG)

## PAINTWORK



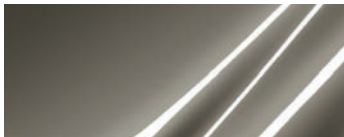
Black



Cuprite Brown metallic



Diamond White metallic<sup>25</sup>



Indium Grey metallic



Iridium Silver metallic



Lunar Blue metallic



Obsidian Black metallic



Palladium Silver metallic



Steel Grey metallic



Storm Red metallic

## ENDNOTES

- 1 Stated rates of acceleration are based upon manufacturer's track results and may vary depending on model, environmental and road surface conditions, driving style, elevation and vehicle load.
- 2 Preliminary 2013 EPA estimated fuel economy. See dealer for final figures. Compare the estimated mpg to the estimated mpg of other vehicles. You may get different mileage depending on how fast you drive, weather conditions and trip length. Your actual highway mileage will probably be less than the highway estimate.
- 3 No system, regardless of how advanced, can overcome the laws of physics or correct careless driving. Please always wear your seat belt. Performance is limited by available traction, which snow, ice and other conditions can affect. Always drive carefully, consistent with conditions. Best performance in snow is obtained with winter tires.
- 4 Lower aspect ratio tires and accompanying wheels provide substantially increased treadwear, increased tire noise and reduced ride comfort. Serious wheel and tire damage may occur if the vehicle is operated on rough or damaged road surfaces or upon encountering road debris or obstacles. These tires are not designed for use on snow and ice. Winter tires mounted on appropriately sized and approved wheels are recommended for driving in those conditions.
- 5 All Mercedes-Benz mbrace® services operate only where cellular and Global Positioning Satellite signals are available, which are provided by third parties and not within the control of Mercedes-Benz USA, LLC. An mbrace Package trial period is offered on new, Certified Pre-Owned and pre-owned sales and leases at an authorized Mercedes-Benz dealer. Subscriber Agreement is required for service to be active. Some services are only available on select vehicles. Your PIN is required in order to use certain services. Some services may be limited or restricted in some areas. Driver is responsible for complying with traffic and other laws. See your dealer or MBUSA.com/mbrace for details, including a list of compatible smartphones.
- 6 Driving while drowsy or distracted is dangerous and must be avoided. ATTENTION ASSIST and/or Lane Keeping Assist may be insufficient to alert a fatigued or distracted driver of lane drift and cannot be relied on to avoid an accident or serious injury. Lane Keeping Assist operates at speeds above approximately 20 mph.
- 7 Night View Assist does not replace the use of headlamps and must not be used as the primary visual source for the driver.
- 8 Rear view camera does not audibly notify driver of nearby objects and is not a substitute for actively checking around the vehicle for any obstacles or people. Images displayed may be limited by camera field of view, weather, lighting conditions and the presence of dirt, ice or snow on the camera.
- 9 PRE-SAFE® closes the side windows and sunroof when the system's sensors detect side movement that suggests a possible rollover.
- 10 Braking effectiveness also depends on proper brake maintenance, and tire and road conditions.
- 11 DISTRONIC PLUS adaptive cruise control is no substitute for active driving involvement. It does not react to stationary objects, nor recognize or predict the curvature and lane layout of the road or the movement of vehicles ahead. It is the driver's responsibility at all times to be attentive to traffic and road conditions, and to provide the steering, braking and other driving inputs necessary to retain control of the vehicle. Drivers are cautioned not to wait for the DISTRONIC Proximity Warning System before braking, as that may not afford sufficient time and distance to brake safely. After braking the car for stopped traffic ahead, system resumes automatically only if traffic pauses for less than 3 seconds.
- 12 WARNING: THE FORCES OF A DEPLOYING AIR BAG CAN CAUSE SERIOUS OR FATAL INJURIES TO A CHILD UNDER AGE 13. THE SAFEST SEATING POSITION FOR YOUR CHILD IS IN THE REAR SEAT, BELTED INTO AN APPROPRIATE, PROPERLY INSTALLED CHILD SEAT, OR CORRECTLY WEARING A SEAT BELT IF TOO LARGE FOR A CHILD SEAT. SEE OPERATOR'S MANUAL FOR ADDITIONAL WARNINGS AND INFORMATION ON AIR BAGS, SEAT BELTS AND CHILD SEATS.
- 13 Blind Spot Assist may not be sufficient to avoid all accidents involving vehicles in your blind spot and does not estimate the speed of approaching vehicles. It must not be used as a sole substitute for driver awareness and checking of surrounding traffic conditions.
- 14 Display appearance may vary from system shown. See dealer for additional information.
- 15 Bluetooth® interface does not provide phone charging or external antenna. Voice interactivity feature is dependent on selected handset. Visit MBUSA-Mobile.com for details. Phone sold separately. See dealer for a list of approved compatible phones.
- 16 The purchase of a new, satellite radio-enabled vehicle includes 6 months of service for SiriusXM Radio, SiriusXM Traffic and SiriusXM Weather. SiriusXM Traffic and Weather services are available in select markets. If you decide to continue your SiriusXM service at the end of this period, all SiriusXM services are sold separately, and the plan you choose will automatically renew and bill at then-current rates until you call 1-866-635-2349 to cancel. See SiriusXM Customer Agreement for complete terms, www.siriusxm.com. Sirius U.S. Satellite service available only to those at least 18 years of age in the 48 contiguous United States, DC and Puerto Rico (with coverage limitations).
- 17 All iPod® devices are sold separately. Feature not compatible with iPod Shuffle. See dealer for details.
- 18 While the navigation system provides directional assistance, the driver must remain focused on safe driving behavior, including paying attention to traffic and street signs. The driver should utilize the system's audio cues while driving and should only consult the map or visual displays once the vehicle has been stopped in a safe place. Maps do not cover all areas or all routes within an area.
- 19 Heated steering wheel and wood/leather steering wheel cannot be ordered together. Sport steering wheel is excluded from Wheel Packages if either the heated steering wheel or wood/leather steering wheel is ordered. Heated steering wheel requires Lane Tracking or Driver Assistance Package.
- 20 Obey local speed and traffic laws.
- 21 Roadside Assistance repairs may involve charges for parts, service and towing. Vehicle must be accessible from main roads. Depending on the circumstance, these services may be provided by an outside provider, courtesy of Mercedes-Benz Roadside Assistance. Restricted roadways, acts of nature and vehicle accessibility may limit our ability to provide services to you. For full details, eligibility requirements, and limitations/exclusions of Sign and Drive services, as well as the Roadside Assistance Program, please see your dealer.
- 22 mbrace is compatible with Apple iPhone® models running iOS 4.2 or later, and Android-based phones running OS 2.1 or later. Please visit MBUSA.com/mbrace for more information.
- 23 The carbon-ceramic brakes are designed expressly for high-performance braking. It is a characteristic of their materials and design that brake noise/squeal may result, along with differing brake pedal feel at lower brake temperatures compared to higher operating temperatures.
- 24 European Delivery Program discount available on select models, other models offered at MSRP. Please see your dealer for details.
- 25 Extra-cost option.



*FOR A SMALL BLUE PLANET.*

For more than 125 years—longer than any other automaker—we’ve been sharing this planet with you. And for generations, Mercedes-Benz has been breaking new ground to help preserve the earth for future generations. We introduced the world’s first 100% CFC-free car, not just in its air conditioning but in its entire production process. We’ve used water-borne paint for decades. And our interiors have long used steam-expanded foam, sustainably forested wood, and natural products from coconut, flax and even olives. We’ve been pioneering advanced powertrains for generations, leading not just to today’s Direct Injection gasoline, clean diesel and hybrid models, but to the electric and fuel cell vehicles of a tomorrow that’s already here. Mercedes-Benz is also legendary for making cars of exceptional durability. After all, it takes about the same energy to build a car that lasts as one that won’t. And along with award-winning factories and processes, we’re helping to develop local infrastructures around the world to help bring a greener future to life. Like every aspect of Mercedes-Benz innovation, today’s work sets the stage for the mobility—and the planet—that everyone will enjoy tomorrow.

*JOIN THE CONVERSATION.*



follow us: [facebook.com/mercedesbenzusa](https://facebook.com/mercedesbenzusa)



follow us: [twitter.com/mbusa](https://twitter.com/mbusa)



visit us: [MBUSA.com](https://MBUSA.com)

©2012 Mercedes-Benz USA, LLC • One Mercedes Drive, Montvale, NJ 07645 • 1-800-FOR-MERCEDES • MBUSA.com  
Marketing Communications. All illustrations and specifications contained in this brochure are based on the latest product information available at the time of publication. Mercedes-Benz reserves the right to make changes at any time, without notice, to colors, materials, equipment, specifications and models. Any variations in colors shown are due to reproduction variations of the printing process. Illustrations may include test situations. Some vehicles may be shown with non-U.S. equipment. Some vehicles are shown with optional equipment. iPhone and iPod are registered trademarks of Apple Inc. Bluetooth is a registered trademark of Bluetooth SIG, Inc. Android, Google Maps, Google Street View and Panoramio are registered trademarks of Google Inc. harman/kardon and LOGIC7 are registered trademarks of Harman International Industries, Inc. HD Radio is a proprietary trademark of iBiquity Digital Corporation. Sirius, XM and all related marks and logos are trademarks of Sirius XM Radio Inc.

