



The 2010 SLK-Class

Mercedes-Benz

The roadster redefined.

Mercedes-Benz and the classic roadster have been irrevocably linked for a century. So who better to refine and redefine this much-heralded and greatly loved class of motor car? We think you'll agree that the SLK keeps the spirit and passion of the heritage roadster alive while combining it with a sense of refinement that's like no other.









The SLK-Class

DESIGN	
Exterior	4
Vario-roof	6
Interior	8
Entertainment and Communication	10
<hr/>	
AGILITY	
Engines	12
Transmissions	14
Handling	16
<hr/>	
SAFETY	18
<hr/>	
PERFORMANCE	
AMG	20
<hr/>	
COLOURS AND MATERIALS	
Paint, combination options	22
Upholstery and trim	24
<i>designo</i>	26
<hr/>	
EQUIPMENT	
Wheels	28
Equipment listing	30
<hr/>	
ACCESSORIES	32
<hr/>	
TECHNICAL FEATURES	
Technical data	33
<hr/>	
MERCEDES-BENZ OWNERSHIP	34
<hr/>	
MERCEDES-BENZ WEBSITE	35
<hr/>	
TEST DRIVE	36
<hr/>	

An Arrow to fire down the highway.

One glance reveals the bold, spirited styling. The distinctive nose and radiator grille emanate controlled aggression, and you'll immediately notice the sport alloy wheels and exhaust tailpipes. Its air-piercing, arrow-shaped body features exterior mirrors with integrated, arrow-shaped indicator lamps. There's divinity in the details as well – like in the darkened taillights, shorter car-wash friendly aerial, and spectacular metallic paint choices. And finally, with the addition of the attention grabbing AMG Styling Package¹ that now comes standard on the SLK350, it's clear that the SLK-Class has taken poise to a whole new pinnacle.

¹Not available on the SLK300.







The ultra-civilized roof changes faster than the weather itself.

Press a button and in just 22 seconds, find yourself at one with the elements. The electro-hydraulic vario-roof moves backwards in a single elegant motion and disappears into the rear of the car, out of sight. Thanks to its intelligently designed folding mechanism, the SLK is able to offer a truly impressive amount of trunk space when the roof is lowered. When the roof is raised, the tinted glass has a pleasant cooling effect, while at colder temperatures the heated rear windshield gives you a clear view of those desperately trying to keep up.

To keep your comfort optimized there's standard THERMATIC dual-zone automatic climate control on the SLK300 and THERMOTRONIC dual-zone automatic climate control with digital display, automatic airflow control and moisture and air quality sensors – standard on the SLK350 and SLK55 AMG.



Master the sport of luxury.

Lose yourself in a world where sport meets luxurious detail. The seats, with their sporty contours and magnesium frames, are not only stunningly attractive but also offer plenty of lateral support during dynamic cornering. The soothing, heated seats¹ are fitted with handy clothes hooks and are draped in fine, soft leather upholstery. Standard exclusively in the SLK55 AMG is premium, hand-fitted AMG Nappa leather², the pinnacle of uncompromising style and comfort.

When the season cools off, enjoy pleasantly warm air on the back of your neck with AIRSCARF neck-level heating³. Select different temperature settings while the blower adjusts automatically to the vehicle's speed.

Take hold of the sport steering wheel with standard multi-function buttons, or choose our available heated version⁴ that warms to your touch. The instrument cluster immediately catches your eye with its red needles and elegant 3D-look instrument rings with chrome borders. All the information you need lies perfectly laid out before you. This year, Aluminium trim⁵ is standard, however light Burl Walnut⁶ and Dark Ash wood trim⁶ or Carbon trim⁷ are available optionally.

It all adds up to pure luxury, a sport well worth mastering.

Race-bred chronometer-style gauges complement the SLK's cockpit, featuring a speedometer, fuel gauge, tachometer and multifunction display. Silver trim contrasts the darker sculpted dash.



¹Only available as part of the Premium Package on the SLK300. Standard on the SLK350 and SLK55 AMG. ²Not available on the SLK300 and SLK350. ³Only available as part of the Premium Package on the SLK300 and SLK350. Standard on the SLK55 AMG. ⁴Only available as part of the Premium Package on the SLK300 and SLK350. Not available on the SLK55 AMG. ⁵Not available in conjunction with the SLK300 Sport Package. ⁶Available as a stand alone option on the SLK300 and SLK350. Not available in conjunction with the SLK300 Sport Package. Not available on the SLK55 AMG. ⁷Standard on the SLK300 only in conjunction with the Sport Package. Not available on the SLK350 and the SLK55 AMG.





Knowledge is power.

Mercedes-Benz wants to keep you completely informed, so there's a plethora of ways for you to stay connected, entertained and assured. It begins with integrated Bluetooth connectivity for mobile communication devices. The in-dash 6-disc CD changer and AM/FM weather-band radio with steering wheel controls at your fingertips is MP3-compatible with an auxiliary input in the glove box which allows you to easily connect to your media player. If you upgrade to the optional Media Interface¹ you'll get 3 different connection cables, one for your iPod®, a USB input for memory sticks and the auxiliary audio input, plus complete control over the devices using the in-dash CD player or multifunction buttons on your steering wheel. Take your symphonies to another level with the 500 watt harman/kardon® LOGIC7® surround sound system² and SIRIUS Satellite Radio³ featuring 120 channels, including 100% commercial-free music from every genre, plus sports, news, talk and comedy – all with crystal-clear, coast-to-coast coverage.

Our available COMAND APS¹ control and display system puts all the necessary information on a 6.5" high-resolution full colour screen in view. It combines hard-drive navigation, audio and telephone into one intuitive and elegant design. The interface has extended functionality and is more intelligent and user-friendly than ever before, with no need to change navigation DVDs thanks to an internal hard-drive storage system. Also included are the new generation, voice-optimized LINGUATRONIC voice control and an SD memory card slot for MP3 playback.



¹Available as a stand alone option on the SLK300 and SLK350. Standard on the SLK55 AMG. ²Only available as part of the Entertainment Package on the SLK300 and SLK350. Standard on the SLK55 AMG. ³© 2009 SIRIUS Satellite Radio Inc. "SIRIUS," the SIRIUS dog logo and related marks are trademarks of SIRIUS Satellite Radio Inc. Complimentary 6 months of service included. Monthly subscription required for service thereafter. Only available as part of the Entertainment Package on the SLK300 and SLK350. Standard on the SLK55 AMG.



At the heart of it all: impassioned vitality.

The SLK-Class' engines provide not only a perfectly tuned treat for the ear; their lively performance is equally impressive, to say the least. How impressive? Catch your breath with a V-6 engine on the SLK300 that accelerates from 0 to 100 km/h in a mere 6.3 seconds. Consider that total displacement is 2,996-cc with net power of 228 hp. The V-6 sport engine on the SLK350 is even more breathtaking. Its exceedingly muscular power plant delivers an awe-inspiring 300 hp and 266 lb-ft of torque. This adds up to a sprint from 0 to 100 km/h in just 5.4 seconds. That's nothing short of exceptional performance.

Power is one important consideration and the environment is one of an equally vital nature. That's why in spite of the considerably enhanced outputs of the engines, we have reduced their CO₂ emissions and fuel consumption.

Now we arrive at the king of all the engines. The V-8 sport engine in the SLK55 AMG launches the roadster with an impressive 4.9 seconds from 0 to 100 km/h; its stunning 355 hp output generates grins and goose bumps with the push of a pedal.

When the road throws you a curve, hit it out of the park.

Enjoy the sport of driving with the help of an impressively designed 6-speed manual transmission, which comes standard in the SLK300 and SLK350¹.

Optional for the SLK300 and SLK350, 7G-TRONIC² is the world's first 7-speed automatic transmission. The use of seven speeds results in smaller intervals between ratios, and due to the multiple downshift principle, the transmission skips some gears under kick-down for faster acceleration. The use of seven speeds also reduces average engine speeds, and in turn, lowers fuel consumption. On the SLK350, 7G-TRONIC includes a double declutching function on downshifts to maximize performance while the SLK55 AMG is equipped with AMG SPEEDSHIFT enhancements to ensure maximum performance while maintaining supreme ride comfort.

¹Not available on the SLK55 AMG. ²Standard on the SLK55 AMG.









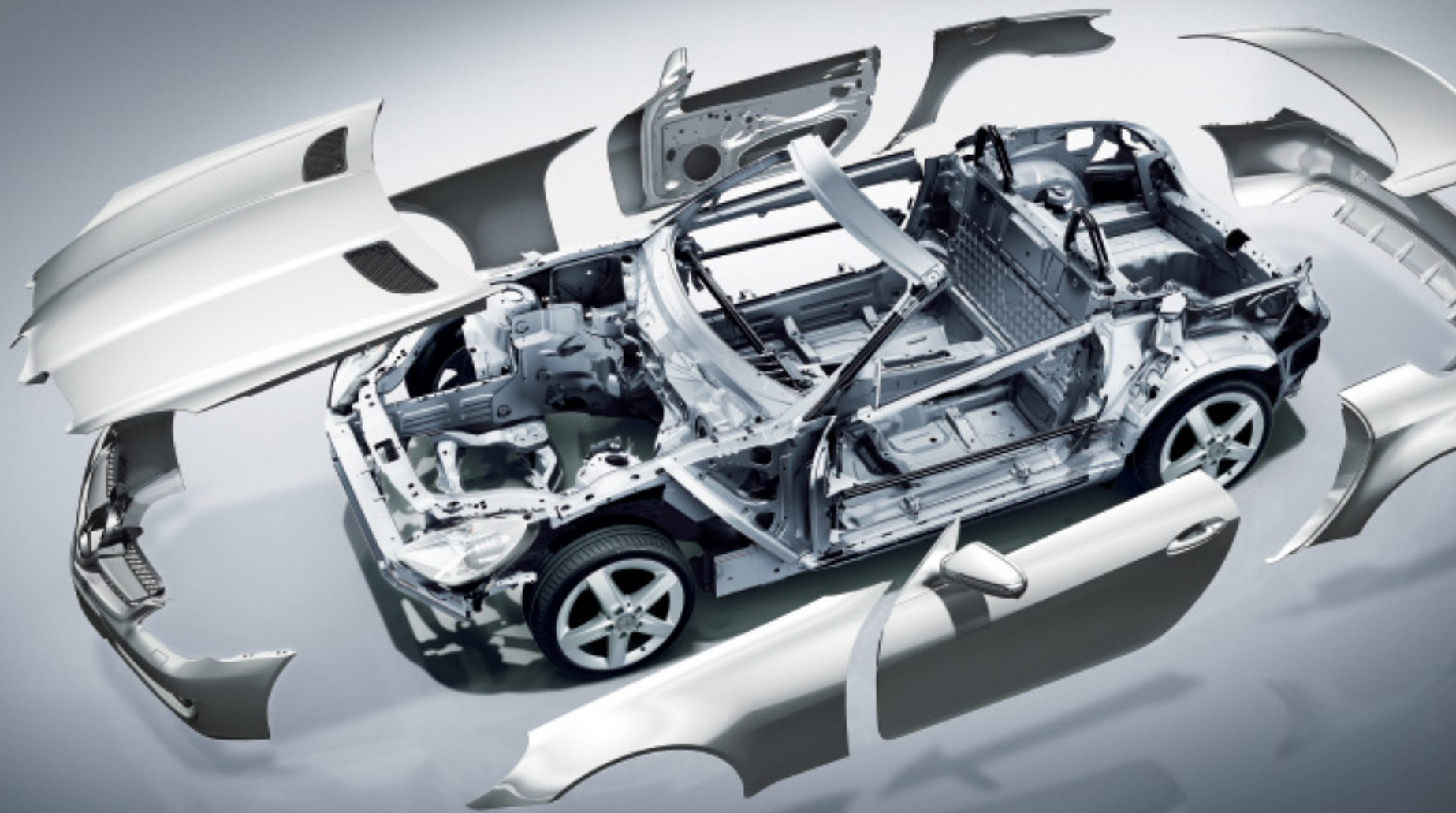
Take hold of the road like never before.

“Handles like a roadster” is a term of praise and this redefined roadster ups the ante.

Enjoy the confidence that comes with astonishingly responsive sport suspension, a sophisticated, powerful braking system and performance tires. Upgraded direct steering with variable-force steering assistance provides a clear invitation to get behind the wheel; you’ll particularly enjoy the greater ease of steering exactly when needed – during the intricacies of parking for example. Even the little extras have a huge effect, such as the rain-sensing windshield wipers and intrinsically clever auto-dimming mirrors.

Inside, the Power Seating Package¹, including 3-position memory with power steering column, stores the settings for the steering wheel, mirrors and the supremely comfortable 10-way power-adjustable sports seats. From top to bottom, the SLK-Class caters to those with the pre-eminent driving experience in mind.

¹Optional on the SLK300. Only available as part of the Premium Package on the SLK350. Standard on the SLK55 AMG.



Safety is our obsession.

Technology may one day make it possible to see into the future so that vehicles can avoid dangerous situations altogether. Until such a day, we are committed to protecting you from unforeseen driving hazards with our comprehensive range of intelligent active and passive safety concepts.

ESP® AND BAS

If your vehicle is in danger of skidding, the Electronic Stability Program (ESP®) helps stabilize the situation by braking one or more wheels as required¹, and adjusting the engine output accordingly. Working in tandem, the Brake Assist system (BAS) recognizes emergency braking by the speed with which you lift off the accelerator and press the brake pedal, immediately applying maximum braking force if necessary.

HEADLAMPS

The SLK300 is equipped with standard clear-lens halogen headlamps that provide optimum illumination without affecting other drivers. The SLK350 and SLK55 AMG are equipped with Bi-Xenon headlamps² that feature dynamic range adjustment, headlamp washers and the cornering light function for added illumination.

THE PASSENGER SAFETY CELL

Our inner strength includes superbly engineered crumple zones, outstanding torsional stiffness and rollover bars ingeniously anchored in the body for additional protection.

AIR BAGS AND SEAT BELTS

In the event of a head-on collision, the restraining effect of the seat belt tensioners works in tandem with the adaptive driver and passenger air bags³. These have a two-stage deployment system, which is triggered according to the severity of the impact. Two additional, highly sensitive crash sensors at the front of the vehicle detect the severity of the accident with an even greater degree of precision.

Furthermore, the SLK-Class is equipped with head/thorax air bags. Fitted in the outside edge of the seat backrests, these enlarged air bags offer additional head protection by inflating to prevent any contact between occupants and the door/window in the event of a side collision. Potential hazards are detected by the rollover sensor, which triggers both belt tensioners and the head/thorax air bags in certain sideways rollover situations.

¹No system, regardless of how advanced, can overcome the laws of physics or correct careless driving. Please always wear your seat belt. Best performance in snow is obtained with winter tires. ²Only available as part of the Bi-Xenon Headlamp Package on the SLK300. Standard on the SLK350 and SLK55 AMG. ³WARNING: The forces of a deploying air bag can cause serious or fatal injuries to a child under age 13. See Operator's Manual for additional warnings and information on air bags, seat belts and child seats.

It can feel you staring.

But who can help it with the truly exquisite exterior of the SLK55 AMG roadster? Then consider a 0 to 100 km/h time of 4.9 seconds. Quite a performance pedigree. With its AMG-built 5.5-litre V-8 engine, the SLK55 AMG is unique in its class, delivering a sonorous 355 hp and peak torque of 376 lb-ft. The power flow to the wheels is managed by the 7G-TRONIC automatic transmission with AMG SPEEDSHIFT enhancements for precise gear shifts.

There's a lot that accompanies the power and muscle of the SLK55 AMG. Along with the corner-hugging AMG sport suspension¹, there is aggressive body styling and the AMG 18" 5 twin-spoke alloy wheel design, reserved exclusively for you. The details continue to impress with the AMG sport exhaust system with dual twin-chromed tailpipes and the AMG high-performance brake system with composite discs and 6-piston fixed calipers.

The interior, meanwhile, welcomes you with the finest-quality AMG Nappa leather upholstery, AMG sport seats, an ergonomic AMG sport steering wheel with shift paddles in silver-coloured aluminium, and the assertive AMG instrument cluster with RACETIMER. There's also a standard navigation system that knows where you're going before you do.

Little wonder the SLK55 AMG roadster draws stares. You don't mind, do you?

¹Only available as part of the AMG Performance Package.





AMG

Express yourself.



Colour is the most personal choice of all. So which one expresses you best? And which interior do you choose to live in? After all, the perfect finishing details are what make an automotive masterpiece. And here's a reassuring thought: both solid and metallic paint finishes benefit from an extra scratch-resistant clear coat. This makes your colour less susceptible not only to scratches, but also to sunlight, temperature variations, dust and soot.

	LEATHER	Black	Orient Beige	Gullwing Red	Alpaca Grey	NAPPA LEATHER	Black	Natural Beige	AMG NAPPA LEATHER	Black	Orient Beige	Gullwing Red/Black	Alpaca Grey/Black
SOLID PAINT													
Black	●	●	●	●	●	●	●	●	●	●	●	●	●
Fire Opal	●	○	○	●	●	●	○	●	○	○	○	●	●
Calcite White	●	○	●	●	●	●	●	●	○	●	●	●	●
METALLIC PAINT													
Obsidian Black	●	●	●	●	●	●	●	●	●	●	●	●	●
Indigolite Blue	●	○	○	○	○	●	○	●	○	○	○	○	○
Tanzanite Blue	●	○	○	●	●	●	○	●	○	○	○	●	●
Tenorite Grey	●	○	●	●	●	●	●	●	○	●	●	●	●
Iridium Silver	●	○	●	○	○	●	●	●	○	●	○	○	○
Palladium Silver	●	○	○	○	○	●	○	●	○	○	○	○	○

● Recommended combination ○ Possible combination

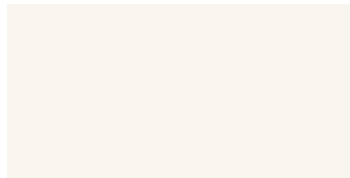
SOLID PAINT



040 Black



590 Fire Opal



650 Calcite White

METALLIC PAINT (OPTIONAL)



197 Obsidian Black



230 Indigolite Blue



359 Tanzanite Blue



755 Tenorite Grey



775 Iridium Silver



792 Palladium Silver



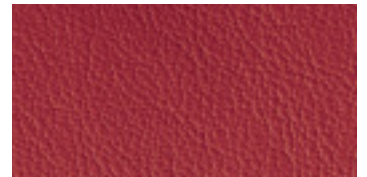
LEATHER



801 Black



815 Orient Beige



817 Gullwing Red



808 Alpaca Grey

NAPPA LEATHER



861 Black



874 Natural Beige

AMG NAPPA LEATHER



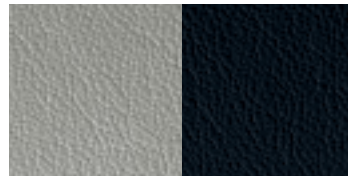
851 Black



855 Orient Beige



887 Gullwing Red/Black



858 Alpaca Grey/Black

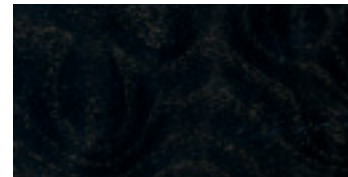
TRIM



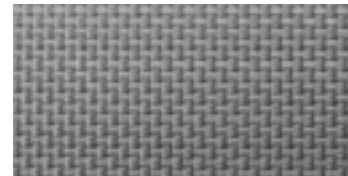
H80 Aluminium



H12 Light Burl Walnut



736 Dark Ash



H74 Carbon



H73 AMG Carbon Fibre



Nobody can get inside your head. But they can get inside your car.

Custom-design your SLK-Class like no one else, with the help of our *designo* range, which is comprised of many exclusive metallic paint finishes, fine woods and high-quality leather upholstery – or combined leather and Alcantara with striking double stitching. Matching leather trim elements and leather trimmed rollover bars are also available.

You can also specify *designo* wood trim elements, in *designo* Anthracite Tamo or *designo* Natural Poplar. Or, choose an Alcantara roof lining. Depending on which *designo* trim or upholstery elements you select, we can also supply the steering wheel and selector lever in two-tone *designo* leather or in a *designo* wood/leather version.

Please see your dealer for details.

Superb finishing details like leather-wrapped rollover bars in Classic Red reaffirm the SLK-Class' European roadster heritage.



What comes between you and the road.

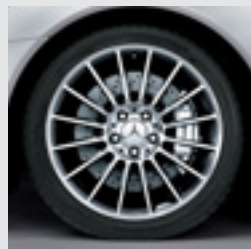
Grabbing the eye as well as they grip the road, all five SLK-Class wheel options are designed with the same philosophy as the rest of this inspired vehicle. Style, substance and safety are the cornerstones of Mercedes-Benz, and none of them were spared while developing these impressive wheels.



16" 5-spoke alloy wheel



17" 6-twin-spoke alloy wheel



AMG 18" multi-spoke alloy wheel



AMG 18" 5-twin-spoke alloy wheel



AMG 18" 5-twin spoke multi-piece alloy wheel





INDIVIDUAL EQUIPMENT (SELECTION)	SLK300	SLK350	SLK55 AMG
TRANSMISSION			
6-speed manual transmission	●	●	-
7G-TRONIC 7-speed automatic transmission	○	○	-
AMG SPEEDSHIFT 7G-TRONIC 7-speed automatic transmission	-	-	●
TRACTION/STABILITY			
DIRECT CONTROL suspension	●	●	●
Direct steering with variable-force steering assistance	●	●	●
Sport suspension	●	●	-
AMG sport suspension	-	-	○ ¹
Electronic Stability Program (ESP) ¹ including ABS and traction control (ASR)	●	●	●
Brake Assist (BAS)	●	●	●
AUDIO/VISUAL/COMMUNICATION			
MP3-compatible in-dash 6-disc CD changer with AM/FM/weather-band radio	●	●	●
Bluetooth connectivity	●	●	●
Auxiliary input in glove box	●	●	●
Media interface (with iPod [®] , USB and auxiliary connections)	○	○	●
harman/kardon [®] LOGIC7 [®] surround sound system	○ ¹	○ ¹	●
SIRIUS Satellite Radio ²	○ ¹	○ ¹	●
COMAND APS with hard drive-based navigation, DVD changer, Music Register and SD memory slot	○	○	●
LINGUATRONIC voice control	○ ³	○ ³	●
EXTERIOR			
16" 5-spoke alloy wheels	●	-	-
17" 6-twin spoke alloy wheels	○ ¹	-	-

INDIVIDUAL EQUIPMENT (SELECTION)	SLK300	SLK350	SLK55 AMG
AMG 18" multi-spoke alloy wheels	-	●	-
AMG 18" 5-twin spoke alloy wheels	-	-	●
AMG 18" 5-twin spoke multi-piece alloy wheels	-	-	○ ¹
Heated windshield washer system with two-stage rain-sensing windshield wipers	●	●	●
Tinted glass	●	●	●
Bi-Xenon headlamps with washers and cornering lights	○ ¹	●	●
Smoked appearance headlamps	○ ¹	-	-
AMG Styling Package (front apron, side skirts, trunk lid spoiler and rear apron)	-	●	●
Perforated front brake discs and brake calipers with Mercedes-Benz lettering	○ ¹	●	●
Internally vented composite front brakes	-	-	○ ¹
INTERIOR			
Sport seats	●	●	●
Heated seats	○ ¹	●	●
10-way power-adjustable seats with 3-position memory	○ ¹	○ ¹	●
Leather-wrapped multifunction sport steering wheel and shift knob	●	●	●
AMG leather/Alcantara performance steering wheel	-	-	○ ¹
Heated steering wheel	○ ¹	○ ¹	-
Steering wheel shift paddles	○ ⁴	NC ⁵	●
Leather upholstery	●	●	-
Nappa leather upholstery	-	○	-
AMG Nappa leather upholstery	-	-	●
Aluminium trim ⁶	●	●	●

INDIVIDUAL EQUIPMENT (SELECTION)	SLK300	SLK350	SLK55 AMG
Carbon trim	○ ¹	-	-
Light Burl Walnut wood trim (includes steering wheel and hand brake)	○ ⁶	○ ⁷	-
Dark Ash wood trim (includes steering wheel and hand brake)	○ ⁶	○ ⁷	-
AMG Carbon Fibre trim	-	-	○ ¹
THERMATIC dual-zone automatic climate control	●	-	-
THERMOTRONIC dual-zone automatic climate control	-	●	●
Power windows with one-touch express up and down	●	●	●
Auto dimming mirrors (rearview and driver's side)	●	●	●
AIRSCARF	○ ¹	○ ¹	●
Fabric wind screen	○ ¹	○ ¹	●
Power-tilt/telescoping steering column with 3-position memory	○ ¹	○ ¹	●
CONVENIENCE			
Cruise control	●	●	●
Integrated garage door opener	●	●	●
SmartKey with panic button	●	●	●
Valet trunk locking	●	●	●
SAFETY			
Anti-theft alarm system	●	●	●
Two 3-point height-adjustable seat belts	●	●	●
Belt tensioners with belt-force limiters	●	●	●
Dual-front air bags and head/thorax side air bags	●	●	●
First aid kit	●	●	●
TeleAid Emergency Calling System ⁸	●	●	●

EQUIPMENT PACKAGES

	SLK300	SLK350	SLK55 AMG
SLK300 PREMIUM PACKAGE: AIRSCARF. Fabric wind screen. Heated seats. Heated steering wheel.	○	-	-
SLK350 PREMIUM PACKAGE: 10-way power adjustable seats with power steering column and 3-position memory. AIRSCARF. Fabric wind screen. Heated steering wheel.	-	○	-
SPORT PACKAGE: 17" 6-twin-spoke alloy wheels. Sport braking system. Perforated front brake discs and brake calipers with Mercedes-Benz lettering. Smoked appearance headlamps. AMG trunk lid spoiler. Steering wheel shift paddles ² . Black roof liner. Decorative red top stitching with matching red seat belts. Carbon trim.	○	-	-
AMG PERFORMANCE PACKAGE: AMG 18" 5-twin-spoke multi-piece wheels. AMG sport suspension with Nürburgring calibration. Internally vented composite front brakes. Electronic speed limiter deletion ¹⁰ . AMG Carbon Fibre trim. AMG leather/Alcantara performance steering wheel.	-	-	○
ENTERTAINMENT PACKAGE: harman/kardon ³ LOGIC7 ⁷ surround sound system. SIRIUS Satellite Radio ²	○	○	-
BI-XENON HEADLAMPS PACKAGE: Bi-Xenon headlamps. Cornering lights. Headlamp washers.	○	-	-
POWER SEATING PACKAGE: 10-way power adjustable seats with 3-position memory.	○	-	-

● Standard ○ Optional - Not Available NC No-Charge Option

¹Only available as part of an option package. ²© 2009 SIRIUS Satellite Radio Inc. "SIRIUS"; the SIRIUS dog logo and related marks are trademarks of SIRIUS Satellite Radio Inc. Complimentary 6 months of service included. Monthly subscription required for service thereafter. ³Only available in conjunction with COMAND APS. ⁴Only available in conjunction with 7G-TRONIC 7-speed automatic transmission. Only available as part of the Sport Package. Heated steering wheel removed when ordered with the Premium Package. Not available with wood trim. ⁵Only available in conjunction with 7G-TRONIC 7-speed automatic transmission. Replaces heated steering wheel when ordered with the Premium Package. Not available with wood trim. ⁶Not available in conjunction with the SLK300 Sport Package. ⁷Not available in conjunction with steering wheel shift paddles. ⁸Subscription is required for service to be active. TeleAid operates only where cellular and Global Positioning System coverage is available. ⁹Only available in conjunction with 7G-TRONIC 7-speed automatic transmission. ¹⁰Intended for track use only. Please obey all speed laws.

Crowning glories.



Drive through your kingdom in high-class customized style, with genuine Mercedes-Benz accessories. All Mercedes-Benz accessories are a cut above, having been designed and manufactured to the highest standards for design, engineering, quality, form and function. Added nuance and unique refinement are just the things to make your SLK-Class a distinctively rich driving experience.

Front Spoiler Lips

An outstanding example of form meeting function. Turn heads with your Front Spoiler's body-complimenting design, as you simultaneously (and seamlessly) cut through resisting air.



Chrome Grille Inserts Set

Distinctive chrome trim elements for the front bumper and the cross fins of the radiator, help round out the general sporty appearance of the SLK.



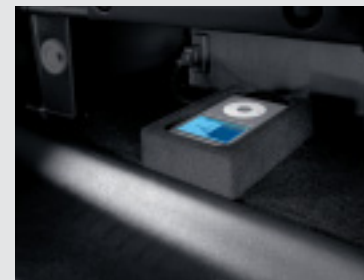
Windscreen

Enjoy a wild yet controlled ride with your choice of three-part transparent or fabric draught stop. Placed directly behind headrests and roll bars, it ingeniously improves aero-acoustics while preventing draughts – for both open roof and closed soft-top.



iPod® Integration Kit

You've spent time carefully filling your iPod® with the great music you love. Now you can enjoy every minute of every song as you cruise to the tunes, courtesy of the iPod® Integration Kit.



	SLK300	SLK350	SLK55 AMG
Engine Type	DOHC 24-valve V-6	DOHC 24-valve V-6	SOHC 24-valve V-8
Total displacement	2,996-cc	3,498-cc	5,439-cc
Net power	228 hp @ 6,100 rpm	300 hp @ 6,100 rpm	355 hp @ 5,750 rpm
Net torque	221 lb-ft @ 2,500-5,000 rpm	266 lb-ft @ 2,400-5,000 rpm	376 lb-ft @ 4,000 rpm
Acceleration ¹ , 0-100 km/h	6.3 seconds	5.4 seconds	4.9 seconds
Approximate top speed ²	210 km/h	210 km/h	250 km/h
Tires, front	205/55 R 16	225/40 R 18	225/40 R 18
rear	225/50 R 16	245/35 R 18	245/35 R 18
Fuel economy ³ , city/highway estimate	11.2-7.6 L/100 km	11.6-8.0 L/100 km	14.8-9.0 L/100 km
Fuel tank capacity	70.0 litres (with 9.0-litre reserve)	70.0 litres (with 9.0-litre reserve)	70.0 litres (with 9.0-litre reserve)
Fuel requirement	Premium unleaded gasoline	Premium unleaded gasoline	Premium unleaded gasoline
Dimensions ⁴			
Wheelbase	95.7 in / 2,430 mm	95.7 in / 2,430 mm	95.7 in / 2,430 mm
Overall length	161.5 in / 4,103 mm	161.5 in / 4,103 mm	161.4 in / 4,099 mm
Overall height	51.0 in / 1,296 mm	51.1 in / 1,298 mm	50.7 in / 1,287 mm
Overall width inclu. mirrors	79.2 in / 2,012 mm	79.2 in / 2,012 mm	79.2 in / 2,012 mm
Curb weight	3,241 lb / 1,470 kg	3,285 lb / 1,490 kg	3,461 lb / 1,570 kg
Trunk capacity	10.6 cu ft / 300 litres	10.6 cu ft / 300 litres	10.6 cu ft / 300 litres

¹Stated rates of acceleration are based on the manufacturer's track results and may vary depending upon model, environmental and road surface conditions, driving style, elevation and vehicle load. ²Electronically limited. ³These estimates are based on Transport Canada testing methods. Estimates for the SLK300 and SLK350 are based on 7G-TRONIC models. The actual fuel consumption of this vehicle may vary. Refer to the *Fuel Consumption Guide*. ⁴Dimensions shown are for models with standard equipment.

A passion for things done right.

It's what you expect from Mercedes-Benz. A passion for craftsmanship and attention to detail is what sets Mercedes-Benz apart from all other manufacturers. This passion drives us to set new standards in design, performance, comfort and safety. To continually build on the legendary traditions of Mercedes-Benz. And to provide you with an ownership experience unlike any other, including the valuable benefits described below.

24-hour Roadside Assistance

During the basic warranty coverage of 48 months and the time duration of the optional Extended Limited Warranty, Mercedes-Benz Roadside Assistance will be at your service. We'll bring you some gas, replace a flat tire with your spare, or jumpstart your car. In the event of a mechanical breakdown, if attempts by our Roadside Assistance technician have not made your vehicle safely operable, towing service will be provided to the nearest Mercedes-Benz dealership. Assistance is available 24 hours a day, every day, to anyone driving a Mercedes-Benz anywhere in Canada or the continental U.S.¹

Wear and tear period

The following parts listed are covered for wear and tear during the first 24 months or 40,000 km whichever comes first. Brake pads, brake discs, brake pad wear sensors and light bulbs.

Mercedes-Benz warranties

The Mercedes-Benz New Vehicle Limited Warranty covers defects in materials or workmanship for 48 months or 80,000 km, whichever occurs first. To widen your window of confidence, you can opt for a Mercedes-Benz Extended Limited Warranty as well.²

Customer service

Owning a Mercedes-Benz means that when you have a question, we're here to help. Customer Service is open from 9 a.m. to 5 p.m. EST, Monday through Friday, and is staffed with knowledgeable Mercedes-Benz people who can talk you through the finer points of working your car's audio system – or even assist you in locating the nearest Mercedes-Benz dealership. Just call 1-800-387-0100. It's that simple.

Trip interruption reimbursement

If a breakdown covered by your New Vehicle Limited Warranty or optional Extended Limited Warranty occurs more than 80 km from your home, leaves your Mercedes-Benz vehicle inoperable or unsafe to drive, and requires overnight repairs, we've got you covered. You will be reimbursed up to \$500 for hotel accommodations and up to \$600 for alternative travel expenses per incident while your car is being repaired at an authorized Mercedes-Benz dealership.

¹Vehicle must be accessible from main roads. Roadside Assistance may involve charges for parts, service and towing. Depending on the circumstances, these services may be provided by an outside service provider, courtesy of Mercedes-Benz Roadside Assistance. For full details of the Roadside Assistance Program, please see your dealer. ²Please see your dealer for warranty details as well as for terms, conditions and pricing for extended warranty options.

There's virtually so much more.

Visit mercedes-benz.ca and open an online window to Mercedes-Benz Canada. Revel in the incredible photography of our vehicles and get a visceral impression of what it would be like to see yourself behind the wheel. Get information about any of our vehicles, including financing and leasing options, upcoming models, and how to configure your own ideal Mercedes online. Our website also offers details about the Mercedes-Benz Extended Limited Warranty, vehicle ownership, and much more on the fascinating story behind one of the world's most recognizable brands.



To be continued. With a test drive.

Nowhere is a Mercedes-Benz so convincing as on the road. It is only there that you can fully experience the effortlessly superior handling that makes this car so special. You can feel how the powerful engine drives the vehicle onwards and how the precise steering movements have a direct effect on your own mood. The special atmosphere that arises during a drive in a Mercedes-Benz cannot be put down on paper. That's why we would like to invite you to reserve an appointment for a test drive at your local Mercedes-Benz dealer. Or visit www.mercedes-benz.ca. We look forward to seeing you.





Mercedes-Benz

© 2009 Mercedes-Benz Canada Inc.

All illustrations and specifications contained in this brochure are based on the latest product information available at the time of publication. Mercedes-Benz Canada reserves the right to make changes at any time, without notice, in colours, materials, equipment, specifications and models. Any inaccuracies in colours shown are due to reproduction variations of the printing process. Some vehicles may be shown with non-Canadian equipment. Some vehicles may be shown without side marker lights. Some vehicles are shown with optional equipment available at extra cost. Some optional equipment may not be available on all models. For current information regarding the range of models, standard features, optional equipment and/or colours available in Canada and their pricing, contact your nearest authorized Mercedes-Benz dealer or visit mercedes-benz.ca. harman/kardon and LOGIC7 are registered trademarks of Harman International Industries Inc. iPod is a registered trademark of Apple Computer, Inc.

Printed in Canada
MBC-09-SLK10-6050E

Mercedes-Benz Canada Inc. 98 Vanderhoof Avenue, Toronto, Ontario M4G 4C9
1-800-387-0100
www.mercedes-benz.ca

