



2009 S-Class

Mercedes-Benz



S 550 shown in Black paint with optional AMG Sport Package.

While it can reach 60 mph
in just 5.4 seconds,¹
its truest attributes
are timeless.

Groundbreaking innovation, awesome power, timeless style—the Mercedes-Benz S-Class has held drivers' admiration for decades. And in 2009, that attraction will only grow. In the S-Class, you'll find a wealth of features that make a difference—for instance, a warning if a vehicle is detected in your blind spot, as well as systems that judge the size of a parking space, then help you make the most of it. New luxuries begin with a new wheel design and even more standard features.

Not new is an unrivaled combination of performance and panache that has produced an automobile for the ages. Again. The 2009 Mercedes-Benz S-Class.

S 550 shown at right in Iridium Silver metallic paint.
Please see page 49 for Endnotes.





S 550 shown in Iridium Silver metallic paint.

Car companies make cars. We make history.

The world's first automobile. The supercharged engine, diesel passenger car and fuel injection. The crumple zone, multilink rear suspension and pop-up roll bar—all were created by Mercedes-Benz. Yet while these and other Mercedes-Benz firsts read like a history of the automobile, just as important are recent innovations—advances like PRE-SAFE® and BlueTEC, the world's cleanest diesel engine—that point to its future.



Mercedes-Benz Firsts

- 1886 The first car
- 1911 The multivalve engine
- 1921 The supercharged engine
- 1931 Independent suspension
- 1936 The first diesel passenger car
- 1951 The crumple zone
- 1954 Fuel injection
- 1971 A patent for the air bag
- 1982 Multilink rear suspension
- 1983 Seat-belt Emergency Tensioning Device
- 1989 The pop-up roll bar
- 1990 4-wheel Electronic Traction System
- 1995 Electronic Stability Program (ESP®)
- 1996 Panorama Sunroof
- 1997 Low-emission SUV
- 1997 Brake Assist
- 1997 BabySmart™ system
- 1997 SmartKey
- 1997 Touch Shift
- 1998 Window Curtain Air Bags
- 1998 10-way air-bag protection
- 1999 Active Body Control
- 1999 AIRMATIC Semi-Active Suspension
- 2000 DISTRONIC Adaptive Cruise Control
- 2001 KEYLESS-GO
- 2002 Drive-Dynamic multicontour front seats
- 2002 PRE-SAFE
- 2002 Bi-turbo 5.5-liter V-12 engine
- 2002 Automatic brake drying
- 2002 Predictive Brake Priming
- 2003 7-speed automatic transmission
- 2004 High-output, high-efficiency V-6 engine
- 2006 BlueTEC
- 2006 Night View Assist
- 2007 AGILITY CONTROL suspension

Handling so revolutionary, we were able to pass ourselves.

The better the car, the more quickly the desires of the driver become the actions of the vehicle. In the S-Class, that translation is nearly immediate. At higher speeds,² the S 550's AIRMATIC Semi-Active Suspension lowers the car, reducing the distance to the road and improving aerodynamics and fuel efficiency. And innovations like available Active Body Control, which helps keep the car level during performance maneuvers, along with a 5-link rear suspension reinforce this luxury sedan's strong connection to the road. And its racing heritage.

S 600 shown at right in Capri Blue metallic paint. Please see page 49 for Endnotes.

AIRMATIC Semi-Active Suspension

Adjusts to changing speeds, road conditions and cargo or passenger weight with electronically controlled air springs for a level, comfortable ride.³





4MATIC.
A special relationship with
the road gets even closer.

One of the world's most innovative all-wheel-drive systems? It's a difficult claim to prove until you have to prove yourself in a difficult situation. Ice, snow, sleet, rain or all four at once, and instantly 4MATIC with 4-wheel Electronic Traction System delivers power to the wheel or wheels with grip. Coupled with our Electronic Stability Program (ESP®)—technology that monitors wheelspin to help keep the car on course—4MATIC is just one more Mercedes-Benz innovation that offers incredible control⁴ And confidence.

S 550 shown at right in Iridium Silver metallic paint with optional 4MATIC all-wheel drive and AMG Sport Package.
Please see page 49 for Endnotes.

Luxury car to Formula 1 car in 5.4 seconds!

Under the powerfully sleek hoods of the S-Class, you'll find advanced engines cast from aluminum alloy—engines that have carved their place in engineering history. The S 550's 5.5-liter V-8 rockets the 7-speed sedan from 0 to 60 mph in a mere 5.4 seconds! The bi-turbo V-12 found in the S 600 offers 612 lb-ft of torque and 510 horsepower. And for those who want more of, well, more, there's the S 63 AMG. 518 horsepower. 465 lb-ft of torque. Zero to 60 in a seemingly impossible 4.5 seconds!

S 550

ENGINE
5.5-liter V-8

NET POWER
382 hp @ 6,000 rpm

NET TORQUE
391 lb-ft @ 2,800-4,800 rpm

ACCELERATION
0-60 mph in 5.4 seconds¹

S 600

ENGINE
5.5-liter V-12

NET POWER
510 hp @ 5,000 rpm

NET TORQUE
612 lb-ft @ 1,800-3,500 rpm

ACCELERATION
0-60 mph in 4.5 seconds¹

S 63 AMG

ENGINE
6.3-liter V-8

NET POWER
518 hp @ 6,800 rpm

NET TORQUE
465 lb-ft @ 5,200 rpm

ACCELERATION
0-60 mph in 4.5 seconds¹



Preparing for
the unthinkable
by thinking of just
about everything.

Every accident comes with plenty of hindsight. In the S-Class, accidents also come with foresight – foresight provided by Mercedes-Benz PRE-SAFE.[®] Should the vehicle's sensors detect motion that indicates a possible collision, the S-Class prepares, adjusting the front passenger seat to a more favorable position, tensioning the front seat belts for further protection and, if necessary, automatically raising the windows⁵ and closing the sunroof.⁶ After an accident, the S-Class shuts off the engine, cuts the fuel supply, unlocks the doors and automatically calls an Emergency Response Center.⁷ PRE-SAFE. More proof that our lead in the area of safety is getting longer.

S 550 shown at right in Capri Blue metallic paint.
Please see page 49 for Endnotes.



Reinforces critical areas of the body and frame for safer construction and more precise handling.

Ultra-high-strength steel

Indicators that rescue workers can use to cut the pillars in order to remove the roof without cutting into any undeployed safety systems.

Cutting points

Lift off the accelerator quickly, and the brake pads move closer to the discs for faster response.⁸

Predictive Brake Priming

When the wipers are on, the brake pads periodically contact the discs to keep them dry. And more effective.⁸

Brake Drying

Please see page 49 for Endnotes.



Parking Guidance

This radar-based advance helps you not only find suitably sized parallel-parking spaces, but maneuver into them.

Electronic Parking Brake

When activated, this feature automatically disengages any time you shift into Drive or Reverse.

Sun sensor

When climate controls are on Auto and the sun sensor detects more sunlight on one side of the cabin, it increases cooling in that section accordingly.

SmartKey

Enjoy remote locking and unlocking of doors, closing and opening of windows, and more.

The world's finest luxury sedan, well before you turn the key.

An S-Class key is a prized possession. Not only does it unleash some of the most powerful engines on the road, it also unlocks a world of unmatched luxury and craftsmanship. That world is bathed in a pleasing ambient light, specially designed to help you see better at night. Hand-polished Burl Walnut wood trim, a hand-stitched wood/leather steering wheel and leather front seats with four levels of massage are some of the pleasures you'll see and feel. And just the beginning of a sensuous experience where attention to detail is key.

S 550 shown with Savanna/Cashmere leather interior and optional Premium 2 Package.



The entertainment system worthy of your study. Now in your car.

The S-Class COMAND system easily and intuitively connects you to a wealth of entertainment options. A vivid in-dash 8" color-LCD display, conveniently located in your line of sight, controls everything from the 600-watt harman/kardon LOGIC7® digital surround-sound system to climate-zone settings. Voice commands access the 20-gigabyte hard-drive-based Navigation System's information – things like the shortest routes or the best restaurants. And, should over 130 stations of SIRIUS® Satellite Radio programming⁹ not suffice, a memory card slot allows you to import, customize and control your music through the COMAND system. All this – as if driving the S-Class weren't entertaining enough.

Please see page 49 for Endnotes.

- 600 watts and a theater-quality 5.1-channel amplifier pipe music and more through 14 strategically placed speakers. harman/kardon LOGIC7 digital surround-sound system
- Automatically adjusts speaker output based on ambient noise to deliver the optimum sound level. Digital Dynamic Volume Control
- Play a wide variety of formats such as memory card, SD and Compact Flash. PCMCIA slot
- Reach your destination, and points of interest along the way, via this 20-gigabyte hard-drive-based system.¹⁰ Navigation System
- Enjoy hands-free communication, navigation and other features simply by speaking up. Voice Control

Seeing what others can't? It wouldn't be the first time.

Since our beginnings, Mercedes-Benz has looked far down the road. Take Night View Assist, for example. Using infrared technology, it pierces the dark up to 500 feet ahead, crisply displaying the road on a high-resolution screen!¹ Other “visionary” advances include optional Blind Spot Assist, a system that uses both visual and audio cues to warn if a vehicle has been detected in your blind spot. Parking Guidance is a helpful tool that automatically judges the size of a parallel-parking space and helps guide you into it. And if history is any guide, these won't be the last Mercedes-Benz advances.





5.5-liter V-8 engine
AIRMATIC Semi-Active Suspension
Bi-Xenon headlamps with Active Curve Illumination
Heated and Active Ventilated Seats



S 550 |

The interior's ambient lighting reveals Burl Walnut wood trim and rich leather, setting the stage for the innovation, comfort and performance that are the S 550. The COMAND system intuitively allows you to control multiple climate zones, the harman/kardon LOGIC7® digital surround-sound system and numerous other features. Standard Heated and Active Ventilated Seats comfort with warm or cool air and nearly unlimited positions. Turn the key and a daunting 5.5-liter V-8 engine answers, while an industry-leading AIRMATIC Semi-Active Suspension offers incredible performance and complete confidence. Confidence furthered by a safety system so advanced, it can prepare the vehicle should it sense a possible accident. The Mercedes-Benz S 550 Sedan.

S 550 shown at left in Andorite Grey metallic paint with optional Panorama Sunroof and DISTRONIC PLUS Adaptive Cruise Control.

S 550 shown above right in Barolo Red metallic paint.

| S 600

Innovation. Elegance. Ferocity. Meet the S 600. Front seats heat, cool and massage. Entertainment, rich with innovation, offers SIRIUS Satellite Radio via a harman/kardon LOGIC7® digital surround-sound system. Night View Assist offers a clear view of obstacles 500 feet ahead in near-complete darkness. And then there's power. Tremendous power. A 510-horsepower, bi-turbo V-12 engine rockets the car from 0 to 60 mph in just 4.5 seconds, while innovations like Active Body Control, enable the driver to turn that power into amazing performance. All while seated under a grand and graceful Panorama Sunroof. The Mercedes-Benz S 600.

S 600 shown at right in Pewter metallic paint.
Please see page 49 for Endnotes.



5.5-liter bi-turbo V-12 engine
Active Body Control suspension
DISTRONIC PLUS Adaptive Cruise Control
Drive-Dynamic multicontour front seats



Absolute power
excites absolutely.

S 63 AMG

Drivetrain

Engine AMG-built DOHC 32-valve V-8
Power 518 hp @ 6,800 rpm
Torque 465 lb-ft @ 5,200 rpm
Displacement 6,208-cc
Compression 11.3:1
Transmission 7-speed automatic with
AMG SPEEDSHIFT.[™]
Acceleration 0-60 mph in 4.5 seconds!

Chassis

Suspension AMG-enhanced Active Body Control.
Wheels 20" AMG 5-spoke, 8.5x20/
9.5x20 staggered.^{1,2}
Brakes 15.4" front - 14.4" rear, compound
perforated/ventilated discs.

Luxury car at rest. Supercar at speed. The S 63 AMG. The numbers speak volumes: 518 horsepower, 465 lb-ft of torque, 4.5¹ to 60, all delivered by a hand-built, 8-cylinder masterpiece. Active Body Control keeps the car poised and confident during the most spirited maneuvers, while dual twin-sliding front calipers set on massive rotors shorten braking time. And in the cabin, an IWC-design analog clock and Drive-Dynamic multicontour front seats are just the beginning of the pleasures.

S 63 AMG shown at left in Iridium Silver metallic paint.
Please see page 49 for Endnotes.



5.5-liter V-8 engine

One of our most advanced engines generates 382 horsepower and 391 lb-ft of torque, with an amazing 75% of peak torque available at just 1,000 rpm. To help reduce engine weight and increase durability, the engine block is made of cast aluminum with a solid bedplate, an ideal construction for performance. Indeed, the engine's smooth, immediate power delivery whisks the S 550 from 0 to 60 mph in just 5.4 seconds.¹

Bi-turbo V-12 engine

The S 600 racks up such high numbers—510 horsepower, 612 lb-ft of peak torque between 1,800–3,500 rpm and a 0-to-60 time of just 4.5 seconds¹—because its powerplant infuses brawn with brilliance. The staggering low-end torque stems from two compact turbochargers, which, with an optimized turbine, also nearly eliminate “turbo lag.” And two liquid-to-air intercoolers yield a charge for more powerful combustion—and more powerful performance.

AMG 6.3-liter V-8 engine

The most powerful naturally aspirated V-8 in our lineup has been mated to a 7-speed automatic transmission with AMG SPEEDSHIFT™ for ready access to that enormous strength. Feel a rush of euphoria as the engine develops a massive 518 horsepower and 465 lb-ft of torque to propel the S 63 AMG from 0 to 60 in 4.5 seconds.¹ And like all AMG engines, each is hand-built and signed by a single master technician.

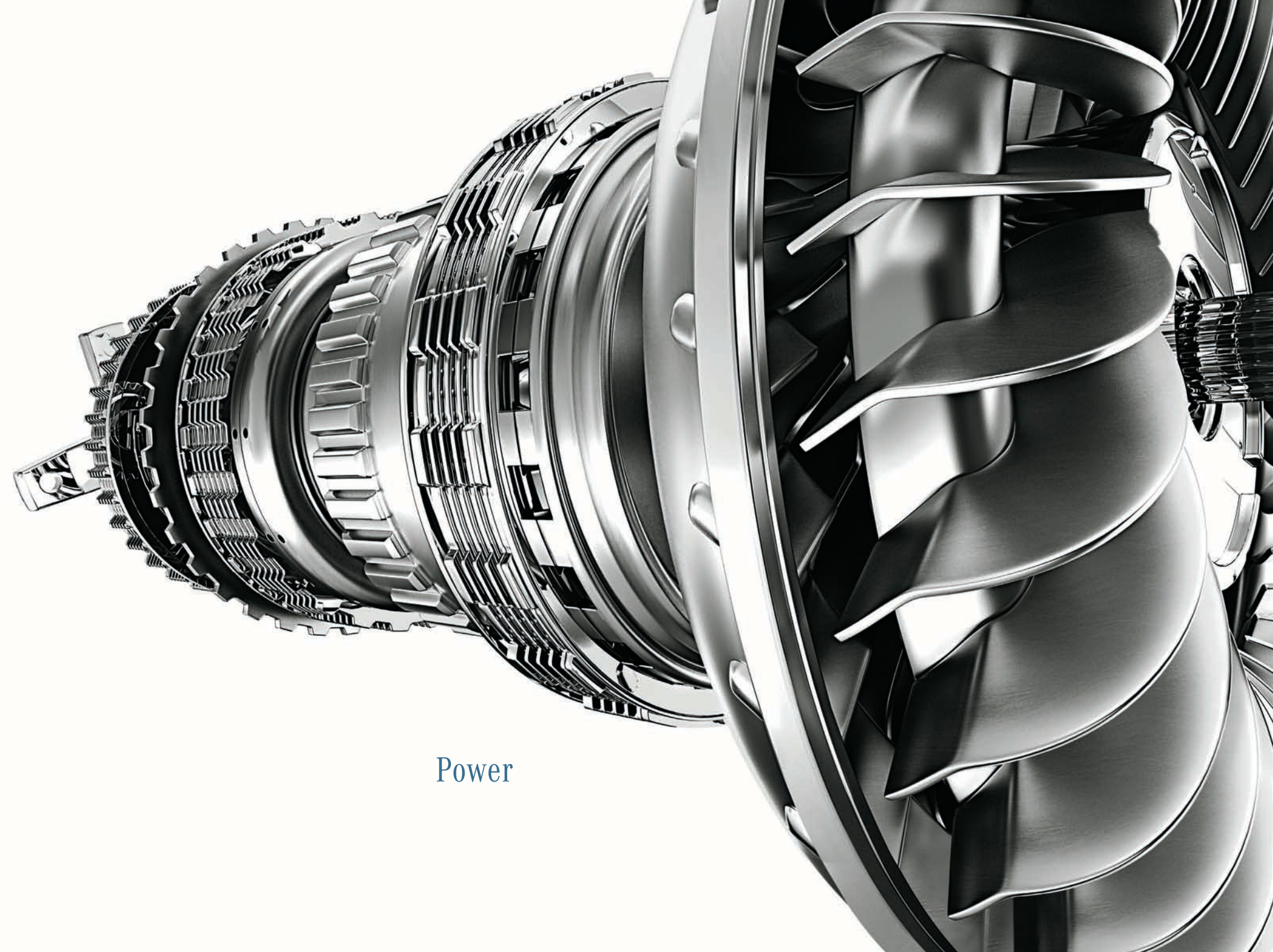


7-speed automatic transmission

S 550 Sedans are the only cars in their class to have a 7-speed automatic transmission as standard equipment. A wide range of closely spaced gears delivers the ideal gear ratio for virtually every driving condition, which means smoother cruising and immediate response for acceleration and passing, and even improved fuel efficiency on the highway. With the 7-speed automatic with AMG SPEEDSHIFT in the S 63 AMG, you can change gears rapidly using AMG shift paddles on the steering wheel and choose from one of three driving modes (S for Sport, C for Comfort and M for Manual). And, available on all S-Class Sedans, the Touch Shift feature lets you select gears by using the shift paddles on the back of the steering wheel.

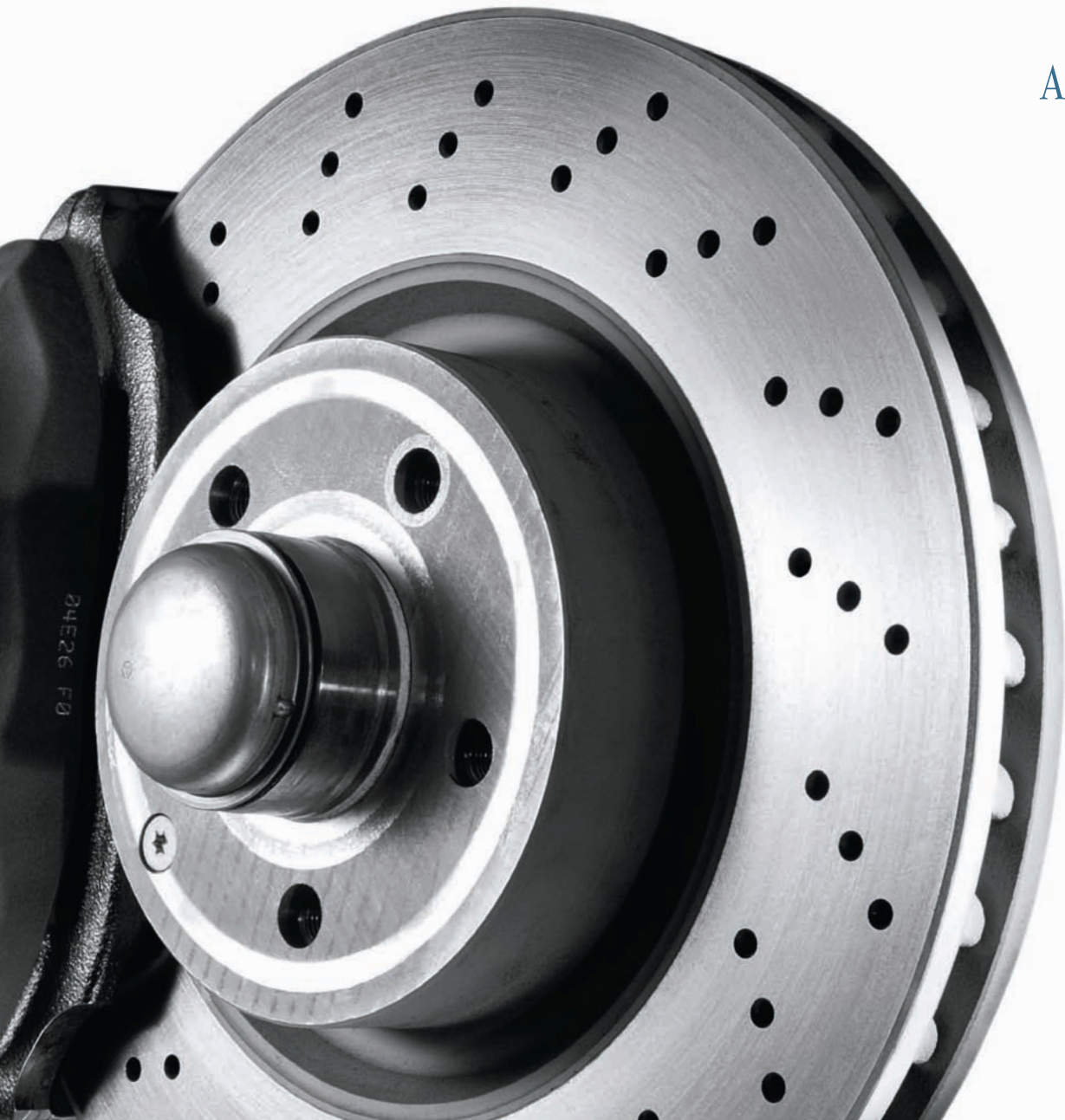
5-speed automatic transmission

The S 600's 5-speed automatic was designed to handle the massive torque generated by the engine. This gearbox is even driver-adaptive: it learns how you like to drive and adjusts its shift points accordingly.



Power

Agility



Brakes ●

Enjoy strong, controlled stopping power courtesy of large, cross-drilled front and internally ventilated rear disc brakes. One of their many features is Hill-Start Assist, which momentarily maintains braking pressure when the driver releases the brakes on an incline to briefly hold the vehicle in place. The S 63 AMG also features 15.4" front and 14.4" rear compound disc brakes and dual twin-sliding front calipers.⁸
Standard all models.

4MATIC all-wheel drive with 4-wheel Electronic Traction System (4-ETS) ○ –

For optimum traction, even in slippery conditions, this all-wheel-drive system incorporates our advanced 4-wheel Electronic Traction System. 4-ETS can get you going even when only one wheel has grip. Sensors at each wheel monitor traction. If one or more wheels start to slip, 4-ETS brakes those wheels individually and maintains power to the wheel or wheels with traction, keeping you cruising along.⁴
Optional S 550. Not available S 600 and S 63 AMG.

Electronic Parking Brake ●

The convenient Electronic Parking Brake can be engaged or disengaged at the touch of a button. It also automatically disengages when you shift into gear and apply the gas. This feature increases usable footwell space by eliminating the need for a mechanical brake pedal or handle.
Standard all models.



AIRMATIC Semi-Active Suspension ● –

For a balanced, comfortable ride, the AIRMATIC system employs electronically controlled air springs that adjust to changing driving conditions. The system also lowers the ride height at higher speeds for improved aerodynamics. To help compensate for additional cargo or passenger weight, AIRMATIC automatically levels the vehicle.
Standard S 550. Not available S 600 and S 63 AMG.

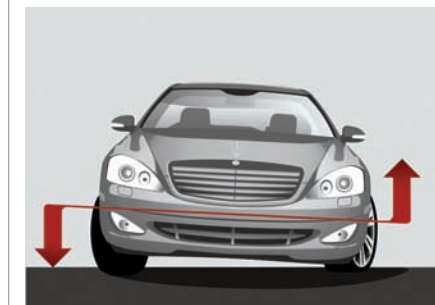
Adaptive Damping System (ADS-II) ● –

Part of the AIRMATIC Semi-Active Suspension, our Adaptive Damping System lets you tailor your driving experience with two selectable driving modes—one for Sport and one for Comfort—at the touch of a button. ADS-II continually optimizes ride and handling by individually adjusting each wheel's shock-absorption rate every time the wheel changes its direction of up-down travel.
Standard S 550. Not available S 600 and S 63 AMG.



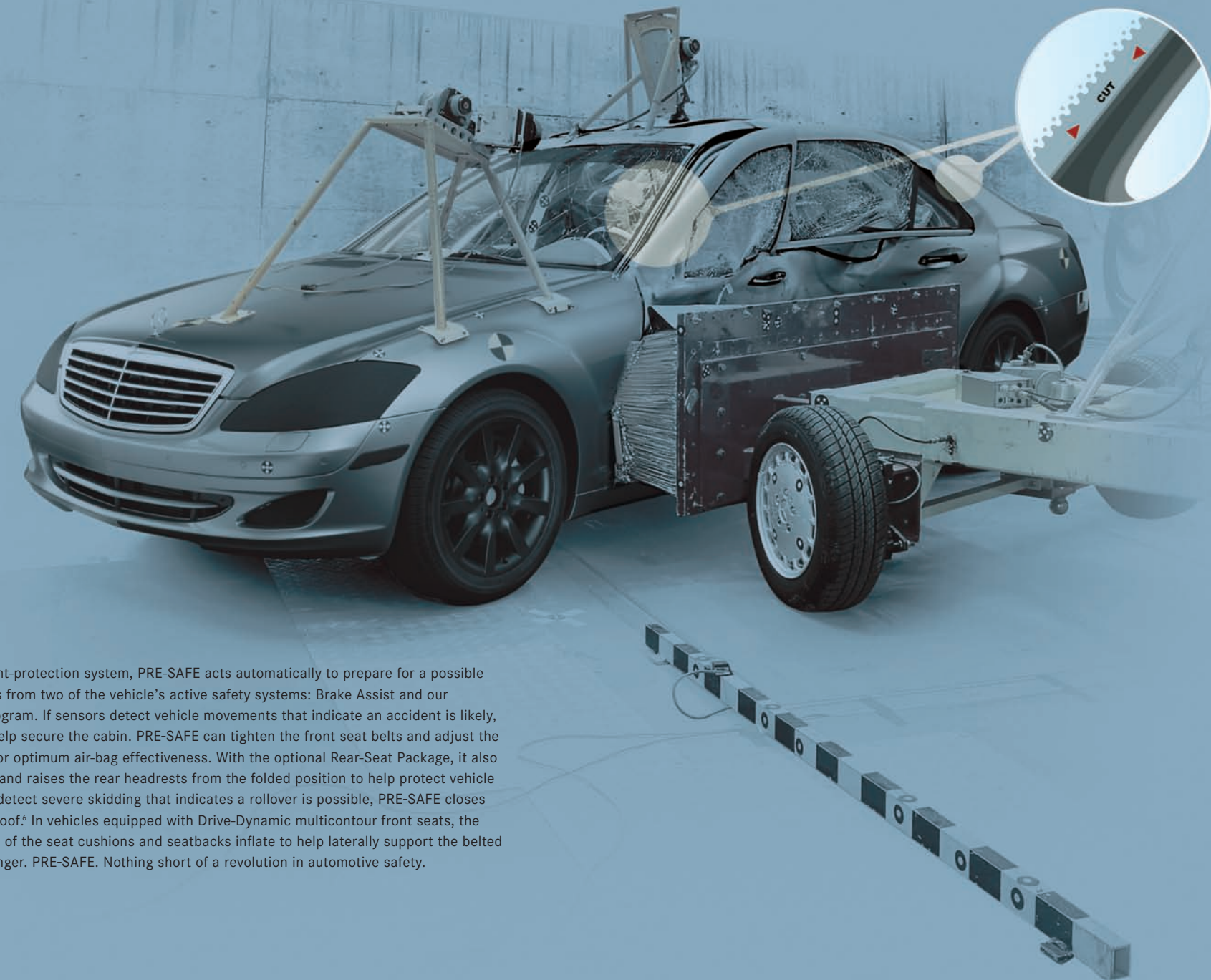
Multilink suspension ●

It's the key to the exceptional poise and control of the S-Class. The 5-arm rear multilink design—a Mercedes-Benz innovation—controls rear-wheel movement with outstanding precision. For more dynamic handling, the front axle assembly, front suspension and steering gear are all preassembled along with the engine and transmission on an extraordinarily rigid steel subframe.
Standard all models.



Active Body Control (ABC) ● ○ –

Arguably the most advanced suspension system in production, Active Body Control provides an excellent balance of ride comfort and handling while virtually eliminating bodyroll during cornering. A series of sensors and electronically controlled high-pressure hydraulics counteracts the effects of roll, vibration, pitch, dive and squat. And in a turn, ABC stiffens the outer suspension and lowers the inner suspension for improved control and passenger comfort.
Standard S 600 and S 63 AMG. Optional S 550. Not available S 550 4MATIC.



PRE-SAFE® ●

Our predictive occupant-protection system, PRE-SAFE acts automatically to prepare for a possible accident using sensors from two of the vehicle's active safety systems: Brake Assist and our Electronic Stability Program. If sensors detect vehicle movements that indicate an accident is likely, it takes measures to help secure the cabin. PRE-SAFE can tighten the front seat belts and adjust the front passenger seat for optimum air-bag effectiveness. With the optional Rear-Seat Package, it also adjusts the rear seats and raises the rear headrests from the folded position to help protect vehicle occupants. If sensors detect severe skidding that indicates a rollover is possible, PRE-SAFE closes the windows⁵ and sunroof.⁶ In vehicles equipped with Drive-Dynamic multicontour front seats, the outboard air chambers of the seat cushions and seatbacks inflate to help laterally support the belted driver and front passenger. PRE-SAFE. Nothing short of a revolution in automotive safety.

Standard all models.

Protection

Electronic Stability Program (ESP®) ●

This advance continually monitors your vehicle's motion to help keep you going in your intended direction. If it detects wheel slip, severe understeer (plowing) or oversteer (fishtailing), ESP can brake individual wheels and reduce engine power to help bring the vehicle under control. It significantly helps you maintain control during accident-avoidance maneuvers.⁴

Standard all models.

Brake Assist (BAS), Brake Assist PLUS (BAS PLUS) and PRE-SAFE® Brake ●

Research shows that drivers seldom apply the brakes hard enough, soon enough in emergency situations. BAS monitors pedal application speed to sense emergency braking and deliver maximum stopping power. Vehicles with DISTRONIC PLUS Adaptive Cruise Control also offer BAS PLUS and PRE-SAFE Brake. PRE-SAFE Brake features BAS PLUS, which uses DISTRONIC radar technology to automatically prime the brakes for hard braking by the driver. When closing speed to a detected vehicle ahead suggests an imminent collision, PRE-SAFE Brake can automatically initiate up to 40% of the available stopping power regardless of whether DISTRONIC PLUS is on—or even if the driver is not on the brake.¹⁴ PRE-SAFE brake sensors can also activate PRE-SAFE systems that prepare the cabin for a likely collision. BAS PLUS also readies the brakes so that full power is available the moment you step on the pedal.⁸

Standard all models.

Blind Spot Assist ● ○

What would you give to know that something is in your blind spot? A moment of your time is all that's needed. This breakthrough option uses radar sensors to monitor that area, and as soon as another vehicle is sensed to be entering it, a red hazard signal lights up in the exterior mirrors. And if you use your signal to move over and a vehicle is in your blind spot, an audio warning sounds as well. Drive with more security; pass with more confidence. Automatically, of course.

Standard S 600. Optional S 550 and S 63 AMG.

Cutting points ●

To aid rescue workers, the S-Class windshield and rear window are marked with cutting points for the A and C pillars. This feature helps rescue workers identify areas in which it is safe to use hydraulic tools to cut away the roof of the vehicle without cutting through any undeployed safety systems.

Standard all models.

Body structure ●

A range of precision safety elements work together to protect you and your passengers in the event of a collision. While High-Strength and Ultra-High-Strength/Low-Alloy steel in important areas of the vehicle helps to form an exceptionally rigid structure, advanced front and rear crumple zones deform progressively to help absorb the energy of an impact. A front bulkhead also helps channel some of the forces of a frontal impact under, over and around the cabin.

Standard all models.

10-way air-bag protection ●

The S-Class features the 10-way protection of an 8-air-bag system. It includes dual-stage front air bags, front and rear side-impact air bags and full-length Window Curtain Air Bags. The Window Curtain Air Bags deploy along the front and rear windows on the affected side to help protect outboard occupants from head injury and broken glass in certain side impacts or rollovers that exceed the deployment threshold.¹⁵

Standard all models

Amenities



Bi-Xenon headlamps with Active Curve Illumination ● ○

See better around corners at night thanks to these advances that turn along with your steering wheel. They provide a clearer view into corners by increasing usable illumination by up to 90% over conventional fixed headlamps. Bi-Xenon headlamps deliver superior visibility over halogen headlamps because their brighter, whiter light is much closer to natural sunlight.

Standard all models.



Rear View Camera ● ○

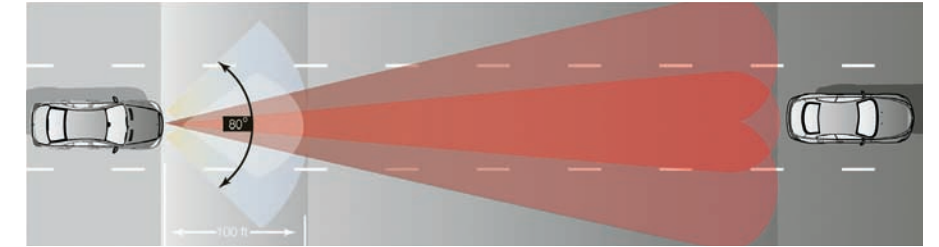
Now parallel park or back into a parking space more easily. When you're in Reverse, a wide-angle camera mounted discreetly in the trunk lid captures an image of what's behind your vehicle and displays it on the COMAND screen.¹⁶

Standard S 600 and S 63 AMG. Optional S 550.

DISTRONIC PLUS Adaptive Cruise Control ● ○

This radar-based advance monitors the vehicle ahead and adjusts your speed to help maintain your chosen following distance. Long journeys become more pleasurable, as there is less need to adjust the cruise control setting. And in stop-and-go traffic, DISTRONIC PLUS can automatically keep pace, then start you moving again with a tap of the accelerator.¹⁷ Should the vehicle ahead slow to a complete stop, DISTRONIC PLUS uses up to 40% of the vehicle's braking power to slow your vehicle to a stop—automatically. If the vehicle ahead suddenly slows or abruptly stops and calculated closing speed indicates that you haven't applied sufficient braking power, the DISTRONIC Proximity Warning System issues an audiovisual warning.¹⁸

Standard S 600. Optional S 550 and S 63 AMG.



Parking Guidance ● ○

Stop the endless search for parallel-parking spaces via this all-new option. Parking Guidance uses DISTRONIC PLUS sensors to help you see if available spots can accommodate your vehicle. It then displays steering instructions to make the space yours. Put simply, this advance minimizes the time spent circling your destination—and maximizes your time enjoying it.

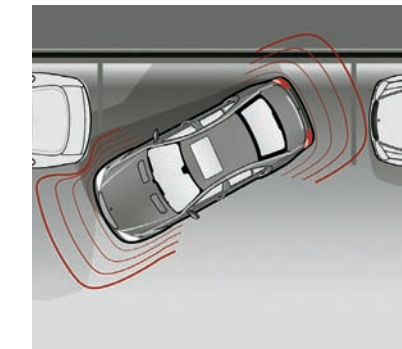
Standard S 600. Optional S 550 and S 63 AMG.



PARKTRONIC system ● ○

When parking, ultrasonic sensors in the front and rear bumpers detect nearby objects within the system's field of view. Audible signals and illuminated displays, visible in both the instrument cluster and rearview mirror, help you maneuver with confidence. This system helps you avoid obstacles that might be outside your field of vision when parking in tight spaces. (The park assist feature is included with standard DISTRONIC PLUS Adaptive Cruise Control on the S 600.)

Standard S 600 and S 63 AMG. Optional S 550.



Night View Assist ● ○

Using infrared technology, this innovation is activated when your low-beam headlamps are on and can detect objects nearly 500 feet ahead in darkness. When activated, it displays the captured field on a black-and-white screen in the instrument cluster. Unlike other systems that identify only warm objects like animals but not cold ones such as debris, ours detects both. And with the image on a high-resolution screen, you always get a clear, sharp picture of what's ahead.¹¹

Standard S 600. Optional S 550 and S 63 AMG.

KEYLESS-GO ● ○

A leap in ease and efficiency, this option lets you open or lock any door or the trunk while leaving your vehicle's SmartKey in your pocket. To start the vehicle, simply step on the brake pedal and push the Start button, inserted into the vehicle's ignition. You can also start the vehicle in the conventional way by removing the Start/Stop button and inserting the SmartKey in the ignition.

Standard S 600 and S 63 AMG. Optional S 550.



COMAND system ●

Take charge of your S-Class with a system that's both advanced and intuitive. COMAND offers precise control of the audio, climate, telephone and Navigation systems, front-seat adjustments and numerous vehicle settings on an 8" color-LCD widescreen. This vivid display is conveniently located within your line of sight to help reduce the need to look away from the road. Also enjoy access to most audio features, the Hands-Free Communication System and the Navigation System via Voice Control.

Standard all models.

harman/kardon LOGIC7® digital surround-sound system ●

This digital surround-sound system fills the cabin with 600 watts of beautifully balanced sound. Fourteen optimally placed speakers deliver an enthralling surround-sound experience from MP3s, SIRIUS Satellite Radio, the standard 6-disc CD/DVD changer and even discs in DVD-Audio and DTS formats. An integrated microphone monitors vehicle acoustics and adjusts frequency response to deliver the optimum sound experience.

Standard all models.

Memory card slot ●

Bring aboard your digital music with this PCMCIA multimedia slot. Just transfer digital audio files from your PC onto a widely available memory card and insert it into your S-Class. Scroll through playlists and song titles via the COMAND system's graphical user interface. With an adapter, you can even use many other memory card formats such as SD and Compact Flash. (PCMCIA adapter card required. Sold separately.)

Standard all models.



Navigation System ●

Using GPS technology and a 20-gigabyte hard drive to store maps, Points Of Interest and more, this virtual copilot provides detailed driving directions with remarkable speed and a friendly voice. Say or enter your destination. Then see gas stations, hotels, restaurants and Mercedes-Benz dealerships along your route on the COMAND system's large color-LCD screen. Data for the contiguous U.S., Canada and Oahu, Hawaii comes standard, with periodic updates available at your authorized Mercedes-Benz dealer.¹⁰

Standard all models.

Hands-Free Communication System ●

Make calls, receive calls and even access select phone books¹⁹ through the COMAND system in one of two easy ways. Using an approved compatible phone,²⁰ you can connect to the Hands-Free Communication System via a range of accessory Multi-Handset Interface (MHI) cradles or an accessory Bluetooth® interface module.²¹ With the cradle, your phone charges itself and connects to the vehicle's external antenna, while the Bluetooth interface services your needs wirelessly. When your Bluetooth-compatible phone is synched up to the system, just leave your phone in your pocket and enjoy hands-free conversations over the sound system.²² Bluetooth-compatible phone, Bluetooth interface module and MHI cradles sold separately.²³ Please see your dealer for details.

Standard all models.

SIRIUS Satellite Radio ●

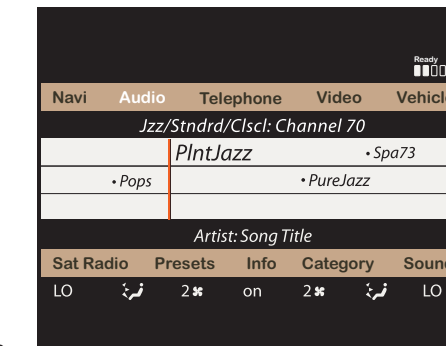
Enjoy a 6-month subscription to SIRIUS with over 130 channels including 69 channels of 100% commercial-free music, plus news, talk, entertainment, traffic, weather and data. SIRIUS is also home to live play-by-play broadcasts of the biggest sports—NFL, NASCAR®, NBA and games from over 150 college sports teams. SIRIUS is sure to be one of your favorite cabin appointments.²⁴

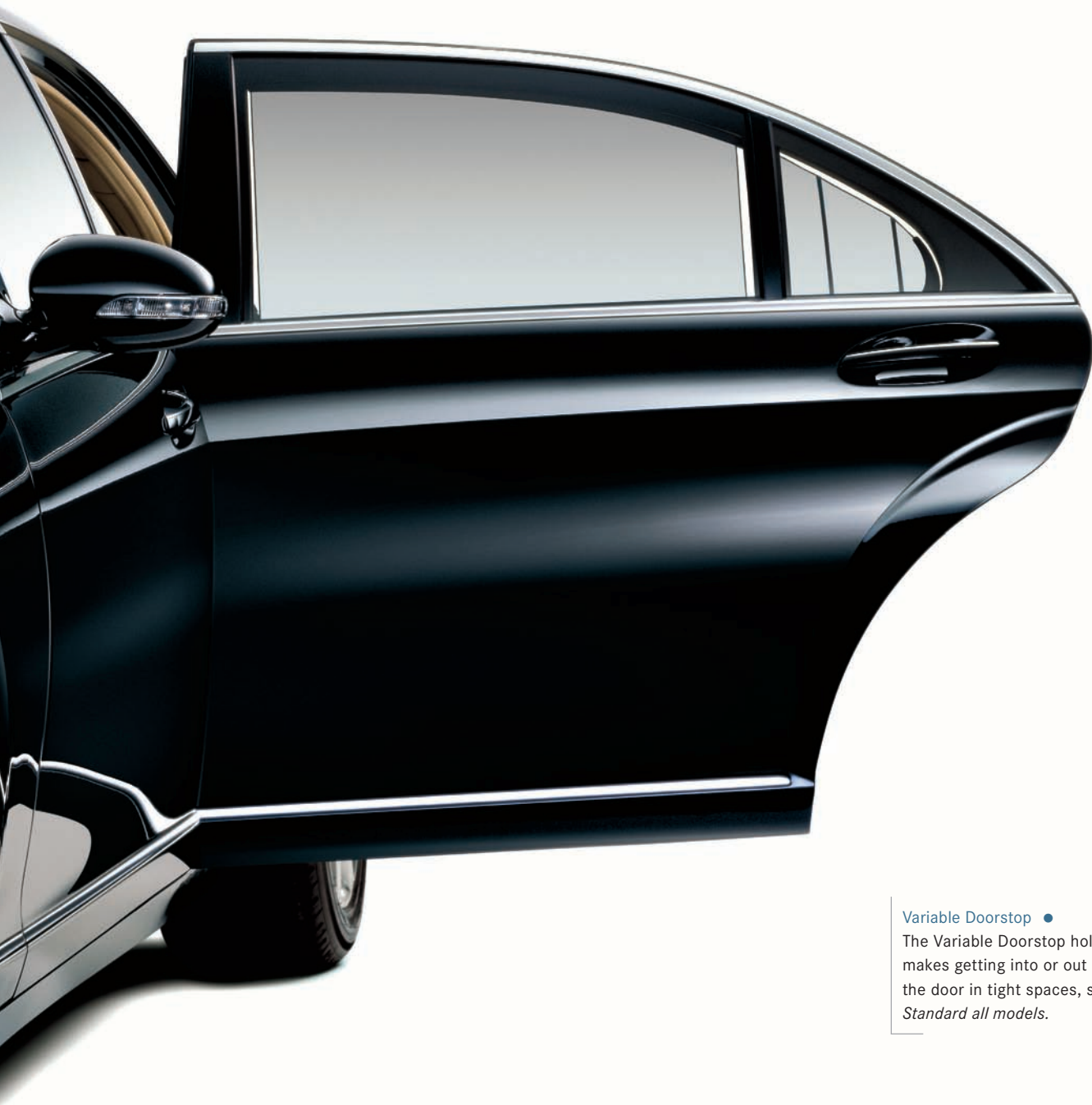
Standard all models.

iPod® Integration Kit ○

Bring your music wherever you drive, thanks to the seamless integration of your iPod into the audio system of your vehicle. The steering wheel lets you view the track information display and control iPod buttons like Volume, Select and Change Menu. Better yet, your iPod also charges while it's playing.²⁵

Optional all models.





Variable Doorstop ●

The Variable Doorstop holds the door open at virtually any point in its swing range. This feature makes getting into or out of the car on hills easier. It also gives you more control when opening the door in tight spaces, such as parking spots or garages.

Standard all models.

Rear-Seat Package ● ○

The Rear-Seat Package includes 8-way power rear outboard seats with heating, ventilation and 4-zone climate control. This enables rear outboard passengers to adjust their seats to a variety of comfortable positions. The 4-zone climate control system is a luxurious touch that enables occupants to create four separate climate zones according to their preferences.

Standard S 600. Optional S 550 and S 63 AMG.

Climate control ●

The dual-zone climate control system, standard on the S 550 and S 63 AMG, delivers comfortable and precise heating and cooling to the cabin. When set to the Auto position, this system can even monitor sunlight intensity and seat occupancy, thus determining which side of the car requires greater cooling and adjusting the temperature and airflow accordingly. An enhanced 4-zone climate control system comes standard on the S 600 (optional on the S 550 and S 63 AMG). It fine-tunes the conditions even further so that all passengers can create their individual comfort zones.

Standard all models.



Electronic Trunk Closer ●

This feature allows the driver to fully open and close the trunk via a switch on the driver's interior door panel. You can also close the trunk lid by pressing a button on its underside or open it with the SmartKey remote.

Standard all models.

Ambient lighting ●

Find controls or items at night easily with adjustable fiber-optic lighting that bathes the S-Class cabin in a soft amber glow, specifically chosen to help reduce eyestrain. It also prevents you from getting too accustomed to the darkness, thus reducing the blinding effect of oncoming traffic. When the door is opened, the adjustable ambient lighting is at its brightest; it then dims as the vehicle drives off.

Standard all models.

Panorama Sunroof ● ○

A large dual-panel glass Panorama Sunroof provides both front- and rear-seat passengers with a view of the sky. The front panel can either tilt open or slide over the rear panel to open completely. Independently operated interior power sunshades cover both glass roof panels.

Standard S 600. Optional S 550 and S 63 AMG.

Drive-Dynamic multicontour front seats with 4-stage massage function ● ○

Treat yourself to an optimum seating position on every drive, courtesy of 11 adjustable pneumatic chambers in the seat. Then feel four levels of massage stimulate your back muscles. They not only soothe, they help fight fatigue. The system even adjusts air chambers within the seat, to support you through curves and turns—or even in the event of a potential accident.

Standard S 600 and S 63 AMG. Optional S 550.

Heated and Active Ventilated Seats ●

Three levels of heating and cooling are available for front and rear outboard seats. Active Ventilated Seats are designed to keep you cool during warmer months by gently circulating air through perforations in the seat and backrest, which also helps eliminate perspiration buildup. Using both the ventilation and heating features of the seats simultaneously can help keep you warm and dry on cold and rainy days.

Standard all models.



Accessories

A Mercedes-Benz is the definition of luxury and performance. It can also be a statement of personal style. So take a moment to survey our genuine accessories. Each is designed, engineered and tested to the same exacting standards as your vehicle. Which is to say, to your own high standards.



Light-alloy wheels

Whether it's the uncompromising 18" 5-spoke wheel in high-shine polish or the striking 20" wheel that flaunts a two-tone design, both come equipped with high-performance tires to elevate every drive.



Chrome accents

Make your vehicle even more distinctive with our set of chrome headlamp rings, available in sets of two. Our exterior chrome mirror housings, two per set, complement the range of coordinating exterior refinements. Help protect your finish from scratches and add yet another touch of style with a set of four chrome door-handle inserts.



Hands-Free Communication System and Multi-Handset Interface (MHI) cradle

In conjunction with your vehicle's pre-wired Hands-Free Communication System, the MHI cradle helps you enjoy all the benefits of hands-free calling, as well as hands-free audio and navigation use. Or consider the Bluetooth® interface module, which allows you to make and receive calls, and even access select phone books,¹⁹ without taking your phone out of your pocket.²²



Illuminated door sills

Available in sets of four, these brushed stainless-steel door sill panels say "Mercedes-Benz" in more ways than one. Radiantly.



Child safety seats

For infants, toddlers and small children alike, our child safety seats deliver comfort and protection in equal measure. While the BabySafe Plus Infant Seat accommodates children up to 29 lbs, the Duo Plus Toddler Seat holds those between 20 and 40 lbs and our KID Booster Seat supports those between 40 and 79 lbs. All three feature padded support, adjustable designs and a removable fabric cover for washing. This way the whole family enjoys the safest and most pleasurable drive possible.

Service & Support

Mercedes-Benz Tele Aid^a

Three buttons put a multitude of services at system subscribers' fingertips: emergency response (SOS button), roadside assistance (Wrench button) and even information services (*i*-button).^b Enhance your sense of security with Remote Door Unlock and Stolen Vehicle Recovery. Enhance your control with features like real-time traffic updates. With an active Mercedes-Benz Tele Aid subscription, you may be eligible for a discount from your insurance provider.

Mercedes-Benz Search & Send

The Internet is a great tool for planning trips and vacations, and Search & Send makes it even more effective. Use Yahoo!® Local Maps and Google™ Maps to plan routes and attractions, then send that information directly to your vehicle's Navigation System. Information can also be sent to you while you're traveling, so friends can forward tips on great things to do and see, or the best way to go.

Mercedes-Benz Concierge

Expand your privileges with access to a Personal Concierge that fulfills your requests for nearly "anything, anytime, anywhere" and an Online Concierge for accessing your Personal Concierge via your computer or PDA wherever Internet access is available, as well as Traffic Information^c and Route Assistance.^d

24-hour Roadside Assistance

The first of its kind and still the only one that remains in effect for the life of the vehicle. Our Roadside Assistance technicians draw on years of experience and training to get you back on the road as quickly as possible.^e

Mercedes-Benz Limited Warranties

Our New Vehicle Limited Warranty runs for 48 months or 50,000 miles, whichever comes first. And anytime during the new vehicle warranty coverage, you can also purchase a Mercedes-Benz Extended Limited Warranty that will provide additional protection when the New Vehicle Limited Warranty expires!^f

Mercedes-Benz Maintenance System

Enjoy fixed, predictable service intervals every 13,000 miles or one year (10,000 miles or one year for AMG models).^g About a month before service is due, your vehicle even reminds you via a dashboard display that also explains which maintenance service is due.

Complimentary Tire Rotation

Stop by your Mercedes-Benz Center's Service Department for a no-charge first tire rotation anytime before 6,500 miles.^h

24-hour Customer Service

Our Customer Assistance Center is your one-stop source for answers. Whether you need to know how to use your audio system, find the nearest Mercedes-Benz dealer, get pricing or learn about personal and automotive accessories, just call 1-800-FOR-MERCEDES or press the Tele Aid *i*-button in your vehicle.

Sign and Drive service

Our legendary Roadside Assistance service includes bringing you some fuel if you've run out, replacing a flat tire with your spare or jump-starting your car if the battery dies. All at no charge, and all for as long as you're driving a Mercedes-Benz – even somebody else's! Help is as close as your vehicle's Wrench button (for Tele Aid subscribers) or just a phone call away at 1-800-FOR-MERCEDES.

Trip Interruption benefits

In the unlikely event that a breakdown covered by your MBUSA New Vehicle Limited Warranty occurs more than 100 miles from your home, leaves your Mercedes-Benz inoperable or unsafe to drive and requires overnight repairs at a Mercedes-Benz Center, you'll be reimbursed up to \$300 per day for any documented expenses – for up to three days – including meals, lodging and substitute transportation.

Dealer Alternate Transportation Program

Whenever you bring your vehicle into an official Mercedes-Benz Center for servicing during the warranty period, ask about your dealer's Alternate Transportation Program – so you can maintain your busy schedule while your dealer maintains your vehicle!

Mercedes-Benz Financial

Mercedes-Benz Financial offers a wide and impressive array of flexible and convenient financing options. To determine whether purchasing or leasing is right for you and to estimate the monthly payment of your next Mercedes-Benz, visit MercedesBenzFinancial.com.

European Delivery Program

With our factory delivery program, enjoy a honeymoon with your new Mercedes-Benz as you savor the delight of driving it in the land where it was built – while you enjoy a 7% savings on many models!^k Also take advantage of the optional Rally Package, which takes you through the Black Forest and the Alps, then on to Munich, staying at luxurious, historic hotels all along the way.

To learn more about these and many other services – including dealer locations and financing options – visit us at MBUSA.com today.

^a Mercedes-Benz Tele Aid equipment is standard on all S-Class models. First year's Mercedes-Benz Tele Aid service provided at no additional cost with subscription. Subscription and acquaintance call required for service to be active. Service operates only where cellular and GPS coverage are available and requires adequate power supply. Owner must authorize vehicle tracking by providing passcode and a valid stolen vehicle police report number. Passcode required to activate Remote Door Unlock. See dealer for details of telematics services. ^b Concierge service available only with Mercedes-Benz Concierge. Traffic Information and Route Assistance use is included as part of Mercedes-Benz Concierge and is available at an additional per-use charge when used with the Mercedes-Benz Tele Aid service. See dealer for details. ^c Performance of the automated voice system varies depending on the noise level in and around the vehicle. Traffic Information is based on available broadcast data, not available in all areas and only provided for routes that have been personalized on the Mercedes-Benz Tele Aid website (up to five routes) or are within a specified radius of your vehicle's present location. See Mercedes-Benz Tele Aid section of MBUSA.com for available cities. ^d Route Assistance is available for an additional charge with the Mercedes-Benz Tele Aid service and included as part of Mercedes-Benz Concierge. ^e Vehicle must be accessible from main roads. Roadside Assistance repairs may involve charges for parts, service and towing. Depending on the circumstances, these services may be provided by an outside service, courtesy of Mercedes-Benz Roadside Assistance. For full details of the Roadside Assistance Program, please see your dealer. ^f Please see your dealer for warranty details as well as for terms, conditions and pricing for extended warranty options. Surcharges for extended warranties apply after the first year. ^g Whichever comes first. Requires use of 229.5-spec oil and high-performance fleece oil filter for gasoline engines and 229.51-spec oil for diesel engines. Driver is responsible for monitoring fluid levels and tire pressure between service visits. See Maintenance Booklet for details. ^h On models with different-sized front and rear tires, which cannot be rotated, dealer will inspect tires and set inflation pressure. Follow tire manufacturer's recommendations. ⁱ For full details of Sign and Drive service, as well as the Roadside Assistance Program, please see your dealer. ^j Certain restrictions may apply. Terms, conditions and dealer participation may vary. ^k European Delivery discount available on select models. Please see your dealer for details.

Color and Trim

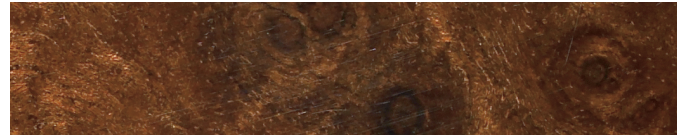
Design your unique S-Class

Customize the look of your S-Class to reflect your personal style. First choose from a variety of metallic and non-metallic exterior paints. Then combine your favorite upholstery color choice with high-gloss Burl Walnut wood trim. All exterior colors are available with all upholstery colors. The S 550 comes with hand-fitted, glove-soft leather standard and Premium Leather as an optional upgrade. The cabin of the S 600 is adorned with fine-grain Exclusive Leather, Burl Walnut wood trim and a suede-like Alcantara headliner. The S 63 AMG offers unique sport seats hand-fitted with Exclusive Leather and featuring AMG badging on the front-seat backrests. High-gloss Burl Walnut wood trim is installed by expert craftsmen and has been specially treated so as to resist splintering in case of an accident. Because when it comes to the comfort and safety of our drivers, nothing is left to chance.

Nano-particle paint

To keep your vehicle's exterior looking its best for a long time, Mercedes-Benz uses nanotechnology – specifically, microscopic ceramic nano-particles. Each ceramic nano-particle is tens of thousands of times thinner than a human hair, but when joined together they are incredibly durable. When the clearcoat is applied, the nano-particles float around freely in the liquid paint. The resulting finish offers considerably greater and longer-lasting resistance to fine scratches – such as those caused by car washes and environmental factors – than conventional paint finishes, for an enduring deep gloss.

High-gloss wood trim



Burl Walnut

Interior upholstery and trim.
Available in leather, Premium Leather and Exclusive Leather^a

Savanna/Cashmere

Grey/Dark Grey

Black

Exterior paintwork, non-metallic

Black

Arctic White

Exterior paintwork, metallic

Majestic Black

Jade Green

Capri Blue

Exterior paintwork, metallic

Flint Grey

Andorite Grey

Barolo Red

Pewter

Iridium Silver

^a Leather upholstery standard S 550 and not available S 600 and S 63 AMG. Premium Leather upholstery optional S 550 and not available S 600 and S 63 AMG. Exclusive Leather upholstery standard S 600 and not available S 550 and S 63 AMG.

Graphite Edition

Graphite

Cortecchia Nappa leather



Matte Oak wood

Mystic White Edition

Mystic White

Porcelain Nappa leather

Black Piano
Lacquer wood

Espresso Edition

Mocha Black

Sand Nappa leather



Natural Maple wood



Mercedes-Benz style is renowned even beyond the auto industry. But sometimes our owners crave more refined interiors and exteriors yet. Our *designo* series sates this desire with singular materials like metallic paint hues. Or sumptuous furnishings such as Cortecchia Nappa leather. How can you tell *designo* vehicles from all others? Their cabins reveal telltale *designo* badging. Very seductively, we might add.

designo Graphite Edition

Beneath a rich *designo* Graphite metallic exterior, you'll find a tasteful blend of luxurious textures. Take in the elegance of *designo* Cortecchia Nappa leather applied by hand throughout the Charcoal cabin and enjoy the look of Matte Oak wood trimming the doors, console, steering wheel²⁶ and beyond for added visual flavor. The front-seat backrests flaunt the signature *designo* metal plate. Exclusive *designo* floor mats are edged in Black leather.

designo Mystic White Edition

Shimmering *designo* Mystic White metallic paint presents an irresistible invitation to the world of elegant style. Once you're inside, supple Porcelain Nappa leather, applied by hand throughout the cabin, welcomes your touch. Hand-finished Black Piano Lacquer wood trims the doors, console, steering wheel²⁶ and overhead assist grips to stunning effect. The front-seat backrests flaunt the signature *designo* metal plate, while *designo* floor mats trimmed in Black leather treat every guest to a final touch of indulgence.

designo Espresso Edition

The warm sophistication of *designo* Mocha Black metallic paint sets the stage for an engaging performance within. Find enchantment in soft *designo* Sand Nappa leather hand-fitted to the seats, center armrests and door-trim inserts of the cabin. Lustrous Natural Maple wood trim, a Natural-Maple-wood-trimmed steering wheel²⁶ and Sand stitching throughout underscore the hip elegance. The front-seat backrests flaunt the signature *designo* metal plate. From the Cashmere Beige headliner to Black-leather-trimmed *designo* floor mats, this shot of espresso delivers a rush of luxury that's practically addictive.

S 550

S 600

S 63 AMG

ENGINE

Engine size and type	5,461-cc DOHC 32-valve V-8	5,513-cc bi-turbo 5.5-liter SOHC 36-valve V-12	6,208-cc AMG-built DOHC 32-valve V-8
Construction	Aluminum-alloy cylinder block.	Aluminum-alloy cylinder block.	Aluminum-alloy cylinder block.
Net power	382 hp @ 6,000 rpm	510 hp @ 5,000 rpm	518 hp @ 6,800 rpm
Net torque	391 lb-ft @ 2,800–4,800 rpm	612 lb-ft @ 1,800–3,500 rpm	465 lb-ft @ 5,200 rpm
Compression ratio	10.7:1	9.0:1	11.3:1
Fuel tank (capacity – reserve)	23.8 gal – 2.9 gal	23.8 gal – 2.9 gal	23.8 gal – 2.9 gal

DRIVETRAIN

Transmission	7-speed automatic. (S 550 and S 550 4MATIC). Electronically controlled driver-adaptive shifting.	5-speed automatic. Electronically controlled driver-adaptive shifting.	7-speed automatic with AMG SPEEDSHIFT™ Electronically controlled driver-adaptive shifting.
Drive configuration	Rear-wheel drive or optional 4MATIC all-wheel drive.	Rear-wheel drive.	Rear-wheel drive.
Rear axle ratio	2.65:1 (3.07:1 with 4MATIC)	2.65:1	2.65:1

TRACTION/STABILITY

Electronic Stability Program (ESP®)	Standard.	Standard.	Standard.
4MATIC all-wheel drive with 4-wheel Electronic Traction System (4-ETS)	Optional.	Not available.	Not available.

PERFORMANCE

Acceleration, 0–60 mph ¹	5.4 seconds (S 550 and S 550 4MATIC).	4.5 seconds.	4.5 seconds.
Fuel economy, EPA estimate highway estimate	Information not available at time of printing. See your dealer for details.	Information not available at time of printing. See your dealer for details.	Information not available at time of printing. See your dealer for details.

SPECIFICATIONS AND EQUIPMENT

S 550

S 600

S 63 AMG

44 | 45

CHASSIS

Suspension configuration	Front: 4-link suspension, antilift control, gas-pressurized shock absorbers and stabilizer bar. Rear: Multilink independent suspension, antisquat and antidive system.		
AIRMATIC Semi-Active Suspension with Adaptive Damping System (ADS-II)	Standard.	Not available.	Not available.
Active Body Control (ABC)	Optional. (Not available S 550 4MATIC.)	Standard.	Standard AMG-calibrated.
Steering	Rack-and-pinion with vehicle-speed-sensitive power assist. Turning circle: 40.03 ft curb-to-curb.		

WHEELS/TIRES

Wheels	18" 7-split-spoke, 8.5x18. ¹²	18" 5-spoke, 8.5x18 front – 9.5x18 rear, staggered-width. ¹²	20" AMG 5-spoke, 8.5x20 front – 9.5x20 rear, staggered-width. ¹²
Tires	255/45 R18, all-season performance. ¹²	255/45 R18 front – 275/45 R18 rear, all-season performance. ¹²	255/35 ZR20 front – 275/35 ZR20 rear, high-performance. ¹²

BRAKES

Brake system	Dual-circuit power-assist 4-wheel disc.	Dual-circuit power-assist 4-wheel disc.	AMG-enhanced dual-circuit power-assist 4-wheel disc.
Brake discs – calipers, front Brake discs – calipers, rear	13.2" perforated/ventilated – cast-iron 4-piston fixed. 11.8" ventilated – cast-iron single-piston floating.	13.8" perforated/ventilated – cast-iron 4-piston fixed. 12.6" ventilated – cast-iron single-piston floating.	15.4" perforated/ventilated – AMG dual twin-sliding. 14.4" perforated/ventilated – AMG dual twin-sliding.
Antilock Braking System (ABS) and Brake Assist (BAS)	Standard.	Standard.	Standard.

S 550

S 600

S 63 AMG

EXTERIOR DIMENSIONS

Wheelbase	124.6 in	124.6 in	124.6 in
Overall length	205.0 in	205.0 in	205.0 in
Overall height	58.0 in	58.0 in	58.0 in
Overall width	73.7 in	73.7 in	73.7 in
Curb weight	4,465 lbs (4,630 lbs with 4MATIC)	4,960 lbs	4,663 lbs

S 550

S 600

S 63 AMG

INTERIOR DIMENSIONS

Front headroom	37.8 in	37.8 in	37.8 in
Front legroom	41.9 in	41.9 in	41.9 in
Rear headroom	38.5 in	38.5 in	38.5 in
Rear legroom	42.3 in	42.3 in	42.3 in
Cargo capacity ²⁷	16.3 cu ft	16.3 cu ft	16.3 cu ft

Please see page 49 for Endnotes.

EXTERIOR		
●	–	● Power tilt/sliding tinted-glass sunroof with one-touch express-open/close and memory.
○ ²⁸	●	○ ²⁸ Tinted-glass Panorama Sunroof with power tilt/sliding one-touch express-open/close front panel and independently operated front/rear shades.
●	●	● Electrically heated rear window with auto-shutoff based on time, driving speed and outside temperature.
●	●	● Laminated infrared-reflecting glass helps reduce radiant heat, UV rays and noise penetration.
●	●	● Dual aero-blade windshield wipers. Heated washer system.
●	●	● Rain-sensing variable intermittent wipers measure rainfall on windshield and adjust wiper speed and frequency accordingly.
●	●	● Dual heated power mirrors linked to driver's seat memory. Auto-dimming rearview and left-side mirrors.
●	●	● Programmable power fold-in side mirrors retract when car is locked and fold out when front door is opened.
●	●	● Variable Doorstop holds the door open at virtually any point.
–	–	● AMG sport exhaust with dual chrome twin tailpipes.
●	●	● Bi-Xenon High-Intensity Discharge (HID) low-/high-beam headlamps with automatic level control and heated headlamp washers.
●	●	● Halogen front foglamps. Rear foglamp in left taillamp.
●	●	● Selectable light-sensing headlamps.
○ ²⁸	–	● AMG bodystyling and wheels.

INTERIOR		
●	●	● COMAND controller provides easy and convenient operation of the vehicle's systems.
●	●	● Multifunction steering wheel provides convenient additional controls for basic audio, Voice Control and phone functions, as well as operation of the multifunction display.
●	●	– Shift paddles.
–	–	● AMG shift paddles.
●	●	● Built-in keypad located beneath handrest for easy access to Hands-Free Communication System and radio presets.
●	●	● Adjustable fiber-optic ambient lighting under the door and dashboard.
●	●	● Electronic Trunk Closer.
●	●	● Electronic parking brake disengages when the vehicle is put into gear and the gas is applied.
●	●	● Power rear-window sunshade with one-touch express-up/down.
○ ²⁸	●	● Power rear side window shades.
●	●	● Auto-dimming rearview mirror.

INTERIOR (continued)		
●	●	● 4-way (tilt/telescoping) power steering column linked to driver's seat memory.
●	●	● Programmable easy-exit feature moves driver's seat back and/or raises steering column.
●	●	● Four illuminated vanity mirrors (in sun visors and rear-cabin ceiling).

SEATING		
●	●	● 14-way power front seats, each with 3-position memory. Driver's seat memory includes steering column and outside mirror positions.
○ ²⁸	●	● Drive-Dynamic multicontour front seats, each with 4-level massage.
●	●	● 3-level heated front seats.
●	●	● Heated and Active Ventilated front seats.
○ ²⁸	●	○ ²⁸ Heated and Active Ventilated rear seats.
○ ²⁸	●	○ ²⁸ Power rear outboard seats. (Adjustable lumbar support available S 600 only.)
●	●	● Driver and front passenger power lumbar support.
●	–	– Leather upholstery and trim.
○ ²⁸	–	– Premium Leather upholstery and trim.
–	●	– Exclusive Leather upholstery and trim. Alcantara headliner.
–	–	● AMG Premium Leather upholstery and trim. Alcantara headliner.
●	●	● Hand-polished Burl Walnut wood trim.
●	●	– Wood/leather steering wheel.
–	–	● AMG leather sport steering wheel with shift paddles.
–	●	– Wood-trimmed telephone keypad cover with handrest.

CLIMATE CONTROL		
●	–	● Dual-zone automatic climate control with individual driver and front passenger control of temperature, speed and airflow distribution via hard keys (airflow and temperature only) or the COMAND system.
○ ²⁸	●	○ ²⁸ 4-zone automatic climate control. Rear-cabin operating panel with dual temperature, speed and airflow distribution controls.
●	●	● Electrostatic dust and pollen filter.
●	●	● Sun sensor helps compensate for the effects of direct sunlight on the occupants.
●	●	● Humidity/dewpoint sensor reduces window fogging during humid weather and helps prevent overdrying of cooled air.

CLIMATE CONTROL (continued)		
●	●	● Seat-belt usage sensors allow climate control to focus on occupied seating positions.

AUDIO/NAVIGATION/TELEMATICS		
●	●	● Cockpit Management and Data (COMAND) system.
●	●	● harman/kardon® LOGIC7® digital surround-sound system, boasting 600 watts, 14 speakers, a 5.1-channel amplifier and Digital Dynamic Volume Control.
●	●	● 20-gigabyte hard-drive-based in-dash next generation Navigation System uses Global Positioning System (GPS) satellites to determine the current location of your car. ¹⁰
●	●	● Integrated single-feed 6-disc CD/DVD changer.
●	●	● PCMCIA slot allows you to transfer digital audio files from your PC onto a memory card and play them through the COMAND system.
●	●	● Hands-Free Communication System with Voice Control.
●	●	● Mercedes-Benz Tele Aid System uses GPS satellites plus a cellular link to provide 24-hour live assistance for: emergency aid (SOS button), roadside assistance (Wrench button) or information services (F-button). – Basic Mercedes-Benz Tele Aid service includes Automatic Collision Notification, Stolen Vehicle Recovery, Remote Door Unlock service and Dealer Connect. ²⁹

INSTRUMENTATION		
●	●	– Digital display of speedometer, odometer and Touch Shift gear/mode selection. Electronic analog tachometer and fuel gauge.
–	–	● AMG gauges with AMG RACETIMER ¹³ in digital display.
●	●	● Multifunction display in instrument cluster, scrolled via steering-wheel controls to operate and display various menus and vehicle features: <ul style="list-style-type: none"> • Trip meter and outside temperature indicator. • Digital speedometer, Maintenance System (see below) and oil-level check. • Radio station, 6-disc CD/DVD changer, iPod® playlist/track (with optional iPod Integration Kit) and SIRIUS Satellite Radio. • Hard-drive-based Navigation System route guidance. • Vehicle reminder and message indicator. • Driver-programmable settings for instruments and lighting, vehicle and convenience features. • Trip computer (elapsed time, fuel consumption and distance to empty). • DISTRONIC PLUS Adaptive Cruise Control settings.³⁰
●	●	● Mercedes-Benz Maintenance System Plus displays distance remaining to next basic maintenance service, indicates type of service due and provides automatic reminder when service interval draws near. System also monitors brake-pad wear.
●	●	● Onboard tire pressure monitoring system allows driver to check the inflation pressure of all four mounted tires.

LOCKING/SECURITY		
●	●	● SmartKey remote control integrates: Remote Door Lock/Unlock buttons, trunk opener, removable valet key and panic alarm. Driver may selectively unlock only the driver's door and fuel filler or all doors plus the trunk and fuel filler.
●	●	● SmartKey offers infrared-remote opening/closing of windows and sunroof and can remotely turn on Active Ventilated front seats.
●	●	● Driver-programmable drive-away locking automatically locks the doors when the car reaches 9 mph.
●	●	● Night security illumination uses the car's exterior lights to help illuminate a path after parking.
●	●	● Locator lighting uses the car's lights to help illuminate a return path when the car is remote-unlocked in darkness. Unlocking car activates illuminated entry system.
●	●	● Anti-Theft Client Alarm Notification with remote panic feature.
●	●	● Emergency trunk release, located inside trunk and illuminated for 60 minutes after trunk is closed.
●	●	● Integrated 3-button garage door control, compatible with HomeLink® components and some other systems.
●	●	● Mercedes-Benz Tele Aid GPS-based Stolen Vehicle Recovery helps law enforcement agencies track and recover stolen vehicle. ²⁹
●	●	● Mercedes-Benz Tele Aid Remote Door Unlock. ²⁹
●	●	● Mercedes-Benz Tele Aid Automatic Alarm Notification alerts Mercedes-Benz to contact vehicle owner if anti-theft alarm sounds. ²⁹

RESTRAINT SYSTEMS		
●	●	● Integrated Restraint System: <ul style="list-style-type: none"> • Driver and front passenger are each provided with a dual-stage front air bag (adaptive for the front passenger), a side-impact air bag and a 3-point seat belt with an Emergency Tensioning Device (ETD) and adaptive belt force limiter.¹⁵ • 2nd-row outboard passengers are each provided with a 3-point seat belt with an ETD, belt force limiter and side-impact air bag.¹⁵ • 2nd-row center passenger is provided with a 3-point seat belt only.
●	●	● Window Curtain Air Bags: <ul style="list-style-type: none"> • In a side impact exceeding a preset deployment threshold, a multichamber air bag deploys along the front and rear side-door windows on the affected side of the vehicle.¹⁵ • An integrated rollover sensor automatically deploys the ETDs and, if deemed necessary, the Window Curtain Air Bags in the event of a detected rollover.¹⁵
●	●	● Dual-stage front air bags (adaptive for the front passenger) are deployed in response to frontal impact severity exceeding a preset deployment threshold. ¹⁵
●	●	● Occupant Classification System (OCS): <ul style="list-style-type: none"> • OCS automatically turns the front passenger's front air bag on or off and adjusts the air bag inflation rate based on the weight category determined by weight sensor readings from the front passenger seat.³¹

Please see page 49 for Endnotes. ● Standard. ○ Optional or included with a package. – Not available.

RESTRAINT SYSTEMS (continued)

●	●	●	PRE-SAFE® helps prepare occupants for a possible collision before it occurs. If PRE-SAFE senses a possible accident based on brake pedal application pattern, steering-wheel input pattern or Electronic Stability Program (ESP®) activation level, it will take action to help protect you better depending on the situation, including: <ul style="list-style-type: none"> Electronically tensioning the front seat belts. Adjusting the front passenger seat (and rear seats with Rear-Seat Package) for potentially more favorable air-bag and seat-belt effectiveness. Inflating outboard side bolsters and seat cushions of front seats on vehicles equipped with multicontour seats. Closing the windows⁵ and sunroof⁶ (if a possible rollover is detected). If no collision occurs, PRE-SAFE releases the front seat-belt tensioners, and occupants may readjust their seats, the windows and the sunroof.
●	●	●	Emergency Tensioning Devices (ETDs) are deployed in a front or rear impact exceeding a preset threshold of severity, or certain rollovers. A front ETD will not deploy if seat belt is unfastened.
●	●	●	Mercedes-Benz Tele Aid Automatic Collision Notification engages the SOS function if an air bag or ETD deploys. ²⁹
●	●	●	Universal LATCH (Lower Anchors and Tethers for Children) system at 2nd-row outboard seating positions. Selectable passenger seat-belt retractors help secure child seats. ¹⁵
●	●	●	Front seat belts include automatically height-adjustable shoulder belts and lower points attached to seat frames.
●	●	●	Automatically height-adjusting rear shoulder belts.
●	●	●	Active Front Head Restraints, adjustable for height and fore-aft.
●	●	●	Three rear-seat head restraints, manually adjustable fore-aft. All three head restraints can also be remotely retracted by the driver for improved rearward vision when the rear seats are unoccupied. On models with power rear seats, rear head restraints rise automatically when seat belt is fastened.

INDIVIDUAL OPTIONS

○	-	-	4MATIC all-wheel drive.
○	●	○	Panorama Sunroof includes tinted-glass roof, dual power shades and power tilt/sliding one-touch front panel.
○	●	●	Power rear side window shades.
○	●	●	Active Body Control suspension. (Not available on S 550 4MATIC.)
○	●	-	Heated steering wheel (standard with <i>designo</i> editions).
○	-	-	Premium Leather upholstery.
○	○	○	iPod® Integration Kit.
○	○	-	19" 9-twin-spoke light-alloy wheels (not available with AMG Sport Package). ¹²

OPTION PACKAGES

●	●	●	Premium 1 Package: <ul style="list-style-type: none"> Heated and Active Ventilated Seats. Electronic Trunk Closer.
○	●	●	Premium 2 Package: Includes contents of Premium 1 Package plus: <ul style="list-style-type: none"> KEYLESS-GO. PARKTRONIC system. Rear View Camera.
○	●	○	Premium 3 Package: Includes contents of Premium 2 Package plus: <ul style="list-style-type: none"> Drive-Dynamic multicontour front seats (standard S 63 AMG). Night View Assist.
○	●	○	DISTRONIC PLUS Package: <ul style="list-style-type: none"> DISTRONIC PLUS Adaptive Cruise Control. Blind Spot Assist. Parking Guidance.
○	●	○	Rear-Seat Package: <ul style="list-style-type: none"> 8-way power rear seats. Heated and Active Ventilated rear seats. 4-zone climate control.
○	-	-	AMG Sport Package: <ul style="list-style-type: none"> AMG bodystyling and polished chrome exhaust tips. 19" AMG 5-spoke light-alloy wheels.¹²
-	-	○	AMG Performance Package: <ul style="list-style-type: none"> 186-mph speed limiter.² 20" AMG double-spoke forged aluminum wheels.¹² AMG leather steering wheel. Choice of Black Piano Lacquer or Burl Walnut wood trim.

S-CLASS *designo* PACKAGES

S 550 with <i>designo</i> includes power rear side window shades, 8-way power rear seats, heated and Active Ventilated rear seats, 4-zone climate control and heated steering wheel. S 63 AMG with <i>designo</i> includes 8-way power rear seats and 4-zone climate control. ²⁶			
○	○	○	Graphite Edition: <ul style="list-style-type: none"> <i>designo</i> Graphite metallic paint. <i>designo</i> Corteccia Nappa leather and Matte Oak wood trim. Matte Oak wood trim on steering wheel.²⁶
○	○	○	Mystic White Edition: <ul style="list-style-type: none"> <i>designo</i> Mystic White metallic paint. <i>designo</i> Porcelain Nappa leather and Black Piano Lacquer wood trim. Black Piano Lacquer wood trim on steering wheel.²⁶
○	○	○	Espresso Edition: <ul style="list-style-type: none"> <i>designo</i> Mocha Black metallic paint. <i>designo</i> Sand Nappa leather and <i>designo</i> Natural Maple wood trim. Natural Maple wood trim on steering wheel.²⁶

ENDNOTES

- 1 Stated rates of acceleration are based upon manufacturer's track results and may vary depending on model, environmental and road surface conditions, driving style, elevation and vehicle load.
- 2 Please obey all speed laws.
- 3 Standard S 550. Not available S 600 and S 63 AMG.
- 4 No system, regardless of how advanced, can overcome the laws of physics or correct careless driving. Please always wear your seat belt. Performance is limited by available traction, which snow, ice and other conditions can affect. Always drive carefully, consistent with conditions. Best performance in snow is obtained with winter tires.
- 5 PRE-SAFE® closes the side windows when the system's sensors detect side movements that suggest a possible rollover.
- 6 A small gap is left near the full-close position.
- 7 Call to Emergency Response Center requires active Mercedes-Benz Tele Aid subscription.
- 8 Braking effectiveness also depends on proper brake system maintenance, and tire and road conditions.
- 9 Requires subscription. Service subscription for the first six months included with purchase.
- 10 While the Navigation System provides directional assistance, the driver must remain focused on safe driving behavior, including paying attention to traffic and street signs. The driver should utilize the system's audio cues while driving and should only consult the map or visual displays once the vehicle has been stopped in a safe place. Maps do not cover all areas or all routes within an area.
- 11 Night View Assist does not replace the use of headlamps and should not be used as the primary visual source for the driver.
- 12 Lower aspect ratio tires and accompanying wheels provide substantially increased treadwear, increased tire noise and reduced ride comfort. Serious wheel and tire damage may occur if the vehicle is operated on rough or damaged road surfaces or upon encountering road debris or obstacles. These tires are not designed for use on snow and ice. Winter tires mounted on appropriately sized and approved wheels are recommended for driving in those conditions.
- 13 Only for timing use on roads and in conditions where high-speed driving is permitted. Racing on public roads is prohibited under all circumstances and posted speed limits should always be obeyed.
- 14 The driver can override the PRE-SAFE Brake intervention at any time by stepping on the accelerator pedal.
- 15 WARNING: THE FORCES OF A DEPLOYING AIR BAG CAN CAUSE SERIOUS OR FATAL INJURIES TO A CHILD UNDER AGE 13. THE SAFEST SEATING POSITION FOR YOUR CHILD IS IN THE REAR SEAT, BELTED INTO AN APPROPRIATE, PROPERLY INSTALLED CHILD SEAT, OR CORRECTLY WEARING A SEAT BELT IF TOO LARGE FOR A CHILD SEAT. SEE OPERATOR'S MANUAL FOR ADDITIONAL WARNINGS AND INFORMATION ON AIR BAGS, SEAT BELTS AND CHILD SEATS.
- 16 Rear View Camera does not audibly notify driver of objects outside the system's field of vision, which includes nearby objects, and is not a substitute for actively checking around the vehicle for any obstacles.
- 17 DISTRONIC PLUS Adaptive Cruise Control is no substitute for active driving involvement. It does not react to stationary objects, nor recognize or predict the curvature and lane layout of the road or the movement of vehicles ahead, and can only apply a maximum of 40% of vehicle braking power. It is the driver's responsibility at all times to be attentive to traffic and road conditions, and to provide the steering, braking and other driving inputs necessary to retain control of the vehicle.
- 18 Drivers are cautioned not to wait for the DISTRONIC Proximity Warning System before braking, as that may not afford sufficient time and distance to brake safely.
- 19 Certain Mercedes-Benz-approved phones support voice interactivity, but not the phone book download feature, with Bluetooth® technology. See dealer for details.
- 20 Interface and phone sold separately. See dealer for a list of approved compatible phones.
- 21 Always plug the phone into the cradle for use inside the vehicle or use the Bluetooth interface. Otherwise operating a non-approved phone or radio transmitter with its own attached or built-in antenna while the engine is running can interfere with the vehicle's electronic systems. For safety reasons, the driver should not use a mobile phone while the vehicle is in motion. We encourage the driver to stop the vehicle in a safe location before answering or placing a call. See your Mercedes-Benz dealer or visit Wireless4MB.com for current handset availability. Not all approved phones support all system features. See dealer for details.
- 22 BLUETOOTH INTERFACE DOES NOT PROVIDE PHONE CHARGING OR EXTERNAL ANTENNA. PHONE BOOK DOWNLOAD AND VOICE INTERACTIVITY FEATURES ARE DEPENDENT ON SELECTED HANDSET. VISIT WIRELESS4MB.COM FOR DETAILS.
- 23 Please see your dealer for accessory warranty information.
- 24 SIRIUS and the SIRIUS dog logo are registered trademarks of SIRIUS Satellite Radio Inc. NFL is a registered trademark of the National Football League. NASCAR® is a registered trademark of the National Association for Stock Car Auto Racing, Inc. NBA is a registered trademark of NBA Properties, Inc. All rights reserved. For full Terms & Conditions, visit sirius.com. Pricing and programming are subject to change. Not available in Alaska, Hawaii or Puerto Rico. Six-month service subscription included with purchase.
- 25 iPod is a registered trademark of Apple Computer, Inc. All iPod devices are sold separately. Feature not compatible with iPod Shuffle. See dealer for details.
- 26 Wood/leather steering wheel and heated steering wheel not available S 63 AMG.
- 27 Unsecured cargo can become hazardous in a collision. Always secure cargo using floor-mounted tie-downs.
- 28 Optional or part of an Option Package. See optional equipment listing on page 48.
- 29 Mercedes-Benz Tele Aid equipment is standard on all S-Class models. First year's Mercedes-Benz Tele Aid service provided at no additional cost with subscription. Subscription and acquaintance call required for service to be active. Service operates only where cellular and GPS coverage are available and requires adequate power supply. Owner must authorize vehicle tracking by providing passcode and a valid stolen vehicle police report number. Passcode required to activate Remote Door Unlock. See dealer for details of telematics services.
- 30 When equipped with this feature.
- 31 OCCUPANT CLASSIFICATION SYSTEM (OCS) IS DESIGNED TO TURN THE FRONT PASSENGER'S FRONT AIR BAG OFF WHEN THE SYSTEM SENSES THE WEIGHT OF A TYPICAL CHILD 12 MONTHS OLD OR LESS PLUS THE WEIGHT OF A STANDARD APPROPRIATE CHILD RESTRAINT. SEE OPERATOR'S MANUAL FOR IMPORTANT ADDITIONAL INFORMATION ON THIS SYSTEM AND FOR FURTHER INFORMATION REGARDING THE TRANSPORTATION OF CHILDREN HEAVIER THAN A TYPICAL 12-MONTH-OLD.

