

# SLK

2008 SLK-CLASS



Mercedes-Benz





## The SLK-Class

<b>DESIGN</b>	
Exterior design	4
Sport Package	6
Interior design	8
Vario-roof	12
<hr/>	
<b>SAFETY</b>	14
<hr/>	
<b>DYNAMICS</b>	
Engines	18
Transmissions	20
Performance	22
<hr/>	
<b>PERFORMANCE</b>	
AMG	24
<hr/>	
<b>COLOURS AND MATERIALS</b>	
<i>designo</i>	26
Paint, combination options	28
Upholstery and trim	30
<hr/>	
<b>EQUIPMENT</b>	
Equipment listing	32
Accessories	34
<hr/>	
<b>TECHNICAL FEATURES</b>	
Technical data	35
<hr/>	
<b>MERCEDES-BENZ OWNERSHIP AND WEBSITE</b>	36















## This Silver Arrow is pure gold.

The media dubbed the SLK-Class as the “small Silver Arrow” even before it ventured outside the pages of top motoring magazines. Now that the SLK-Class has leapt off the pages and hit the road, you can experience the air-piercing, arrow-shaped body for yourself. Enjoy bold, spirited styling with an air of sleek confidence. A distinctive nose and radiator grille hint at the power that lies beneath the hood. The highly characteristic tail, with dual tailpipes will put a look of awe on the faces of all those you leave in the dust. Its sporty suspension is more agile than ever. The SLK-Class is the ultimate combination of classic sporty personality and effortless poise and assurance.







## You can believe your eyes.

Feast your eyes on the SLK-Class Sport Package. No, your eyes do not deceive you. Our new optional Sport Package, available on both the SLK280 and SLK350, includes such sumptuous upgrades as black-smoked headlamps, 17" 6-twin spoke alloy wheels, performance tires, and speed-sensitive steering. An upgraded sports air filter improves engine sound. The AMG trunk lid spoiler, sport braking system, perforated front discs and brake calipers with Mercedes-Benz lettering top off its commanding presence and sporty prowess.

Then look around our luxuriously appointed interior, which includes supple black leather seats with contrasting red stitching and red seat belts, steering wheel shift paddles, a new instrument cluster design with red needles, velour floor mats, carbon trim and a complimenting black roof liner. Our Sport Package is just one more way to help you stand out.





## Master the sport of luxury.

Lose yourself in a world where sport meets luxurious detail. The seats with their contours and magnesium frames are not only stunningly attractive but also offer plenty of lateral support during dynamic cornering. Enjoy the heated seats<sup>1</sup> and backrests with handy clothes hooks. Choose fine-quality Nappa leather upholstery in Tobacco Brown<sup>2</sup> or leather upholstery in one of the four other colours.

When the season cools off, enjoy pleasantly warm air on the back of your neck with AIRSCARF neck-level heating.<sup>3</sup> Select different temperature settings while the blower adjusts automatically to the vehicle's speed.

Find everything you need to know with one glance of the sporty and concise instrument cluster. Its black-faced dials surrounded by silver painted trim rings are yet another example of our meticulous attention to seemingly small details. The same can be said for the silver-painted magnesium trim on the door handles and armrests.

It all adds up to pure luxury, a sport well worth mastering.

Race-bred chronometer-style gauges complement the SLK's cockpit, featuring a speedometer, fuel gauge, tachometer and multifunction display. Silver trim contrasts the darker sculpted dash.



<sup>1</sup>Optional on the SLK280 as part of the Premium Package. <sup>2</sup>Optional on the SLK350 only. <sup>3</sup>Optional on the SLK280 and SLK350 as part of the Premium Package.

## Knowledge is power.

Mercedes-Benz wants to keep you completely informed, so there's a standard single CD player and AM/FM weatherband radio with steering wheel controls at your fingertips. New this year is the Entertainment Package<sup>1</sup> for the SLK280 and SLK350, including the COMAND control and display system that puts all the necessary information on a 6.5" full colour screen in view. Enjoy the harman/kardon<sup>®</sup> LOGIC7<sup>®</sup> surround sound system with an MP3-compatible 6-disc CD changer, 110 premium channels of SIRIUS Satellite Radio, cellular telephone prewiring (a feature that makes it possible to convert your cell phone to safe, hands free use while driving) and TeleAid Emergency Calling System<sup>2</sup>. The SLK280 and SLK350 can upgrade to the COMAND APS with navigation as a stand-alone option. The SLK55 AMG comes standard with all these impressive features.

Enjoy an array of benefits right at your fingertips, with the multifunction steering wheel. Just press one of the buttons to operate the standard-fitted multifunction interface or the audio system. The Power Seating Package<sup>3</sup>, including 3-position memory with power steering column, stores the settings for the power-adjustable seats, steering wheel and mirrors.

THERMATIC automatic climate control comes standard in the SLK280 while the THERMOTRONIC automatic climate control, which gives individual temperature control to both the driver and the passenger, is standard on the SLK350 and SLK55 AMG.

<sup>1</sup>Optional on the SLK280 and SLK350. <sup>2</sup>Subscription is required for service to be active. TeleAid operates only where cellular and Global Positioning System coverage is available. <sup>3</sup>Optional on the SLK280.







## The ultra-civilized roof changes faster than the weather itself.

The SLK is the only model in its class capable of converting from a hardtop coupe to an open-top roadster. Press a button and in just 22-seconds, find yourself at one with the elements. The electro-hydraulic vario-roof moves backwards in a single elegant motion and disappears into the rear of the car, out of sight. Thanks to its intelligently designed folding mechanism, the SLK is able to offer significantly greater trunk space than its predecessor when the roof is lowered. When the roof is raised, the tinted glass has a pleasant cooling effect, while at colder temperatures the heated rear windshield gives you a clear view of those desperately trying to keep up.













## We've made room for more safety.

### ESP® AND BAS

If your vehicle is in danger of skidding, the Electronic Stability Program (ESP®) helps stabilize the situation by braking one or more wheels as required<sup>1</sup>, and adjusting the engine output accordingly. Also on board is the Brake Assist system (BAS), which recognizes emergency braking by the speed with which you lift off the accelerator and press the brake pedal and immediately applies maximum braking force.

### HEADLAMPS

The SLK280 is equipped with standard clear-lens halogen headlamps that provide optimum illumination without affecting other drivers. The SLK350 and SLK55 AMG are equipped with Bi-Xenon headlamps that feature dynamic range adjustment, headlamp washers and the cornering light function for added illumination<sup>2</sup>.

### THE PASSENGER SAFETY CELL

You never need safety until you need it. This is when you'll appreciate our inner strength, such as superbly engineered crumple zones, outstanding torsional stiffness and rollover bars ingeniously anchored in the body for additional protection.

<sup>1</sup>No system, regardless of how advanced, can overcome the laws of physics or correct careless driving. Please always wear your seat belt. Best performance in snow is obtained with winter tires. <sup>2</sup>Optional on the SLK280 as part of the Bi-Xenon Headlamp Package.





## Relentless care for your safety.

Technology may one day make it possible to see into the future so that vehicles can avoid dangerous situations altogether. Until such a day, we are committed to protecting you from unforeseen driving hazards with our comprehensive range of intelligent safety concepts.

In the event of a head-on collision, the restraining effect of the seat belt tensioners works in tandem with the adaptive driver and passenger air bags<sup>1</sup>. These have a two-stage deployment system, which is triggered according to the severity of the impact. Two additional, highly sensitive crash sensors at the front of the vehicle detect the severity of the accident with an even greater degree of precision.

Furthermore, the SLK-Class is equipped with head/thorax air bags. Fitted in the outside edge of the seat backrests, these enlarged air bags offer additional head protection by inflating to prevent any contact between occupants and the door/window in the event of a side collision. More hazards are detected by the rollover sensor, which triggers both belt tensioners and the head/thorax air bags in certain sideways rollover situations.

<sup>1</sup>WARNING: The forces of a deploying air bag can cause serious or fatal injuries to a child under age 13. See Operator's Manual for additional warnings and information on air bags, seat belts and child seats.







## At the heart of it all: impassioned vitality.

The SLK-Class' engines provide not only a perfectly tuned acoustic treat, their lively performance is also very impressive. To say the least. How impressive? Catch your breath with a V-6 engine on the SLK280 that accelerates from 0-100 km/h in a mere 6.3 seconds. Consider that total displacement is 2,996-cc with net power of 228 hp. The V-6 on the SLK350 is even more breathtaking. Not only does it have even greater pulling power, it also sounds more powerful. It has 40 hp more output, 37 lb-ft more torque, and more total displacement. This adds up to a sprint from 0 to 100 km/h in just 5.6 seconds. That's nothing short of exceptional performance.







## When the road throws you a curve, hit it out of the park.

Enjoy the sport of driving with the help of an impressively designed 6-speed manual transmission, which comes standard in the SLK280 and SLK350.

The SLK55 AMG's 7G-TRONIC is the world's first 7-speed automatic transmission. The use of seven speeds results in smaller intervals between ratios, and due to the multiple downshift principle, the transmission skips some gears under kick-down for faster acceleration. The use of seven speeds also reduces average engine speeds, and in turn, lowers fuel consumption. The 7G-TRONIC Sport, available as part of the Sport Package on the SLK280 and SLK350, provides an extra-sporty feel with steering wheel shift paddles, and faster, easier gear changes.

## Challenge the laws of dynamics.

When you step into the SLK-Class, you take a serious step up, in terms of dynamic poise and assuring performance. Enjoy the confidence that comes with astonishingly responsive sport suspension, an extra large braking system, and performance tires. Even the little extras have a huge effect, such as the automated rain-sensing windshield wipers and intrinsically clever auto-dimming mirrors. From top to bottom, the SLK-Class caters to those with the pre-eminent driving experience in mind.







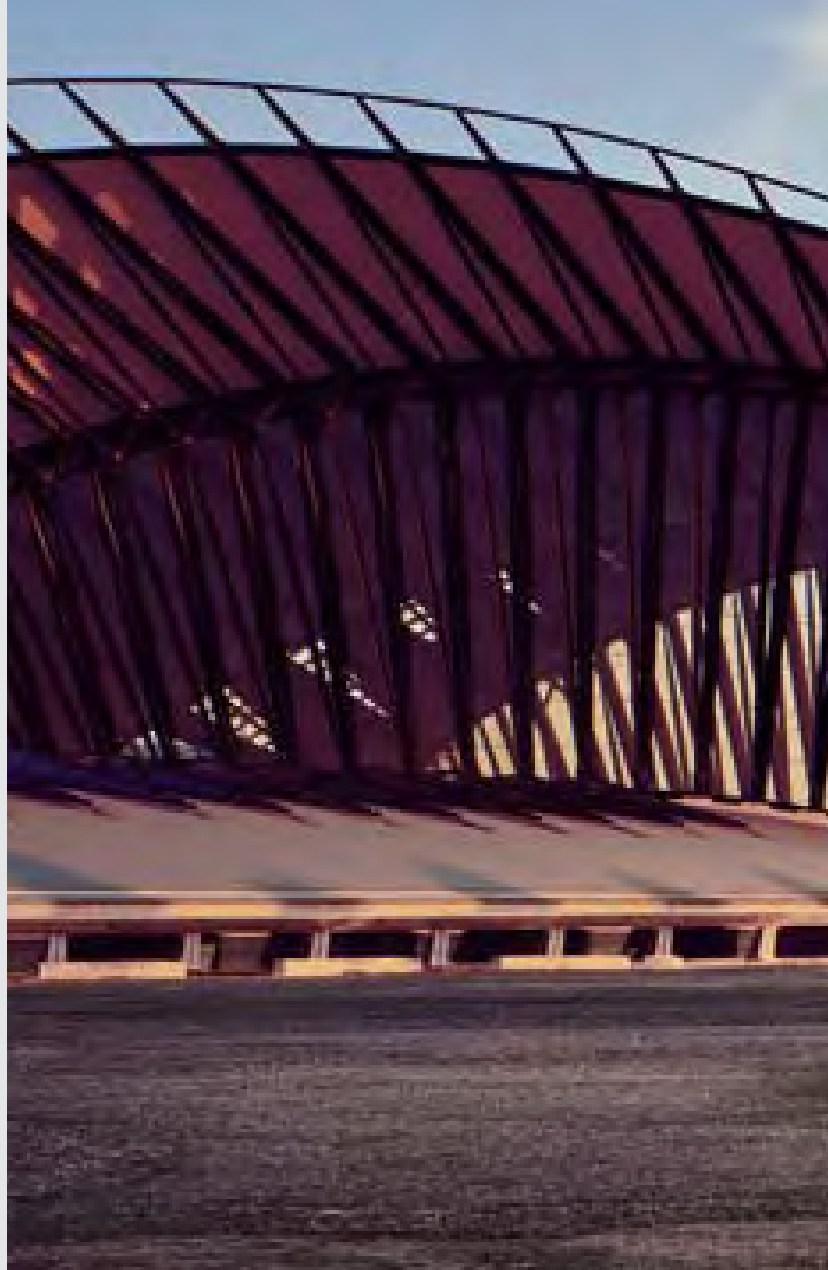
## Time flies. Better catch up with it.

Sometimes, we all wish time would stand still. But a 0 to 100 km/h time of 4.9 seconds dispels such thoughts pretty quickly. With its AMG-built 5.5-litre V-8 engine, the SLK55 AMG roadster is unique in its class, delivering a sonorous 355 hp of power and peak torque of 376 lb-ft. The power flow to the wheels is managed by the 7G-TRONIC Sport automatic transmission with steering wheel shift paddles.

There's a lot that accompanies the power and muscle of the SLK55 AMG. Along with the corner-hugging AMG sport suspension, there's the AMG body styling and the AMG 18" multi-spoke alloy wheels, carrying 225/40 R 18 tires at the front and 245/35 R 18 tires at the rear.

The interior, meanwhile, welcomes you with the finest-quality AMG Nappa leather upholstery, AMG sport seats, an ergonomic AMG sport steering wheel with shift paddles in silver-coloured aluminium, and the AMG instrument cluster with RACETIMER. Exterior highlights include the AMG sport exhaust system with dual twin-chromed tailpipes and the AMG high-performance brake system with composite discs and 6-piston fixed calipers.

The SLK350 is available with an optional AMG Sport Package including AMG body styling and AMG 17" 5-spoke alloy wheels.





## Nobody can get inside your head. But they can get inside your car.

Custom-design your SLK-Class like no one else, with the help of our *designo* range, which is comprised of 11 exclusive metallic paint finishes, fine woods and high-quality leather upholstery – or combined leather and Alcantara with striking double stitching. Matching leather trim elements and leather trimmed rollover bars are also available. The rollover bars are available in conjunction with all the standard leather upholstery colours.

You can also specify *designo* wood trim elements, in *designo* Anthracite Tamo or *designo* Natural Poplar. Or, choose an Alcantara roof lining. Depending on which other *designo* trim or upholstery elements you select, we can also supply the steering wheel and selector lever in two-tone *designo* leather or in a *designo* wood/leather version.

Please see your dealer for details.

Superb finishing details  
like leather-wrapped  
rollover bars in Classic Red  
reaffirm the SLK-Class'  
European roadster heritage.







# Express yourself.



Colour is the most personal choice of all. So which one expresses you best? And which interior do you choose to live in? After all, the perfect finishing details are what make an automotive masterpiece. And here's a reassuring thought: both solid and metallic paint finishes benefit from an extra scratch-resistant clearcoat. This makes your colour less susceptible not only to scratches, but also to sunlight, temperature variations, dust and soot.

	LEATHER	Black	Orient Beige	Dusky Red	Alpaca Grey	NAPPA LEATHER	Tobacco Brown	AMG NAPPA LEATHER	Black	Orient Beige	Black/Dusky Red	Black/Alpaca Grey
<b>SOLID PAINT</b>												
Black		●	●	●	●		●		●	●	●	●
Fire Opal		●	○	○	●		○		●	○	○	●
Calcite White		●	○	●	●		●		●	○	●	●
<b>METALLIC PAINT</b>												
Obsidian Black		●	●	●	●		●		●	●	●	●
Jasper Blue		●	○	○	○		○		●	○	○	○
Tanzanite Blue		●	○	○	●		○		●	○	○	●
Thulite Red		●	●	○	●		○		●	●	○	●
Cubanite Silver		●	○	●	●		●		●	○	●	●
Tellurium Silver		●	○	○	○		○		●	○	○	○
Iridium Silver		●	○	●	○		●		●	○	●	○
Benitoite Blue		●	○	○	○		●		●	○	○	○

● Recommended combination      ○ Possible combination

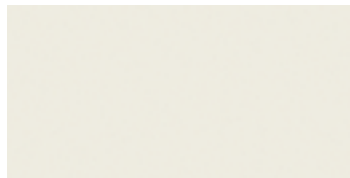
SOLID PAINT



040 Black



590 Fire Opal



650 Calcite White

METALLIC PAINT (OPTIONAL)



197 Obsidian Black



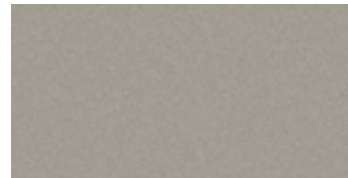
345 Jasper Blue



359 Tanzanite Blue



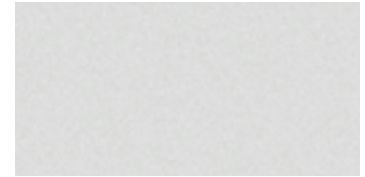
541 Thulite Red



723 Cubanite Silver



762 Tellurium Silver



775 Iridium Silver



950 Benitoite Blue





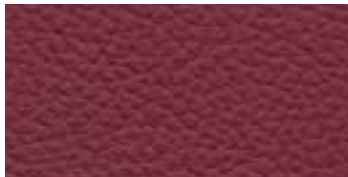
LEATHER



801 Black



805 Orient Beige



807 Dusky Red



808 Alpaca Grey

NAPPA LEATHER



864 Tobacco Brown

AMG NAPPA LEATHER



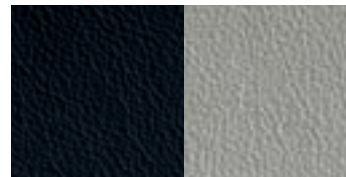
851 Black



855 Orient Beige



857 Black/Dusky Red



858 Black/Alpaca Grey

TRIM



H80 Aluminium



728 Vavona Wood



H73 AMG Carbon Fibre

## INDIVIDUAL EQUIPMENT (SELECTION)

	SLK280	SLK350	SLK55 AMG
<b>TRANSMISSION</b>			
6-speed manual transmission	●	●	–
7G-TRONIC 7-speed automatic transmission	○	○	–
7G-TRONIC 7-speed automatic transmission with AMG SPEEDSHIFT enhancements	–	–	●
<b>TRACTION / STABILITY</b>			
DIRECT CONTROL suspension and power steering	●	●	●
Electronic Stability Program (ESP®) including ABS and traction control (ASR)	●	●	●
Brake Assist (BAS)	●	●	●
Sport suspension	●	●	●
Parameter steering	○ <sup>1</sup>	○ <sup>1</sup>	●
<b>AUDIO / VISUAL / COMMUNICATION</b>			
CD player with AM/FM/weatherband radio	●	●	●
COMAND with harman/kardon® LOGIC7® surround sound system and MP3-compatible 6-disc CD changer	○ <sup>1</sup>	○ <sup>1</sup>	●
COMAND APS with navigation	○	○	●
SIRIUS Satellite Radio	○ <sup>1</sup>	○ <sup>1</sup>	●
Cellular Telephone Prewiring	○ <sup>1</sup>	○ <sup>1</sup>	●
<b>EXTERIOR</b>			
16" 5-spoke alloy wheels	●	–	–
17" 6-twin spoke alloy wheels	○ <sup>1</sup>	○ <sup>1</sup>	–
17" 10-spoke alloy wheels	–	●	–
AMG 17" 5-spoke wheels	–	○ <sup>1</sup>	–
AMG 18" multi-spoke wheels	–	–	●

## INDIVIDUAL EQUIPMENT (SELECTION)

	SLK280	SLK350	SLK55 AMG
Heated windshield washer system with two-stage rain-sensing windshield wipers	●	●	●
Tinted glass	●	●	●
Bi-Xenon headlamps with washers and cornering lights	○ <sup>1</sup>	●	●
<b>INTERIOR</b>			
Sport seats	●	●	●
Heated seats	○ <sup>1</sup>	●	●
10-way power adjustable seats with 3-position memory	○ <sup>1</sup>	○ <sup>1</sup>	●
Leather-wrapped multifunction steering wheel and shift knob	●	●	●
Leather upholstery	●	●	–
Nappa leather upholstery	–	○ <sup>2</sup>	●
AMG Nappa leather upholstery	–	–	●
Aluminium trim	●	●	●
Vavona wood trim (includes steering wheel and hand brake)	○	○ <sup>3</sup>	–
AMG Carbon Fibre trim	–	–	○ <sup>1</sup>
Auto dimming mirrors (rearview & driver's side)	●	●	●
THERMATIC automatic climate control	●	–	–
THERMOTRONIC automatic climate control	–	●	●
Power windows with one-touch express up and down	●	●	●
AIRSCARF	○ <sup>1</sup>	○ <sup>1</sup>	●
Fabric wind screen	○ <sup>1</sup>	○ <sup>1</sup>	●
Power-tilt/telescoping steering column	○ <sup>1</sup>	○ <sup>1</sup>	●
Steering wheel shift paddles	○ <sup>1</sup>	○ <sup>1</sup>	●

● Standard    ○ Optional    – Not Available



INDIVIDUAL EQUIPMENT (SELECTION)	SLK280	SLK350	SLK55 AMG
<b>CONVENIENCE</b>			
Cruise control	●	●	●
Integrated garage door opener	●	●	●
SmartKey	●	●	●
<b>SAFETY</b>			
Anti-theft alarm system	●	●	●
Two 3-point height-adjustable seat belts	●	●	●
Belt tensioners with belt-force limiters	●	●	●
Dual-front air bags and head/thorax side air bags	●	●	●
First aid kit	●	●	●
TeleAid Emergency Calling System <sup>4</sup>	○ <sup>1</sup>	○ <sup>1</sup>	●
<b>PREMIUM PACKAGES</b>			
	SLK280	SLK350	SLK55 AMG
<b>SLK280:</b>			
AIRSCARF. Fabric wind screen. Heated seats. Heated steering wheel.	○	-	-
<b>SLK350:</b>			
10-way power adjustable seats with power steering column and 3-position memory. AIRSCARF. Fabric wind screen. Heated steering wheel.	-	○	-

**EQUIPMENT PACKAGES**

	SLK280	SLK350	SLK55 AMG
<b>SPORT PACKAGE:</b>			
17" 6-twin spoke alloy wheels. Sports braking system. Perforated front brake discs and brake calipers with Mercedes-Benz lettering. Smoked appearance headlamps. Parameter steering. Sports air filter. AMG trunk lid spoiler. Steering wheel shift paddles. Black roof liner. Decorative red topstitching with matching red seat belts. Carbon trim.	○	○	-
<b>AMG SPORT PACKAGE:</b>			
AMG 17" 5-spoke wheels. AMG Styling Package. Parameter steering. Steering wheel shift paddles.	-	○	-
<b>AMG PERFORMANCE PACKAGE:</b>			
AMG 18" 5-twin spoke wheels. AMG Carbon Fibre trim. AMG leather/Alcantara sport steering wheel. AMG sport suspension with Nürburgring calibration. Internally vented composite brakes.	-	-	○
<b>ENTERTAINMENT PACKAGE:</b>			
SIRIUS Satellite Radio. COMAND with harman/kardon® LOGIC7® surround sound system and MP3-compatible 6-disc CD changer. Cellular Telephone Prewiring. TeleAid Emergency Calling System <sup>4</sup>	○	○	●
<b>BI-XENON HEADLAMPS PACKAGE:</b>			
Bi-Xenon headlamps. Cornering lights. Headlamp washers.	○	●	●
<b>POWER SEATING PACKAGE:</b>			
10-way power adjustable seats with 3-position memory. Power tilt/telescoping steering column.	○	-	●
● Standard    ○ Optional    - Not Available			

<sup>1</sup>Available as part of an option package. <sup>2</sup>Only available in Tobacco Brown. <sup>3</sup>Not available with Sport Package and AMG Sport Package, and if ordered with Premium Package, heated steering wheel is not included. <sup>4</sup>Subscription is required for service to be active. TeleAid operates only where cellular and Global Positioning System coverage is available.

## Crowning glories.



Drive through your kingdom in high-class customized style, with genuine Mercedes-Benz accessories. All Mercedes-Benz accessories are a cut above, having been designed and manufactured to the highest standards for design, engineering, quality, form and function. Added nuance and unique refinement are just the things to make your SLK-Class a distinctively rich driving experience.

### Rear spoiler

An outstanding example of form meeting function. Turn heads with your Rear Spoiler's body-complimenting design, as you simultaneously (and seamlessly) cut through resisting air.



### 17" "Sadachiba" 5-spoke multi-piece alloy wheels

Enjoy added design and extra shine from the high-shine surface of these attractive alloy wheels. Roll along on four wheels of pure strength and style.



### Windscreen

Enjoy a wild yet controlled ride with your choice of three-part transparent or fabric draught stop. Placed directly behind headrests and roll bars, it ingeniously improves aero-acoustics while preventing drafts – for both open roof and closed soft-top.



### iPod® Integration Kit

You've spent time carefully filling your iPod® with the great music you love. Now you can enjoy every minute of every song as you cruise to the tunes, courtesy of the iPod® Integration Kit.







	<b>SLK280</b>	<b>SLK350</b>	<b>SLK55 AMG</b>
Engine type	DOHC 24-valve V-6	DOHC 24-valve V-6	SOHC 24-valve V-8
Total displacement	2,996-cc	3,498-cc	5,439-cc
Net power	228 hp @ 6,000 rpm	268 hp @ 6,000 rpm	355 hp @ 5,750 rpm
Net torque	221 lb-ft @2,500-5,000 rpm	258 lb-ft @2,400-5,000 rpm	376 lb-ft @4,000 rpm
Acceleration <sup>1</sup> , 0-100 km/h	6.3 seconds	5.6 seconds	4.9 seconds
Approximate top speed <sup>2</sup>	250 km/h	250 km/h	250 km/h
Tires, front	205/55 R 16	225/45 R 17	225/40 R 18
rear	225/50 R 16	245/40 R 17	245/35 R 18
Fuel economy <sup>3</sup> , city/highway estimate	11.9-8.1 L/100 km	12.3-8.6 L/100 km	15.0-9.8 L/100 km
Fuel tank capacity	70.0 litres (with 9.0-litre reserve)	70.0 litres (with 9.0-litre reserve)	70.0 litres (with 9.0-litre reserve)
Fuel requirement	Premium unleaded gasoline	Premium unleaded gasoline	Premium unleaded gasoline
Dimensions <sup>4</sup>			
Wheelbase	95.7 in/2,430 mm	95.7 in/2,430 mm	95.7 in/2,430 mm
Overall length	159.5 in/4,089 mm	159.5 in/4,089 mm	159.5 in/4,089 mm
Overall height	50.5 in/1,296 mm	50.5 in/1,296 mm	50.5 in/1,296 mm
Overall width incl. mirrors	76.8 in/1,969 mm	76.8 in/1,969 mm	76.8 in/1,969 mm
Curb weight	3,255 lb/1,475 kg	3,295 lb/1,495 kg	3,420 lb/1,550 kg
Trunk capacity	6.7 cu ft/190 litres	6.7 cu ft/190 litres	6.7 cu ft/190 litres

<sup>1</sup>Stated rates of acceleration are based upon the manufacturer's track results and may vary depending upon model, environmental and road surface conditions, driving style, elevation and vehicle load. <sup>2</sup>Electronically limited. <sup>3</sup>These estimates are based on Transport Canada testing methods. The actual fuel consumption of this vehicle may vary. Refer to the *Fuel Consumption Guide*. <sup>4</sup>Dimensions shown are for models with standard equipment.

## A passion for things done right.

It's what you expect from Mercedes-Benz. A passion for craftsmanship and attention to detail is what sets Mercedes-Benz apart from all other manufacturers. This passion drives us to set new standards in design, performance, comfort and safety. To continually build on the legendary traditions of Mercedes-Benz. And to provide you with an ownership experience unlike any other, including the valuable benefits described below.

### 24-hour Roadside Assistance

During the basic warranty coverage of 48 months and the time duration of the optional Extended Limited Warranty, Mercedes-Benz Roadside Assistance will be at your service. We'll bring you some gas, replace a flat tire with your spare, or jumpstart your car. In the event of a mechanical breakdown, if attempts by our Roadside Assistance technician have not made your vehicle safely operable, towing service will be provided to the nearest Mercedes-Benz dealership. Assistance is available 24 hours a day, every day, to anyone driving a Mercedes-Benz anywhere in Canada or the continental U.S.<sup>1</sup>

### Wear and tear coverage

For 24 months or 40,000 km (whichever comes first) many items normally considered "wear and tear", such as light bulbs, brake pads and discs, are covered. If necessary, an authorized Mercedes-Benz dealer will replace these parts at no charge to you.

### Mercedes-Benz warranties

The Mercedes-Benz New Vehicle Limited Warranty covers defects in materials or workmanship for 48 months or 80,000 km, whichever occurs first. To widen your window of confidence, you can opt for a Mercedes-Benz Extended Limited Warranty as well.<sup>2</sup>

### Customer service

Owning a Mercedes-Benz means that when you have a question, we're here to help. Customer Service is open from 9 a.m. to 5 p.m. EST, Monday through Friday, and is staffed with knowledgeable Mercedes-Benz people who can talk you through the finer points of working your car's audio system – or even assist you in locating the nearest Mercedes-Benz dealership. Just call 1-800-387-0100. It's that simple.

### Trip interruption reimbursement

If a breakdown covered by your New Vehicle Limited Warranty occurs more than 80 km from your home, leaves your Mercedes-Benz vehicle inoperable or unsafe to drive, and requires overnight repairs, we've got you covered. You will be reimbursed up to \$500 for hotel accommodations and up to \$600 for alternate travel expenses per incident while your car is being repaired at an authorized Mercedes-Benz dealership.

**Log on to learn more**  
**[mercedes-benz.ca](http://mercedes-benz.ca)**

Looking for more Mercedes-Benz information? Visit [mercedes-benz.ca](http://mercedes-benz.ca) to open an online window to Mercedes-Benz Canada. Get information about any model, including financing and leasing options, upcoming vehicles, or purchase Mercedes-Benz the Collection gifts and personal accessories. Our website also offers details about the Mercedes-Benz Extended Limited Warranty, Mercedes-Benz Ownership, and the history of Mercedes-Benz.



<sup>1</sup>Vehicle must be accessible from main roads. Roadside Assistance may involve charges for parts, service and towing. Depending on the circumstances, these services may be provided by an outside service provider, courtesy of Mercedes-Benz Roadside Assistance. For full details of the Roadside Assistance Program, please see your dealer. <sup>2</sup>Please see your dealer for warranty details as well as for terms, conditions and pricing for extended warranty options.



Mercedes-Benz

© 2007 Mercedes-Benz Canada Inc.

All illustrations and specifications contained in this brochure are based on the latest product information available at the time of publication. Mercedes-Benz Canada reserves the right to make changes at any time, without notice, in colours, materials, equipment, specifications and models. Any inaccuracies in colours shown are due to reproduction variations of the printing process. Some vehicles may be shown with non-Canadian equipment. Some vehicles may be shown without side marker lights. Some vehicles are shown with optional equipment available at extra cost. Some optional equipment may not be available on all models. For current information regarding the range of models, standard features, optional equipment and/or colours available in Canada and their pricing, contact your nearest authorized Mercedes-Benz dealer or visit [mercedes-benz.ca](http://mercedes-benz.ca). harman/kardon and LOGIC7 are registered trademarks of Harman International Industries Inc. iPod is a registered trademark of Apple Computer, Inc.

Printed in Canada  
MBC-07-SLK08-9800

Mercedes-Benz Canada Inc. 98 Vanderhoof Avenue. Toronto, Ontario M4G 4C9  
1-800-387-0100  
[www.mercedes-benz.ca](http://www.mercedes-benz.ca)