

2008 B-CLASS



Mercedes-Benz





## The B-Class. A completely new kind of Mercedes-Benz.

What do you desire in a new car? Versatility? Safety? Performance?

The B-Class saves you from having to choose. It combines the advantages of many different vehicles to create a completely new kind of Mercedes-Benz that is both practical and luxurious – so it caters to your active lifestyle.

This sporty premium car provides exceptional ride comfort, sophisticated safety systems, a generous amount of space, and plenty of performance. All of this is remarkably captured in an eye-catching 4.27-metre long body.

## The B-Class

<b>DESIGN</b>	
Exterior design	4
Interior design	6
Seating comfort	8
Entertainment	10
Versatility	12
<hr/>	
<b>DYNAMICS</b>	
Engines and transmissions	14
Handling	16
<hr/>	
<b>SAFETY</b>	
Sandwich design	20
Safety features	22
<hr/>	
<b>COLOURS AND MATERIALS</b>	
Paint, combination options	26
Upholstery and trim	28
<hr/>	
<b>EQUIPMENT</b>	
Equipment listing	30
Premium and Sport Packages	32
Accessories	34
<hr/>	
<b>TECHNICAL FEATURES</b>	
Technical data	36
<hr/>	
<b>MERCEDES-BENZ OWNERSHIP AND WEBSITE</b>	
	37







## When looks matter.

What is the shape of versatility? What does comfort look like? The B-Class has all the answers. It gives you versatility and spaciousness with a truly sporty flare. The front hood flows down into the broad silver radiator grille creating a wedge shape. This is underlined by the large air intakes in the bumpers and the wide-eyed design of the headlamps. The forward sloping side contours, together with the flared wheel arches, add a powerful touch. For more individuality and flare, you also have the choice of three solid paint finishes – or upgrade to one of six sleek metallic finishes. Combined with extraordinary versatility, the look of the B-Class shows you why it stands alone.

### HEADLAMPS

The distinctive headlamps set the tone at the front of the B-Class. At the rear, the horizontally split tail lights are an eye-catching feature. Exterior chrome trim adds an elegant touch all around.

### WHEELS

From stylish to sporty, the B-Class wheels attract admiration from the word “go.” 16" 5-spoke alloy wheels complement the self-assured style of the B200. The B200 Sport Package has been designed to cater to the sport enthusiast’s passions, offering 17" 10-spoke alloy wheels. Giving you that extra edge and boost in performance, try the B200 TURBO Sport Package and revel in its alluring AMG 17" 5-spoke wheels with performance tires<sup>1</sup>.

<sup>1</sup>Not recommended for winter use.





## Stylish through and through.

The B-Class interior is remarkably generous in terms of both space and comfort given its compact exterior. Every drive should leave a lasting impression, and so the B-Class focuses on the little details. The cockpit follows an organic design. When it comes to beauty, luxury and practicality, the B-Class is beyond reproach.

Beauty and comfort have been brought together to create the practical yet stylish B200 seats that are upholstered in Utrecht fabric and come in a selection of colours to best suit your desires: Black, Orient Beige and Alpaca Grey. The ARTICO leather<sup>1</sup>/Maastricht fabric combination comes standard on the B200 TURBO, which also offers a sumptuous leather option.

And to ensure every drive provides you with the best possible comfort and seating position, all B-Class models come standard with 8-way manually adjustable front seats with height and angle control, and telescopic steering column adjustment.

### DRIVER-FRIENDLY DETAILS

Driving doesn't get much better than when you're behind the wheel of the B-Class. Its dramatic interior is rich in details, including chrome-ringed instrumentation and aluminium trim. Rubber-studded aluminium pedals<sup>2</sup>, leather-wrapped multifunction steering wheel and shift knob add to the experience and put all the controls at your fingertips. The ergonomic centre console is very user friendly, so you can keep your eyes on the road.

<sup>1</sup>Man-made leather. <sup>2</sup>Standard on the B200 TURBO only.











## Comfort is not an option.

The little things are what make a car stand apart. It's all in the finishes. For example: the B-Class seats are hand fitted. Whether you choose the refined leather trimmings or the extensive range of fabric combinations, you are guaranteed satisfaction.

Your control over comfort extends past the smooth seat coverings, with 8-way manual control of the driver and front passenger seats. Plus, the seats are fitted with extra lumbar support to make even long drives exceptionally comfortable. Power adjustable seats highlight the B200 TURBO Premium Package, and for that extra indulgence, heated front seats<sup>1</sup> have been included to counter those chilly morning commutes.

For even more comfort, the B-Class offers THERMATIC automatic climate control, with its ability to monitor the interior temperature and adjust the heating and cooling system as needed. Some may even say that the B-Class has a mind of its own.

For that added touch, the optional panoramic lamella sunroof surrounds you with warm summer days, soft sunsets and starry nights. The front louvre tilts upwards, acting as a wind deflector while the other four louvres slide back to the desired position.

<sup>1</sup>Optional on the B200. Standard on the B200 TURBO.

## You will be entertained.

When it comes to entertainment, the B-Class is ready to roll. It is fitted with a single CD player and an AM/FM/weatherband radio. These are greatly enhanced by extensive steering wheel audio controls – so you can control the sound without taking your eyes off the road. The B-Class even goes a step further, with an auxiliary input for any MP3 player or audio device in the glove box.

If you'd like even more sensational audio, consider upgrading to the 320-watt harman/kardon® LOGIC7® surround sound system with 6-disc CD changer as part of the Entertainment Package. Also available in this package is SIRIUS Satellite Radio<sup>1</sup>, with 110 channels of premium sports, music and entertainment.

### COMAND

The optional COMAND system for the B200 TURBO<sup>2</sup> allows you to control the audio by way of a large 6.5" colour LCD screen in the centre console. But there's more: the COMAND system not only lets you control most of the B-Class' vehicle settings, but also gives you GPS satellite navigation. A single disc holds complete road maps of both Canada and the US, arming you for any adventure.

Smooth surround sound powers through the harman/kardon® speakers. With its 6-disc CD changer, you have every mood at your fingertips.



<sup>1</sup>Monthly subscription required for service. <sup>2</sup>Not available on the B200.









## Built for living.

The B-Class is ready to tackle all the big and small things life throws at you. Don't be deceived by its compact 4.27-metre length – its interior gives you an amazing amount of highly versatile cargo space.

With the rear seats occupied, the back cargo area has an impressive capacity of up to 544 litres, easily handling everything from sports gear to mid-sized furniture. Even so, the back seat provides as much leg room, shoulder room and head room as a luxury sedan.

But if you're wondering just how much you can take along on your travels, you can configure the B-Class to accommodate an astonishing 1,530 litres of cargo with the rear seats folded down. This makes it perfect for active living, no matter what your activity of choice may be.

## Performance on a grand scale.

### ENGINES

The B-Class is always in top form. The B200 TURBO generates an outstanding 193 hp with 206 lb-ft of torque, while the B200 offers 134 hp and 136 lb-ft of torque. The B-Class draws its power from a 4-cylinder inline engine, making your drive spirited while also conserving fuel.

### TRANSMISSIONS

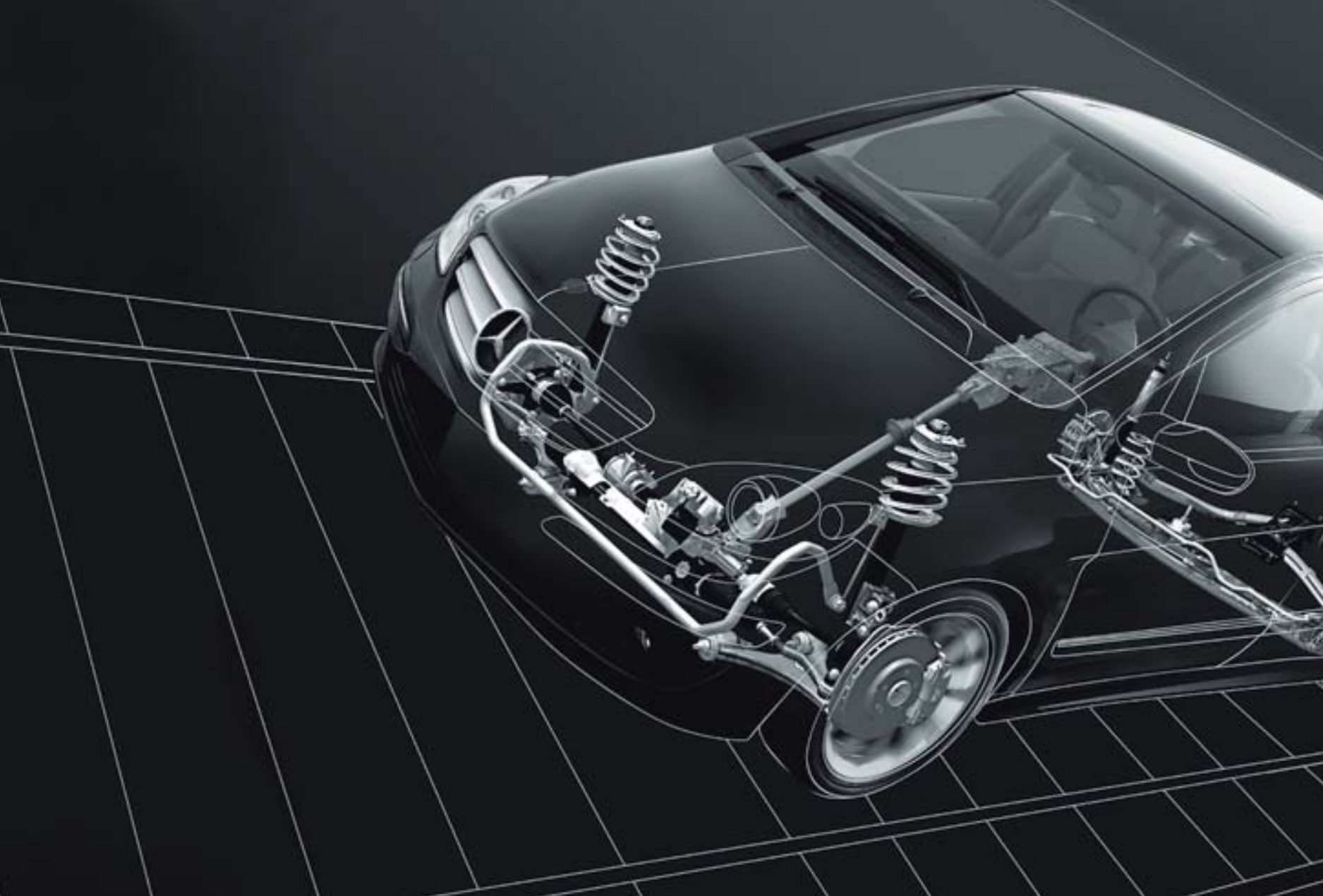
Whether you're a sporty or relaxed driver, the B-Class' transmission masters any style with ease. The B200 comes with a 5-speed manual transmission, while the B200 TURBO features a 6-speed manual transmission.

Our optional AUTOTRONIC continuously variable automatic transmission recognizes your personal driving style and adjusts itself accordingly. Instead of using gears like a conventional transmission, it uses pulleys and sliding discs to provide the ideal gear ratio at all times. This means your B-Class always accelerates smoothly with no lags in power. And because the engine always operates in the optimum engine-speed range, AUTOTRONIC also ensures low fuel consumption. For a more intense driving experience, you can even change manually between virtual gears by nudging the selector lever.













## Stay smooth.

The B-Class manages to deliver both comfortable and responsive driving thanks to its advanced suspension, unusually wide track and the longest wheelbase in its class. It also comes equipped with shock absorbers and a selective damping system that no other car in its class offers. The B-Class' suspension reacts smoothly to bumps in the road, adapting the damping as required. The parabolic axle makes the suspension more stable in corners, improves wheel location and reduces tire wear.

For more adventurous drivers, there is the option of the Sport Package, which provides increased stability when cornering and gives you an even greater grip on that bumpy road. All of this ensures that the B-Class handles with agility and precision, even with a full load.





## How a sandwich could save your life.

Safety is another strength of the B-Class.

Its entire design is based on the unique sandwich concept. In the event of a frontal impact, the engine and transmission are able to slide down along the angled pedal floor and below the passenger compartment.

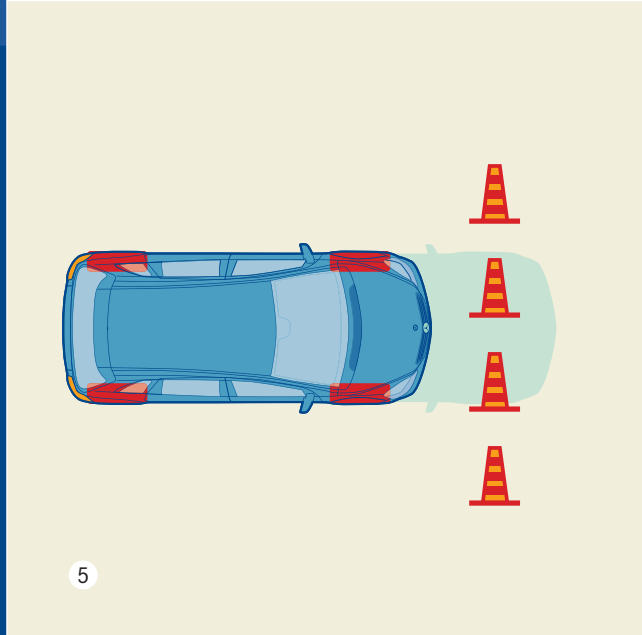
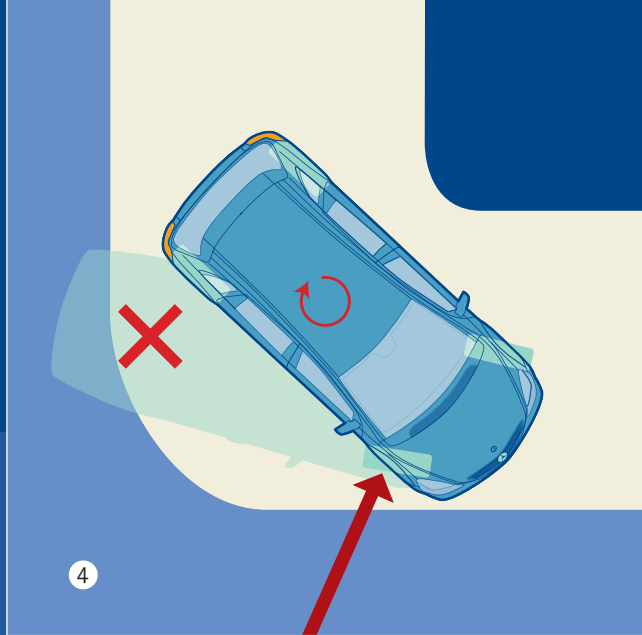
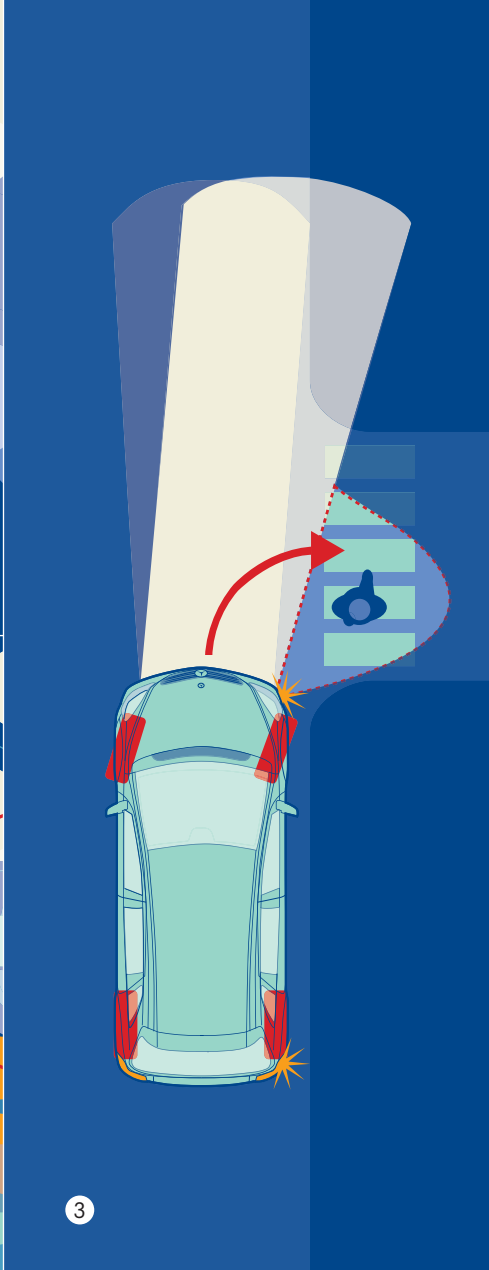
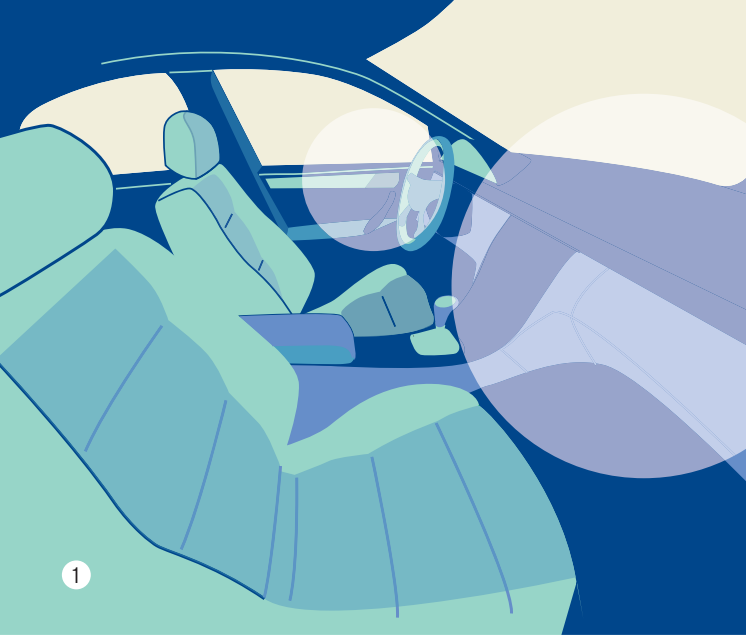
Because your seating position is slightly higher in the B-Class than in a conventional car, the sandwich concept is also a crucial advantage in the event of a side-on collision. It also means that you benefit from better all-round visibility.











## The B-Class gets an “A” in safety.

### SIX STANDARD AIR BAGS

Every B-Class provides the protection of six standard air bags, including adaptive dual-stage front air bags, two side-impact air bags and window-curtain air bags that expand between the A and C-pillars, providing extra protection for all four outboard occupants. (1)

### ADVANCED SEAT BELTS

All four outboard seat belts feature Emergency Tensioning Devices (ETDs), which help remove seat-belt slack in a sufficiently severe front or rear impact. Belt force limiters are also included, helping to reduce the peak deceleration forces on belted occupants. (2)

### ACTIVE BI-XENON HEADLAMPS WITH CORNERING LIGHTS

Truly visionary thinking, the optional Active Bi-Xenon headlamps<sup>1</sup> monitor your steering angle and driving speed, then swivel their beams to either side to better follow the curvature of the road ahead. As a result, you get a better view into corners, with illumination improved by up to 90% over conventional headlamps. (3)

### ELECTRONIC STABILITY PROGRAM AND STEER CONTROL

The Electronic Stability Program (ESP®) can dramatically enhance cornering control by monitoring your steering and braking actions and responding nearly instantaneously if it detects a loss of directional control or stability. If your B-Class begins to fishtail (oversteer) or plow (understeer), ESP® can apply the brakes to any of the four wheels or reduce excess power to help you regain control and stay on course<sup>2</sup>. ESP® is complemented by our traction control system (ASR). On uneven surfaces or in inclement weather, ASR prevents the wheels from inadvertently spinning during acceleration.

Our STEER CONTROL steering assistance system helps the driver stabilize the vehicle. If the vehicle starts to skid, a clear impulse in the steering wheel helps the driver counter-steer in the correct direction. (4)

### BRAKE ASSIST (BAS)

Brake Assist (BAS) recognizes emergency braking by the speed at which you apply the brake pedal. When emergency braking is detected, BAS instantly applies full brake pressure. This compensates for a driver’s tendency to apply less brake pressure than necessary in panic situations. (5)

<sup>1</sup>Only available on the B200 TURBO. <sup>2</sup>No system, regardless of how advanced, can overcome the laws of physics or correct careless driving. Please always wear your seat belt. Best performance in snow is obtained with winter tires.





Show your true colours.



Colour is the most personal choice of all. So which one expresses you best? And which interior do you choose to live in? After all, the perfect finishing details are what make an automotive masterpiece. And here's a reassuring thought: both solid and metallic paint finishes benefit from an extra scratch-resistant clearcoat. This makes your colour less susceptible not only to scratches, but also to sunlight, temperature variations, dust and soot.

	UTRECHT FABRIC			ARTICO LEATHER / MAASTRICHT FABRIC			LEATHER			ARTICO LEATHER / ZANDVOORT FABRIC		
	Black	Orient Beige	Alpaca Grey	Black	Orient Beige	Alpaca Grey	Black	Orient Beige	Alpaca Grey	Black	Orient Beige	Alpaca Grey
<b>SOLID PAINT</b>												
Jupiter Red	●	○	●	●	○	●	●	○	●	●	○	●
Calcite White	●	○	●	●	○	●	●	○	●	●	○	●
Nocturnal Black	●	●	●	●	●	●	●	●	●	●	●	●
<b>METALLIC PAINT</b>												
Cosmos Black	●	●	●	●	●	●	●	●	●	●	●	●
Atoll Blue	●	●	●	●	●	●	●	●	●	●	●	●
Horizon Blue	●	○	○	●	○	○	●	○	○	●	○	○
Saturn Red	●	●	●	●	●	●	●	●	●	●	●	●
Comet Grey	●	○	●	●	○	●	●	○	●	●	○	●
Polar Silver	●	○	●	●	○	●	●	○	●	●	○	●

● Recommended combination

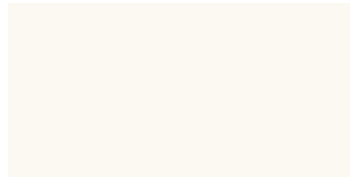
○ Possible combination



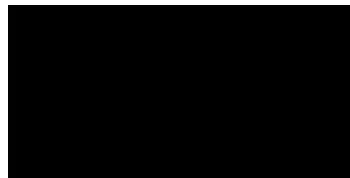
SOLID PAINT



589 Jupiter Red



650 Calcite White



696 Nocturnal Black

METALLIC PAINT (OPTIONAL)



191 Cosmos Black



375 Atoll Blue



391 Horizon Blue



597 Saturn Red



748 Comet Grey



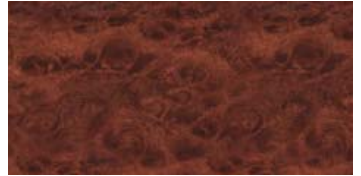
761 Polar Silver



## TRIM



739 Aluminium

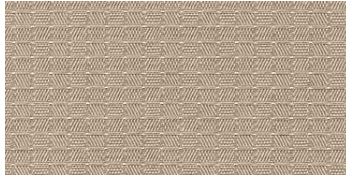


727 Myrtle Wood Trim

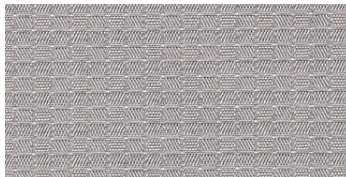
UTRECHT FABRIC



451 Black

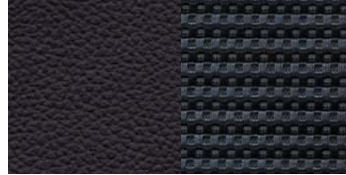


455 Orient Beige

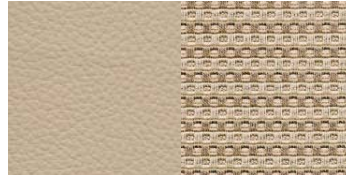


458 Alpaca Grey

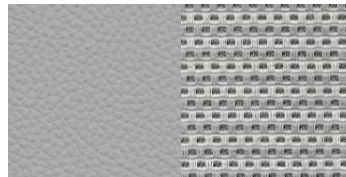
ARTICO LEATHER/  
MAASTRICHT FABRIC



701 Black



705 Orient Beige



708 Alpaca Grey

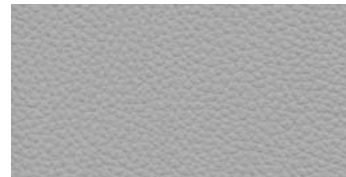
LEATHER



801 Black



805 Orient Beige



808 Alpaca Grey

ARTICO LEATHER/  
ZANDVOORT FABRIC  
(SPORT SEATS)



751 Black

INDIVIDUAL EQUIPMENT (SELECTION)	B200	B200 TURBO
<b>TRANSMISSION</b>		
5-speed manual transmission	●	–
6-speed manual transmission	–	●
AUTOTRONIC continuously variable automatic transmission	○	○
<b>TRACTION/STABILITY</b>		
Speed-sensitive power steering with STEER CONTROL	●	●
Electronic Stability Program (ESP®) including ABS and traction control (ASR)	●	●
Brake Assist (BAS)	●	●
Selective damping system	●	●
Parabolic rear axle	●	●
Sport suspension	○ <sup>1</sup>	○ <sup>1</sup>
<b>AUDIO/VISUAL/COMMUNICATION</b>		
CD player with AM/FM/weatherband radio	●	●
Auxiliary input in glove box	●	●
COMAND APS with navigation	–	○
Electronic compass	○ <sup>1</sup>	○ <sup>1</sup>
harman/kardon® LOGIC7® surround sound system with MP3-compatible 6-disc CD changer	○ <sup>1</sup>	○ <sup>1</sup>
SIRIUS Satellite Radio <sup>2</sup>	○ <sup>1</sup>	○ <sup>1</sup>
Cellular Telephone Prewiring	○ <sup>1</sup>	○ <sup>1</sup>
<b>EXTERIOR</b>		
16" 5-spoke alloy wheels	●	–
16" 5-twin spoke alloy wheels	–	●
17" 10-spoke alloy wheels	○ <sup>1</sup>	–
AMG 17" 5-spoke alloy wheels	–	○ <sup>1</sup>

INDIVIDUAL EQUIPMENT (SELECTION)	B200	B200 TURBO
Projection-beam headlamps and integrated fog lamps	●	●
Exterior Sight & Light Package	○ <sup>1</sup>	●
Active Bi-Xenon headlamps with washers and cornering lights	–	○ <sup>1</sup>
Electronically adjustable heated exterior mirrors	●	●
Rear windscreen wiper with intermittent wipe setting and one-touch control	●	●
Heated windshield washer system	●	●
Rain-sensing windshield wipers	○ <sup>1</sup>	●
Exterior Chrome Package	●	●
Door sill panels with aluminium inserts, front panels featuring "Mercedes-Benz" lettering	●	●
Tinted glass	●	●
<b>INTERIOR</b>		
Utrecht Fabric upholstery	●	–
ARTICO leather <sup>3</sup> /Maastricht fabric upholstery	–	●
Leather upholstery	–	○ <sup>4</sup>
ARTICO leather <sup>3</sup> /Zandvoort fabric upholstery <sup>5</sup> (sport)	○ <sup>1</sup>	○ <sup>1</sup>
Aluminium trim	●	●
Myrtle wood trim	○ <sup>1</sup>	○ <sup>1</sup>
Driver and front passenger seat with manual height, angle and lumbar adjustment	●	●
8-way power-adjustable driver and front passenger seat	–	○ <sup>1</sup>
Heated front seats	○	●
Front sport seats	○ <sup>1</sup>	○ <sup>1</sup>
Active front head restraints	●	●
60/40 split-folding rear seatbacks with flip-forward seat cushions	●	●

INDIVIDUAL EQUIPMENT (SELECTION)	B200	B200 TURBO
Steering column with manual height and telescopic adjustment	●	●
Leather-wrapped multifunction steering wheel and shift knob	●	●
THERMATIC automatic climate control	●	●
THERMOTRONIC dual-zone automatic climate control	-	○ <sup>1</sup>
Panoramic lamella sunroof	○	○
Outside temperature display	●	●
Auto-dimming rear view mirror	○ <sup>1</sup>	●
Illuminated visor vanity mirrors	●	●
Storage net on front seatbacks	●	●
Height-adjustable load compartment floor	●	●
Retractable load compartment cover	●	●
Bottle holders in doors, cup holders in centre console	●	●
Power windows, with one-touch express-up/down	●	●
<b>CONVENIENCE</b>		
Cruise control	●	●
SmartKey with electronic immobilizer	●	●
<b>SAFETY</b>		
3-point seat belts (four), height-adjustable in front, with automatic height adjustment in rear	●	●
Dual-front air bags, head/thorax side-impact air bags and window-curtain air bags	●	●
Belt tensioners with belt-force limiters	●	●
ISOFIX child seat mounts	●	●
Tire Pressure Loss Warning System	●	●
Anti-theft alarm system with interior motion sensor	○ <sup>1</sup>	○ <sup>1</sup>

**PREMIUM PACKAGES**

	B200	B200 TURBO
<b>B200:</b> Heated front seats. Rain-sensing windshield wipers. Myrtle wood trim. Auto-dimming rear view mirror. Exterior Sight & Light Package. Electronic compass.	○	-
<b>B200 TURBO:</b> 8-way power-adjustable driver and front passenger seats. Myrtle wood trim. THERMOTRONIC dual-zone automatic climate control. Panoramic lamella sunroof. Electronic compass.	-	○

**OPTION PACKAGES**

	B200	B200 TURBO
<b>B200 SPORT PACKAGE:</b> 17" 10-spoke alloy wheels. ARTICO leather/Zandvoort fabric upholstery. Front sport seats. Sport suspension. Performance tires.	○	-
<b>B200 TURBO SPORT PACKAGE:</b> AMG 17" 5-spoke alloy wheels. ARTICO leather/Zandvoort fabric upholstery. Front sport seats. Sport suspension. Performance tires.	-	○
<b>ENTERTAINMENT PACKAGE:</b> harman/kardon® LOGIC7® surround sound system with MP3-compatible 6-disc CD changer. SIRIUS Satellite Radio <sup>2</sup> . Cellular Telephone Prewiring.	○	○
<b>BI-XENON HEADLAMPS PACKAGE:</b> Active Bi-Xenon headlamps. Cornering lights. Headlamp washers.	-	○
<b>ALARM SYSTEM PACKAGE:</b> Anti-theft alarm system. Interior motion sensor. SmartKey with panic button.	○	○

● Standard    ○ Optional    - Not available

<sup>1</sup>Available as part of an option package. <sup>2</sup>Monthly subscription required for service. <sup>3</sup>Man-made leather. <sup>4</sup>Not available with the Sport Package. <sup>5</sup>Only available in conjunction with the Sport Package.

## Complete the package with an upgrade package.

### PREMIUM PACKAGES

Settle back in the heated front seats<sup>1</sup> of a B-Class equipped with the Premium Package and watch the heads turn as you take it to the street. With rain-sensing windshield wipers, cruise control, an electronic compass, an auto-dimming rear view mirror and our Exterior Sight & Light Package, this vehicle commands attention.

The B200 TURBO Premium Package takes everything up a notch, thinking about every small detail. That's why this package includes 8-way power-adjustable driver and front passenger seats, and an electronic compass to help you find that picture perfect vacation destination. Also featured is a panoramic lamella sunroof to bring those scenic moments closer to you, and our THERMOTRONIC dual-zone automatic climate control that lets the driver and front passenger adjust their temperature separately.

Both Premium Packages include handsome Myrtle wood trim as a luxurious finishing touch.

Who said you couldn't have it all?

### SPORT PACKAGE

Our all-new Sport Package for the B200 and B200 TURBO gives you everything you need to make the most out of energetic driving.

The front sport seats' black ARTICO leather and Zanvoort fabric upholstery match the exterior of the vehicle perfectly. The sport suspension system gives you that extra edge. And, for an aggressive look, you'll get 17" 10-spoke alloy wheels on the B200 or AMG 17" 5-spoke alloy wheels on the B200 TURBO. Performance tires complete the package, ensuring that your B-Class will stick to the road, and the minds of all who see it.

<sup>1</sup>Standard on the B200 TURBO.





## Accessorize at will.



If you want to give your B-Class an even sportier look, you'll find exactly what you're looking for with our complete line of accessories. Our body styling kit, which includes a rear apron, a roof spoiler and front apron spoiler lips, will make your B-Class look as dynamic as possible. And we offer a wide range of other accessories that can help make your B-Class uniquely yours.

### Rear roof spoiler

Our body styling kit includes a rear-apron trim, a roof spoiler and front apron spoiler lips. It will make your B-Class look even more dynamic and make you feel even better driving it.



### Designer wheel

We've literally re-designed the wheel to fit your exclusive personality. Roll with our designer 17" "Zaurak" 7-spoke alloy wheels, finished in titanium silver.



### Roof rack or box

If you're looking for additional storage space, there's a spacious roof box with an elegant design. Available in three versions, it has a capacity of approximately 330 to 450 litres.



### iPod® Integration Kit

You've spent time carefully filling your iPod® with the great music you love. Now you can enjoy every minute of every song as you cruise in your B-Class, courtesy of the iPod® Integration Kit.







	<b>B200</b>	<b>B200 TURBO</b>
Engine type	Inline-4	Inline-4
Total displacement	2,034-cc	2,034-cc
Net power	134 hp @ 5,750 rpm	193 hp @ 5,000 rpm
Net torque	136 lb-ft @ 3,500-4,000 rpm	206 lb-ft @ 1,800-4,850 rpm
Acceleration <sup>1</sup> , 0-100 km/h	10.1 seconds	7.6 seconds
Approximate top speed	196 km/h	210 km/h <sup>2</sup>
Tires, front rear	205/55 R 16 205/55 R 16	205/55 R 16 205/55 R 16
Fuel economy <sup>3</sup> , city/highway estimate	manual: 9.2-6.7 L/100 km automatic: 9.2-7.2 L/100 km	manual: 10.2-6.9 L/100 km automatic: 9.5-7.4 L/100 km
Fuel tank capacity	54.0 litres (with 6.0-litre reserve)	54.0 litres (with 6.0-litre reserve)
Fuel requirement	Premium unleaded gasoline	Premium unleaded gasoline
Dimensions <sup>4</sup>		
Wheelbase	109.4 in/2,778 mm	109.4 in/2,778 mm
Overall length	168.1 in/4,270 mm	168.1 in/4,270 mm
Overall height	63.1 in/1,604 mm	63.1 in/1,604 mm
Overall width incl. mirrors	77.8 in/1,975 mm	77.8 in/1,975 mm
Curb weight	2,965 lb/1,345 kg	3,020 lb/1,370 kg
Cargo capacity		
Rear seats in use	19.1 cu ft/544 litres	19.1 cu ft/544 litres
Rear seats lowered	54.0 cu ft/1,530 litres	54.0 cu ft/1,530 litres

<sup>1</sup>Stated rates of acceleration are based on the manufacturer's track results and may vary depending upon model, environmental and road surface conditions, driving style, elevation and vehicle load. <sup>2</sup>Electronically limited. <sup>3</sup>These estimates are based on Transport Canada testing methods. The actual fuel consumption of this vehicle may vary. Refer to the *Fuel Consumption Guide*. <sup>4</sup>Dimensions shown are for models with standard equipment.

## A passion for things done right.

It's what you expect from Mercedes-Benz. A passion for craftsmanship and attention to detail is what sets Mercedes-Benz apart from all other manufacturers. This passion drives us to set new standards in design, performance, comfort and safety. To continually build on the legendary traditions of Mercedes-Benz. And to provide you with an ownership experience unlike any other, including the valuable benefits described below.

### 24-hour Roadside Assistance

During the basic warranty coverage of 48 months and the time duration of the optional Extended Limited Warranty, Mercedes-Benz Roadside Assistance will be at your service. We'll bring you some gas, replace a flat tire with your spare, or jumpstart your car. In the event of a mechanical breakdown, if attempts by our Roadside Assistance technician have not made your vehicle safely operable, towing service will be provided to the nearest Mercedes-Benz dealership. Assistance is available 24 hours a day, every day, to anyone driving a Mercedes-Benz anywhere in Canada or the continental U.S.<sup>1</sup>

### Wear and tear coverage

For 24 months or 40,000 km (whichever comes first) many items normally considered "wear and tear", such as light bulbs, brake pads and discs, are covered. If necessary, an authorized Mercedes-Benz dealer will replace these parts at no charge to you.

### Mercedes-Benz warranties

The Mercedes-Benz New Vehicle Limited Warranty covers defects in materials or workmanship for 48 months or 80,000 km, whichever occurs first. To widen your window of confidence, you can opt for a Mercedes-Benz Extended Limited Warranty as well.<sup>2</sup>

### Customer service

Owning a Mercedes-Benz means that when you have a question, we're here to help. Customer Service is open from 9 a.m. to 5 p.m. EST, Monday through Friday, and is staffed with knowledgeable Mercedes-Benz people who can talk you through the finer points of working your car's audio system – or even assist you in locating the nearest Mercedes-Benz dealership. Just call 1-800-387-0100. It's that simple.

### Trip interruption reimbursement

If a breakdown covered by your New Vehicle Limited Warranty occurs more than 80 km from your home, leaves your Mercedes-Benz vehicle inoperable or unsafe to drive, and requires overnight repairs, we've got you covered. You will be reimbursed up to \$500 for hotel accommodations and up to \$600 for alternate travel expenses per incident while your car is being repaired at an authorized Mercedes-Benz dealership.

**Log on to learn more at  
mercedes-benz.ca**

Looking for more Mercedes-Benz information? Visit [mercedes-benz.ca](http://mercedes-benz.ca) to open an online window to Mercedes-Benz Canada. Get information about any model, including financing and leasing options, upcoming vehicles, or purchase Mercedes-Benz the Collection gifts and personal accessories. Our website also offers details about the Mercedes-Benz Extended Limited Warranty, Mercedes-Benz Ownership, and the history of Mercedes-Benz.



<sup>1</sup>Vehicle must be accessible from main roads. Roadside Assistance may involve charges for parts, service and towing. Depending on the circumstances, these services may be provided by an outside service provider, courtesy of Mercedes-Benz Roadside Assistance. For full details of the Roadside Assistance Program, please see your dealer. <sup>2</sup>Please see your dealer for warranty details as well as for terms, conditions and pricing for extended warranty options.



Mercedes-Benz

© 2007 Mercedes-Benz Canada Inc.

All illustrations and specifications contained in this brochure are based on the latest product information available at the time of publication. Mercedes-Benz Canada reserves the right to make changes at any time, without notice, in colours, materials, equipment, specifications and models. Any inaccuracies in colours shown are due to reproduction variations of the printing process. Some vehicles may be shown with non-Canadian equipment. Some vehicles may be shown without side marker lights. Some vehicles are shown with optional equipment available at extra cost. Some optional equipment may not be available on all models. For current information regarding the range of models, standard features, optional equipment and/or colours available in Canada and their pricing, contact your nearest authorized Mercedes-Benz dealer or visit [mercedes-benz.ca](http://mercedes-benz.ca). harman/kardon and LOGIC7 are registered trademarks of Harman International Industries Inc. iPod is a registered trademark of Apple Computer, Inc.

Printed in Canada  
MBC-07-B08-24010

Mercedes-Benz Canada Inc. 98 Vanderhoof Avenue. Toronto, Ontario M4G 4C9  
1-800-387-0100  
[www.mercedes-benz.ca](http://www.mercedes-benz.ca)