



Mercedes-Benz

E 350 Luxury Sedan shown on front cover in optional Iridium Silver metallic paint with optional Premium 2 Package.

©2007 Mercedes-Benz USA, LLC • One Mercedes Drive, Montvale, NJ 07645 • 1-800-FOR-MERCEDES • MBUSA.com

Marketing Communications. All illustrations and specifications contained in this brochure are based on the latest product information available at the time of publication. Mercedes-Benz reserves the right to make changes at any time, without notice, to colors, materials, equipment, specifications and models. Any variations in colors shown are due to reproduction variations of the printing process. Illustrations may include test situations. Some vehicles may be shown with non-U.S. equipment. Some vehicles are shown with optional equipment. HomeLink® is a registered trademark of Prince, a Johnson Controls Company. harman/kardon® and LOGIC7® are registered trademarks of Harman International Industries, Inc. iPod is a registered trademark of Apple Computer, Inc.

♻️ In an effort to minimize the environmental impact of this brochure, Mercedes-Benz uses a recycled coated paper that is guaranteed in writing to contain a minimum of 10% post-consumer waste.

Printed in U.S.A./200 MC-07-779

2008 MERCEDES-BENZ E-CLASS



# E-CLASS

2008

E 350

E 320 BLUETEC

E 550

E 63 AMG



E 350 Sport Sedan shown in optional Pewter metallic paint.



Mercedes-Benz. Unlike any other.

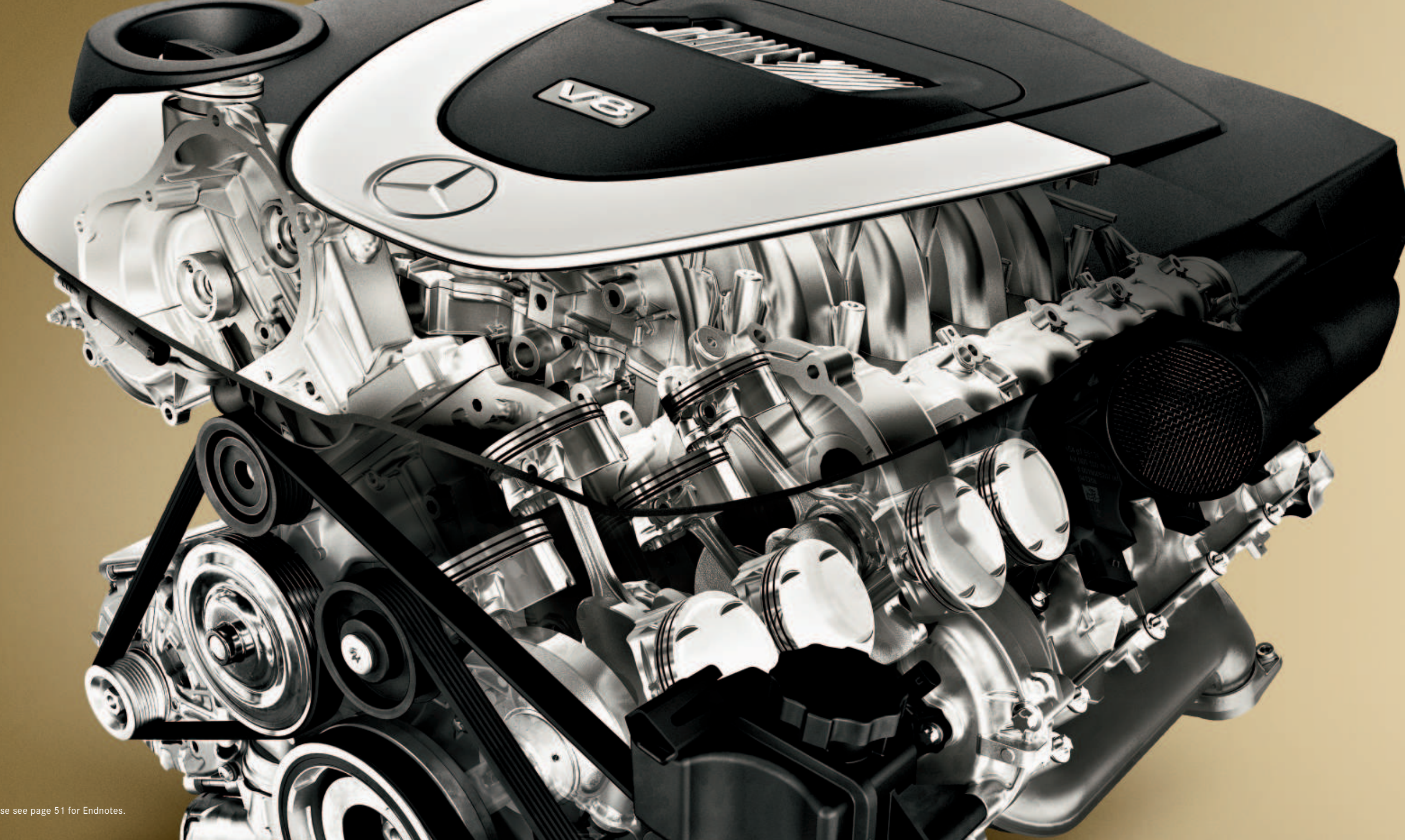
E 350   E 320 BLUETEC   E 550   E 63 AMG

## Poise and performance. Finely calibrated.

We've been doing it for some time. In fact, when you consider that Mercedes-Benz invented the automobile over a century ago, it's been quite some time. Time building vehicles engineered to ask drivers to sacrifice nothing. Machines that possess a wealth of luxuries, even as their performance never lets you forget their racing pedigree. The E-Class epitomizes this delightful duality. These sedans and wagon harken to a time of handcraftsmanship and attention to detail, yet look ahead with technological innovations like safety systems that can anticipate a possible accident, as well as engines that are at once more powerful and more efficient. In short, an E-Class is everything an automobile should be, because it is everything a Mercedes-Benz is.



E 550 Sport Sedan shown above left in Iridium Silver metallic paint with optional AMG Sport and Premium 2 Packages. E 350 Wagon shown at right in optional Pewter metallic paint.



## Rare combinations of horsepower and brainpower.

When you love to drive, timing is everything – especially 0-to-60-mph timing. It's the inspiration to leap cleanly off the line and the midrange power to pass dawdling traffic at will. Every member of the E-Class family of V-6 and V-8 engines is Mercedes-Benz-engineered for real-world performance – high cruising range, low emissions and serious power. We've even created a new generation of stronger, cleaner, quieter diesels offering a highway range of up to 675 miles between fill-ups!

And as an E-Class owner, you'll have the confidence to take charge of a freeway on-ramp with the 268 horsepower and 6.5-second<sup>2</sup> 0-to-60 time of the E 350 Sedan. That and the superbly smooth response of a 7-speed automatic transmission that adapts its shift patterns to match your driving style – whether leisurely or lively. Or perhaps you'll delight in the E 550's 382-horsepower V-8 as it trips the 60 mph mark in just 5.4 seconds<sup>2</sup>. And if your V-8 tastes run to the extreme, you'll savor the breathtaking 4.3-second<sup>2</sup> 0-to-60 rush of the 507-horsepower E 63 AMG.

## ADS-II, BAS, 4-ETS. Translation: confidence.

In the beginning, middle and end, handling is about confidence. Confidence that starts with a fully independent multilink suspension tested on some of the world's unfriendliest roads to lock in a Mercedes-Benz blend of cornering composure and ride comfort. And an Airmatic Semi-Active Suspension allows the E 550 and E 63 AMG to ride on air, and lets you pick the style of ride you want – Sport or Comfort.

But not everything about handling rests in the suspension. That's why the E-Class roster of innovations includes a brake-drying feature for wet weather and Brake Assist (BAS), which can immediately supply full braking power if it senses an emergency stopping situation.<sup>3</sup> And for added confidence in all conditions, available 4MATIC™ all-wheel drive with our Electronic Traction System (4-ETS) distributes power to all four wheels to improve grip, balance and poise on virtually any surface.<sup>4</sup>





## Maintain a firm grip on the pleasure of driving.



When the conversation turns to roadholding, there's one handling innovation that always outshines the others: all-wheel drive. Why? It's the assurance of having four wheels working full-time to help keep you steady on all kinds of roads in all kinds of weather. The E-Class 4MATIC™ all-wheel-drive system – standard on the E 350 Wagon, optional on the E 350 and E 550 Sedans – boosts that assurance even further with our 4-wheel Electronic Traction System (4-ETS). 4-ETS constantly monitors for signs of wheel slip, applying individual brakes and supplying power to the wheels with grip – even if it's just one wheel – to help maintain balance on the road<sup>4</sup> and enjoyment in the ride.



Take particular comfort in over  
a century of craftsmanship.

Not everything about the E-Class feels brand-new. In fact, some of it feels genuinely Old World. Like the exquisite feel and hand-fitted quality of available leather. Or the inviting finish of Burl Walnut or Black Birdseye Maple wood trim, hand-polished and selected with an artisan's attention.

Of course, the ultra-modern world gets its full due in the E-Class as well, with such pleasures as a standard 12-speaker harman/kardon® LOGIC7® digital surround-sound system with a 6-disc CD changer. Optional SIRIUS Satellite Radio – standard on the E 63 AMG – provides the ultimate in digital entertainment. And an available Hands-Free Communication System with accessory Bluetooth® interface allows you to integrate your mobile telephone and E-Class audio system seamlessly, all without ever having to take your hands off the steering wheel.





## 10-way moving seats. An interior that's moving, period.

A comfortable driver is a better driver, a more alert driver. That's why, in addition to room to stretch out in each seat of the E-Class, the driver and front-seat passenger get 10-way power-adjustable seats with the lower-back relief of adjustable lumbar support and three memory settings. Supple leather upholstery, selected, gauged and fitted by hand, is available on every model. And to help capture your ideal driving position, every E-Class includes a 4-way tilt/telescoping power-adjustable steering column.

In order to appreciate the best of every season, a power tilt/sliding tinted-glass sunroof comes standard on every E-Class. An even bigger piece of sky is available on E-Class Sedans when you opt for the dual-panel Panorama Roof, which brings majestic outside views to both front- and rear-seat passengers. From inside the E-Class cabin, standard dual- or 4-zone automatic climate control gives personal priority to individual preferences in temperature and airflow. And for the ultimate in comfort, 3-level heated front seats (standard on the E 63 AMG) are another option, along with Active Ventilated Seats on V-8 models.



## Who knew your fingertips were quite so powerful?

It wasn't all that long ago that the Mercedes-Benz SmartKey became the hardest-working car key in the business—remotely opening and closing your car's windows and sunroof, and, of course, locking and unlocking your doors and trunk at the touch of a button. The SmartKey still does all of those things, naturally, but in conjunction with optional Keyless Go, it can also lock/unlock your E-Class and allow you to start and stop the engine without ever having to remove your key from your pocket or purse.

This commitment to convenience is integrated throughout the E-Class, literally, via the car's innovative COMAND system and multifunction steering wheel, which coordinate the audio and optional DVD-based Navigation and Hands-Free Communication systems, as well as a host of vehicle settings, to work together. With the E-Class Wagon, you'll appreciate the many ways it makes your life easier, including its standard power tailgate with one-touch remote opening and one-touch closing via a button on the tailgate—just the ticket when your arms are full of shopping bags. E-Class Sedan owners can enjoy this same pushbutton practicality with the optional Electronic Trunk Closer.



## Technology that anticipates an accident from a company that knows what's coming next.

Calling a safety system "PRE-SAFE" is a bold statement. But the bold history of Mercedes-Benz safety engineering reads like a history of automotive safety itself: Innovative safeguards like crumple zones, antilock brakes, traction and stability control, air bags working in conjunction with seat-belt tensioners, and Brake Assist were all pioneered in automobiles by Mercedes-Benz. In your E-Class, these systems all work together for you in an advanced network of accident prevention and protection.

PRE-SAFE<sup>®</sup>, another Mercedes-Benz first, builds on this network by using Electronic Stability Program and Brake Assist sensors monitoring certain types of vehicle movements to "predict" a possible accident. The instant an incident is anticipated, PRE-SAFE takes action to help minimize the aftereffects – tightening front seat belts and repositioning the front passenger seat for improved air-bag effectiveness, and even closing the sunroof<sup>3</sup> and side windows to protect passengers from debris in situations suggesting a possible rollover.

Now that's revolutionary. And bold. And very Mercedes-Benz.





— The 2008 E-Class —

## E 350 Sedan

Rarely have a sport sedan and a luxury sedan had so much in common. Mated to the silken shifts of a 7-speed automatic transmission, the E 350 Sedan's 268-horsepower V-6 responds on cue with a rush of acceleration. Inside the roomy E-Class cabin, the 10-way power-adjustable front seats were designed to keep you soothed and sharp, while the two places your hands find most often – the steering wheel and shift knob – are trimmed in soft leather. Hand-polished Burl Walnut wood trim further accents E 350 Luxury Sedan style, just as a 12-speaker harman/kardon® LOGIC7® digital surround-sound and our accident-anticipating PRE-SAFE® systems showcase advanced E 350 technology. For those who like a little extra performance, the E 350 Sport Sedan includes 18" alloy wheels, a lowered, sport-tuned suspension and dual chrome tailpipes, plus Black Birdseye Maple wood trim and white-color gauges. And to heighten driving confidence, 4MATIC™ all-wheel drive is available on every E 350 Sedan.



## E 350 Wagon

---

Consider a 7-passenger wagon that blurs the boundaries between work and play. The E 350 Wagon offers the best of both worlds: Mercedes-Benz levels of first-class features, creature comforts and style along with three rows of seating and seemingly endless cargo/passenger configurations. This wagon is also quick and economical, with a 3.5-liter V-6 that produces a generous 268 horsepower without scrimping on fuel economy.

Throw in the all-weather assurance of standard 4MATIC™ all-wheel drive, the absolute convenience of a power lift/close tailgate, a load-leveling Airmatic rear suspension and up to 68.9 cu ft of cargo room,<sup>7</sup> and you've got a wagon that's everything a wagon should be.

An aerial, high-angle photograph of a silver Mercedes-Benz E 550 Sedan. The car is positioned on a bridge with prominent green metal railings that create a strong geometric pattern across the frame. The car is facing towards the bottom left of the image. The bridge deck is a light tan color, and the water below is a deep blue. The lighting is dramatic, with strong highlights and shadows.

## E 550 Sedan

Sink into the sensations of leather upholstery just as your E 550 Sedan's Airmatic Semi-Active Suspension sinks into the pavement to deliver a serene ride or, at your desire, adopt a much sportier handling attitude. Please all onboard with 4-zone automatic climate control and a harman/kardon® LOGIC7® digital surround-sound system. Now breathe deep, smile and use the accelerator pedal to register the authority of a 382-horsepower, 5.5-liter V-8: from 0 to 60 mph in 5.4 seconds<sup>2</sup> without breaking a sweat.

E 550 Sport Sedan shown at right in Iridium Silver metallic paint with optional Premium 1 Package.  
Please see page 51 for Endnotes.

NEXT FUEL STOP  
675 MILES



E 320 BLUETEC: Make a clean break with your preconceptions about diesel.

Imagine a clean, quiet drive from the Atlantic to the Pacific that only requires you to stop four times for fuel.

That's roughly one fill-up per time zone. No other luxury car in America can touch the E 320 BLUETEC Sedan, which gets up to 675 miles on a single tank of fuel<sup>1</sup> – not even a hybrid. And it's the cleanest diesel in the world. In fact, the E 320 BLUETEC was chosen "2007 World Green Car"<sup>2</sup> over entries with "hybrid" and "hydrogen" technologies. Mercedes-Benz BLUETEC technology is writing the high-performance future of diesel. The E 320 BLUETEC's 3.0-liter, turbocharged V-6 puts out V-8 force – 400 lb-ft of torque, pure acceleration – almost as soon as you punch the pedal. Best of all, the E 320 BLUETEC's 6.6-second<sup>2</sup> 0-to-60-mph time is achieved with significantly reduced pollutants, high fuel economy and low noise levels. After all, the E 320 BLUETEC<sup>9</sup> is more than a revolution. It's a Mercedes-Benz.





**6.3** AMG

## E 63 AMG: Engineering the extreme.

The E 63 AMG soars on the fierce intensity of one of the most powerful naturally aspirated V-8 engines the world has ever seen. A masterpiece of AMG engineering, the E 63 AMG's 6.3-liter V-8 – hand-built and signed by the master technician who built it – erupts with 507 horsepower and an astonishing 465 lb-ft of torque. That's enough force to put most production V-12s to shame. Synched with the snap-quick gear changes of an AMG SPEEDSHIFT™-enhanced 7-speed automatic transmission, the E 63 AMG whips from 0 to 60 mph in just a few wide-eyed blinks: 4.3 seconds.<sup>2</sup>

A superior powerplant calls for equally superior handling and braking. AMG answers that call with a beefier, recalibrated Airmatic Semi-Active Suspension and immense, racing-derived compound brake rotors – 14.2" diameter in front with 6-piston AMG calipers, 13.0" at the rear. The result is a 4-door sedan that seats five comfortably, rockets off the line, corners with razor-sharp reflexes and possesses the stopping power of a racecar. And for the total driving enthusiast, the AMG Performance Package endows this fearsome sedan with enhancements that will redline your adrenaline.



# E 63 AMG

Drivetrain	Engine	AMG-built DOHC 32-valve V-8
	Power	507 hp @ 6,800 rpm
	Torque	465 lb-ft @ 5,200 rpm
	Displacement	6,208-cc
	Compression	11.3:1
	Transmission	7-speed automatic with AMG SPEEDSHIFT. <sup>™</sup>
	Acceleration	0-60 mph in 4.3 seconds. <sup>2</sup>
Dimensions	Wheelbase	112.4"
	Overall length	191.0"
	Overall height	58.4"
	Overall width	71.7"



## The E 63 AMG

The high-amp spirit of the E 63 AMG's styling is a perfect mirror of the car's revolutionary performance engineering. Outside, an aggressive AMG front air dam with black-mesh intakes greets your stare. Striking 18" 5-spoke alloy wheels wrapped in high-performance tires<sup>4</sup> add to the strength of the car's stance. Bold AMG lower bodywork continues along the rocker panels and at the rear, where two sets of dual chrome exhaust tips punctuate the intense personality of the E 63 AMG.

Inside, AMG Premium Leather upholstery and Black Birdseye Maple wood trim dress the E 63 AMG. Specially contoured sport front seats with Alcantara inserts provide support as the leather- and Alcantara-trimmed 4-spoke AMG sport steering wheel with specially weighted aluminum paddle shifters inspires control and confidence. Suede-like Alcantara also covers the pillars, sun visors and headliner, while leather trims the AMG shift knob. And in the E 63 AMG instrument cluster, AMG gauges and the AMG RACETIMER<sup>10</sup> in the multifunction display help keep your performance focus sharp.



E 63 AMG shown at right with Black AMG Premium Leather interior. Please see page 51 for Endnotes.



**3.5-liter V-6 engine**

The dual overhead cam (DOHC) V-6 in E 350 models is efficient and exhilarating. It commands 268 horsepower and 258 lb-ft of peak torque to keep your adrenaline flowing. Continuously variable timing on both the intake and exhaust valves coupled with a dual-stage intake manifold helps the DOHC V-6 provide 100% of its peak torque from 2,400–5,000 rpm, ensuring immediate response with every throttle input.

**BLUETEC clean diesel technology**

The breakthrough powerplant in the E 320 BLUETEC reduces soot and harmful emissions—without sacrificing power. An oxidation catalytic converter and diesel particulate filter efficiently lower hydrocarbon and particulate emissions, and Selective Catalytic Reduction and DeNOx catalytic converters reduce nitrogen oxides.<sup>11</sup> The result is simply the cleanest production diesel engine available.<sup>2</sup>

**7-speed automatic transmission**

The Mercedes-Benz E-Class is the only car in its class to have a 7-speed automatic transmission as standard equipment. A wide range of closely spaced gears delivers the ideal gear ratio for virtually every driving condition, which means smoother cruising and immediate response for acceleration and passing, and even improved fuel efficiency on the highway. Clearly, our passion for advanced engineering isn't limited to our engines. (Not available on vehicles with 4MATIC™ all-wheel drive.)

**7-speed automatic transmission with AMG SPEEDSHIFT™**

Harness the phenomenal force of the E 63 AMG to the highest degree possible. Change gears rapidly using the AMG aluminum shift paddles on the steering wheel. Then choose any of three settings (S for Sport, C for Comfort and M for Manual) custom-tailored to the performance attributes of the AMG V-8 as well as whatever driving mood you're in.



**AMG 6.3-liter V-8 engine**

The most powerful naturally aspirated V-8 in our lineup has been mated to a 7-speed automatic transmission with AMG SPEEDSHIFT for ready access to that enormous strength. Feel a rush of euphoria as the engine develops a massive 507 horsepower and 465 lb-ft of torque to propel the E 63 AMG from 0 to 60 in just 4.3 seconds.<sup>2</sup> And like all AMG engines, each is hand-built and signed by a single master technician.

**5.5-liter V-8 engine**

One of our most advanced engines generates 382 horsepower and 391 lb-ft of torque, with an amazing 75% of peak torque available at just 1,000 rpm. To help reduce engine weight and increase durability, the engine block is made of cast aluminum with a solid bedplate, an ideal construction for performance and durability. Indeed, the engine's smooth, immediate power delivery whisks the E 550 from 0 to 60 mph in 5.4 seconds.<sup>2</sup>





## Agility



### 4MATIC™ all-wheel drive with 4-wheel Electronic Traction System (4-ETS) ● ○ –

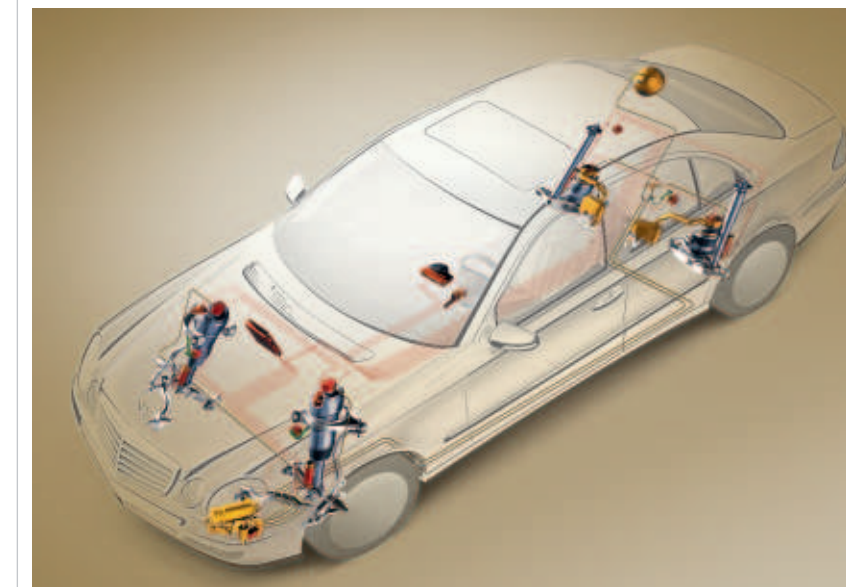
Whatever the season or road condition, 4MATIC all-wheel drive can provide an extra measure of confidence and control when you need it—or can enjoy it—most. Standard equipment on the E 350 Wagon and available on most E-Class models, 4MATIC raises traction in your E-Class to the power of four, putting every wheel to work for you and optimizing the available grip. Whether you're heading to the mountains for a weekend of skiing or merely enjoying the delights of your favorite two-lane highway, 4MATIC can make a difference that you'll appreciate any time—and every time—you get behind the wheel. The 4MATIC system is fully automatic: it's always engaged and sending torque to every wheel. And 4MATIC is integrated with our standard Electronic Stability Program, which maximizes the effectiveness of 4MATIC in corners and in wet or slippery conditions. To help ensure that the driving power translates into control, 4MATIC incorporates our 4-wheel Electronic Traction System. 4-ETS monitors each wheel for the first sign of wheel slip to maintain the balance of power and, if necessary, reduce excess torque. By continually ensuring that power goes to the wheels with grip, 4MATIC can help get the vehicle moving—even if only one wheel has traction.<sup>4</sup> *Standard E 350 Wagon. Optional E 350 and E 550 Sedans. Not available E 320 BLUETEC and E 63 AMG.*

### Brakes ●

The E-Class's internally ventilated disc brakes<sup>12</sup> deliver powerful, nearly fade-free stopping control. They also come equipped with Predictive Brake Priming. This dynamic feature sets the brake pads closer to the discs when the driver quickly releases the accelerator, for faster brake response. One of many other features is Brake Drying, which helps increase stopping performance in wet conditions by intermittently (and imperceptibly) pressing the brake pads against the rotors when the windshield wipers are in use in order to remove water on the rotors.<sup>3</sup> *Standard all models.*

### Multilink suspension ●

The E-Class uses a 4-wheel multilink suspension<sup>13</sup> for exceptional poise and control, even under severe braking. The 5-arm rear multilink design—a Mercedes-Benz innovation—controls rear-wheel movement with outstanding precision. For more dynamic handling, the front axle assembly, front suspension and steering gear are all preassembled along with the engine and transmission on an extraordinarily rigid steel subframe. The use of lightweight/high-strength aluminum suspension components helps reduce unsprung weight and improve handling. *Standard all models.*



### Airmatic Semi-Active Suspension ● –

For a balanced, comfortable ride, the Airmatic system employs electronically controlled air springs that adjust to changing driving conditions. The system also lowers the ride height at higher speeds for improved aerodynamics and fuel efficiency. To help compensate for additional cargo or passenger weight, Airmatic automatically levels the vehicle. *Standard E 550 Sport Sedan and E 63 AMG. Not available E 350 Sedan, E 350 Wagon and E 320 BLUETEC.*

### Adaptive Damping System (ADS-II) ● –

Part of the Airmatic Semi-Active Suspension, found on V-8 models, ADS-II lets you tailor your driving experience with three selectable driving modes—two for Sport and one for Comfort—at the touch of a button. ADS-II continually optimizes ride and handling by individually adjusting each wheel's shock-absorption rate every time the wheel changes its direction of up-down travel. *Standard E 550 Sport Sedan and E 63 AMG. Not available E 350 Sedan, E 350 Wagon and E 320 BLUETEC.*

● Standard. ○ Optional or included with a package. – Not available.  
Please see page 51 for Endnotes.

#### Mercedes-Benz safety philosophy

At Mercedes-Benz, safety goes well beyond engineering vehicles that help protect you in an accident. Our safety philosophy takes a proactive approach to many aspects of driving safety: active safety systems, such as the Electronic Stability Program and Brake Assist, help you avoid a potentially dangerous situation; PRE-SAFE enables the vehicle to anticipate and make certain adjustments to prepare for certain potential collisions; passive safety features include air bags and seat-belt tensioners; and post-collision features like automatic engine cutoff are designed to reduce the risk to occupants in the immediate aftermath of a crash, help prevent worsening of the situation and facilitate rapid assistance by rescue workers. No other automaker has a more complete view of safety than the one that invented crumple zones and other safety advancements.



#### PRE-SAFE® ●

Mercedes-Benz originated this landmark system, and it's still the only manufacturer to offer it standard. PRE-SAFE acts decisively to prepare for a possible accident. PRE-SAFE uses sensors from two of the active safety systems already inside the vehicle: Brake Assist and our Electronic Stability Program. If system sensors detect certain vehicle movements that indicate an accident is possible, PRE-SAFE takes action to help protect the vehicle's occupants. Electric tensioners tighten the seat belts of the front-seat occupants. PRE-SAFE adjusts the occupied front passenger's seat to a more favorable position for air-bag and seat-belt effectiveness. In the event of severe skidding, which indicates that a rollover is likely, PRE-SAFE will close the sunroof<sup>5</sup> and side windows. If no accident occurs, the tensioners loosen and you simply readjust your seat, open the sunroof and continue on your way. *Standard all models.*

#### Brake Assist (BAS) ●

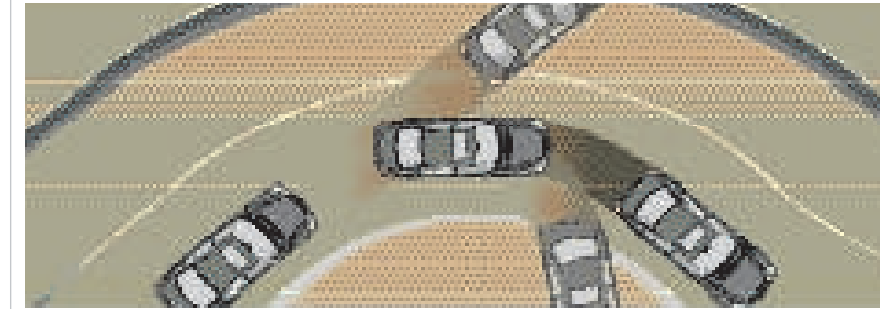
Research has shown that drivers rarely apply the brakes hard enough, soon enough during an emergency situation. BAS monitors pedal application speed to sense emergency braking and, in such cases, can deliver maximum stopping power.<sup>3</sup> *Standard all models.*

#### Integrated Restraint System ●

Our 8-air bag system delivers 10-way protection, including dual-stage front air bags, front- and 2nd-row side-impact air bags and full-length Window Curtain Air Bags along the sides of the vehicle. (E 350 Wagon Window Curtain Air Bags extend only to the 2nd row.) With properly worn seat belts, Window Curtain Air Bags help protect outboard occupants from head injury and broken glass in certain side impacts or rollovers that exceed the deployment threshold.<sup>14</sup> *Standard all models.*

#### Active Front Head Restraints ●

In the case of a rear impact exceeding a preset threshold, the Active Front Head Restraints move forward and slightly upward, reducing the distance between the head restraint and the front-seat occupants' heads. This action helps limit the rearward travel of their heads, thus reducing the possibility or severity of whiplash-type neck injuries. *Standard all models.*



#### Electronic Stability Program (ESP®) ●

This advance continually monitors your vehicle's motion to help keep you going in your intended direction. If it detects wheelspin, severe understeer (plowing) or oversteer (fishtailing), ESP can brake individual wheels and reduce engine power to correct those problems and help bring the vehicle under control.<sup>4</sup> Mercedes-Benz pioneered this safety landmark in 1995 and has continued to refine its exacting performance ever since. *Standard all models.*

#### Body structure ●

A range of precision safety elements work together to protect you and your passengers in the event of a collision. While High-Strength/Low-Alloy steel in important areas of the vehicle forms an exceptionally rigid barrier, advanced front and rear crumple zones deform progressively to help absorb the energy of an impact. A front bulkhead also helps channel some of the forces of a frontal impact under, over and around the cabin. *Standard all models.*

#### Seat belts ●

Equipped with Emergency Tensioning Devices (ETDs) and belt force limiters,<sup>15</sup> seat belts are arguably our most important passive safety feature. If a collision exceeds a preset threshold, the ETDs instantly remove slack from the seat belts. Belt force limiters allow a slight amount of give in the seat belts and reduce the peak seat-belt forces on the occupant. *Standard all models.*

● Standard. ○ Optional or included with a package. — Not available.  
Please see page 51 for Endnotes.

## Protection





## Amenities

### COMAND system ●

Featuring a 6.5" color-LCD screen, the Cockpit Management and Data (COMAND) system lets you control the audio and optional Navigation and Hands-Free Communication systems. You can change stations, adjust the volume and choose CD tracks. Make or answer calls via dashboard controls or the multifunction steering wheel. When you're on the phone, the system automatically mutes the audio system or pauses the CD.

*Standard all models.*

### SIRIUS Satellite Radio ● ○

Enjoy a complimentary 6-month subscription to SIRIUS with over 130 channels, including 61 channels of sports, news, talk, entertainment, traffic, weather and data. SIRIUS is also home to 100% commercial-free music channels, featuring 69 music channels nationwide. Live play-by-play broadcasts of the biggest sports—NFL®, NASCAR®, NHL®, NBA® and games from over 150 college sports teams—round out what's sure to be one of your favorite cabin appointments.<sup>16</sup>

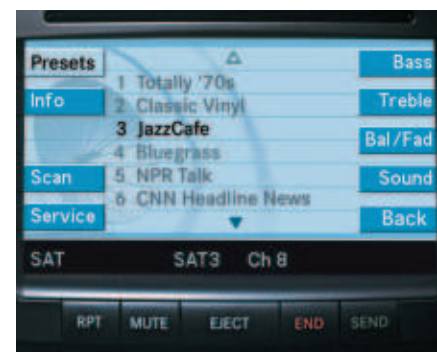
*Standard E 63 AMG. Optional all other models.*

### Tele Aid<sup>17</sup> ●

Three buttons conveniently located in the cockpit put a multitude of services at system subscribers' fingertips:

- SOS button: Push in an emergency for a Tele Aid Response Specialist who can notify police or other emergency personnel of your vehicle's location. The system also automatically activates when an air bag or seat-belt Emergency Tensioning Device deploys.
- Wrench button: For Mercedes-Benz Roadside Assistance. Service personnel will help you identify the trouble and dispatch roadside assistance as needed.<sup>18</sup>
- *i*-button: Contact the Customer Assistance Center or your Mercedes-Benz dealer, receive Route Assistance and access available services such as our Concierge Service and Tele Aid's Traffic Information.<sup>19,20</sup>

*Standard all models.*



### DVD-based Navigation System ○

This single-disc system uses GPS satellites to map the route to your location and help find points of interest along the way, including restaurants, hotels, ATMs and Mercedes-Benz dealerships. Maps and other visual aides appear on-screen; voice instructions play through the audio system.<sup>21</sup> Be sure to ask your dealer about our NavUpdate discs to keep your maps and Points Of Interest current.<sup>22</sup>

*Optional all models.*

### iPod® Integration Kit ○

Taking your music wherever you drive has never been easier. With the seamless integration of your iPod into the audio system of your E-Class, the steering wheel lets you view the track information display and control iPod buttons like Volume, Select and Change Menu. Using a compatible interface with any dock-connector-equipped iPod device, you can even charge your iPod while it's playing.<sup>23</sup>

*Optional all models.*

### harman/kardon® LOGIC7® digital surround-sound system ●

This digital surround-sound system fills the cabin with 420 watts of beautifully balanced sound. Twelve optimally placed speakers deliver an enthralling surround-sound experience from FM radio, MP3s, SIRIUS Satellite Radio and the standard 6-disc CD changer. Digital Dynamic Volume Control helps maintain sound balance in varying driving conditions.

*Standard all models.*

### Hands-Free Communication System ○ Bluetooth

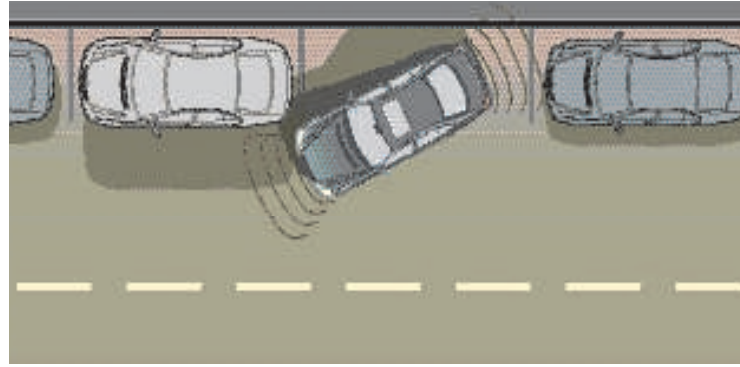
Make calls, receive calls and even access select phone books<sup>24</sup> through the COMAND system in one of two easy ways. Using an approved compatible phone,<sup>25</sup> you can connect to the Hands-Free Communication System<sup>26</sup> via a range of accessory Multi-Handset Interface (MHI) cradles or an accessory Bluetooth® interface module. With the cradle, your phone connects to the vehicle's external antenna, while the Bluetooth interface services your needs wirelessly. When your Bluetooth-compatible phone is synched up to the system, just leave your phone in your pocket and enjoy hands-free conversations over the sound system.<sup>27</sup> Bluetooth-compatible phone, Bluetooth interface module and MHI cradles sold separately.<sup>28</sup> Please see your dealer for details.

*Optional all models.*

● Standard. ○ Optional or included with a package. — Not available.  
Please see page 51 for Endnotes.



Please see page 51 for Endnotes.



#### Parktronic system ○ –

When parking, ultrasonic sensors in the front and rear bumpers detect nearby objects within the system's field of view. Audible signals and illuminated displays, visible in both the instrument cluster and rearview mirror, help you maneuver with confidence. This system helps you avoid obstacles that might be outside your field of vision when parking in tight spaces.

*Optional all E-Class Sedans. Not available E 350 Wagon.*



#### Bi-Xenon headlamps with Active Curve Illumination ○

See better around corners at night using these advances that turn along with your steering wheel. They provide a clearer view into corners by increasing usable illumination by up to 90% over conventional fixed headlamps. Bi-Xenon headlamps deliver superior visibility over halogen headlamps because their brighter, whiter light is much closer to natural sunlight.

*Optional all models.*



#### Panorama Roof ○ –

A large dual-panel glass Panorama Roof provides both front- and rear-seat passengers with a view of the sky. The front panel can either tilt open or slide over the rear panel to open completely. And if you feel like limiting the amount of sunlight coming in, independently operated interior power sunshades cover both glass roof panels.

*Optional all E-Class Sedans. Not available E 350 Wagon.*

Please see page 51 for Endnotes.



#### Distronic Adaptive Cruise Control ○ –

Available on the E 63 AMG, this radar-based breakthrough monitors the vehicle ahead and adjusts your speed to help maintain a selected following distance.<sup>29</sup> If the vehicle ahead suddenly slows or abruptly stops and calculated closing speed indicates that you haven't taken appropriate braking action, the system illuminates a red light in the instrument cluster and sounds an alarm signal.<sup>30</sup> Ideal for long journeys, as there is less need to adjust the cruise control setting.

*Optional E 63 AMG. Not available all other models.*



#### Dual-zone climate control ● –

Both the driver and front-seat passenger can select his or her own level of heating or cooling, thanks to individual controls for each on the dashboard. An advanced electrostatic dust and pollen filter helps clean incoming air and a humidity/dewpoint sensor reduces window fogging in damp weather. Tunnel mode offers one-touch closing of all windows and cabin air intake by pressing and holding the air-recirculation button.

*Standard E 350 Sedan, E 350 Wagon and E 320 BLUETEC. Not available E 550 Sport Sedan and E 63 AMG.*

#### 4-zone climate control ● –

Here, four individual temperature and airflow controls treat the driver, front and rear passengers to all the features of the dual-zone climate control system plus rear-cabin air vents in the center console and adjacent to the rear doors. When set to the Auto position, the system monitors sunlight intensity and seat occupancy to determine which side of the car requires greater cooling, and adjusts the temperature and airflow accordingly.

*Standard E 550 Sport Sedan and E 63 AMG. Not available E 350 Sedan, E 350 Wagon and E 320 BLUETEC.*

#### Keyless Go ○

A leap in ease and efficiency, this option lets you open or lock any door or the trunk while leaving your vehicle's SmartKey in your pocket. To start the vehicle, simply step on the brake pedal and push the Start button, located on the gearshift lever. You can also start the vehicle the conventional way by inserting the SmartKey in the ignition.

*Optional all models.*

#### Power rear sunshade ○ –

The optional power rear sunshade is a very helpful feature of all E-Class Sedans. A fine-mesh curtain, it screens the sun's rays in the rear window without blocking the driver's view. The E 350 Wagon includes manually operated rear side window shades instead of a rear sunshade.

*Optional all E-Class Sedans. Not available E 350 Wagon.*

#### Heated seats ● ○

For added convenience and year-round comfort, heated front seats are available. Three levels of heating can be selected via buttons on the center console.

*Standard E 63 AMG. Optional E 350 Sedan, E 350 Wagon and E 320 BLUETEC.*

#### Heated and Active Ventilated Seats ○ –

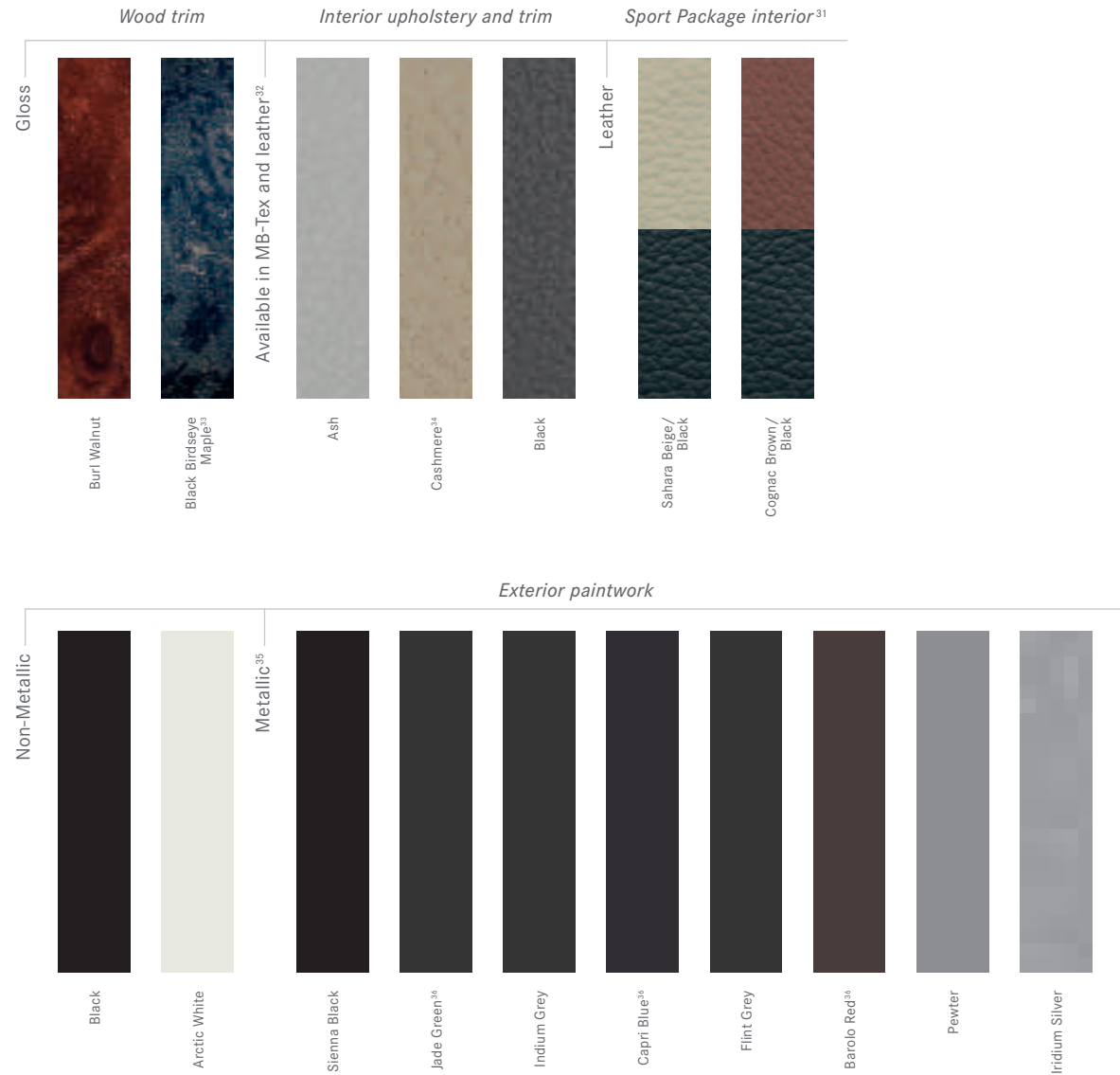
In addition to staying toasty inside when it's cold outside with heated seats, enjoy the extra benefits of Active Ventilated Seats. These are designed to keep you cool during warmer months by gently circulating air through perforations in the seat and backrest, which also helps eliminate perspiration buildup.

Using the ventilation and heating features simultaneously can even help keep you warm and dry on cold and rainy days.

*Optional E 550 Sport Sedan and E 63 AMG. Not available E 350 Sedan, E 350 Wagon and E 320 BLUETEC.*



● Standard. ○ Optional or included with a package. – Not available. Please see page 51 for Endnotes.



Please see page 51 for Endnotes.

## Color and Trim

**Design an E-Class all your own**  
 Customize the look of your E-Class to reflect your personal style. First choose from a variety of metallic and non-metallic exterior paints. Then add to that palette your favorite available upholstery color and material choices. Burl Walnut high-gloss wood comes as standard trim on Luxury models, while Black Birdseye Maple wood trim comes standard on Sport models (the Sport Package is not available on the E 350 Wagon, E 320 BLUETEC or E 63 AMG). The E 350 Sedan, E 350 Wagon and E 320 BLUETEC also come with MB-Tex upholstery standard and leather as an optional upgrade combined with high-gloss wood trim. With this many choices, there's bound to be an ideal combination for you.

**Nano-particle paint**  
 To keep your vehicle's exterior looking its best for a long time, Mercedes-Benz uses nanotechnology – specifically, microscopic ceramic nano-particles. Each ceramic nano-particle is tens of thousands of times thinner than a human hair, but when joined together they are incredibly durable. The resulting finish offers considerably greater and longer-lasting resistance to fine scratches – such as those caused by car washes and environmental factors – than conventional paint finishes, for an enduring deep gloss.

**designo Espresso Edition<sup>37</sup>**  
 The warm sophistication of *designo* Mocha Black metallic paint sets the stage for an engaging performance within. You'll find enchantment in soft *designo* Sand Nappa leather hand-fitted to the cabin's seats<sup>38</sup> and door-trim inserts. Lustrous Brown Poplar wood trim and a matching wood/leather steering wheel<sup>39</sup> underscore the hip elegance. The front-seat backrests flaunt the signature *designo* metal plate. From the Alcantara headliner to Black-leather-trimmed *designo* floor mats, this shot of espresso delivers a rush of luxury that's practically addictive.



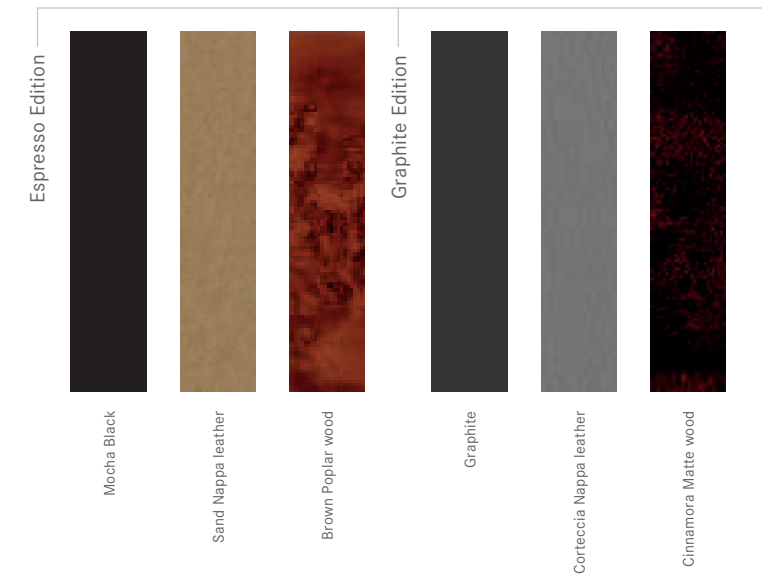
**designo Graphite Edition<sup>37</sup>**  
 Dressed in *designo* Graphite metallic paint, the E-Class is the definition of quiet sophistication. A world of hushed elegance is created with a sleek Alcantara headliner, sumptuous *designo* Corteccia Nappa leather<sup>38</sup> and rich brown Cinnamora Matte wood trim. The unmistakable *designo* metal plate adorns the front-seat backrests. Sensual delights include a wood/leather steering wheel<sup>39</sup> and shift knob and the softness of plush Black *designo* floor mats exquisitely edged in leather.



Please see page 51 for Endnotes.



Take high style to new heights with our exclusive *designo* appointments.



## Accessories

Refine the sporty elegance of the E-Class to match your personal preferences. Mercedes-Benz dealers offer an inviting array of E-Class accessories, from distinctive alloy wheels to arresting chrome accents. Each of the following components is also designed, engineered and tested to exacting Mercedes-Benz standards for a high level of quality. So ask your dealer for the E-Class Accessories Brochure to see our full line of appearance, utility and car care accessories. The E-Class will always be the perfect combination of sport and luxury. Now it can also be a reflection of your individual style.



### Chrome accents

Enhance the distinctive look of your E-Class with a set of bold chrome headlamp rings. Our exterior chrome mirror housings, two per set, complement the range of coordinating exterior refinements. Help protect the finish from scratches with more style yet, courtesy of a set of four chrome door-handle inserts.

### Multi-Handset Interface (MHI) cradle and Bluetooth® interface

Used with your vehicle's pre-wired Hands-Free Communication System, the MHI cradle lets you enjoy the benefits of hands-free calling and hands-free audio. The Bluetooth interface lets you make and receive calls, and access select phone books,<sup>24</sup> without taking your system-compatible phone out of your pocket.<sup>27</sup>

### Illuminated door sills

Light up your E-Class with radiant style every time you open the door, courtesy of luminous blue "Mercedes-Benz" stainless-steel door sills, which come in sets of two or four.

Please see page 51 for Endnotes.



### Accessory aluminum-alloy wheels

Engineered to the highest standards, each of our accessory wheels puts a unique spin on your E-Class, from 18" 5-spoke aluminum-alloy wheels<sup>6</sup> to 18" multispoke wheels in a two-tone finish with a high-gloss sheen.<sup>6</sup>

### Child safety seats

For infants, toddlers and small children alike, Mercedes-Benz offers a full line of child safety seats that provide both protection and comfort. While the BabySafe Plus Infant Child Seat (pictured) accommodates children up to 29 lbs or 31 inches long (approx. 0–15 months), the Duo Plus Toddler Child Safety Seat holds those between 20–40 lbs (approx. 1–4 years) and our KID Booster Child Safety Seat supports children 40–79 lbs or 57 inches tall (approx. 3½–12 years). All seats feature padded support, adjustable designs and a removable, washable fabric cover to ensure a pleasurable drive for every member of the family.



### Roof rack basic system

Transport a large assortment of items securely while maintaining the elegance of your E-Class. This carrier can be enhanced with available components to accommodate bicycles, ski and snowboard racks, and more. Optional cargo containers— aerodynamic and lightweight, yet exceptionally durable—let you add significant storage space for sports equipment and luggage.<sup>40</sup>

## Service & Support

### Tele Aid<sup>17</sup>

Three buttons put a multitude of services at system subscribers' fingertips: emergency response (SOS button), roadside assistance (Wrench button) and even concierge services (*i*-button).<sup>19</sup>

### Tele Aid Security & Care service

Enhance your sense of security with Remote Door Unlock, Stolen Vehicle Recovery and much more. Keep your annual subscription up-to-date for the peace of mind that comes from knowing you and yours have an added measure of security and care. With an active Tele Aid subscription, you may be eligible for a discount from your insurance provider.

### Tele Aid Luxury & Convenience Package

Here, expand your privileges with access to a Personal Concierge that fulfills your requests for nearly "anything, anytime, anywhere" and an Online Concierge for accessing your Personal Concierge via your computer or PDA wherever Internet access is available, as well as Traffic Information<sup>20</sup> and Route Assistance.

### 24-hour Roadside Assistance

The first of its kind and still the only one that remains in effect for the life of the vehicle. Our Roadside Assistance technicians draw on years of experience and training to get you back on the road as quickly as possible.<sup>18</sup>

Please see page 51 for Endnotes.

### Mercedes-Benz Limited Warranties

Our New Vehicle Limited Warranty runs for 48 months or 50,000 miles, whichever comes first. And anytime during the new vehicle warranty coverage, you can also purchase a Mercedes-Benz Extended Limited Warranty that will provide additional protection when the New Vehicle Limited Warranty expires.<sup>41</sup>

### Mercedes-Benz Maintenance System

Enjoy fixed, predictable service intervals every 13,000 miles or one year (10,000 miles or one year for AMG models).<sup>42</sup> About a month before service is due, your vehicle even reminds you via a dashboard display that also explains which maintenance service is due.

### No-charge Service Welcome

Stop by your Mercedes-Benz Center's Service Department for a no-charge first visit between 1,000 and 3,000 miles, where your dealer will perform a diagnostic check and address your questions. Your dealer will also provide the first tire rotation at no additional charge anytime before 6,500 miles.<sup>43</sup>

### 24-hour Customer Service

Our Customer Assistance Center is your one-stop source for answers. Whether you need to know how to use your audio system, find the nearest Mercedes-Benz dealer, get pricing or learn about personal and automotive accessories, just call 1-800-FOR-MERCEDES or press the Tele Aid *i*-button in your vehicle.

### Sign and Drive service

Our legendary Roadside Assistance service includes bringing you some fuel if you've run out, replacing a flat tire with your spare or jump-starting your car if the battery dies. All at no charge, and all for as long as you're driving a Mercedes-Benz — even somebody else's.<sup>44</sup> Help is as close as your vehicle's Wrench button (for Tele Aid subscribers) or just a phone call away at 1-800-FOR-MERCEDES.

### Trip Interruption benefits

In the unlikely event that a breakdown covered by your MBUSA New Vehicle Limited Warranty occurs more than 100 miles from your home, leaves your Mercedes-Benz inoperable or unsafe to drive and requires overnight repairs at a Mercedes-Benz Center, you'll be reimbursed up to \$300 per day for any documented expenses—for up to three days—including meals, lodging and substitute transportation.

### Dealer Alternate Transportation Program

Whenever you bring your vehicle into an official Mercedes-Benz Center for servicing during the warranty period, ask about your dealer's Alternate Transportation Program—so you can maintain your busy schedule while your dealer maintains your vehicle.<sup>45</sup>

### Mercedes-Benz Financial

Mercedes-Benz Financial offers a wide and impressive array of flexible and convenient financing options. To determine whether purchasing or leasing is right for you and to estimate the monthly payment of your next Mercedes-Benz, visit MercedesBenzFinancial.com.

### European Delivery Program

With our factory delivery program, enjoy a honeymoon with your new Mercedes-Benz as you savor the delight of driving it in the land where it was built—while you enjoy a 7% savings on many models.<sup>46</sup> Also take advantage of the optional Rally Package, which takes you through the Black Forest and the Alps, then on to Munich, staying at luxurious, historic hotels all along the way.

To learn more about these and many other services—including dealer locations and financing options—visit us at MBUSA.com today.



## ENGINE

Engine size and type	3,498-cc DOHC 24-valve V-6	2,987-cc DOHC 24-valve V-6	5,461-cc DOHC 32-valve V-8	6,208-cc AMG-built DOHC 32-valve V-8
Construction	Aluminum-alloy cylinder block.	Aluminum-alloy cylinder block.	Aluminum-alloy cylinder block.	Aluminum-alloy cylinder block.
Net power	268 hp @ 6,000 rpm	210 hp @ 3,800 rpm	382 hp @ 6,000 rpm	507 hp @ 6,800 rpm
Net torque	258 lb-ft @ 2,400–5,000 rpm	400 lb-ft @ 1,600–2,400 rpm	391 lb-ft @ 2,800–4,800 rpm	465 lb-ft @ 5,200 rpm
Compression ratio	10.7:1	16.5:1	10.7:1	11.3:1
Fuel tank (capacity—reserve)	21.1 gal—2.4 gal	21.1 gal—2.4 gal	21.1 gal—2.4 gal	21.1 gal—2.4 gal

## DRIVETRAIN

Transmission	7-speed automatic. 5-speed automatic (4MATIC models and E350 Wagon). Electronically controlled driver-adaptive shifting.	7-speed automatic. Electronically controlled driver-adaptive shifting.	7-speed automatic. 5-speed automatic (4MATIC models). Electronically controlled driver-adaptive shifting.	7-speed automatic with AMG SPEEDSHIFT. <sup>™</sup> Electronically controlled driver-adaptive shifting.
Drive configuration	Sedan: Rear-wheel drive (4MATIC optional). Wagon: 4MATIC.	Rear-wheel drive.	Rear-wheel drive (4MATIC optional).	Rear-wheel drive.
Rear axle ratio	3.07:1 (3.27:1 with 4MATIC)	2.65:1	2.65:1 (3.07:1 with 4MATIC)	2.82:1

## TRACTION/STABILITY

Electronic Stability Program (ESP <sup>®</sup> )	Standard.	Standard.	Standard.	Standard.
4MATIC <sup>™</sup> all-wheel drive with 4-wheel Electronic Traction System (4-ETS)	Optional on Sedan. Standard on Wagon.	Not available.	Optional.	Not available.

## PERFORMANCE

Acceleration, 0–60 mph <sup>2</sup>	Sedan: 6.5 seconds. Wagon: 6.9 seconds.	6.6 seconds.	5.4 seconds.	4.3 seconds.
Fuel economy, EPA estimate highway estimate	Information not available at time of printing. See your dealer for details.	Information not available at time of printing. See your dealer for details.	Information not available at time of printing. See your dealer for details.	Information not available at time of printing. See your dealer for details.

Please see page 51 for Endnotes.

## CHASSIS

Suspension configuration	Front: Independent 4-link (rear-wheel-drive models) or double wishbone (4MATIC models). Stabilizer bar. Rear: Independent 5-arm multilink. Stabilizer bar.			
Steel spring system	E 350 Sedan and E 320 BLUETEC: Coil springs and gas shock absorbers. E 350 Wagon: Front coil springs over gas shock absorbers; rear Airmatic suspension with automatic level control.			
Airmatic Semi-Active Suspension with Adaptive Damping System (ADS-II)	Not available.	Not available.	Standard.	Standard AMG-calibrated with enlarged stabilizer bar.
Steering	Rack-and-pinion with vehicle-speed-sensitive power assist. Turning circle: 37.4 ft curb-to-curb.			

## WHEELS/TIRES

Wheels	17" 7-spoke, 8.0x17	16" 7-spoke, 8.0x16	—	18" AMG 5-spoke, 8.5x18/9.0x18 <sup>6</sup>
with Sport Package (N/A on E 350 Wagon)	18" 10-twin-spoke, 8.5x18/9.0x18 <sup>6</sup> (8.5x18 front/rear with 4MATIC <sup>®</sup> ).	Not available.	18" 10-twin-spoke, 8.5x18/9.0x18 <sup>6</sup> (8.5x18 front/rear with 4MATIC <sup>®</sup> ).	Not available.
Tires	245/45 R17, all-season performance <sup>5</sup>	225/55 R16, all-season performance <sup>5</sup>	—	245/40 ZR18 front—265/35 ZR18 rear, high-performance <sup>5</sup>
with Sport Package	245/40 R18 front—265/35 R18 rear, all-season performance <sup>5</sup> (245/40 R18, all-season performance with 4MATIC <sup>®</sup> ).	Not available.	245/40 R18 front—265/35 R18 rear, all-season performance <sup>5</sup> (245/40 R18, all-season performance with 4MATIC <sup>®</sup> ).	Not available.

## BRAKES

Brake system	Dual-circuit power-assist 4-wheel disc.	Dual-circuit power-assist 4-wheel disc.	Dual-circuit power-assist 4-wheel disc.	AMG-enhanced dual-circuit power-assist 4-wheel disc.
Brake discs—calipers, front	13.0" ventilated—single-piston floating. 13.0" ventilated—4-piston fixed (E 350 Sport Sedan).	12.3" ventilated—single-piston floating.	13.0" ventilated—4-piston fixed.	14.2" compound perforated and ventilated—AMG 6-piston fixed.
Brake discs—calipers, rear	11.8" ventilated—single-piston floating.	11.8" solid—single-piston floating.	11.8" ventilated—single-piston floating.	13.0" compound perforated and ventilated—AMG 4-piston fixed.
Antilock Braking System (ABS) and Brake Assist (BAS)	Standard.	Standard.	Standard.	Standard.

## EXTERIOR DIMENSIONS

Wheelbase	112.4 in	112.4 in
Overall length	191.0 in	192.3 in
Overall height	58.4 in	59.3 in
Overall width	71.7 in	71.7 in

Please see page 51 for Endnotes.

## INTERIOR DIMENSIONS

Front headroom	39.1 in	39.6 in
Front legroom	41.9 in	41.9 in
Rear headroom	37.8 in	39.3 in
Rear legroom	35.6 in	36.0 in
Cargo capacity <sup>40</sup>	15.9 cu ft	24.4 cu ft (3rd-row seat folded). 68.9 cu ft (2nd- and 3rd-row seats folded).

## SPECIFICATIONS AND EQUIPMENT

### EXTERIOR

○ <sup>47</sup>	-	-	○ <sup>47</sup>	●	AMG front air dam with mesh air intakes and rear apron.
○ <sup>47</sup>	-	-	●	●	Polished chrome exhaust tips.
●	●	●	●	●	Power tilt/sliding tinted-glass sunroof with one-touch express-open/close and memory.
●	●	●	●	●	Dual heated power mirrors linked to driver's seat memory. Auto-dimming left-side mirror.
●	●	●	●	●	Electrically heated rear window with auto-shutoff based on time, driving speed and outside temperature.
●	●	●	●	●	Heated windshield washer reservoir.
●	●	●	●	●	Rain-sensing variable intermittent wipers measure rainfall on windshield and adjust wiper speed and frequency accordingly.
-	●	-	-	-	Intermittent rear-window wiper with wide-spray washer. When the front wipers are on, shifting to Reverse activates the rear-window wiper.
●	●	●	●	●	Variable-focus halogen headlamps with projector low beams. Halogen front foglamps. Single red rear foglamp, integrated within left taillamp.
●	●	●	●	●	Selectable light-sensing headlamps.
●	●	●	●	●	Programmable daytime running lamps with auto override in darkness.

### INTERIOR

●	●	●	●	●	Multifunction steering wheel provides convenient additional controls for basic audio and phone <sup>48</sup> functions, as well as operation of the multifunction display.
●	●	●	●	●	Power windows, all with one-touch express-up/down.
●	●	●	●	●	Electronic cruise control.
●	●	●	●	●	4-way (tilt/telescoping) power steering column linked to driver's seat memory.
●	●	●	●	●	Driver-programmable easy-exit feature.
●	●	●	●	●	Auto-dimming rearview mirror.
●	●	●	●	●	12-volt power outlet in cabin and cargo area.

### CLIMATE CONTROL

●	●	●	-	-	Dual-zone climate control with individual driver and front passenger control of temperature, speed and airflow distribution via hard keys (airflow and temperature only) or the COMAND system.
-	-	-	●	●	4-zone climate control. Rear-cabin operating panel with dual temperature, speed and airflow distribution controls.
●	●	●	●	●	Electrostatic dust and pollen filter.
●	●	●	●	●	Humidity/dewpoint sensor reduces window fogging during humid weather and helps prevent overdrying of cooled air.
●	●	●	●	●	Tunnel mode offers one-touch closing of all windows, the sunroof and cabin air intake via the air-recirculation button.

### SEATING

●	●	●	●	●	10-way power-adjustable front seats, each with 3-position memory. Driver's and passenger's adjustable lumbar support. Driver's seat memory includes steering column and outside mirror positions.
-	-	-	-	●	AMG sport front seats.
○ <sup>47</sup>	○ <sup>47</sup>	○ <sup>47</sup>	-	●	Heated front seats.
-	-	-	○ <sup>47</sup>	○ <sup>47</sup>	Heated and Active Ventilated Seats.
○ <sup>47</sup>	●	○ <sup>47</sup>	○ <sup>47</sup>	●	60/40-split-folding 2nd-row seatbacks and flip-forward seat cushions.
-	●	-	-	-	Folding rear-facing two-passenger 3rd-row seat.
●	●	●	-	-	MB-Tex upholstery and trim.
○ <sup>47</sup>	○ <sup>47</sup>	○ <sup>47</sup>	●	-	Leather upholstery and trim.
-	-	-	-	●	AMG Premium Leather upholstery with Alcantara shoulder inserts.
●	●	●	●	-	Leather-trimmed steering wheel and shift knob
-	-	-	-	●	AMG leather- and Alcantara-trimmed sport steering wheel with aluminum shift paddles.
●	●	●	○ <sup>47</sup>	○ <sup>47</sup>	Burl Walnut wood trim on dashboard, console, doors and shift gate.
○ <sup>47</sup>	-	-	●	●	Black Birdseye Maple wood trim on dashboard, console, doors and shift gate.

### INSTRUMENTATION

●	●	●	●	●	Electronic analog speedometer, tachometer and quartz clock. Electronic bar-graph fuel and coolant temperature gauges.
-	-	-	-	●	AMG black guages with white markings and AMG RACETIMER <sup>10</sup> in multifunction display.
●	●	●	●	●	Multifunction display in instrument cluster, scrolled via steering-wheel controls to operate and display various menus and vehicle features: <ul style="list-style-type: none"> <li>• Trip meter and outside temperature indicator.</li> <li>• Digital speedometer, Maintenance System (see below) and oil-level check.</li> <li>• Radio station, CD player/changer, iPod<sup>®</sup> playlist/track (with optional iPod Integration Kit) and SIRIUS Satellite Radio.<sup>48</sup></li> <li>• DVD-based Navigation System route guidance.<sup>48</sup></li> <li>• Vehicle reminder and message indicator.</li> <li>• Driver-programmable settings for instruments and lighting, vehicle and convenience features.</li> <li>• Trip computer (elapsed time, fuel consumption and distance to empty).</li> <li>• Telephone Integration Kit phone book.<sup>48</sup></li> <li>• Distronic Adaptive Cruise Control settings.<sup>48</sup></li> </ul>
●	●	●	●	●	Mercedes-Benz Maintenance System Plus displays distance remaining to next basic maintenance service, indicates type of service due and provides automatic reminder when service interval draws near. System also monitors brake-pad wear.

### RESTRAINT SYSTEMS

●	●	●	●	●	<b>Integrated Restraint System:</b> <ul style="list-style-type: none"> <li>• Driver and front passenger are each provided with a dual-stage front air bag (adaptive for the front passenger), a side-impact air bag and a 3-point seat belt with an Emergency Tensioning Device (ETD) and adaptive belt force limiter.<sup>14</sup></li> <li>• 2nd-row outboard passengers are each provided with a side-impact air bag and a 3-point seat belt with an ETD and belt force limiter.<sup>14</sup></li> <li>• 2nd-row center passengers and 3rd-row passengers (E 350 Wagon) are each provided with a 3-point seat belt.</li> </ul>
●	●	●	●	●	<b>Window Curtain Air Bags:</b> <ul style="list-style-type: none"> <li>• In a side impact exceeding a preset threshold, a multichamber air bag deploys along the front and rear side-door windows on the affected side of the vehicle.<sup>14</sup></li> <li>• An integrated rollover sensor automatically deploys the ETDs and, if deemed necessary, the Window Curtain Air Bags in the event of a detected rollover.<sup>14</sup></li> </ul>

### RESTRAINT SYSTEMS (continued)

●	●	●	●	●	<b>Occupant Classification System (OCS):</b> <ul style="list-style-type: none"> <li>• OCS automatically turns the front passenger's front air bag on or off and adjusts the air bag inflation rate based on the weight category determined by weight sensor readings from the front passenger seat.<sup>49</sup></li> </ul>
●	●	●	●	●	Tele Aid Automatic Collision Notification engages the SOS function if an air bag or ETD deploys. <sup>17</sup>
●	●	●	●	●	Universal LATCH (Lower Anchors and Tethers for Children) system at rear outboard seating positions. Selectable passenger seat-belt retractors help secure child seats. <sup>14</sup>
●	●	●	●	●	Front seat belts include manually height-adjustable shoulder belts and lower points attached to seat frames. Outboard 2nd-row shoulder belts are automatically height-adjusting (sedans) or manually height-adjustable (E 350 Wagon).
●	●	●	●	●	Active Front Head Restraints power-adjust for height, manually adjust fore-aft and automatically height-adjust as seat is moved fore-aft.
●	●	●	●	●	PRE-SAFE <sup>®</sup> helps prepare the cabin for a possible collision before one occurs. If PRE-SAFE senses a possible accident based on brake pedal application pattern, steering-wheel input pattern or Electronic Stability Program activation level, it will take action to help protect you better depending on the situation, including: <ul style="list-style-type: none"> <li>• Electrically tensioning the front seat belts.</li> <li>• Adjusting the front passenger seat for potentially more favorable air-bag and seat-belt effectiveness.</li> <li>• Closing the side windows and sunroof<sup>5</sup> (if a possible rollover is detected).</li> </ul>

### AUDIO/NAVIGATION/TELEMATICS

●	●	●	●	●	Cockpit Management and Data (COMAND) system.
●	●	●	●	●	harman/kardon <sup>®</sup> LOGIC7 <sup>®</sup> digital surround-sound system.
●	●	●	●	●	Integrated single-feed 6-disc CD changer.
●	●	●	●	●	Auxiliary audio input jack in glovebox (not available with optional iPod Integration Kit).
●	●	●	●	●	Tele Aid System uses GPS satellites plus a cellular link to provide 24-hour live assistance for: emergency aid (SOS button), roadside assistance (Wrench button) or information ( <i>i</i> -button). <ul style="list-style-type: none"> <li>• Basic Tele Aid Security &amp; Care service includes Automatic Collision Notification, Stolen Vehicle Recovery, Remote Door Unlock service and Dealer Connect.<sup>17</sup></li> </ul>

E 350	E 350	E 320	E 550	E 63	E 350	E 350	E 320	E 550	E 63
SEDAN	WAGON	BLUETEC <sup>®</sup>	SEDAN	AMG	SEDAN	WAGON	BLUETEC <sup>®</sup>	SEDAN	AMG

**LOCKING/SECURITY**

●	●	●	●	●	SmartKey remote control integrates: Remote Door Lock/Unlock buttons, Tailgate Unlock button (or power tailgate open) and panic alarm. Driver may selectively unlock only the driver's door and fuel filler or all doors plus the tailgate and fuel filler.
●	●	●	●	●	SmartKey offers infrared-remote opening/closing of windows and sunroof.
●	●	●	●	●	Driver-programmable drive-away locking automatically locks the doors when the car reaches 9 mph.
●	●	●	●	●	Night security illumination uses the car's exterior lights to help illuminate a path after parking.
●	●	●	●	●	Anti-Theft Client Alarm Notification with remote panic feature.
●	●	●	●	●	Locator lighting uses the car's lights to help illuminate a return path when the car is remote-unlocked in darkness. Unlocking car activates illuminated entry system.
●	●	●	●	●	Integrated 3-button garage door control, compatible with HomeLink <sup>®</sup> components and some other systems.
●	●	●	●	●	Tele Aid GPS-based Stolen Vehicle Recovery helps law enforcement agencies track and recover stolen vehicle. <sup>17</sup>
●	●	●	●	●	Tele Aid Remote Door Unlock. <sup>17</sup>
●	●	●	●	●	Tele Aid Automatic Alarm Notification alerts Mercedes-Benz to contact vehicle owner if antitheft alarm sounds. <sup>17</sup>

**INDIVIDUAL OPTIONS**

○	●	-	○	-	4MATIC <sup>™</sup> all-wheel drive (includes 5-speed automatic transmission).
-	-	-	-	○	DISTRONIC Adaptive Cruise Control.
○	-	○	○	○	Electronic Trunk Closer (Electronic Tailgate Closer standard E 350 Wagon).
○	●	○	○	●	60/40-split-folding rear seatbacks and flip-forward seat cushions.
○	○	○	●	●	Leather upholstery (AMG Premium Leather upholstery on E 63 AMG).
○	○	○	-	-	Wood/leather steering wheel (also included with <i>designo</i> editions. Not available E 63 AMG).
●	●	●	-	○	Burl Walnut interior wood trim.
○	-	○	○	○	Parktronic audiovisual parking assist.
○	○	○	○	○	Metallic paint (no-charge option on E 550 Sport Sedan and E 63 AMG).
○	-	○	○	○	Panorama Roof.
○	○	○	○	○	Rear side window blinds.
○	○	○	○	○	iPod <sup>®</sup> Integration Kit.
○	○	○	○	○	Voice Control.

● Standard. ○ Optional or included with a package. - Not available. Please see page 51 for Endnotes.

**OPTION PACKAGES**

○	-	-	●	-	<b>Sport Package (no-charge option):</b> <ul style="list-style-type: none"> <li>18" staggered-width 10-twin-spoke alloy wheels (non-staggered with 4MATIC).<sup>6</sup></li> <li>Sport rear bumper with dual chrome tailpipes.</li> <li>Lowered sport-tuned suspension.</li> <li>Blue-tinted glass.</li> <li>Black Birdseye Maple wood trim.</li> <li>White-color gauges with matte chrome trim.</li> </ul>
○	-	-	○	-	<b>AMG Sport Package:</b> <ul style="list-style-type: none"> <li>AMG-design front and rear bumper.</li> <li>18" staggered-width AMG 5-spoke wheels (non-staggered with 4MATIC).<sup>6</sup></li> <li>AMG sport steering wheel with shift paddles.</li> </ul>
○	○	○	○	○	<b>Premium 1 Package:</b> <ul style="list-style-type: none"> <li>DVD-based Navigation System.</li> <li>SIRIUS Satellite Radio (standard E 63 AMG).</li> <li>Hands-Free Communication System (standard E 63 AMG).</li> <li>Power rear-window sunshade (rear side window blinds on E 350 Wagon).</li> </ul> E 350 Sedan, E 350 Wagon and E 320 BLUETEC add: Heated front seats. E 550 and E 63 AMG add: Heated/Active Ventilated front seats and comfort headrests.
○	○	○	○	○	<b>Premium 2 Package:</b> Includes contents of Premium 1 Package plus: <ul style="list-style-type: none"> <li>Bi-Xenon headlamps with Active Curve Illumination.</li> <li>Corner-illuminating front foglamps.</li> <li>Heated headlamp washers.</li> <li>Keyless Go.</li> </ul>
-	-	-	-	○	<b>AMG Performance Package:</b> <ul style="list-style-type: none"> <li>14.1" AMG leather-wrapped steering wheel.</li> <li>186-mph speed limiter.<sup>50</sup></li> <li>18" AMG 5-spoke multipiece wheels with high-performance tires.<sup>4</sup></li> <li>Special AMG suspension system.</li> <li>AMG limited slip differential.</li> </ul>

**designo PACKAGES**

○	○	○	○	○	<b>Espresso Edition:</b> <sup>37</sup> <ul style="list-style-type: none"> <li><i>designo</i> Mocha Black metallic paint.</li> <li>Exclusive interior treatment in <i>designo</i> Sand Nappa leather,<sup>38</sup> Brown Poplar wood trim and Alcantara headliner.</li> <li>Black leather and wood trim on steering wheel<sup>39</sup> and shift knob.</li> <li>Black <i>designo</i> floor mats with leather trim.</li> <li>4-zone climate control included on E 350 and E 320 BLUETEC.</li> </ul>
○	○	○	○	○	<b>Graphite Edition:</b> <sup>37</sup> <ul style="list-style-type: none"> <li><i>designo</i> Graphite metallic paint.</li> <li>Exclusive interior treatment in <i>designo</i> Corteccia Nappa leather,<sup>38</sup> Cinnamora Matte wood trim and Alcantara headliner.</li> <li>Black leather and wood trim on steering wheel<sup>39</sup> and shift knob.</li> <li>Black <i>designo</i> floor mats with leather trim.</li> <li>4-zone climate control included on E 350 and E 320 BLUETEC.</li> </ul>

**OPTIONS AND PACKAGES**

**ENDNOTES**

- 1 Estimate based on 21.1-gallon fuel tank capacity and estimated highway fuel economy. Your actual highway mileage may be less than the highway estimate.
- 2 Stated rates of acceleration are based upon manufacturer's track results and may vary depending on model, environmental and road surface conditions, driving style, elevation and vehicle load.
- 3 Braking effectiveness also depends on proper brake system maintenance, and tire and road conditions.
- 4 No system, regardless of how advanced, can overcome the laws of physics or correct careless driving. Please always wear your seat belt. Performance is limited by available traction, which snow, ice and other conditions can affect. Always drive carefully, consistent with conditions. Best performance in snow is obtained with winter tires.
- 5 A small gap is left near the full-close position. For vehicles with Panorama Roof, PRE-SAFE<sup>®</sup> will not automatically close the roof in the event of an impending accident.
- 6 Lower aspect ratio tires and accompanying wheels provide substantially increased treadwear, increased tire noise and reduced ride comfort. Serious wheel and tire damage may occur if the vehicle is operated on rough or damaged road surfaces or upon encountering road debris or obstacles. These tires are not designed for use on snow and ice. Winter tires mounted on appropriately sized and approved wheels are recommended for driving in those conditions.
- 7 With 2nd- and 3rd-row seats folded. Unsecured cargo can become hazardous in a collision. Always secure cargo using floor-mounted tie-downs.
- 8 World Car of the Year Awards association: 2007 World Green Car.
- 9 The E 320 BLUETEC does not meet emissions requirements for California, Connecticut, Maine, Massachusetts, New York, Pennsylvania, Rhode Island or Vermont, and is not available in these states.
- 10 Only for timing use on roads and in conditions where high-speed driving is permitted. Racing on public roads is prohibited under all circumstances and posted speed limits should always be obeyed.
- 11 Requires the use of ultra-low-sulfur diesel fuel. Mercedes-Benz approves the use of B5 bio diesel (approved diesel fuel with a maximum 5% bio diesel content) in all BLUETEC engines. The only approved bio diesel content is one that both meets ASTM D6751 specifications and has the oxidation stability necessary to prevent deposit-/corrosion-related damages to the system (min. 6h, proven by EN 14112 method). Please see your service station for further information. If the B5 bio diesel blend does not clearly indicate that it meets the above standards, please do not use it. The Mercedes-Benz limited warranty does not cover damage caused by non-Mercedes-Benz-approved fuel standards.
- 12 The E 320 BLUETEC uses solid rear disc brakes.
- 13 Rear-wheel-drive models use a 4-link front suspension. 4MATIC<sup>™</sup> models use a double wishbone front suspension.
- 14 WARNING: THE FORCES OF A DEPLOYING AIR BAG CAN CAUSE SERIOUS OR FATAL INJURIES TO A CHILD UNDER AGE 13. THE SAFEST SEATING POSITION FOR YOUR CHILD IS IN THE REAR SEAT, BELTED INTO AN APPROPRIATE, PROPERLY INSTALLED CHILD SEAT, OR CORRECTLY WEARING A SEAT BELT IF TOO LARGE FOR A CHILD SEAT. SEE OPERATOR'S MANUAL FOR ADDITIONAL WARNINGS AND INFORMATION ON AIR BAGS, SEAT BELTS AND CHILD SEATS.
- 15 Front and rear outboard seats only. Front-seat belt force limiters are adaptive.
- 16 SIRIUS<sup>®</sup> and the SIRIUS dog logo are registered trademarks of SIRIUS Satellite Radio Inc. NFL<sup>®</sup> is a registered trademark of the National Football League. NASCAR<sup>®</sup> is a registered trademark of the National Association for Stock Car Auto Racing, Inc. NHL<sup>®</sup> is a registered trademark of the National Hockey League. NBA<sup>®</sup> is a registered trademark of NBA Properties, Inc. All Rights Reserved. For full Terms & Conditions, visit sirius.com. Pricing and programming are subject to change. Not available in Alaska, Hawaii or Puerto Rico. While the SIRIUS network of satellites and terrestrial antennae provides nearly seamless service throughout the contiguous U.S., SIRIUS service may be unavailable or interrupted for a variety of reasons, including environmental or topographic conditions; in certain locations such as tunnels, parking garages or within or next to large buildings; or near other technologies that can interfere with the SIRIUS signal. Six-month service subscription included with purchase.
- 17 Tele Aid equipment is standard on all E-Class models. First year's Tele Aid Security & Care service provided at no additional cost with subscription. Subscription and acquaintance call required for service to be active. Service operates only where cellular and GPS coverage are available and requires adequate power supply. Owner must authorize vehicle tracking by providing passcode and a valid stolen vehicle police report number. PIN code required to activate Remote Door Unlock. See dealer for details of telematics services.
- 18 Vehicle must be accessible from main roads. Roadside Assistance repairs may involve charges for parts, service and towing. Depending on the circumstances, these services may be provided by an outside service, courtesy of Mercedes-Benz Roadside Assistance. For full details of the Roadside Assistance Program, please see your dealer.
- 19 Concierge Service available only with Tele Aid Luxury & Convenience Package. Traffic Information and Route Assistance use is included as part of the Tele Aid Luxury & Convenience Package and is available at an additional per-use charge when used with the Tele Aid Security & Care service. See dealer for details.
- 20 Performance of the automated voice system varies depending on the noise level in and around the vehicle. Traffic Information is based on available broadcast data, not available in all areas and only provided for routes that have been personalized on the Tele Aid website (up to five routes) or are within a specified radius of your vehicle's present location. See Tele Aid section of MBUSA.com for available cities.
- 21 While the Navigation System provides directional assistance, the driver must remain focused on safe driving behavior, including paying attention to traffic and street signs. The driver should utilize the system's audio cues while driving and should only consult the map or visual displays once the vehicle has been stopped in a safe place. Maps do not cover all areas nor all routes within an area.
- 22 DVD-based maps do not cover all areas nor all routes within an area. One U.S./Canada DVD is included with vehicle.
- 23 iPod<sup>®</sup> is a registered trademark of Apple Computer, Inc. All iPod devices are sold separately. Feature not compatible with iPod Shuffle. See dealer for details.
- 24 Certain Mercedes-Benz-approved phones support voice interactivity, but not the phone book download feature, with Bluetooth<sup>®</sup> technology. See dealer for details.
- 25 Interface and phone sold separately. See dealer for a list of approved compatible phones.
- 26 Always plug the phone into the cradle for use inside the vehicle or use the Bluetooth interface. Otherwise operating a non-approved phone or radio transmitter with its own attached or built-in antenna while the engine is running can interfere with the vehicle's electronic systems. For safety reasons, the driver should not use a mobile phone while the vehicle is in motion. We encourage the driver to stop the vehicle in a safe location before answering or placing a call. See your Mercedes-Benz dealer or visit www.Wireless4MB.com for current handset availability. Not all approved phones support all system features. See dealer for details.
- 27 BLUETOOTH INTERFACE DOES NOT PROVIDE PHONE CHARGING OR EXTERNAL ANTENNA. PHONE BOOK DOWNLOAD AND VOICE INTERACTIVITY FEATURES ARE DEPENDENT ON SELECTED HANDSET. VISIT WWW.WIRELESS4MB.COM FOR DETAILS.
- 28 Please see your dealer for accessory warranty information.
- 29 DISTRONIC Adaptive Cruise Control is no substitute for active driving involvement. It does not react to stationary objects, nor recognize or predict the curvature and lane layout of the road or the movement of vehicles ahead, and can only apply a maximum of 20% of vehicle braking power. It is the driver's responsibility at all times to be attentive to traffic and road conditions, and to provide the steering, braking and other driving inputs necessary to retain control of the vehicle.
- 30 Drivers are cautioned not to wait for the DISTRONIC Proximity Warning System before braking, as that may not afford sufficient time and distance to brake safely.
- 31 Standard E 550 Sport Sedan. Optional E 350 Sedan. Not available E 350 Wagon, E 320 BLUETEC and E 63 AMG.
- 32 Standard E 550 Sport Sedan. Optional E 350 Sedan, E 350 Wagon and E 320 BLUETEC. AMG Premium Leather on E 63 AMG.
- 33 Standard E 550 Sport Sedan and E 63 AMG. Optional E 350 Sedan. Not available E 350 Wagon and E 320 BLUETEC.
- 34 Cashmere upholstery only available with Burl Walnut wood trim.
- 35 Optional at extra cost on E 350 Sedan, E 350 Wagon and E 320 BLUETEC.
- 36 Not available with Cognac Brown/Black upholstery.
- 37 Requires Premium 1 Package on all models.
- 38 3rd-row seats in E 350 Wagon *designo* editions upholstered in Black Nappa leather.
- 39 E 63 AMG *designo* editions include steering wheel trimmed exclusively in Black leather. Feature not available with wood/leather steering wheel and shift knob.
- 40 Unsecured cargo can become hazardous in a collision. Always secure cargo using floor-mounted tie-downs.
- 41 Please see your dealer for warranty details as well as for terms, conditions and pricing for extended warranty options. Surcharges for extended warranties apply after the first year.
- 42 Whichever comes first. Requires use of 229.5-spec oil and high-performance fleece oil filter. Driver is responsible for monitoring fluid levels and tire pressure between service visits. See Maintenance Booklet for details.
- 43 On models with different-sized front and rear tires, which cannot be rotated, dealer will inspect tires and set inflation pressure. Follow tire manufacturer's recommendations.
- 44 For full details of Sign and Drive service, as well as the Roadside Assistance Program, please see your dealer.
- 45 Certain restrictions may apply. Terms, conditions and dealer participation may vary.
- 46 European Delivery discount available on select models. Please see your dealer for details.
- 47 Optional or part of an Option Package. See optional equipment listing on page 50.
- 48 When equipped with this feature.
- 49 OCCUPANT CLASSIFICATION SYSTEM (OCS) IS DESIGNED TO TURN THE FRONT PASSENGER'S FRONT AIR BAG OFF WHEN THE SYSTEM SENSES THE WEIGHT OF A TYPICAL CHILD 12 MONTHS OLD OR LESS, PLUS THE WEIGHT OF A STANDARD APPROPRIATE CHILD RESTRAINT. SEE OPERATOR'S MANUAL FOR IMPORTANT ADDITIONAL INFORMATION ON THIS SYSTEM, AND FOR FURTHER INFORMATION REGARDING THE TRANSPORTATION OF CHILDREN HEAVIER THAN A TYPICAL 12-MONTH-OLD.
- 50 Please obey all speed laws.