



THE NEW 2007 GL-CLASS



Mercedes-Benz

The GL-Class

Exclusivity is best enjoyed in company.

The GL-Class is a powerful, exclusively luxurious, roomy SUV with a lot to offer, whether you're on your way to an executive meeting, or on your way to the cottage.

Its bold and alluring design features a powerful V-8 engine, 7G-TRONIC automatic transmission, AIRMATIC self-levelling air suspension, and a spacious interior with space for up to seven people.

It's a vehicle that not only meets, but surpasses the demands of discerning customers just like you. You're in the best of company.

Welcome to the GL-Class. Welcome to the club.

GL 450 shown with optional 19" 5-twin-spoke light-alloy wheels.







The GL-Class

SPACE	
Seating comfort	4
DESIGN	
Interior and exterior design	6
SAFETY	
PRO-SAFE™	8
DYNAMICS	
Engines and transmissions	10
On the road and off	12
COLOURS AND MATERIALS	
Paint, upholstery and trim	14
EQUIPMENT	
Standard equipment	16
Optional equipment	17
Accessories	18
TECHNICAL FEATURES	
Technical data	20
SERVICE AND SUPPORT	
Customer care and website	21



Wide open spaces.

The GL-Class features a spacious interior, with room to comfortably seat up to 7 passengers, and provides outstanding transport capacity.

At first glance, the GL-Class is impressive, to say the least. Its bold exterior dimensions underline its interior spaciousness and ride comfort. The GL-Class' three seat rows seat up to 7 passengers, in highly comfortable, full-sized, ergonomically optimized seats. Ample head and leg room, coupled with amazing all-around visibility for each passenger results in a highly relaxing and comfortable ride. The third row of seats electronically folds down to free up additional cargo space. With the second and third rows collapsed, the GL-Class has a cargo capacity of 2,300 litres, giving you room to pack almost anything.



GL 450 shown with optional Rear-Seat Entertainment System.



Power meets elegance. Inside and out.

A distinctive exterior with powerful design elements reveals an elegant interior of fine wood and leather.

The GL-Class' exterior, in one word: impressive. The GL-Class' attractive exterior combines smooth curves, distinctive contours and powerful design elements. Unmistakable Mercedes-Benz front-end design with pronounced details such as the powerfully structured radiator grille, emphasizes the vehicle's functional, expressive character. A solid, imposing side view gives the impression of length, and ensures good visibility and a bright atmosphere in the passenger compartment. Clearly structured rear design evokes a sense of calm, assured power. The wide track and the concise wheel arches give the rear a broad, sturdy stance.



GL 450 shown with optional Active Bi-Xenon Headlamps Package.

The interior design of the GL-Class combines strength and solidity with luxurious appointments to satisfy the most discerning of drivers. Settle into wonderfully comfortable seats, with attractive wood inlays and ARTICO man-made leather seams, all part of a stylish and spacious two-colour interior concept.

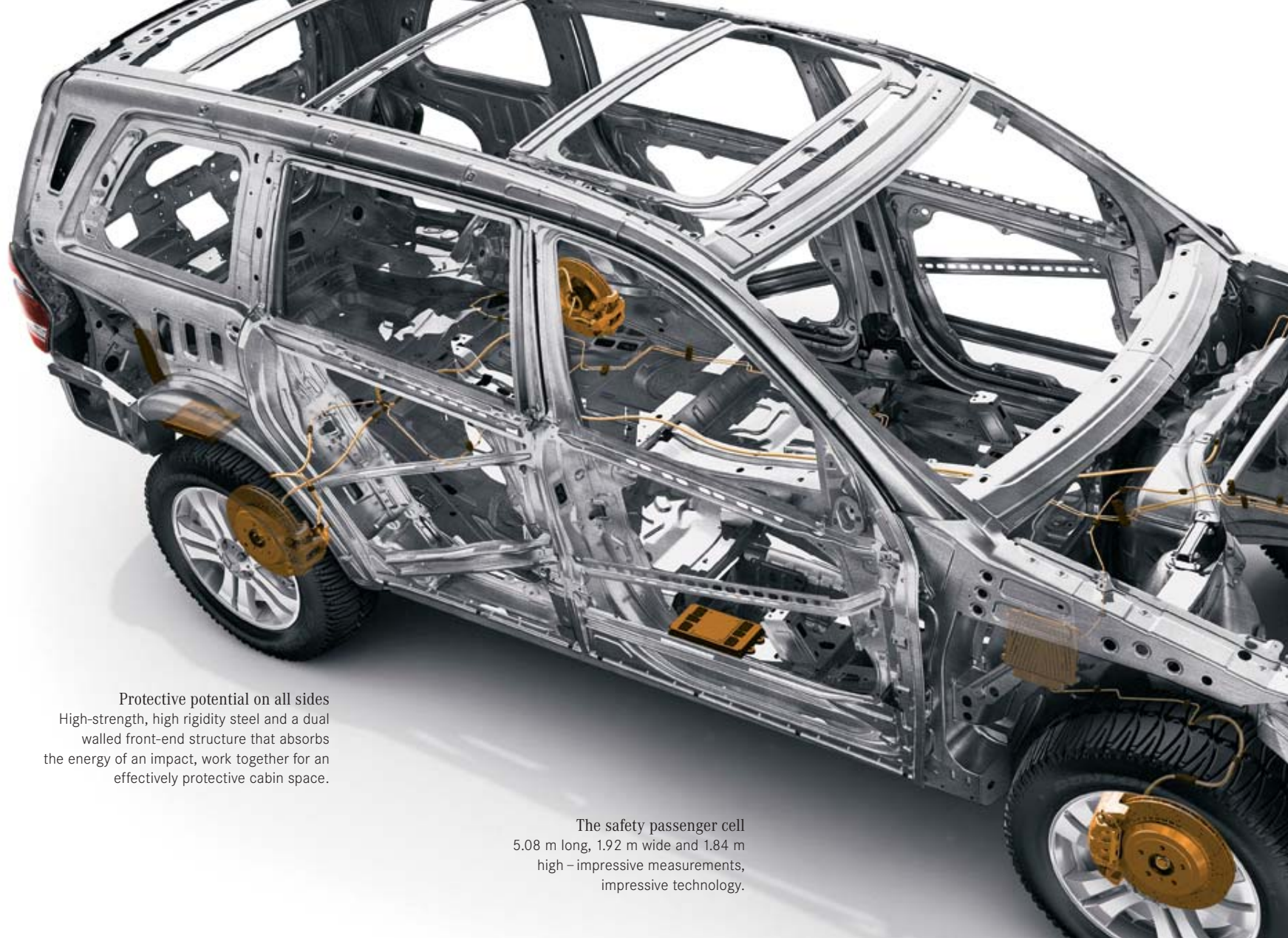
Behind the wheel, catch all the controls in a single glance. The multi function display shows all your important data, like the selected driving program and audio settings.

Make yourself at home in your own private lounge. Up to seven people can relax in the GL 450's luxurious seats. With EASY ENTRY, you can fold down a seat in the second row, to comfortably reach the third. The panoramic glass roof lets in ample natural lighting, while a sliding sunroof lets in the fresh air and sunlight up front. Backseat passengers will feel like they're right up front with the optional Rear-Seat Entertainment System. Watch DVDs on dual 7" colour screens set in the headrests of the first row. With its eleven speakers, subwoofer and surround sound, the optional harman/kardon LOGIC7® digital surround system provides an amazing audio experience.

Power seat adjustment is standard for both driver and front passenger seats.

Colour-Play

Matte and shiny chrome applications set accents. The two-coloured trim in Alpaca Grey and Cashmere Beige, adds to the spacious feel of the interior.



Protective potential on all sides

High-strength, high rigidity steel and a dual walled front-end structure that absorbs the energy of an impact, work together for an effectively protective cabin space.

The safety passenger cell

5.08 m long, 1.92 m wide and 1.84 m high – impressive measurements, impressive technology.

In terms of safety, you're well on your way.

PRO-SAFE™ – Mercedes-Benz' new philosophy on safety.

On-site electronics

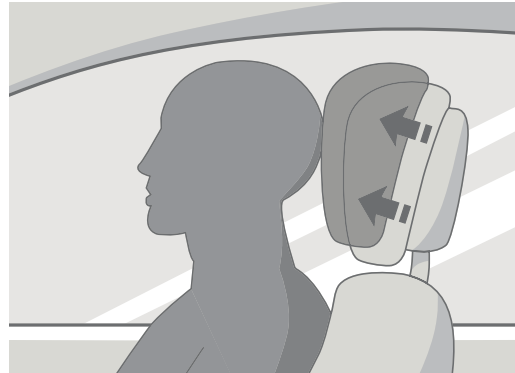
The safety systems constantly monitor vehicle stability.



PRO-SAFE™, the new philosophy on safety no longer separates security into individual active and passive safety systems. Instead, Mercedes-Benz has adopted an integrated, future-oriented way to handle safety.

Assistance systems permanently monitor the driving situation. At the onset of known typical dangers, systems automatically warn and intervene where possible. Functions such

as ESP® and ESP® trailer stabilization ensure comfortable, and above all, safe driving. Further systems, like the user-friendly operation and display concepts minimize driver distractions, keeping eyes on the road. In the GL-Class, driver and front passenger seat air bags protect from injury. Side and curtain air bags complete this protective potential. The ARCADE advanced sensor control system monitors all of the GL-Class' restraint systems, and evaluates signals from a multitude of crash sensors and on-board systems. It then triggers the appropriate air bags and belt tensioners.



NECK-PRO crash-active headrests

With NECK-PRO, in a rear-end collision, the headrests on the front seats move forward and upward, reducing the danger of injury.



New power
At work in the GL 450 features
one of the strongest V-8
engines of its class.



Powerful forces, well under control.

The GL450's 335 hp engine, 7G-TRONIC automatic transmission and 4MATIC™ all-wheel drive: Power, comfort and security while you drive.

The GL-Class features a newly developed, high-displacement 335 hp V-8 engine that matches power with a quiet ride. Enjoy harmonious, superior output and torque delivery, optimum smoothness and refinement, while maintaining moderate fuel consumption levels.

The 7G-TRONIC seven-speed automatic transmission and 4MATIC™ permanent all-wheel drive work hand in hand. The 7G-TRONIC automatic transmission seamlessly delivers the right gear for driving conditions and your driving style. It provides great acceleration while maintaining comfort. Shift it manually with the simple touch of a button.

The 4MATIC™ all-wheel drive system helps you stay on the road, even in unfavourable conditions. If the wheels are unequally burdened on uneven paths, and threaten to spin, 4MATIC™ automatically intervenes and directs braking to individual wheels, ensuring load balance. With integrated ABS and traction control (ASR) functions, the electronic driving dynamics system (4ESP®/4ETS) guarantees optimal traction – furthering the benefits of all-wheel drive.

Consider roads optional.

Go from smooth, paved highways to wild dirt roads, with the optional Off-Road Package.

The GL-Class is an experience on any road. The standard AIRMATIC air suspension ensures you a relaxing ride. The 4-wheel independent suspension provides constant vehicle position, regardless of driving terrain. Add the optional Off-Road Package and get even more great features.

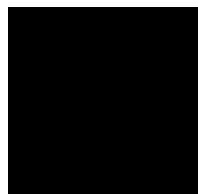
- The Adaptive Damping System (ADS) brings more driving fun. With three available damper settings get a completely individualized drive at the touch of a button.
- Hill-Start Assist eases the ride uphill, the 4-channel Anti-Lock Braking System (ABS) reduces the brake-path on the incline, and the Electronic Stability Program (ESP®) makes driving with a trailer noticeably more secure. In addition, the ride height of the GL-Class can be raised to 600 mm – so creek beds are no longer such an obstacle.
- A two-stage distributor transmission allows you to switch gears appropriately for both on and off-road conditions. The low-range gear offers improved traction on loose dirt, even when going uphill. In off-road mode, the electronic drive-dynamic system (4ESP®/4ETS) adapts to the conditions of the terrain, ensuring precision braking and appropriate response from the 7G-TRONIC automatic transmission.

GL 450 shown with optional Active Bi-Xenon Headlamps Package, Off-Road Package and accessory stainless steel running boards with rubber studs.





SINGLE COLOUR PAINT



040 Black



960 Alabaster White

METALLIC PAINT



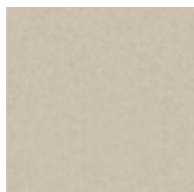
197 Obsidian Black



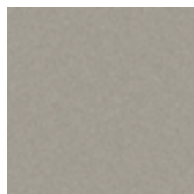
359 Capri Blue



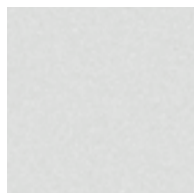
544 Barolo Red



693 Desert Silver



723 Pewter Silver



775 Iridium Silver



816 Everest Green



349 Alpine Rain

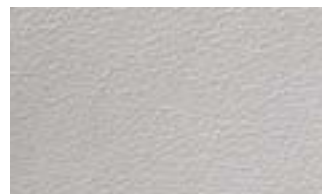
ARTICO LEATHER
(Man-made leather.)



101 Black



104 Cashmere Beige

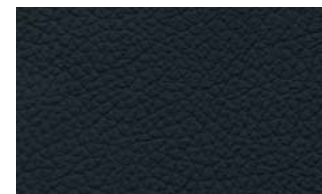


108 Alpaca Grey



474 Verde Brook

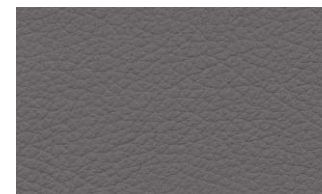
LEATHER



201 Black



204 Cashmere Beige



208 Alpaca Grey

WOOD



Burl Walnut

High-expression colours
Enhance the character of the GL-Class with your favourite colour. Choose from a multitude of paints which follow through into the interior, where fine leather and colour-complementing woods complete your GL 450.



STANDARD EQUIPMENT (SELECTION)

- 6 disc CD-changer with MP3 capabilities
- 18" 5-spoke light-alloy wheels
- 4MATIC™ all-wheel drive
- 7G-TRONIC 7-speed automatic transmission
- Air bags with multilevel release, side air bags in front seats and second row, window curtain air bags for all three rows
- AIRMATIC (4-wheel self-levelling air suspension)
- Antitheft system with tow-away protection
- ARCADE crash sensor system
- Auto-dimming mirrors
- Automatic climate control
- Brake Assist (BAS)
- Burl Walnut wood trim
- Cargo cover
- COMAND display system with 6.5" colour display and AM/FM/CD capabilities
- Compass
- DIRECT SELECT gearshift with steering-wheel gearshift buttons
- Downhill Speed Regulation (DSR) with switch

- Electronic Stability Program (ESP®) including ABS and traction control (ASR)
- Heated front seats
- Heated windshield washer system
- ISOFIX child seat anchor for second and third row
- Leather-wrapped multifunction steering wheel
- Multifunction steering wheel
- NECK-PRO crash-active headrests for driver and front-seat passenger
- Parameter steering (speed-sensitive steering)
- PARKTRONIC
- Power windows for first, second and third row
- Rain sensing windshield wipers
- Rear side windows and tailgate with privacy glass
- Roof rails
- Tele Aid emergency calling system¹
- Tilting/sliding sunroof
- Tire pressure loss warning system
- Third row seat with electric fold-down function

¹First year's monitoring provided at no cost with subscription. Subscription is required for service to be active. Tele Aid operates only where cellular and Global Positioning System coverage are available. ²Not available with leather and wood trimmed steering wheel. ³Only available with Premium Package. ⁴DVD-ROM maps do not cover all areas nor all routes within an area. One Canada/U.S. DVD-ROM is included with this vehicle.

INDIVIDUAL OPTIONS

Cargo net
DISTRONIC
harman/kardon LOGIC7® surround sound system with 11 speakers plus subwoofer
Heated multifunction steering wheel ²
Heated seats for second row
KEYLESS GO
Leather and wood-trimmed steering wheel
Leather upholstery
Power liftgate
Rear-Seat Entertainment System with two 7" LCD screens, DVD player and headphones
Rear side air bags
Rear view camera ³
Tire pressure monitoring system

OPTION PACKAGES

Active Bi-Xenon Headlamps Package: Active Bi-Xenon Headlamps with washers and cornering lights.
Interior Light and Leather Upholstery Package
Off-Road Package: Adaptive Damping System. Stainless underride protection in front and rear.
Premium Package: COMAND with navigation. ⁴ Electrically adjustable steering column. Passenger and driver's side memory. Power folding side mirrors. Power liftgate with crush protection. Rear-Audiosystem for second row.
Rear Seat Climate Control Package: Rear air-conditioning. THERMOTRONIC 3-Zone automatic climate control.



GL 450 shown with stainless steel running board with rubber studs, 20" Titanium Silver 5-spoke light-alloy wheels and optional Active Bi-Xenon Headlamps Package.

Accessorize to individualize.

You're an individual. You take pride in setting yourself apart. You also enjoy the finer things in life. Satisfy all of your discerning needs with genuine Mercedes-Benz accessories. Make an impact on your lifestyle, and those in it, with your individualized GL-Class. All genuine Mercedes-Benz accessories are designed and manufactured to the highest standards for design, engineering, appearance, quality, form and function. Add nuance and unique refinement to your GL-Class in terms of appearance, luxury, and convenience. It's an ideal way to add your own distinctive style to an already stunning automobile.



Roof rack or box
Roof rack highlights design and serves as a basic carrier for M, L and XL-sized boxes of durable, elegant, and aerodynamic design. Available in titanium metallic and matte silver, with opening on left or right.



Designer wheel
Opt for the larger, elegant, light-alloy Porrima 20" incenio designer wheel with 5-spoke design, and emphasize the power and practical design of your GL-Class.



Luggage divider net
An easy-to-use partition net can be stretched behind the first or second seat row to create separate compartments – very useful for trips with packed luggage, or packed "special friends."



iPod® integration kit
You've spent time carefully filling your iPod® with the great music you love. Now you can enjoy every minute of every song as you cruise in your GL 450, courtesy of the iPod® integration kit.



GL 450 shown with optional Off-Road Package, optional 19" 5-twin-spoke light-alloy wheels, accessory chrome tailgate sill protector and accessory crossbars.

	GL 450 4MATIC™
Engine type	V-8
Total displacement	4,663-cc
Net power	335 hp @ 6,000 rpm
Net torque	339 lb-ft @ 2,700-5,000 rpm
Acceleration, 0 to 100 km/h ¹	7.6 seconds
Tire size	265/60 R 18
Fuel economy, ² city-highway estimate	Information N/A
Fuel tank capacity	100 L
Turning circle	12.1 m curb-to-curb
Dimensions:	
Wheelbase	121.1 in/3,075 mm
Overall length	200.3 in/5,088 mm
Overall height	72.4 in/1,840 mm
Overall width	83.7 in/2,127 mm
Cargo capacity:	
Second and third row in use	10.6 cu ft/300 litres
Third row folded down	43.8 cu ft/1,240 litres
Second and third row folded down	81.2 cu ft/2,300 litres
Towing capacity	7,500 lb/3,402 kg
Coefficient of drag	0.38
Curb weight	5,357 lb/2,430 kg

¹ Stated rates of acceleration are based upon the manufacturer's track results and may vary depending upon model, environmental and road surface conditions, driving style, elevation and vehicle load. ² 2007 figures not yet available at time of publication. Estimates are based on the Government of Canada's approved criteria and testing methods. The actual fuel consumption of this vehicle may vary. Refer to the *Fuel Consumption Guide*.

Mercedes-Benz Customer Care

24-hour Roadside Assistance

During the basic warranty coverage of 48 months and the time duration of the optional Extended Limited Warranty, Mercedes-Benz Roadside Assistance will be at your service. We'll bring you some gas, replace a flat tire with your spare, or jumpstart your car. In the event of a mechanical breakdown, if attempts by our Roadside Assistance technician have not made your vehicle safely operable, towing service will be provided to the nearest Mercedes-Benz dealership. Assistance is available 24 hours a day, every day, to anyone driving a Mercedes-Benz anywhere in Canada or the continental U.S.¹

Wear and tear coverage

For 24 months or 40,000 km (whichever comes first) many items normally considered "wear and tear," such as light bulbs, wiper blade refills, and brake pads and discs, are covered. If necessary, an authorized Mercedes-Benz dealer will replace these parts at no charge to you.

Customer service

Owning a Mercedes-Benz means that when you have a question, we're here to help. Customer Service is open from 9 a.m. to 5 p.m. EST, Monday through Friday, and is staffed with knowledgeable Mercedes-Benz people who can talk you through the finer points of working your car's audio system – or even assist you in locating the nearest Mercedes-Benz dealership. Just call 1-800-387-0100. It's that simple.

Mercedes-Benz warranties

The Mercedes-Benz New Car Limited Warranty covers defects in materials or workmanship for 48 months or 80,000 km, whichever occurs first. To widen your window of confidence, you can opt for a Mercedes-Benz Extended Limited Warranty as well.²

Time for basic maintenance? Ask your GL-Class.

No two drivers are the same. That's why the Flexible Service System in your GL-Class monitors certain indicators of oil condition, engine loads, rpm, operating temperatures and your driving habits to determine when basic maintenance is really necessary.³ Then a display on the dash reminds you to contact your Mercedes-Benz dealer for an appointment. So you can spend less time servicing your GL-Class and more time enjoying your life.

Trip interruption reimbursement

If a breakdown covered by your New Car Limited Warranty occurs more than 80 km from your home, leaves your Mercedes-Benz vehicle inoperable or unsafe to drive, and requires overnight repairs, we've got you covered. You will be reimbursed up to \$500 for hotel accommodations and up to \$600 for alternate travel expenses per incident while your car is being repaired at an authorized Mercedes-Benz dealership.

Log on to learn more mercedes-benz.ca

Looking for more Mercedes-Benz information? Visit mercedes-benz.ca to open an online window to Mercedes-Benz Canada. Get information about any model, including financing and leasing options, upcoming vehicles, or purchase Mercedes-Benz the Collection gifts and personal accessories. Our website also offers details about the Mercedes-Benz Extended Limited Warranty, Customer Care, and the history of Mercedes-Benz.



¹Vehicle must be accessible from main roads. Roadside Assistance may involve charges for parts, service and towing. Depending on the circumstances, these services may be provided by an outside service provider, courtesy of Mercedes-Benz Roadside Assistance. For full details of the Roadside Assistance Program, please see your dealer. ²Please see your dealer for warranty details as well as for terms, conditions and pricing for extended warranty options. ³Maintenance items are identified in the Service Booklet for each model. Driver is responsible for monitoring fluid levels and tire pressures between service visits. Limitations apply.

© 2006 Mercedes-Benz Canada Inc. Marketing Communications.

All illustrations and specifications contained in this brochure are based on the latest product information available at the time of publication.

Mercedes-Benz reserves the right to make changes at any time, without notice, in colours, materials, equipment, specifications and models.

Any variations in colours shown are due to reproduction variations of the printing process. Illustrations may include test situations.

Some vehicles may be shown with non-Canadian equipment. Some vehicles are shown with optional equipment.

harman/kardon and LOGIC7 are registered trademarks of Harman International Industries Inc. iPod is a registered trademark of Apple Computer, Inc.

Printed in Canada

MBC-060GL07-10

Mercedes-Benz Canada Inc. 98 Vanderhoof Avenue. Toronto, Ontario M4G 4C9

1-800-387-0100

www.mercedes-benz.ca

GL 450 shown on cover with optional Active Bi-Xenon Headlamps Package, Off-Road Package and accessory 20" 5-spoke light-alloy wheels.