

DAIMLERCHRYSLER

EPC Compact Installation Guide

Revision 0.8

Software Release 09/99 (10.3.9)

September 1999

Table Of Contents:

1 INTRODUCTION 3

2 SYSTEM REQUIREMENTS 3

 2.1 OPERATING SYSTEMS 3

 2.2 HARDWARE 3

3 WINDOWS 95/98/NT4 STANDALONE INSTALLATION 4

4 ACROBAT READER INSTALLATION 8

5 UNINSTALL EPC COMPACT 10

6 RELEASE NOTES 11

7 INSTALLATION OF MS LOOPBACK ADAPTER 11

1 Introduction

This document illustrates the installation flow for the DaimlerChrysler (DCAG) EPC Compact.

The installation software should be self-explanatory and the user should be able to install the EPC Compact by following the on-screen instructions. This document is provided for reference purposes.

2 System Requirements

Attention:

The system on which you are installing the EPC Compact must be clear of any previous DCAG EPC.

2.1 Operating Systems

EPC Compact is installable on following platforms:

- **Windows NT4.0** with Service Pack 4 or higher (Only standalone, not as a client or Server)
- **Windows 95** (Only standalone, not as a client)
- **Windows 98** (Only standalone, not as a client)

2.2 Hardware

A check will be performed to ensure that you have the necessary hardware and software to allow the EPC Compact install to proceed.

The system will verify:

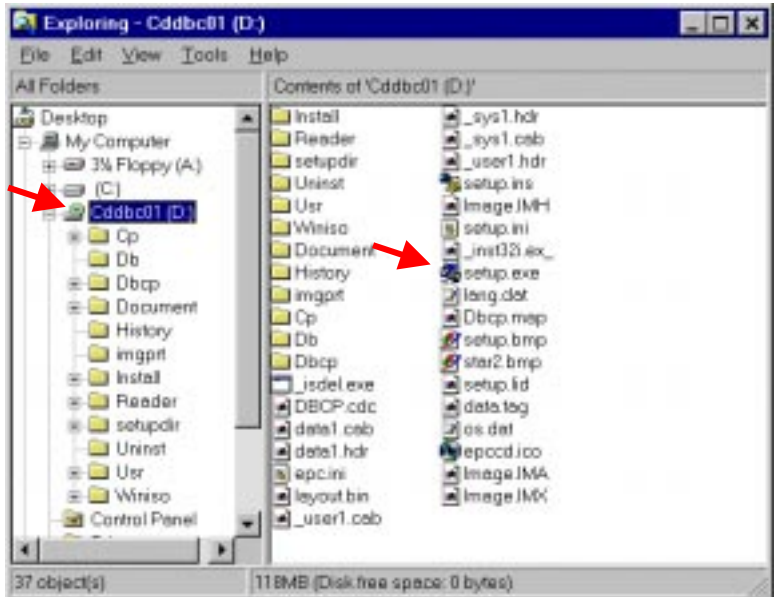
	W95/98	NT4
CPU	at least Pentium	at least Pentium
Screen resolution	1024*768 dots *256 colours	1024*768 dots *256 colours
Memory RAM	Minimum 16 MB	Minimum 32MB
CD-ROM drive	Yes (>3 speed recommended)	Yes (>3 speed recommended)
Network Card/TCP-IP	Not Required	Required
Hard disk space	20 Mb free	20 Mb free

- On Windows NT4.0 Standalone machines a network card is required. If your machine does not have a Network card then a 'loopback' adapter can be installed as described in Section 7.
- The installation time depends on the CD-ROM drive speed.

3 Windows 95/98/NT4 Standalone Installation

Start of the Installation

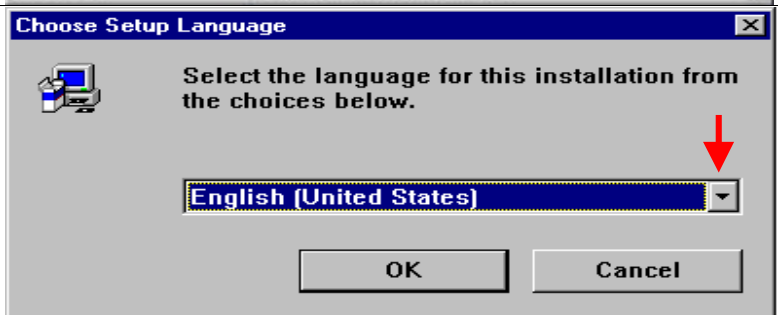
You need to start the installation process from the CD. This CD will be named *CDDBC0x*, where *x* stands for the number, 1 – 6, of the CD. Start the *Explorer*, and look for your CDROM drive containing the CD *CDDBC0x* and doubleclick on the application *setup.exe*.



Language

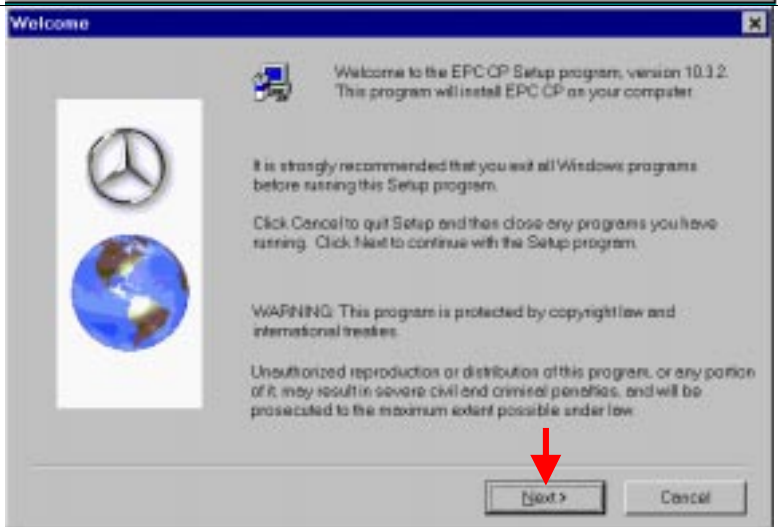
Choose the installation language you require.


Continue with *OK*



Welcome

The Welcome screen reminds you to close all other applications. By clicking on *Next* you confirm your acceptance of the Copyright law and continue with the installation.



 **Installation Instructions**

To View the Installation Instructions press the button. To continue press the Next button.




 **Data Access Key**

In this screen you must enter your Data Access key.

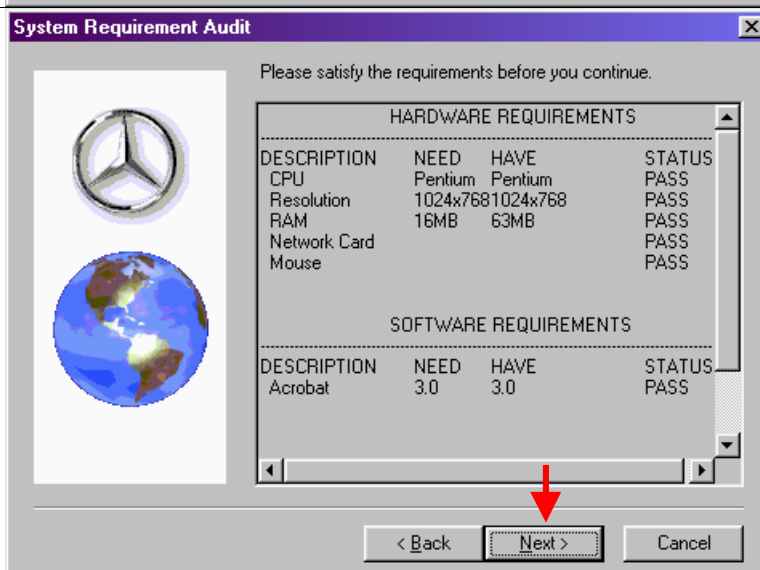
After you have entered the key continue with *Next*.



 **System Requirement Audit**

The installation program will automatically check if your computer has the necessary hardware and software. In the upper half, under STATUS, *PASS* must be shown for each item, otherwise the installation will not continue. The *Need* column is showing you the minimum requirement. The lower half is showing you which additional software for EPC Compact is necessary. This software is provided on CDDBC0x (x = 1-6) and must be installed if it does not already exist on your system.

Continue with *Next*.



Install/Upgrade Acrobat Reader

This screen will only displayed, when Acrobat Reader does not exist on your system!

Acrobat Reader is not absolutely necessary, but it is recommended so that you are able to display the User Manual and Installation Guide.

For additional information (on how to install Acrobat Reader) refer to Chapter 4!

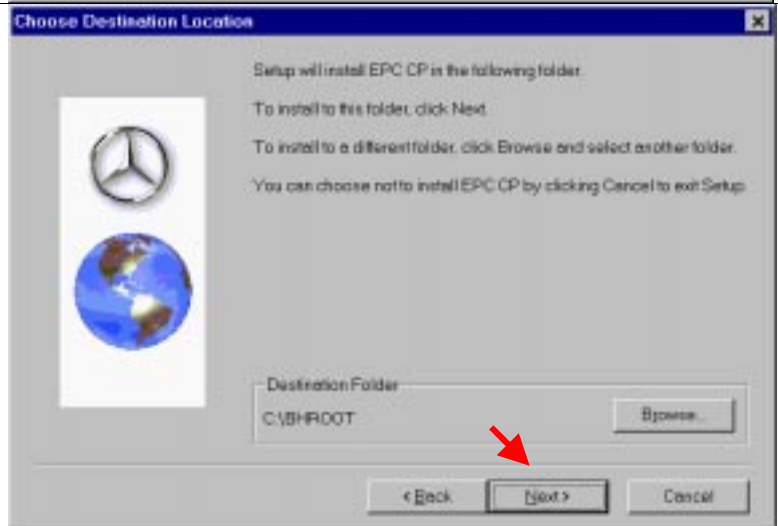
Continue with *Next*.



Choose Destination Location

At this screen you can select the Destination folder in which EPC Compact will be installed. It is recommended that you use the default.

Continue with *Next*.




Select Program Folder

At this screen you can select the Program folder in which EPC Compact will be installed. It is recommended that you use the default.

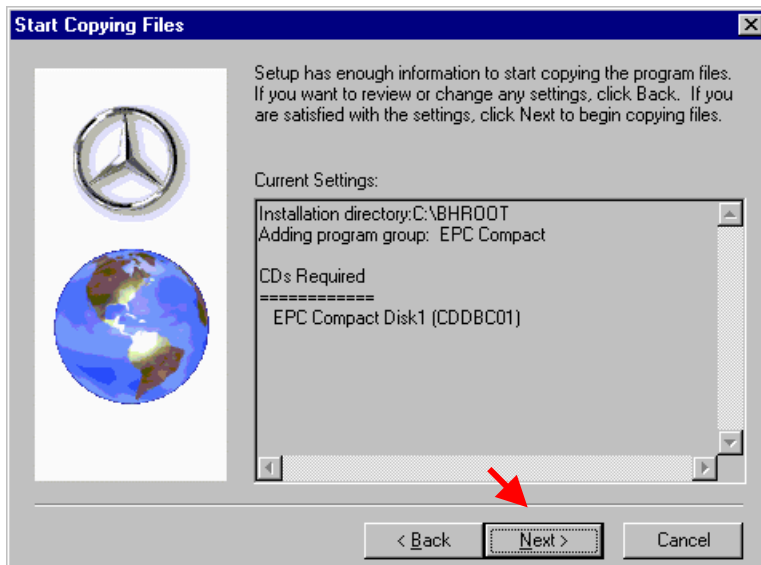
Continue with *Next*.



 **Start Copying Files**

This screen shows you the current settings you have made.


Continue with *Next*.



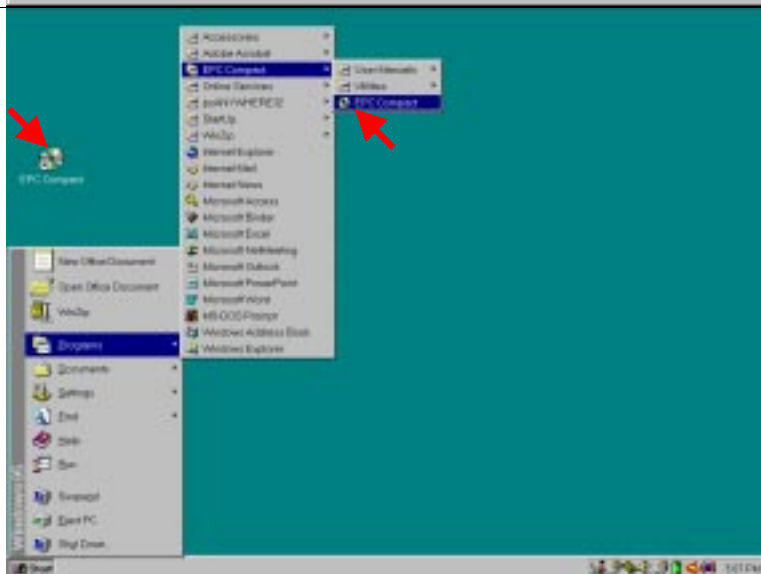
 **Setup Complete**

The installation was successful. To complete it, click on *Finish* to restart your computer. It is very important to restart your computer before you start to use the EPC for the first time.



 **EPC Compact Start**

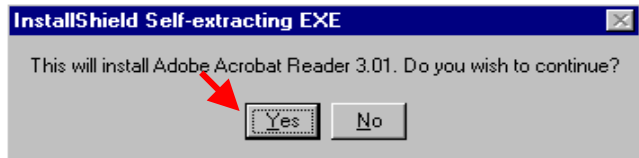
You can start EPC Compact with the icon on the desktop, or using Start/Programs/EPC Compact/EPC Compact as shown.



4 Acrobat Reader Installation

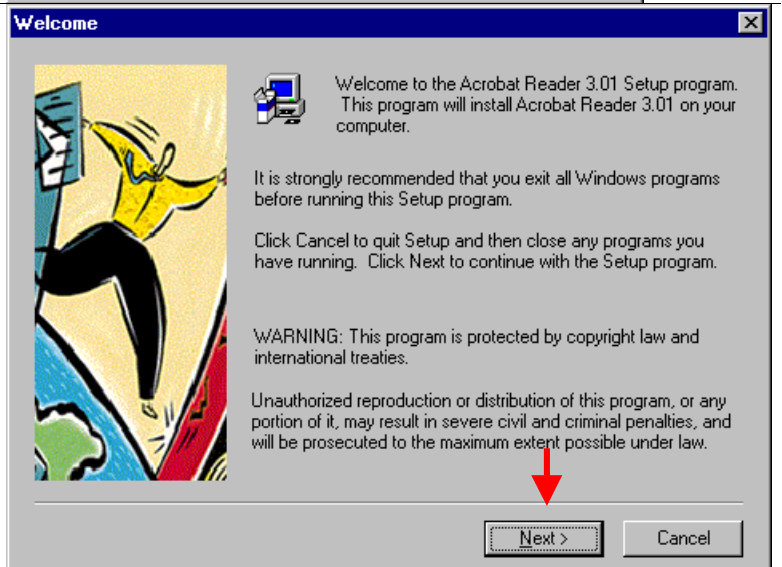
Install Shield Question

If you want *Acrobat Reader*, please answer with *Yes*.



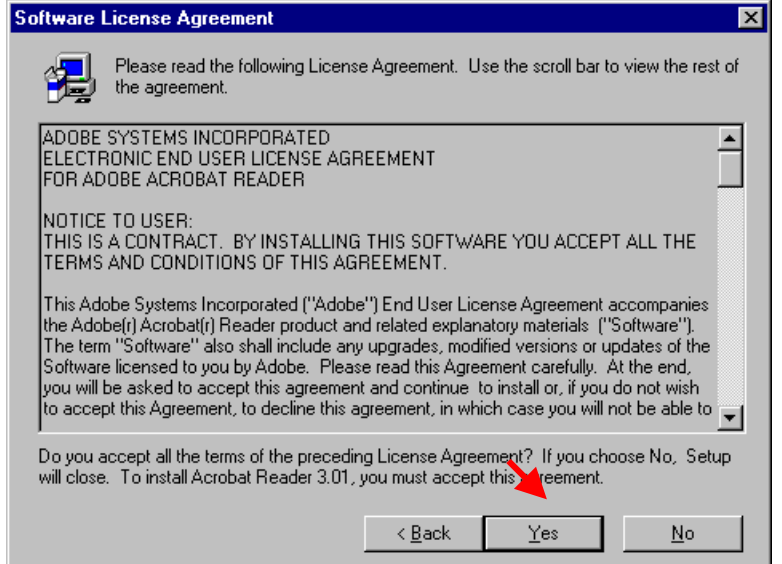
Welcome

The Welcome screen reminds you to close all other applications. With click on *Next* you confirm your acceptance of Copyright law and continue with the installation.



Software License Agreement

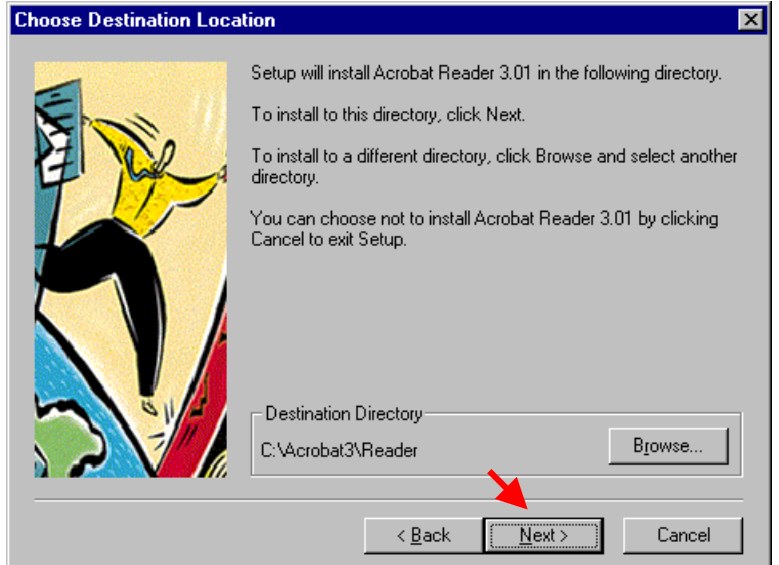
Click on *Yes* to accept the license agreement and continue the installation.



 Choose Destination Location

Here, you can choose a program folder. It is recommended you use the default.

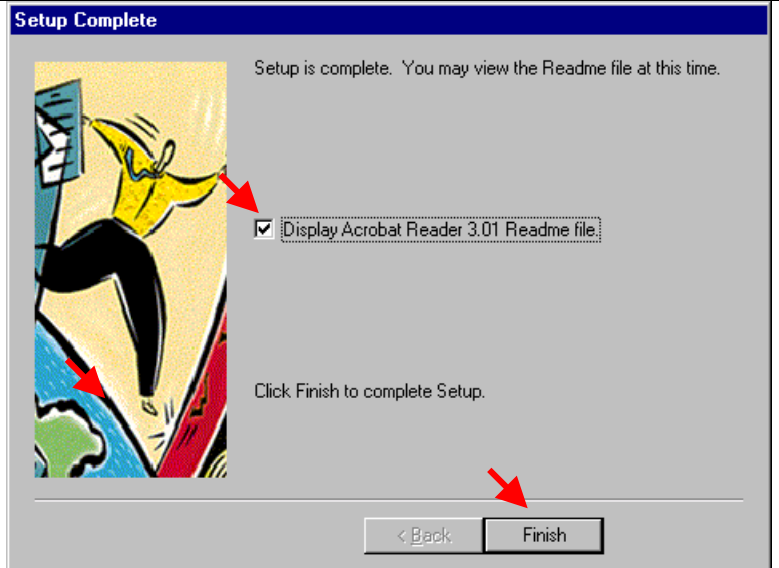
Continue with *Next*.




 Setup Complete

In this screen it is possible to read an information message about the latest changes to Acrobat Reader.

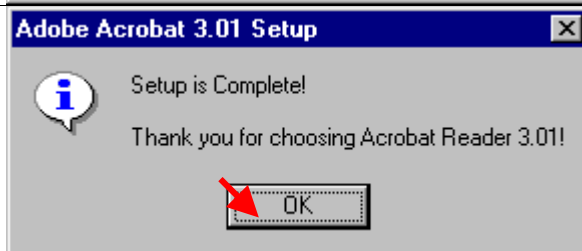
Click on *Finish*.



 Setup is Complete

Setup is now complete. Now you can continue with the EPC Compact installation.

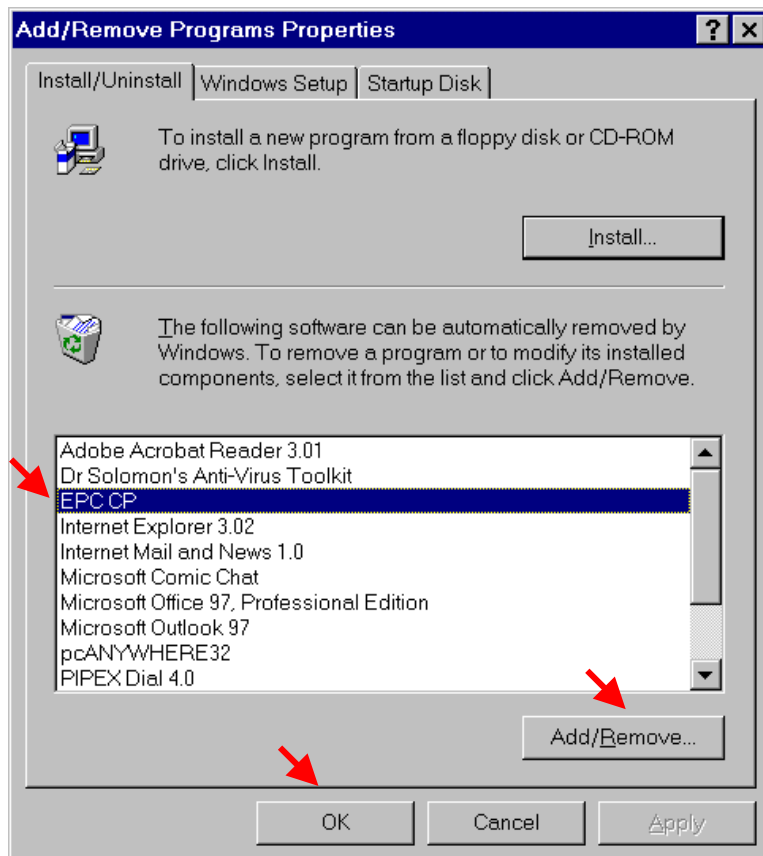
Continue with *OK*.



5 Uninstall EPC Compact

Control Panels-Add/RemoveSoftware

On all platforms (Windows 95/98; WinNT4.0) you can run an uninstall with **Add/Remove Software**. Choose **EPC CP** and delete with **Add/remove**.



6 Release Notes

Note for DCAG:

The graphic on the left-hand side of each of the dialog boxes is a bitmap that measure 120x258. A bitmap for the Release Version of EPC Compact product could be provided to the Bell & Howell Development team for integration into this installation process if required.

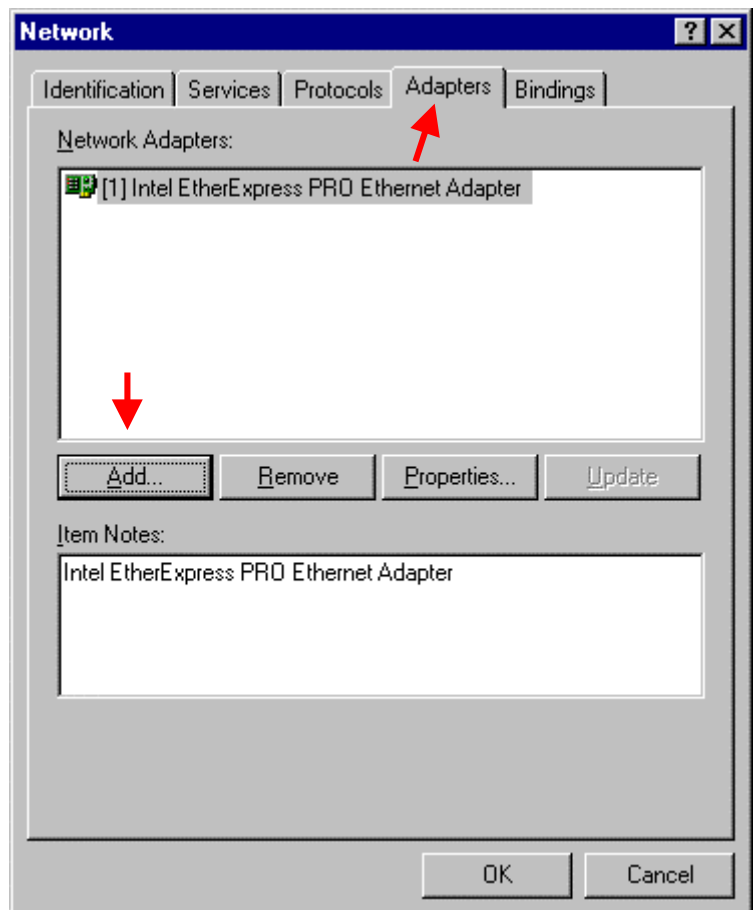
7 Installation of MS Loopback Adapter

A 'Loopback Adapter' is a standard item of software from Microsoft that enables software that requires a Network card, such as EPC Compact, to function correctly when a Network card is not installed on your NT4.0 system. It is available on the Microsoft Windows NT4.0 installation CD.

Network

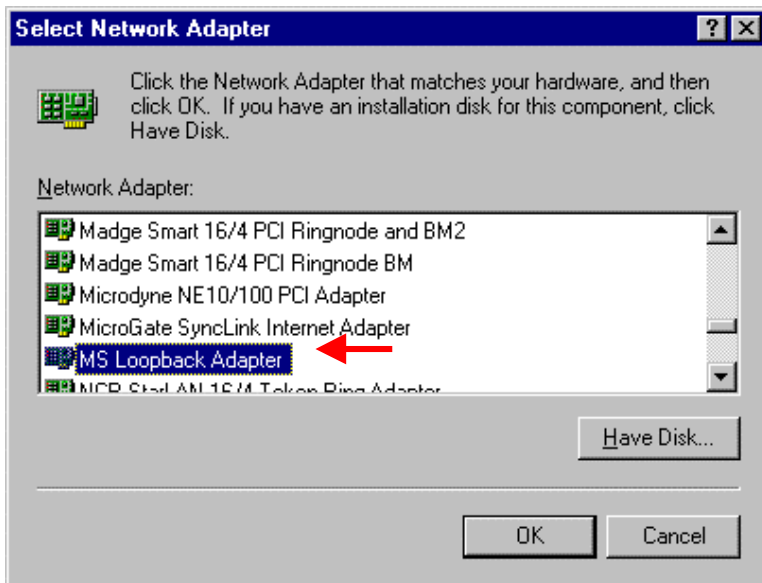
From the Start Menu select Settings, then Control Panel and then choose the icon for Network.

From the dialog choose the tab labelled as Adapters. Select Add.



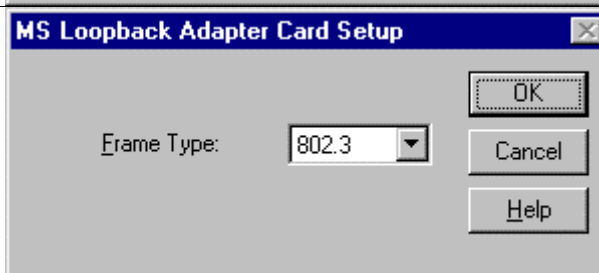
 Select Network Adapter

In the list of Network Adapters search for MS Loopback Adapter, select this and then click **OK**



 MS Loopback Adapter Card Setup

Select the Frame Type 802.3 and click **OK**

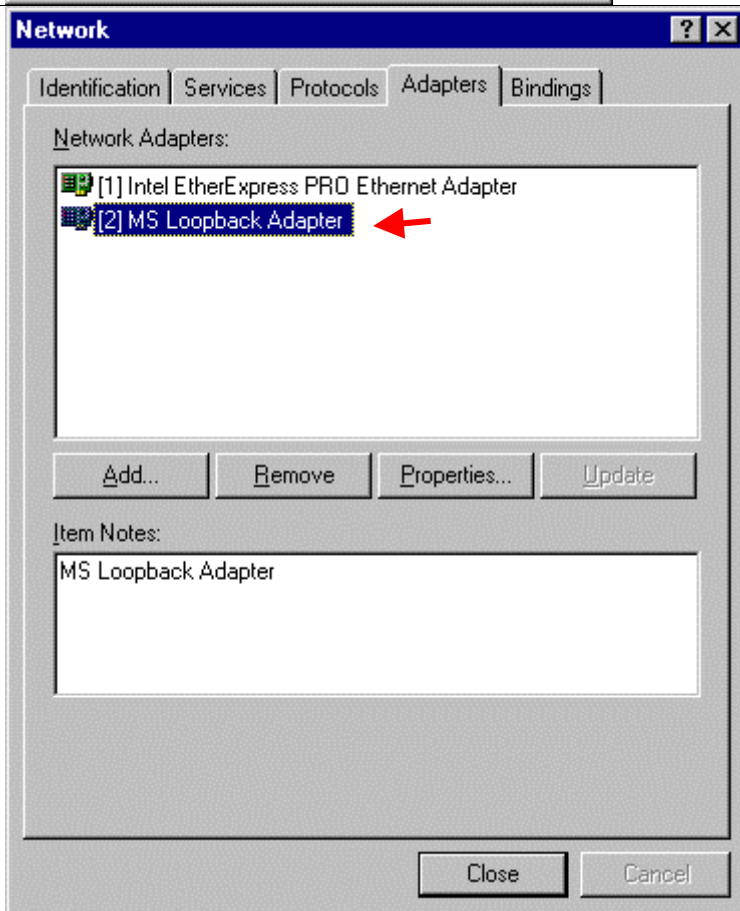


 Network

To install the Loopback Adapter you will need the Windows NT installation CD, all data will be copied over, and then the Loopback Adapter will be installed.

Continue with **Close**

After a Restart you can use the Loopback Adapter as if it is an installed network card.



Now you can install the protocol TCP/IP in the usual manner.