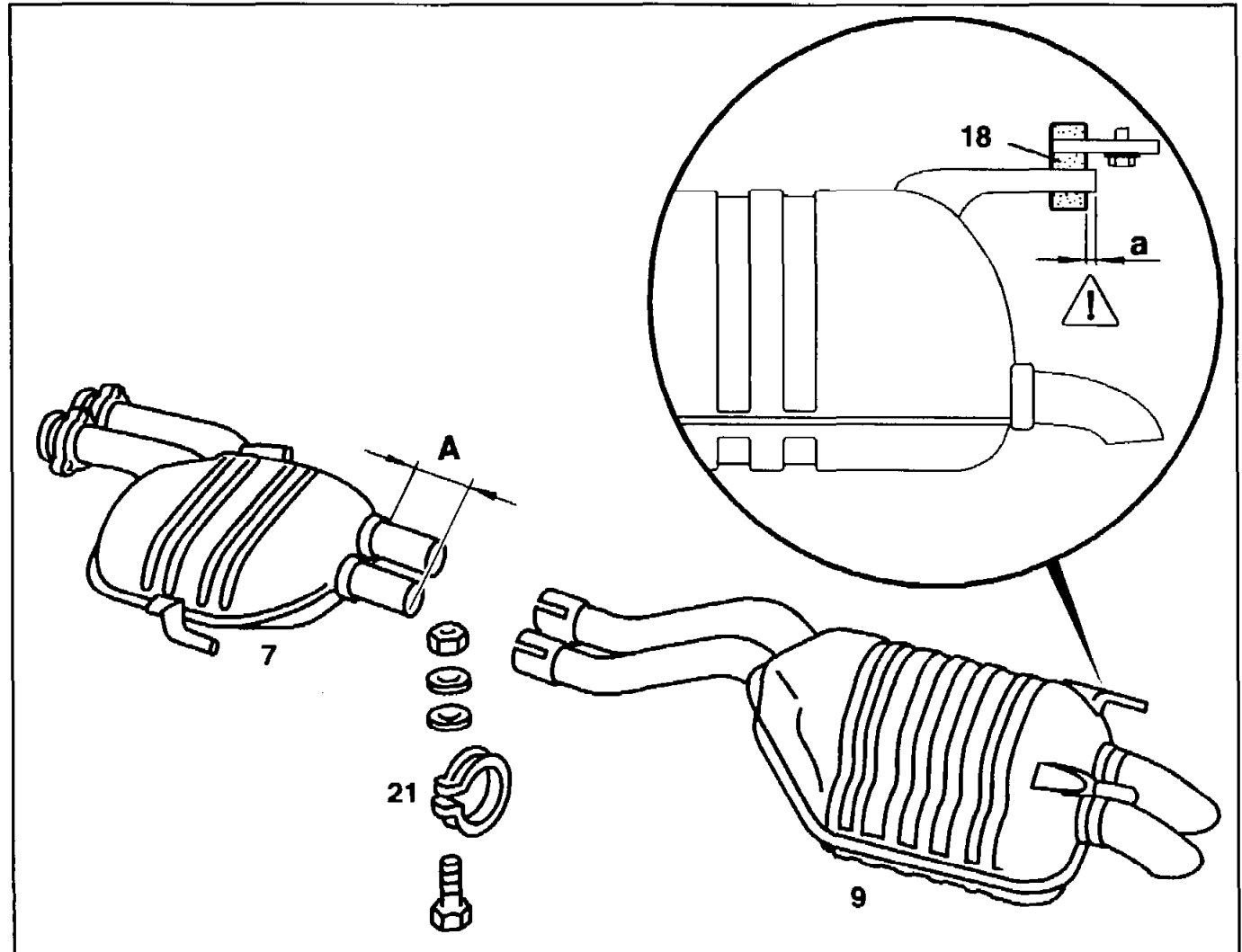





L5	AR49.10-P-4951F	Replacing rear muffler	4.7.94
----	-----------------	------------------------	--------

ENGINE 119, 120
in MODEL 140





	Removal, installation		
	Risk of explosion	Pay attention to accident prevention regulations!	
1	Remove exhaust system downstream of flanged connection, install		AR49.10-P-7280FB F7
2	Mark exhaust pipes between center and rear mufflers (7, 9) at the points specified and saw off	Size "A" = 95 mm	
3	Fit together sawn-off center muffler (7) and new rear muffler (9)	Use exhaust pipe clips (7/2)  When attaching the exhaust system, ensure that the projection "a" of the bracket at rear muffler is not more than 3 – 5 mm at the rubber bush (18) when system is cold	
4	Install in the reverse order		