



M5

AR47.10-P-7000G

Removing and installing fuel level gauge sensor

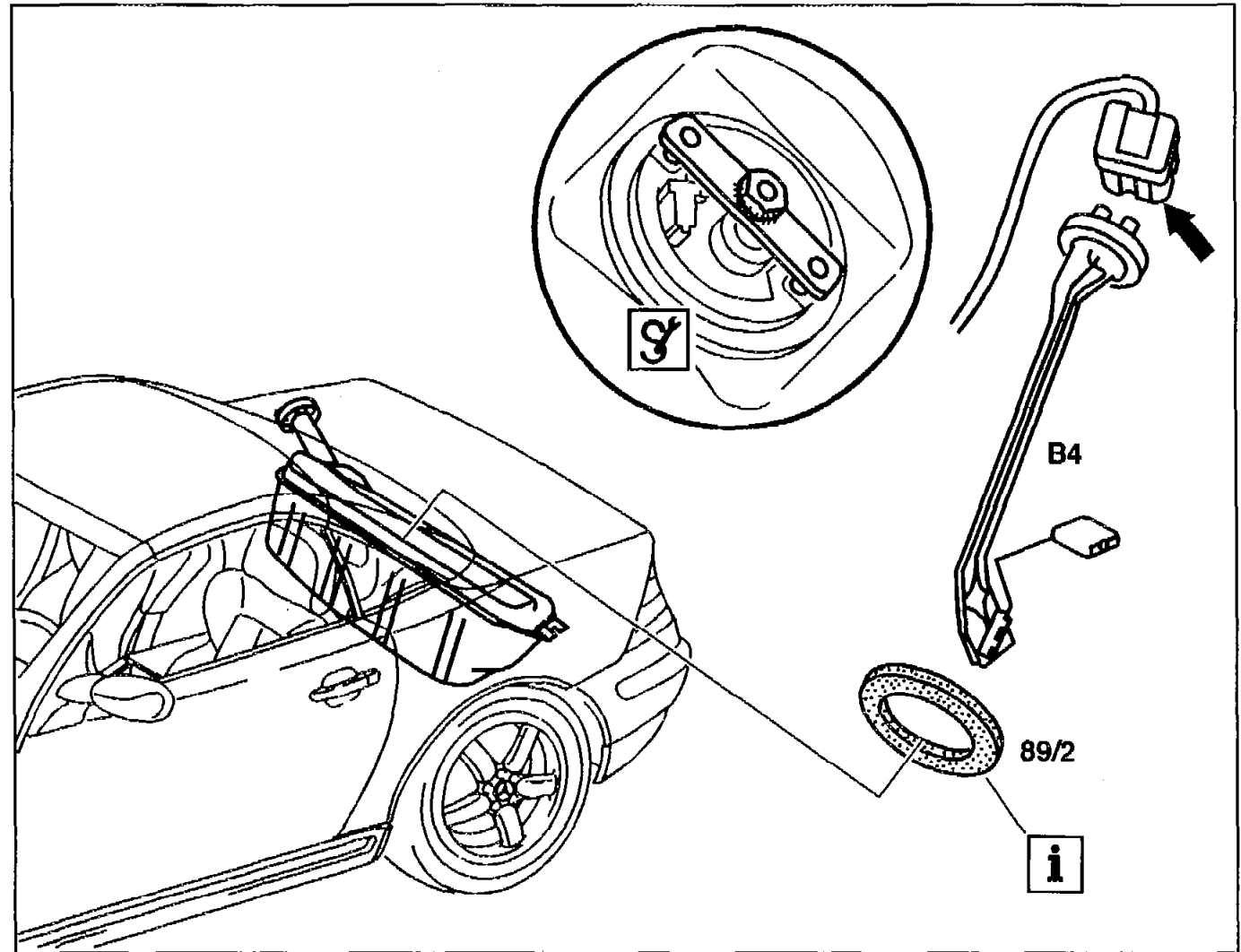
27.2.96





MODEL 170

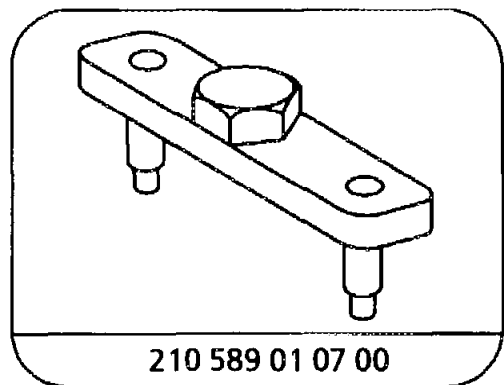
89/2 Seal

B4 Fuel gauge sensor

Arrow Connector



	Removing, installing		
⚠ Danger!	Risk of explosion from ignition. Risk of poisoning from inhaling and swallowing fuel. Risk of injury as a result of fuel coming into contact with skin and eyes.	No fire, naked flame or smoking. Pour fuels only into suitable and appropriately marked containers. Wear protective clothing when handling fuel.	AS47.00-Z-0001-01A D17
1	Empty fuel tank, fill	i If fuel tank is full, pump out about 8 liters of fuel Model 170  as of model year 98	AR47.10-P-4001B H1 AR47.10-P-4001F O1
2	Remove trunk blind		
3	Unplug connector (arrow) for fuel gauge sensor (B4) and pressure sensor  only	Raise trim for fuel tank in trunk for this step	
4	Open bayonet lock of fuel gauge sensor (B4)		210 589 01 07 00
5	Take out fuel gauge sensor (B4)	i Installation: replace seal (89/2). Oil to facilitate installation.	
6	Install in the reverse order		



Pin wrench