



E3	AR30.10-P-3080A	Disassembling, assembling accelerator control	10.9.97
-----------	-----------------	--	----------------

ENGINE 111.946 in MODEL 170.435

ENGINE 111.921 in MODEL 202.018 /078

ENGINE 111.945 in MODEL 202.020 /080

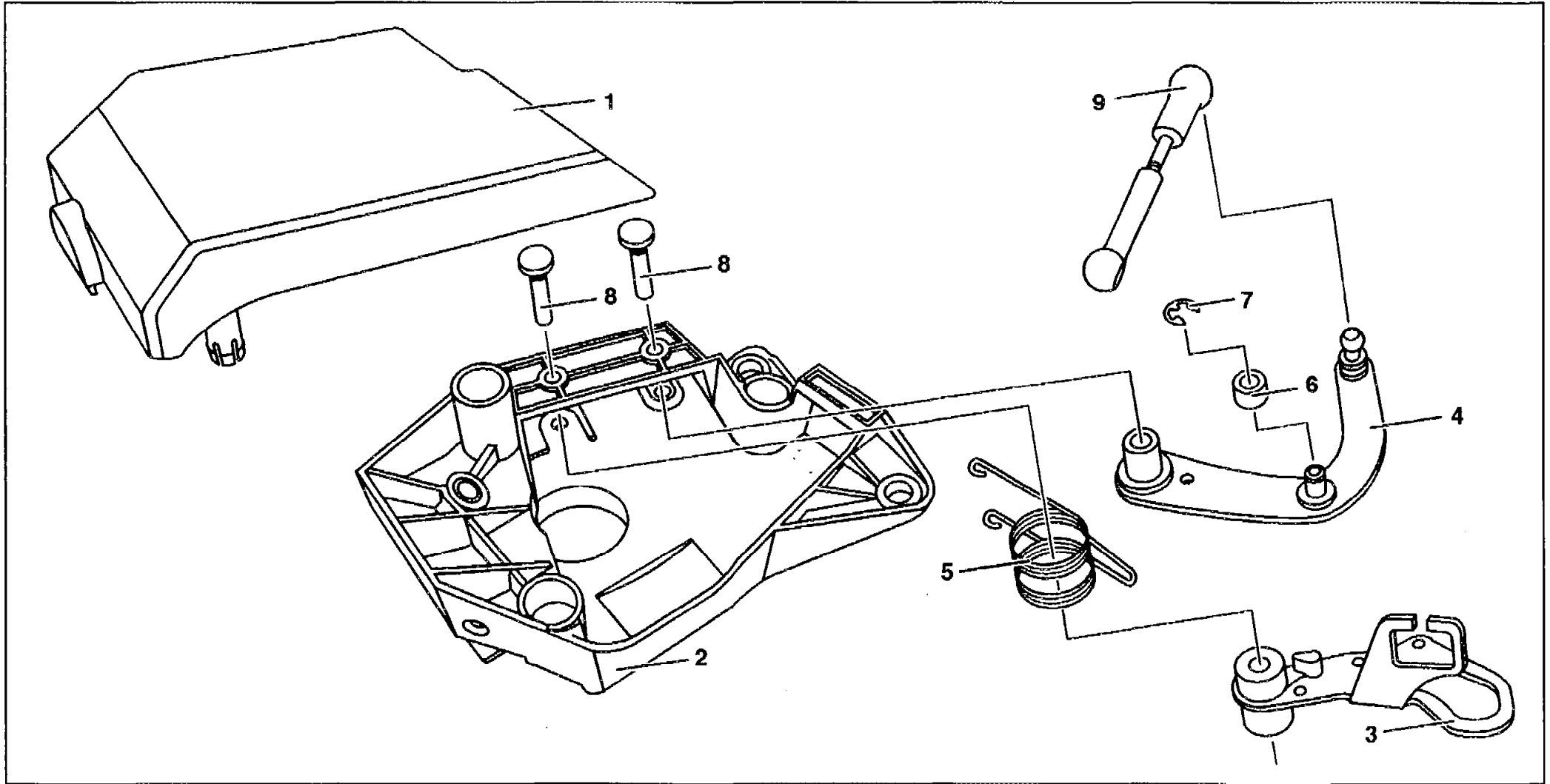
ENGINE 111.974 in MODEL 202.023 /083

ENGINE 111.945 in MODEL 208.335

ENGINE 111.942 in MODEL 210.035 /235

ENGINE 111.970 in MODEL 210.037 /237

ENGINE 111.977 in MODEL 163.136



- 1 Cover
- 2 Bearing bracket
- 3 Fulcrum lever

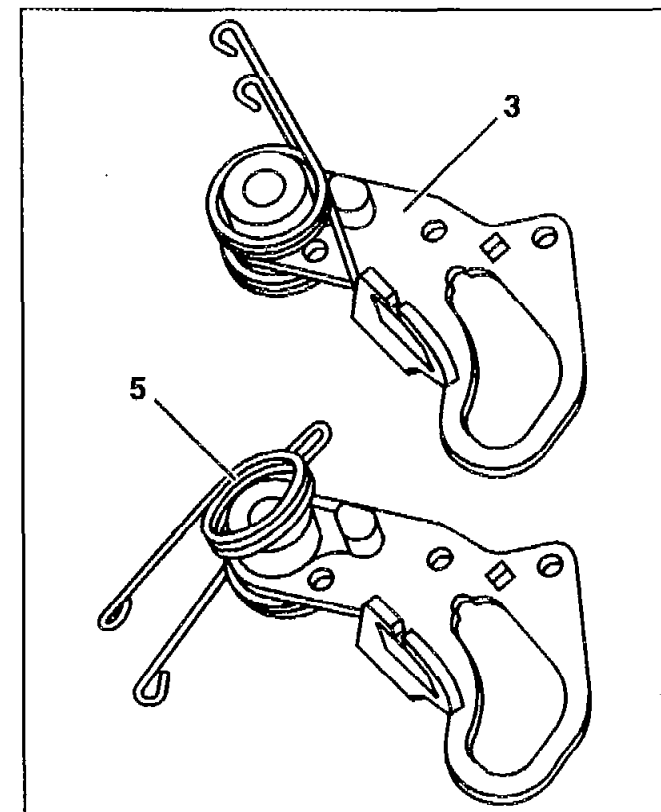
- 4 Control lever
- 5 Torsion spring
- 6 Roller

- 7 Circlip
- 8 Pin
- 9 Connecting rod

P30.10-0295-09

**Removing/installing spring**


- 3 Fulcrum lever
- 5 Torsion spring



P30.10-0296-02

	Disassembling		
1	Remove pin (8) from bearing bracket (2) and from the bearing hole of the fulcrum lever (3)		
2	Remove fulcrum lever (3) together with torsion spring (5)		



3	Detach torsion spring (5) from fulcrum lever (3)		
4	Remove pin (8) from bearing bracket (2) and from the bearing hole of the control lever (4)		
5	Take control lever (4) out of bearing bracket (2)		
6	Remove circlip (7) from control lever (4)	ⓘ Inspect whether circlip (7) can be reused, replace if necessary	
7	Detach connecting rod (9) from control lever		
	Assembling		
8	When assembling, lubricate all bearing points and joints of the accelerator control	ⓘ Anti-corrosion grease	BR00.45-Z-1007-06A BR00.45-Z-1011-06A
9	Attach connecting rod (9) and roller (6) to control lever (4)	ⓘ Secure roller (6) with circlip (7)	
10	Insert control lever (4) with connecting rod (9) into bearing bracket (2)	ⓘ When inserting, ensure that the connecting rod (9) is located in the bearing bracket (2)	
11	Insert pin (8) from above into bearing bracket (2) and into the bearing hole of the control lever (4)	ⓘ Push pin (8) sufficiently far through until the tip of the pin is touching the bottom of the bearing bracket	

12	Fit torsion spring (5) onto fulcrum lever (3)	i See Fig Removing and installing spring Lubricate fulcrum lever (3) at the end faces of the hub and in the bearing hole	
13	Place fulcrum lever (3) with torsion spring (5) into the bearing bracket (2) so that the roller (6) of the control lever (4) is guided by the fulcrum		
14	Alter position of fulcrum lever (3) with torsion spring (5) so that the ends of the spring are guided through the openings of the bearing bracket (2)		
15	Insert fulcrum lever (3) into the bearing point with the aid of the guide slots		
16	Insert pin (8) into the bearing bracket (2) and into the bearing hole of the fulcrum lever (3)	i Push pin (8) sufficiently far through until the tip of the pin is touching the bottom of the bearing bracket	
17	Press both pins (8) sufficiently far into the bearing bracket (2) until there is still a gap of about 0.1 mm to 0.3 mm between the shoulder of the pin (8) and the bearing bracket (2)	i The gap is required in order to ensure the axial clearance and ease of operation of fulcrum lever (3) and control lever (4)	
18	Inspect ease of operation of control lever (4) and fulcrum lever (3)	i The levers should move by themselves from one end position to the other	
19	Tension torsion spring (5) at the slots of the bearing bracket (2)	! Ensure that the ends of the springs are properly locked in place	



20	Inspect operation of accelerator control		
----	--	--	--

Repair products

Number	Designation	Order number
BR00.45-Z-1007-06A	Anti-corrosion grease	001 989 37 51 10
BR00.45-Z-1011-06A	Anti-corrosion grease	001 989 42 51