



E3

AR09.10-P-8221G

Removing and installing intake air scoop

3.8.94

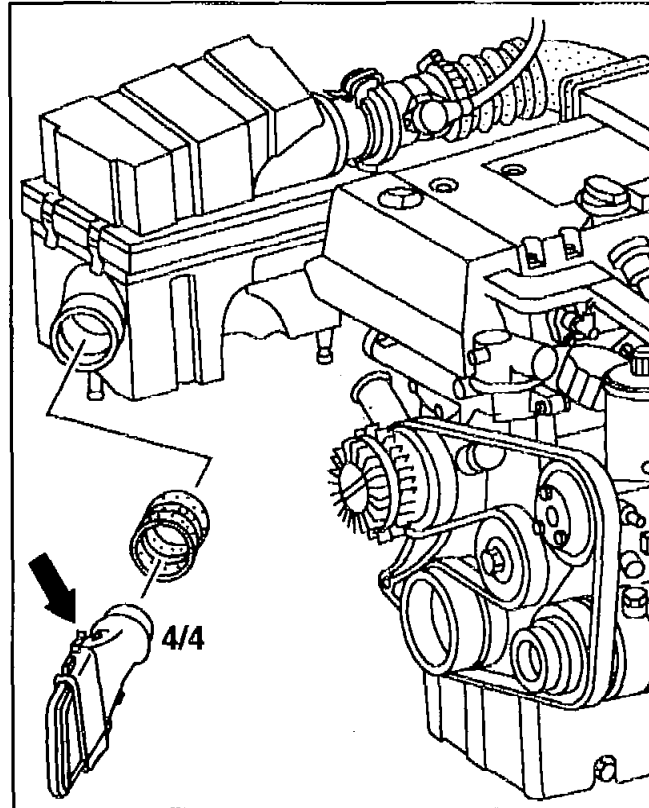
ENGINE 111.920 /921 /940 /941 /943 /944 /945 /946 /947 /960 /961 /973 /974 /975 /977

*Left-hand illustration shows
Model 124 engine 111 HFM*

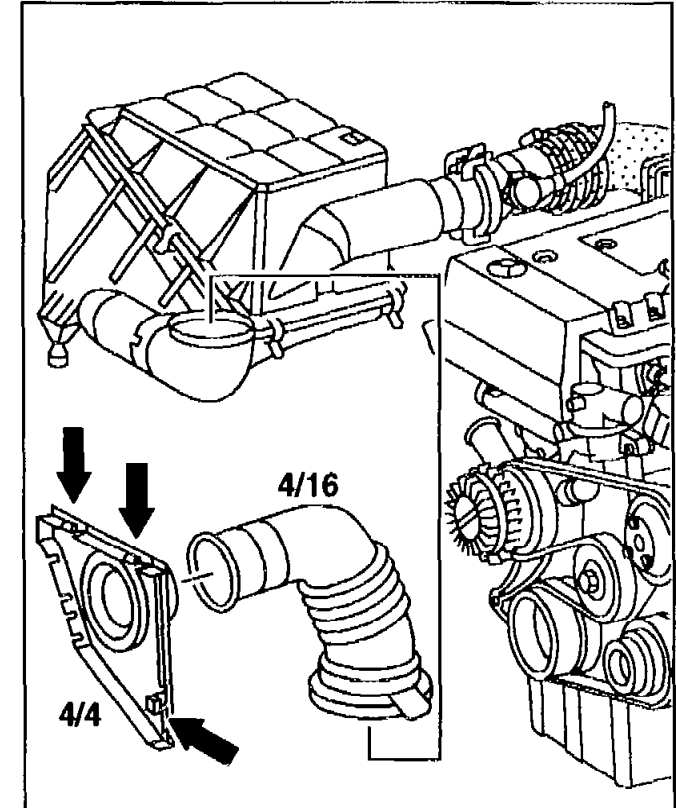
4/4 Intake air scoop
Arrow Clip

*Right-hand illustration shows
Model 202 engine 111*

4/4 Intake air scoop
4/16 Air intake pipe
Arrows Retaining lugs



P09.10-0207-02

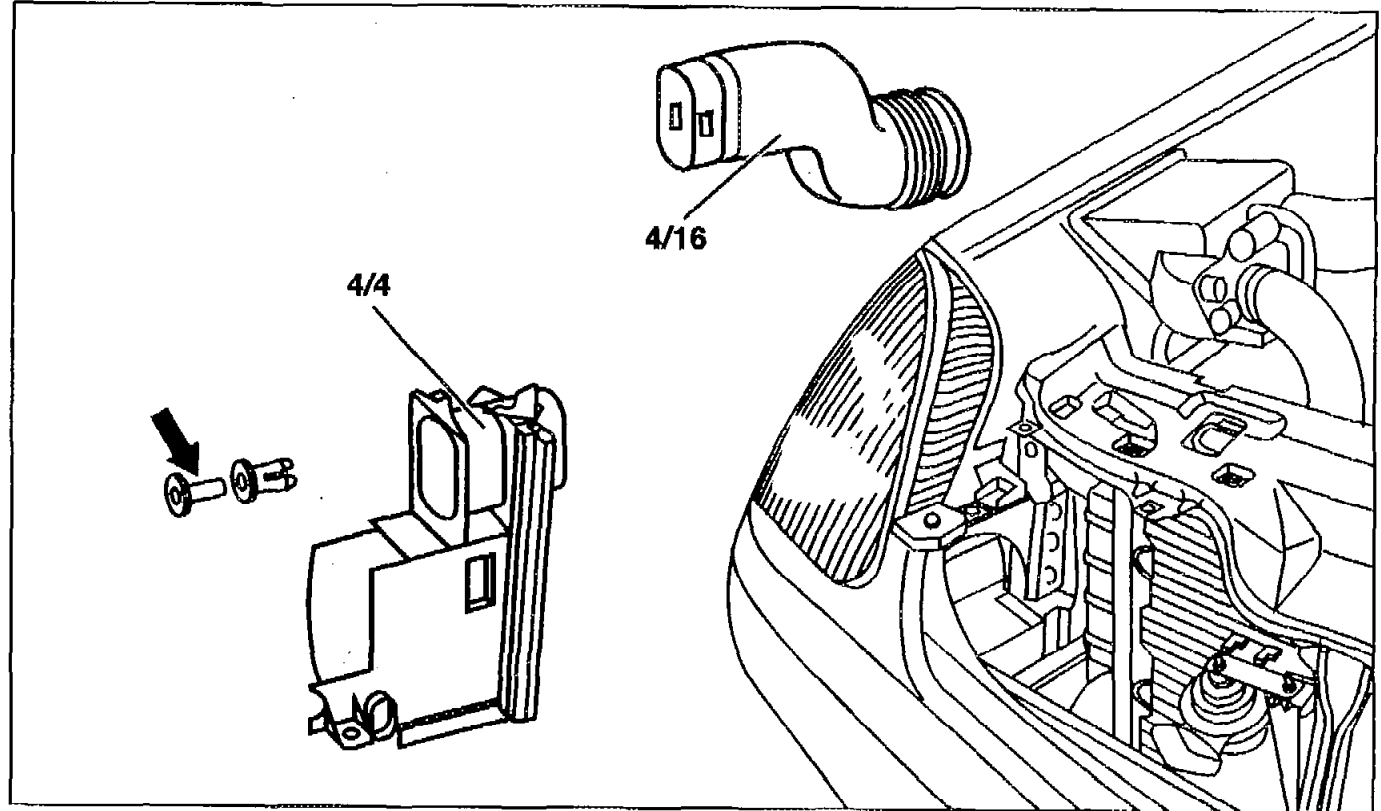


P09.10-0208-02

Model 170

4/4 Intake air scoop

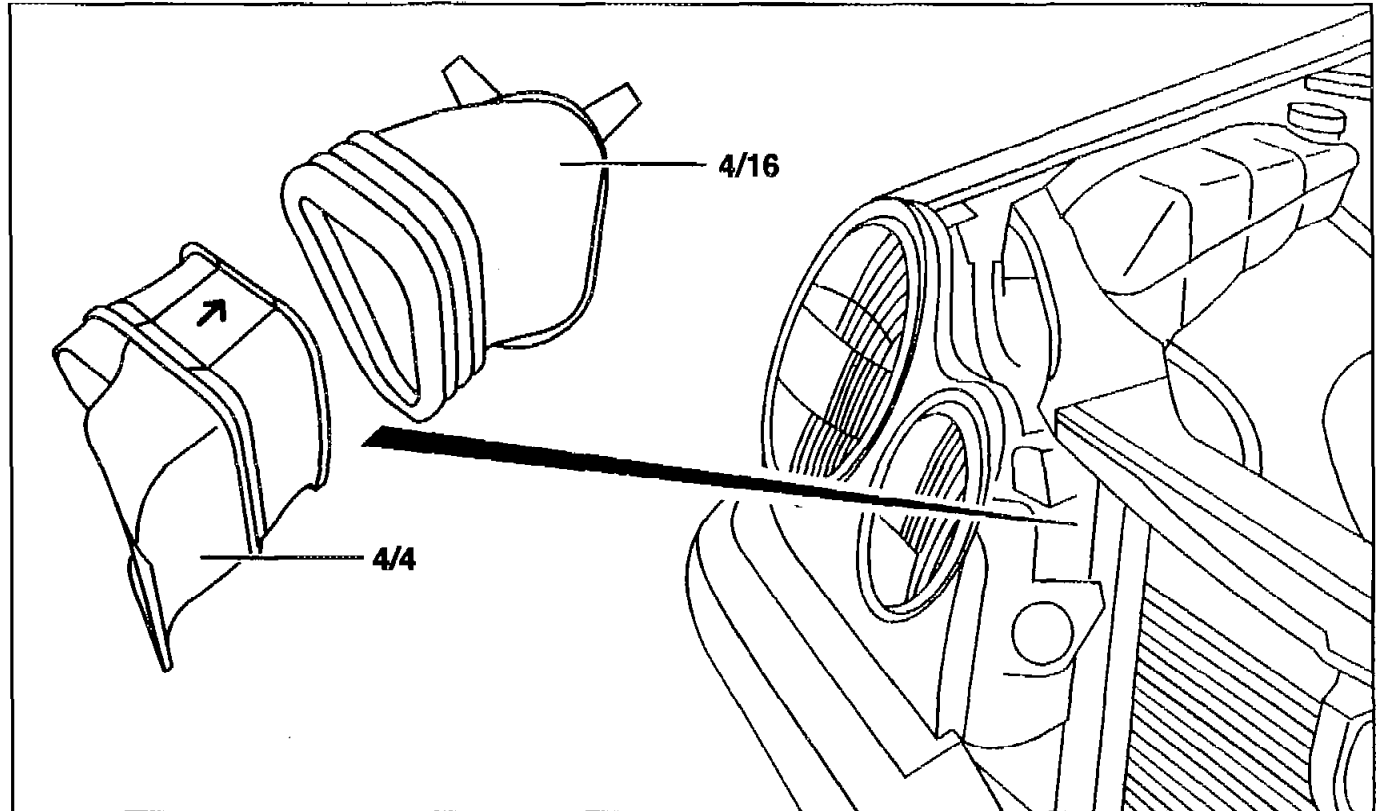
4/16 Air intake pipe





Model 210 with engine 111

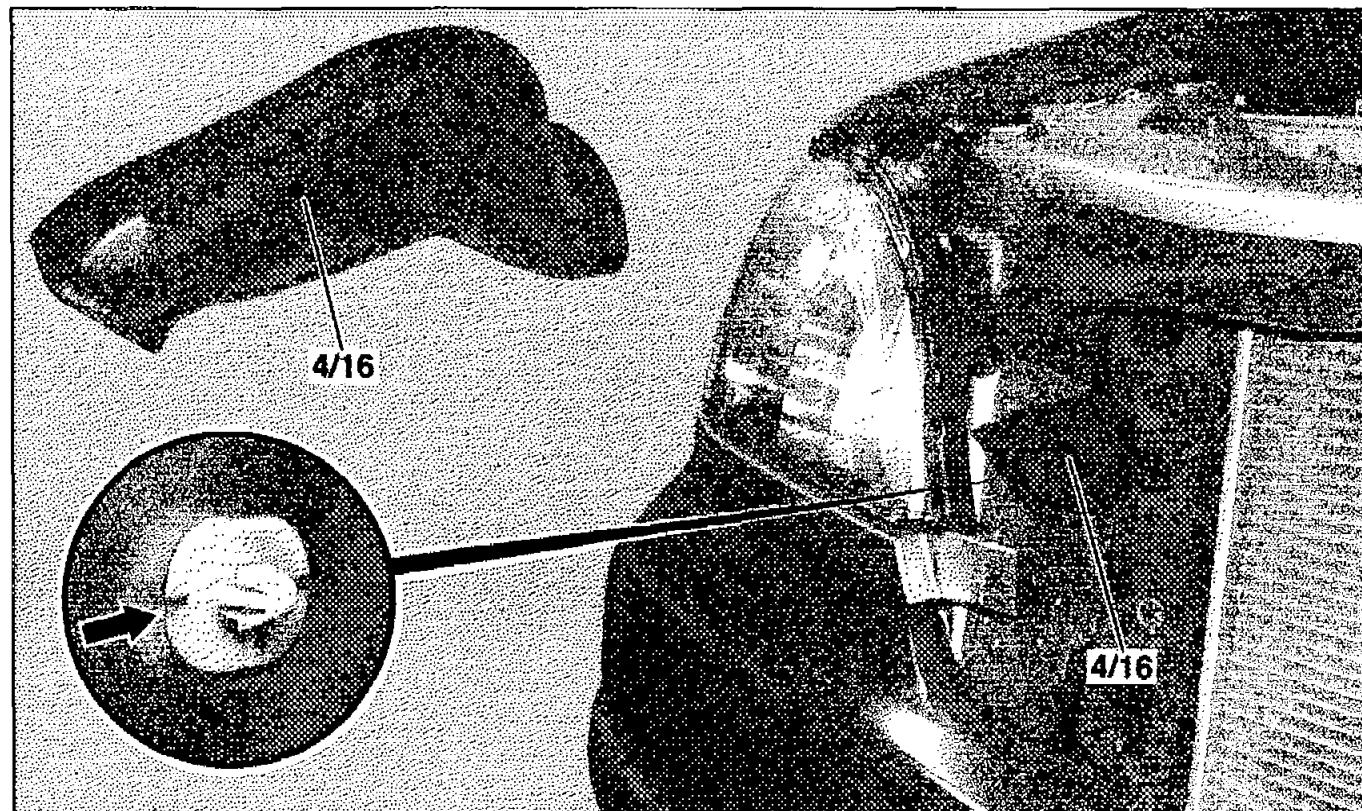
- 4/4 Intake air scoop
- 4/16 Air intake pipe



Model 163 with engine 111

4/16 Air intake scoop

Arrow Securing clip



P09.10-2002-05

Fig. item, etc.	Work instructions		
i	Remove air cleaner	Model 163 Press together securing clip (arrow)	AR09.10-P-1050G E2
i	Radiator grille	Model 170 Pull out locking pins (arrow) Model 202 Release retaining lugs (arrows)	



		Model 210 Press forward out of catch	
4/4	Intake air scoop	Model 124 Press clip (arrow) down	
4/16	Air intake pipe		