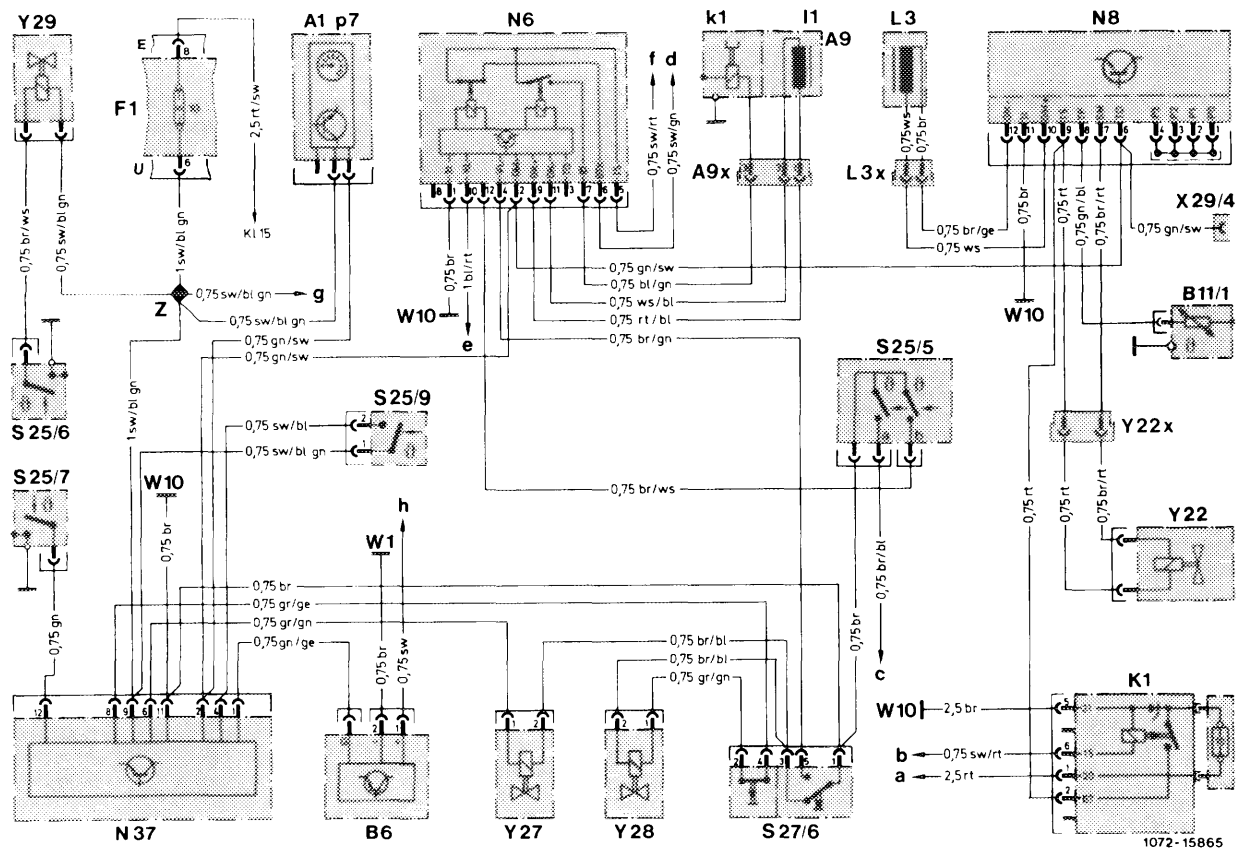


07.1-400 Electrical wiring diagrams



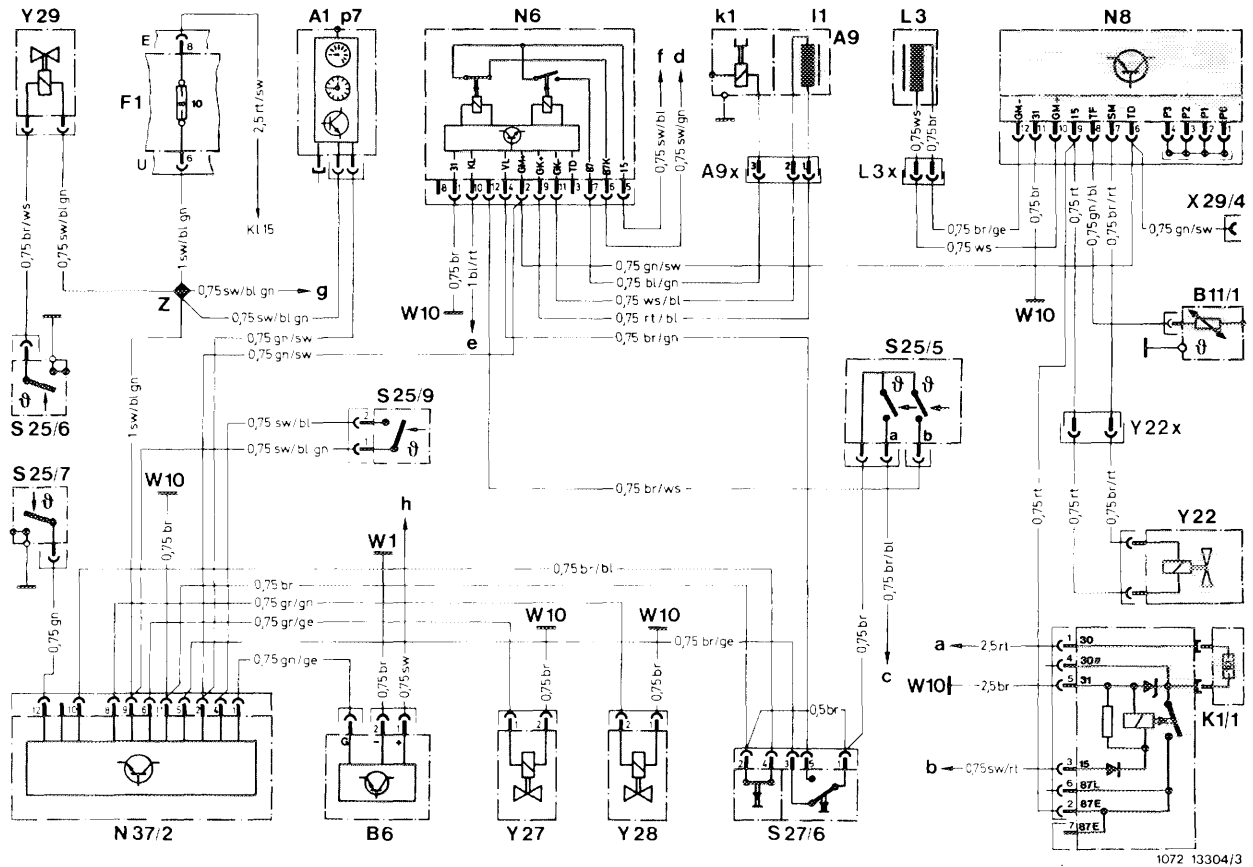
Engine 602 in model 201
model year 1986

Electrical wiring diagram exhaust gas recirculation

A1 p7	Electronic clock/tachometer	S25/9	97 °C Temperature switch (EGR)
A9	A/C compressor	S27/6	Microswitch compressor cut-out (EGR)
A9 k1	Electromagnetic coupling	X29/4	Test coupling TD
A9 i1	Speed sensor	Y22	Electromagnetic actuator (ELR)
A9x	Connector A/C compressor	Y22x	Connector (ELR electromagnetic actuator)
B6	Hall-effect speed sensor	Y27	Switchover valve exhaust gas recirculation
B11/1	Coolant temperature sensor (ELR)	Y28	Switchover valve vacuum control flap
F1	Fuse/relay box	Y29	Switchover valve vacuum transducer (automatic transmission)
E	Coupling	Z	Soldered connector sleeve
U	Coupling	a	Terminal block engine terminal 30/terminal 61 (battery)
K1	Overvoltage protection relay	b	Central electrics, coupling U jack 5
L3	Speed sensor starter ring gear	c	Relay fan, terminal 85, jack 5
L3x	Connector speed sensor starter ring gear	d	Connector 1-pole tail lamp cable harness
N6	Control unit compressor cutout	e	Pressure switch (S31) A/C compressor
N8	Control unit ELR	f	Relay fan, terminal 86, jack 4
N37	EGR control unit	g	Washing nozzle heater left
S25/5	Temperature switch 105/115 °C	h	Terminal block interior (X5/1)
S25/6	50 °C Temperature switch		
S25/7	25 °C Temperature switch (EGR)		

Note

Unidentified grounding points are connected to engine ground or battery ground.

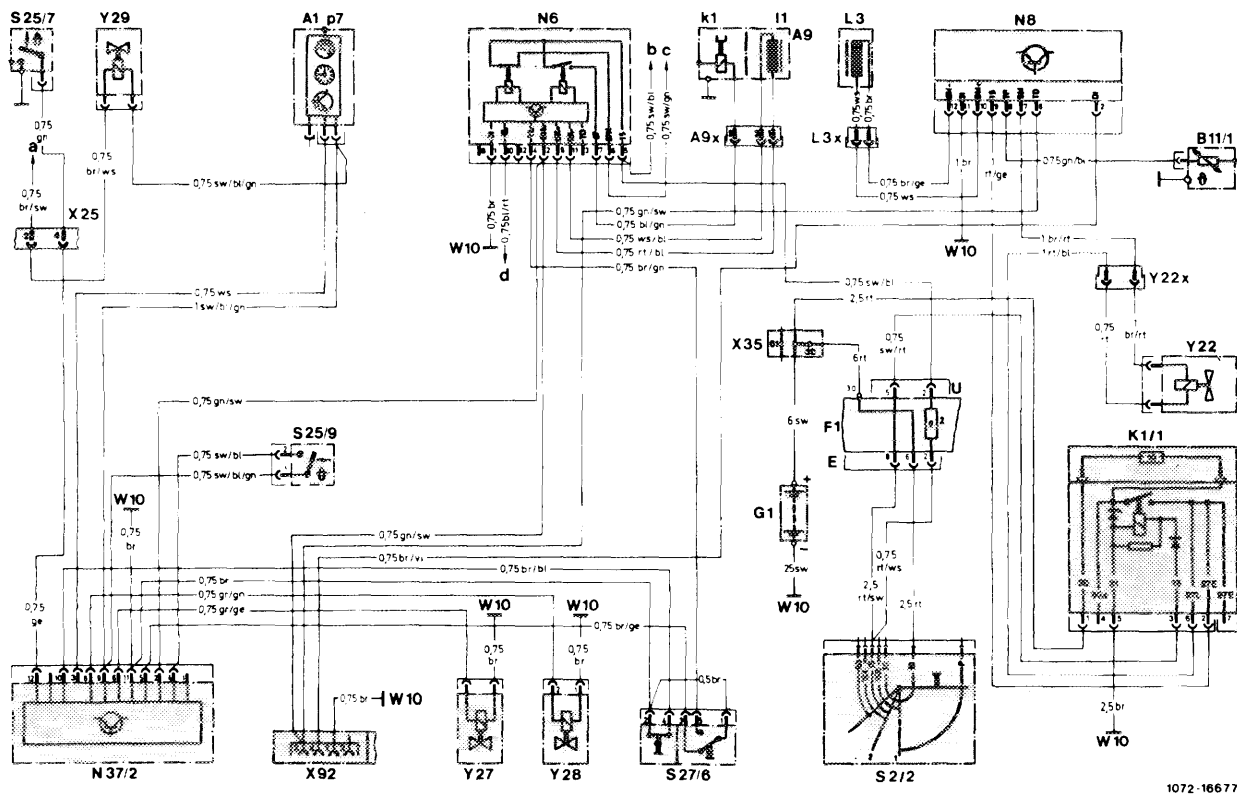


Engine 602 in model 201
 model years 1987 and 1988
 Electrical wiring diagram exhaust gas recirculation

A1 p7	Electronic clock/tachometer	S25/9	Temperature switch 97 °C (EGR)
A9	A/C compressor	S27/6	Microswitch compressor cut-out (EGR)
A9 k1	Electromagnetic coupling	X29/4	Test coupling TD
A9 I1	Speed sensor	Y22	Electromagnetic actuator ELR
A9x	Connector A/C compressor	Y22x	Connector (ELR electromagnetic actuator)
B6	Hall-effect speed sensor	Y27	Switchover valve exhaust gas recirculation
B11/1	Coolant temperature sensor (ELR)	Y28	Switchover valve vacuum control flap
F1	Fuse/relay box	Y29	Switchover valve vacuum transducer (automatic transmission)
E	Coupling	Z	Soldered connector sleeve
U	Coupling	a	Terminal block engine terminal 30/terminal 61 (battery)
K1/1	Overvoltage protection relay	b	Central electrics, coupling U jack 5
L3	Speed sensor starter ring gear	c	Relay fan, terminal 85, jack 5
L3x	Connector speed sensor starter ring gear	d	Connector 1-pole tail lamp cable harness
N6	Control unit A/C compressor cut-out	e	Pressure switch (S31) A/C compressor
N8	Control unit ELR	f	Relay fan, terminal 86, jack 4
N37/2	Control unit exhaust gas recirculation	g	Washing nozzle heater left
S25/5	Temperature switch 105/115 °C	h	Terminal block interior (X5/1)
S25/6	Temperature switch 50 °C		
S25/7	Temperature switch 25 °C (EGR)		

Note

Unidentified grounding points are connected to engine ground or battery ground.



1072-16677

Engine 602 in model 201
 model year 1989
 Electrical wiring diagram exhaust gas recirculation

A9	A/C compressor	W10	Ground, battery
A9 k1	Electromagnetic coupling	X25	Connector, preglow wiring harness
A9 I1	Speed sensor	X35	Terminal block, battery terminal 30/61
A9x	Connector A/C compressor	X92	Diagnostic test coupling
B11/1	Coolant temperature sensor (ELR)	Y22	Electromagnetic actuator ELR
F1	Fuse/relay box	Y22x	Connector (ELR electromagnetic actuator)
G1	Battery	Y27	Switchover valve exhaust gas recirculation
K1/1	Overvoltage protection relay 87E (7-pole)	Y28	Switchover valve vacuum control flap
L3	Speed sensor starter ring gear	Y29	Switchover valve vacuum transducer
L3x	Connector speed sensor starter ring gear	a	To temperature switch S25/6
N6	Control unit A/C compressor cut-out	b	To washer nozzle heating left R2/2
N8	Control unit ELR	c	To connector engine cable harness X26/5
N37/2	Control unit exhaust gas recirculation	d	To pressure switch A/C compressor S31/1
S2/2	Glow starter switch		
S25/7	Temperature switch 25 °C (EGR)		
S25/9	Temperature switch 97 °C (EGR)		
S27/6	Microswitch compressor cut-out (EGR)		

Note

Unidentified grounding points are connected to engine ground or battery ground.